



XVHWC

USER MANUAL

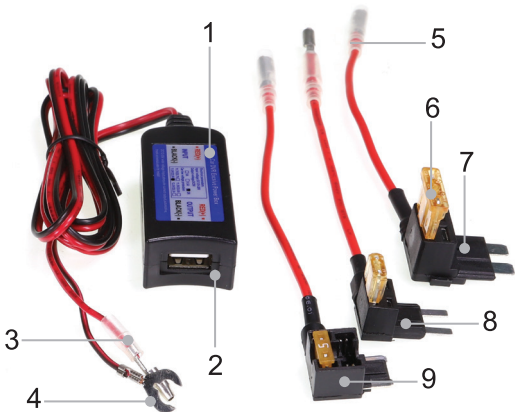


For more information
on the Xview range go
to our website

xviewdrive.com.au



1. PRODUCT DESCRIPTION



1) Vehicle Exclusive
Power Box

2) USB Connection Port

3) Male Bullet Connector

4) Ground Wire

5) Female Bullet Connector

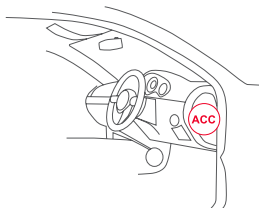
6) Fuse (3 included)

7) Blade FuseTAP Connector

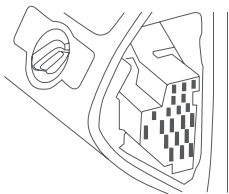
8) Mini Blade Fuse TAP Connector

9) Micro Blade Fuse TAP Connector

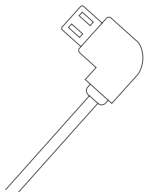
2. INSTALLATION



1. Find fuse box in car (fuse the position differs among different vehicle brands). Consult vehicle user manual for placement.

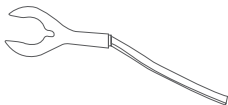


2. Open fuse box cover plate, measure the placement for wiring from fusebox to powered product.



3. Plug in USB power device

2. INSTALLATION CONT...

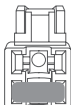


4. Locate a ground point near the fuse box. There is usually either an obvious labeled ground point or a nut / bolt that connects directly to chassis.

Mini Blade



Micro Blade

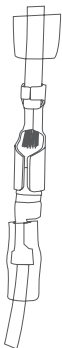


Blade



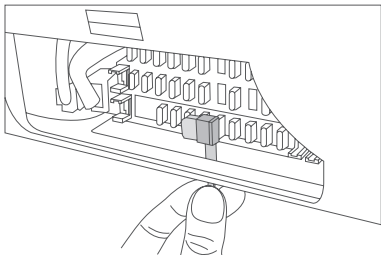
5. Decide whether you want your device wired to a switched or unswitched fuse. Switched circuits only have power when the vehicle is ON. Unswitched circuits always have power. You can verify if it's switched or unswitched using a simple circuit tester. NOTE: Make sure your vehicle is off and the key is not in the ignition. Choose your desired TAP fuse. Once you select the desired TAP fuse for your vehicle, attach to the power cable using the bullet connectors, then cover with plastic sleeve.

2. INSTALLATION CONT...



NOTE: This hardwire kit uses easy to put together bullet connectors. Attach each end of bullet connector until you feel a click.

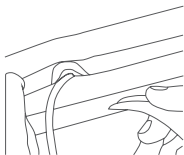
6. Pull the fuse, place fuse into the TAP fuse, then re-insert into the available fuse slot.



2. INSTALLATION CONT...

Information below for Dash Cam installation

Vehicle Headliner

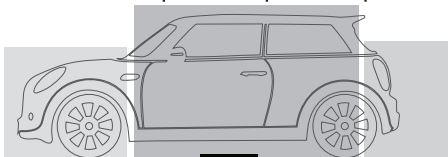


(A) Pillar



7. Starting at the USB powered product, tuck power cable into the headliner. Once you get to the (A) pillar, there may be a sufficient gap to place power cable or it may be necessary to remove. The A pillar is the plastic piece that runs down the side separating the windshield and the door. Route the power cable along the side and behind the rest of the interior panels down towards the fuse box.

A pillar B pillar C pillar



3. SPECIFICATIONS

- The hard wire kit can have uninterrupted power for 24 hours if connected to vehicle battery or fuse box.
- It can stay powered on when your vehicle is turned off.
- With function of auto detect battery voltage and low voltage protecting, it can cut power supply when voltage is too low, make sure the car can start normally.
- The vehicle hard wire kit is used as transforming 12V or 24V to 5V, with built-in precise switching power supply module, output voltage is more stable.
- Short-circuit protection: over-current and over-temperature protection, reverse connection protection, auto cut power output when it's lower than 12V (for 12V connection) or 24V (for 24V connection).
- Conversion efficiency: Max 96%
- Static power consumption: about 15-18mA
- Operating temperature: Industrial level (-40°C ~ +85°C)

Electrical Parameters

- Input voltage: DC12V - 30V
- Output voltage: 5V / 1.5A
- Car low voltage protection: 12V (for 12V connection)
- Car low voltage protection: 24V (for 24V connection)

4. USER SUPPORT

If you need assistance setting up or have an issue regarding the use of your Xview product contact Xview Customer Support.

Australian Agent

TEL: 03 – 8587 8898 FAX: 03 – 8587 8866

Mon-Fri 9am – 5pm AEST

Please retain this user guide for future reference.

For more information, manuals, software or other products in the Xview range please go to our website.

Xviewdrive.com.au

This manual and product is considered correct at time of printing but is subject to change. For latest manuals and updates refer to the website.