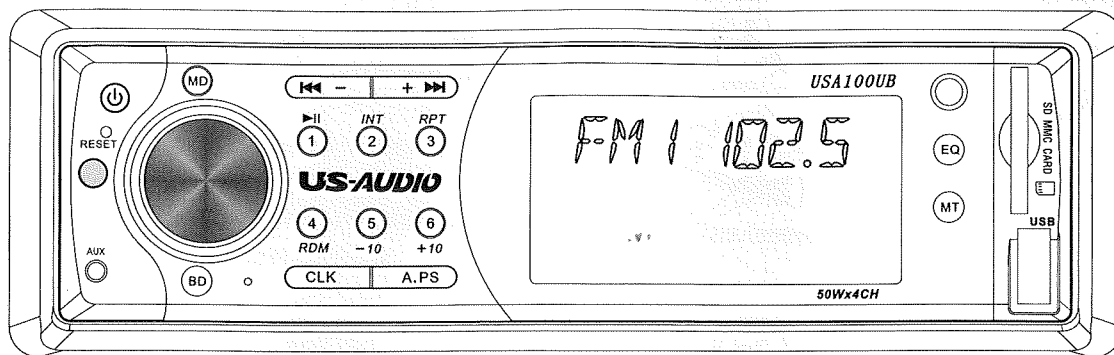


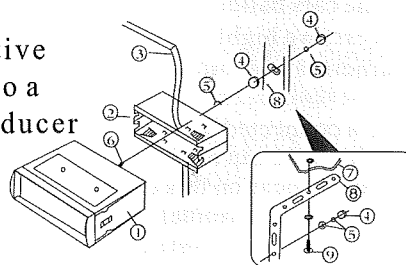
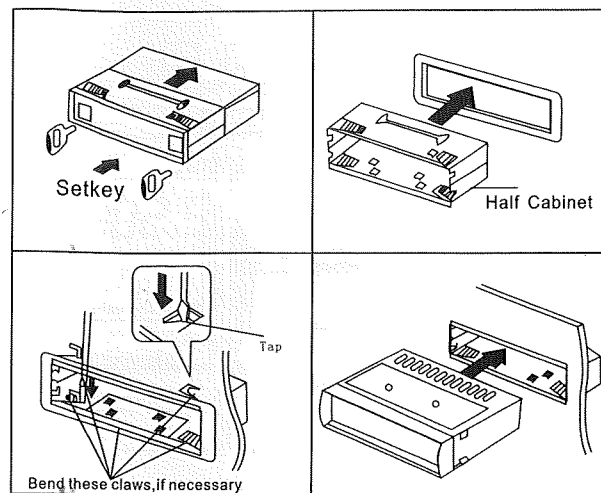
USERS' MANUAL



Please read this users' manual carefully!

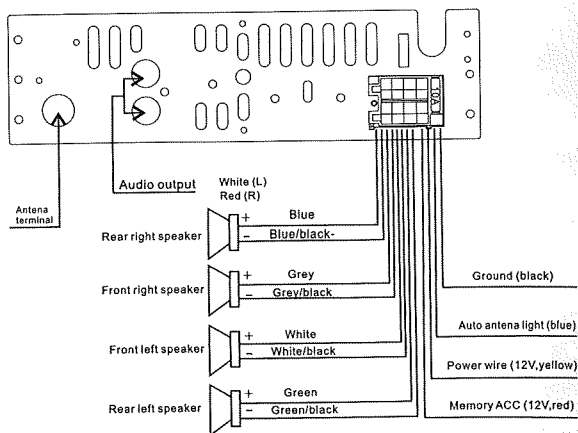
Installation Precautions:

- 1.To avoid damage, this unit should be installed by a professional installer were possible.
- 2.Please refer to the users' manual for electrical wiring instructions, incorrect wiring will cause damage to the unit that is not covered by warranty.
- 3.Only connect the wiring connector to the unit after all connections of the unit are made and are insulated.
- 4.You must Insulate all exposed wires to avoid short circuits.
- 5.All loose wires should be raped into a neat loom before the unit is inserted into the dash.
6. The unit is designed for 12v-15v-negative ground systems only, When installing into a 24Volt system (Large Truck) a voltage reducer must be used.



- 1.main unit
- 2.half cabinet
- 3.dashboard
- 4.hex nut
- 5.spring washer
- 6.M5x15 hex bolt
- 7.car body
- 8.rear mounting backset
- 9.Tapping screw 5x15

Wiring Connections:



1. After confirming your power, Accessory and Ground wires, it is advised to disconnect the cars battery to avoid shorts during the installation process. We highly recommend the use of Prefabricated wiring harnesses to avoid incorrect wiring and to save time.

2. Please note that the yellow wire is connected to a non interrupted power source if a suitable wire can not be found behind the head unit installation location this can be sourced directly from the battery's positive terminal

3. For best performance a quality 4ohm speaker system is required. poor speaker quality will result in poor sound quality.

SPECIFICATIONS:

FM tuner:

Frequency range:.....87.5-108MHz
 Medium frequency:.....10.7MHz $\pm 0.3\%$
 Noise sensitivity:.....50dB
 Radio sensitivity:10dB

AM tuner:

Frequency range:.....522-1710kHz
 Medium frequency:.....455kHz $\pm 5\%$
 Noise sensitivity:.....50dB
 Radio sensitivity:40dB

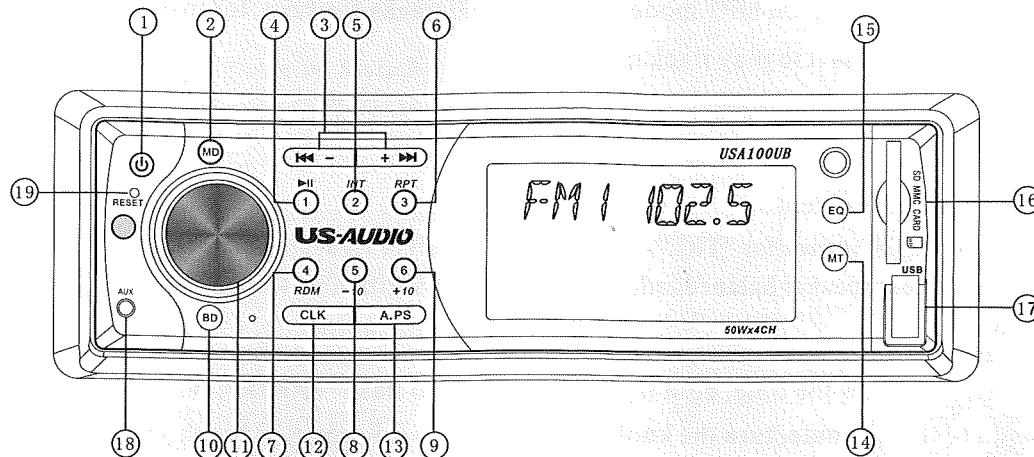
USB/SD:

Frequency response.....20Hz-20KHz
 Signal/Noise ratio..... > 50db
 Harmony distortion T.H.D..... < 3%(1KHz)

Others:

RMS Power Output.....4x50W
 Supply voltage.....12-15VDC minus earth
 Speaker impedance.....4-8 ohm /ch
 Dimensions.....177x115x50mm

Front Panel Controls and Functions



1. POW: Power on/off.
2. MD: Mode swift.
3. “ ⏮, ⏭ ” button: On radio mode, Press it for AUTO station search; hold it for manual station search. On MP3 mode, hold it for fast forward/ fast backward; press it for the last or next song
4. 1/⏸ button: Radio(AM / FM) memory / on play mode, press it for pause
5. 2 / INT button: Radio(AM / FM) memory / on play mode, press it for browse
6. 3 / RPT button: Radio(AM / FM) memory / on play mode, press it for repeat play
7. 4 / RDM button: Radio(AM / FM) memory / on play mode, press it for random play
8. 5 button: Radio memory button / on MP3 mode, press it for 10 tracks backward, for instance, if track number 25 is played, press it to play track number 15.

9. 6/+10 :Radio Memory button/On MP3 mode, press it to go 10 tracks forward, for instance, if track number 25 is played, press it to play track number 35.

10.BD: Band Swift.

11.Multi function button

★ Turn it for volume adjustment.

★ Press it once for “BAS”, twice for “TRE”, a third time for left or right speaker balance “BAL”, a fourth time for front and rear speaker balance fader “FAD”. Press it a fifth time for LOUD on/off. Press it a sixth time EQ choice

12. CLK button: clock adjustment.

★ press CLK once to show the time, hold it for two seconds to flash “HOUR”, turn “VOL” button to adjust it.

Press it again to flash minute, turn the knob to adjust, press CLK again to finish setting

13. A.PS: press it for scan preset stations, hold it for automatic station storage.

14.MT: mute on/off.

15. EQ button: Press it for “POP” → “ROCK” → “CLASS” → “FLAT” → “EQ off” equalization

16.SD card port: insert the card, contents will play automatically.

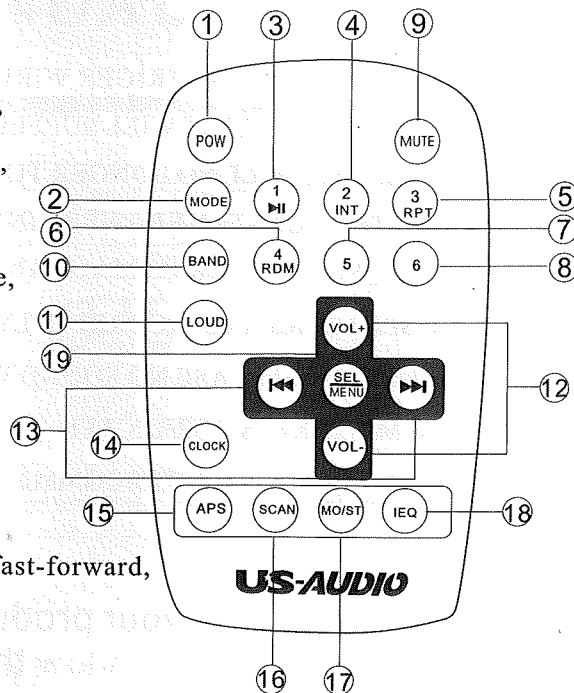
17.USB port: insert the USB, contents will play automatically.

18.AUX port: To listen to an external music input such as iPod etc

19.RESET button: press reset button if the function of the head unit becomes unusual or unit does not function correctly

Remote Configuration:

1. POW: Power On/Off.
2. MODE: Mode Interchange (Function Switch).
3. 1/⏮: On Radio mode, press for station preset, on Play mode, press it for PAUSE
4. 2/INT: On Radio mode, press for station preset, on Play mode, press it for Track Display
5. 3/RPT: On Radio mode, press for station preset, on Play mode, press it for REPEAT
6. 4/RDM: On Radio mode, press for station preset, on Play mode, press it for RANDOM Play
7. DOWN: On Radio mode, hold it for station preset, on MP3 mode, press it for 10 tracks backward, for instance, if track number 25 is played, press it to play track number 15.
8. UP: On Radio mode, hold it for station preset, on MP3 mode, press it for 10 tracks forward, for instance, if track number 25 is played, press it to play track number 35.
9. MUTE: Mute On/Off.
10. BAND: Band selection.
11. LOUD: BAS On/Off.
12. VOL+, VOL-: Volume adjustment
13. ⏮, ⏭: On Radio mode for station search, on Play mode for fast-forward, fast-backward or track forward or track backward.
14. CLOCK: Time Display.
15. A.PS: On Radio mode for Auto station preset.
16. SCAN: Auto station seek.
17. MO/ST: Mono/Stereo Interchange.
18. IEQ: press it for "POP" → "ROCK" → "CLASS" → "FLAT" → "EQ off"
19. SEL/MENU: please refer to Point 11, Page 4



WARNINGS:

- ★ SHOULD THE ANTENNA TRIGGER WIRE (BLUE) BE GROUNDED OR WRONGLY CONNECTED, THE UNIT WILL SUFFER DAMAGE AND THE RESULT WILL BE THAT THE UNIT WILL NO LONGER TURN ON
 - ★ SHOULD THE CONSTANT POWER LINE (YELLOW) BE GROUNDED OR WRONGLY CONNECTED, THE UNIT WILL SUFFER DAMAGE AND FAIL TO TURN ON OR ILLUMINATE.
 - ★ IF THE SPEAKERS ARE INCORRECTLY WIRED, DAMAGE CAN BE CAUSED TO THE UNITS AMPLIFIER IC. THIS CASE NO SOUND WILL COME FROM THE SPEAKERS EVEN AFTER THE WIRING MISTAKE IS CORRECTED. THE UNIT WOULD NEED TO BE REPAIRED FIRST.
- TO AVOID THE ABOVE WE RECOMMEND YOU HAVE THE UNIT INSTALLED BY A PROFESSIONAL.

If you wish to register your product with us please go to our web site at www.us-audio.com and follow the warranty registration prompts from the home page. Thank you.