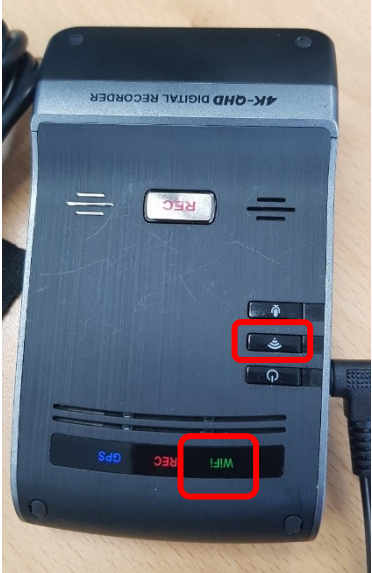



How to Connect with Thinkware Cloud App via Wi-Fi or Hotspot

March. 2020

W-Fi and Hotspot

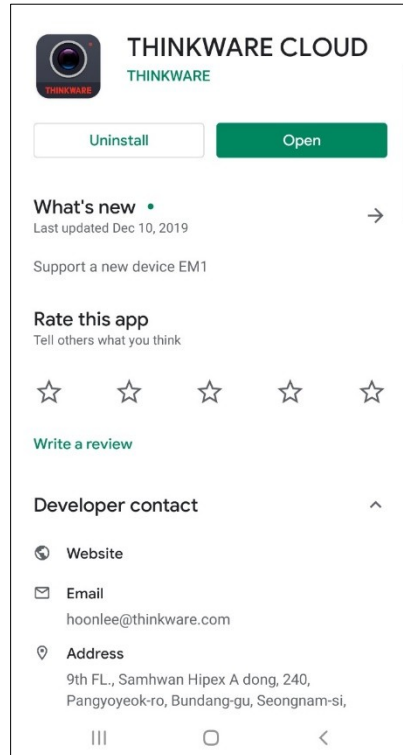
W-Fi (Green LED)	Hotspot (Blue LED)
 A photograph of the back of a black 4K-QHD Digital Recorder. The device has a 'REC' indicator at the top. Below it are several buttons, including a Wi-Fi button which is circled in red. At the bottom, there is a status bar with 'GPS', 'REC', and 'WIFI' indicators. The 'WIFI' indicator is lit green and is also circled in red.	 A photograph of the back of a black 4K-QHD Digital Recorder. The device has a 'REC' indicator at the top. Below it are several buttons, including a Hotspot button which is circled in red. At the bottom, there is a status bar with 'GPS', 'REC', and 'WIFI' indicators. The 'WIFI' indicator is lit blue and is also circled in red.
<p>W-Fi button : connecting the product to a smartphone via W-Fi network. Press one more time : can change the W-Fi mode or Hotspot mode</p>	

Android Connections

How to connect with App via W-Fi and Hotspot (Android)

1. W-Fi Connection

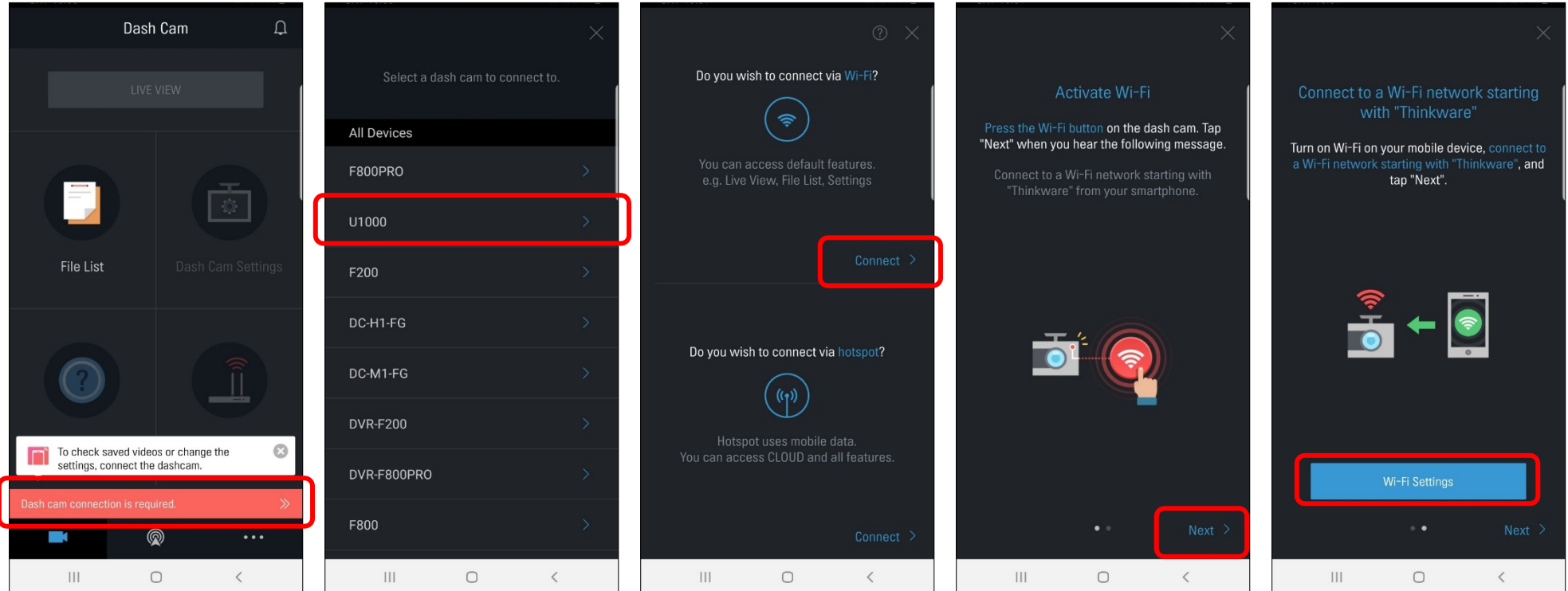
- Download and Install the Thinkware Cloud App in your Google Play Store



How to connect with App via a W-Fi and Hotspot (Android)

1. W-Fi Connection

- APP → Select a Dash Cam → W-Fi Connect → Next → W-Fi Settings

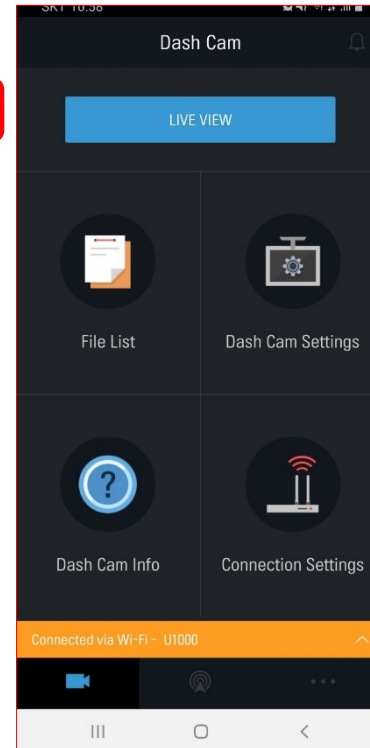
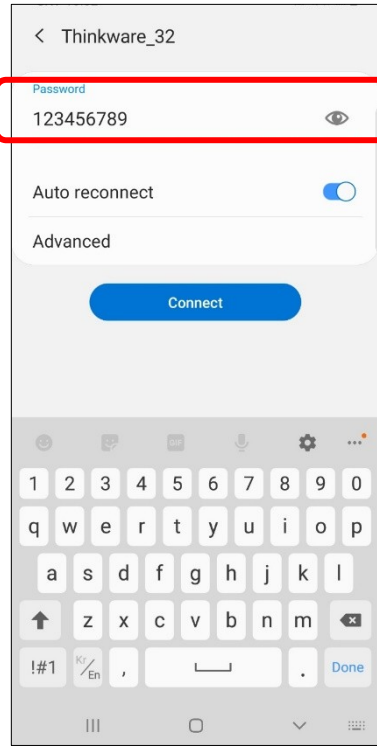
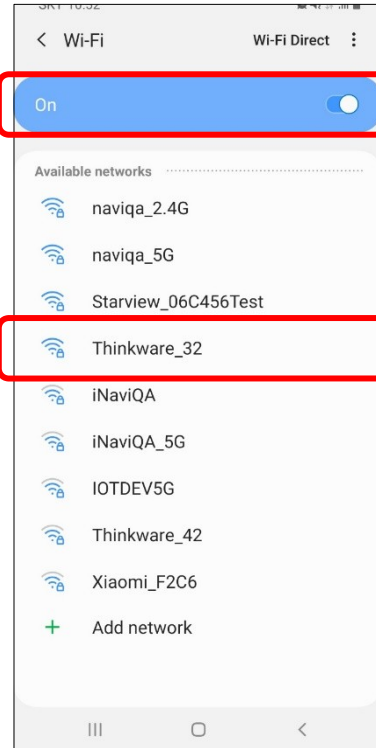


(For example :
U1000)

How to connect with App via a W-Fi and Hotspot (Android)

1. W-Fi Connection

- Mobile Setting → W-Fi ON → Select to “Thinkware_xx” → Password “123456789” → Return to the App

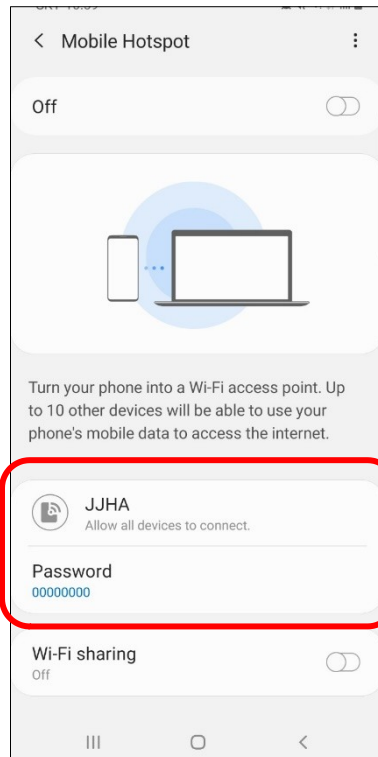


You will hear that “Connected to a Smartphone”
The app screen is activated.

How to connect with App via Wi-Fi and Hotspot (Android)

2. Hotspot Connection

- Remember your mobile hotspot SSID and password
(Settings → Connectivity → Mobile Hotspot & Tethering → Mobile Hotspot)



For example)

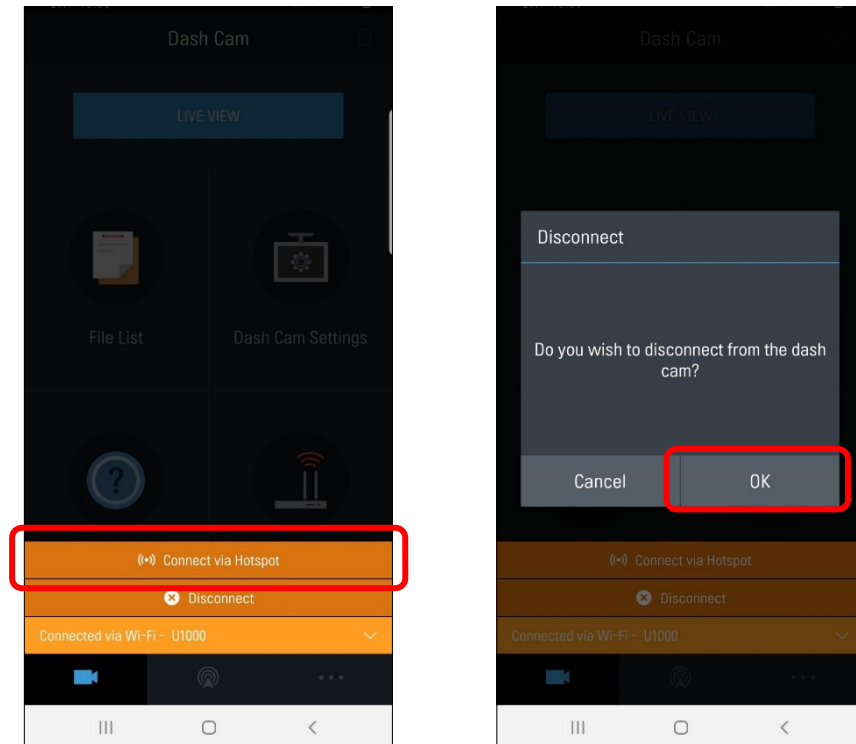
SSID : JJHA

Password : 00000000

How to connect with App via a W-Fi and Hotspot (Android)

2. Hotspot Connection

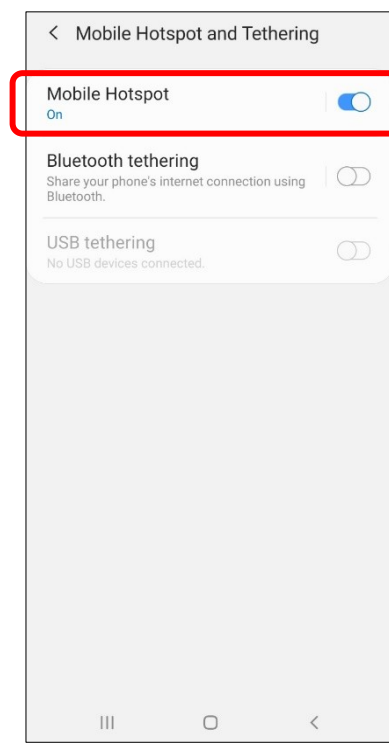
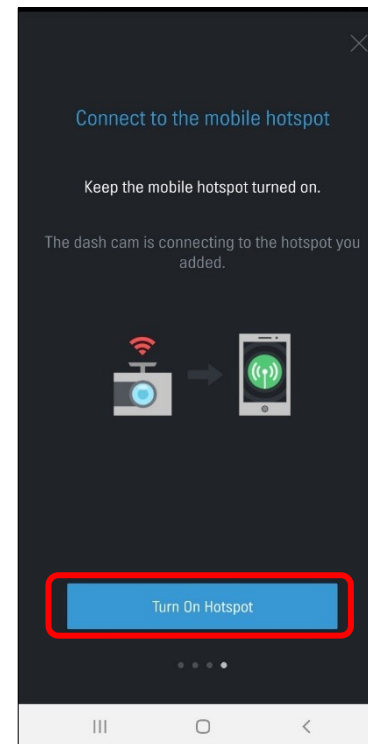
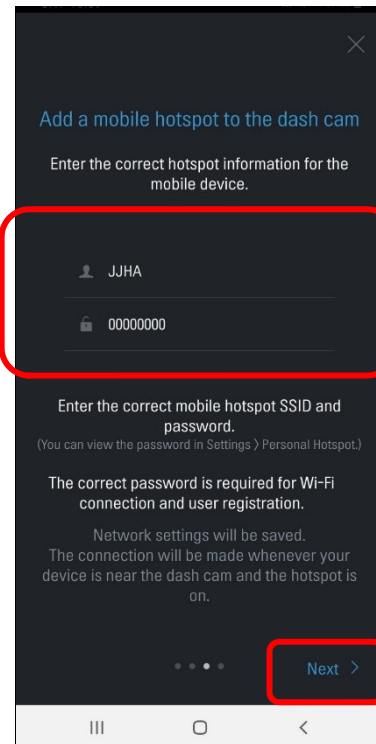
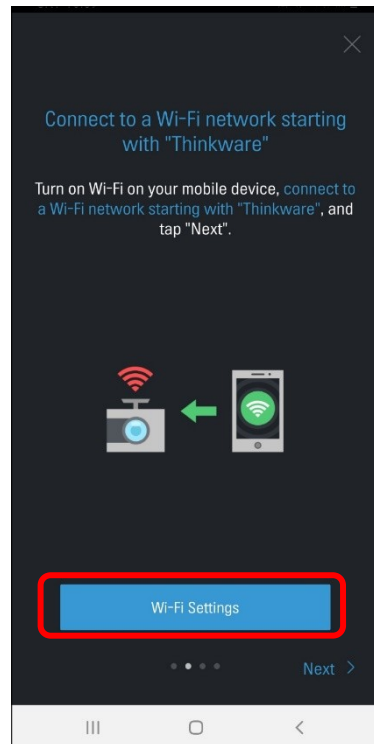
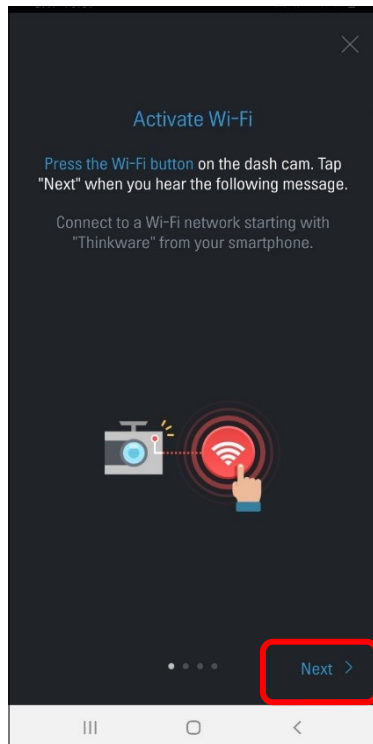
- With your W-Fi connected, Select “Connect via Hotspot” in your app



How to connect with App via Wi-Fi and Hotspot (Android)

2. Hotspot Connection

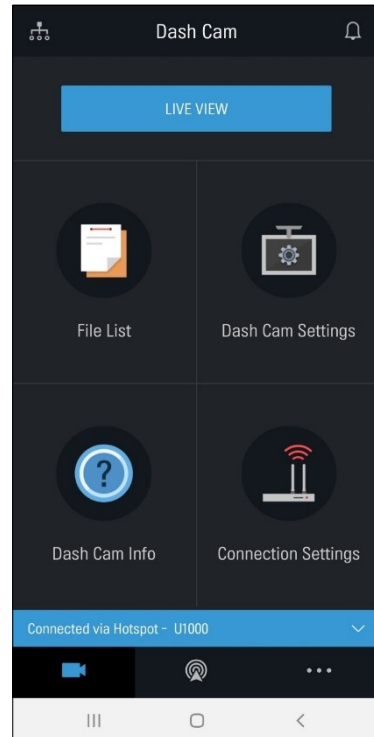
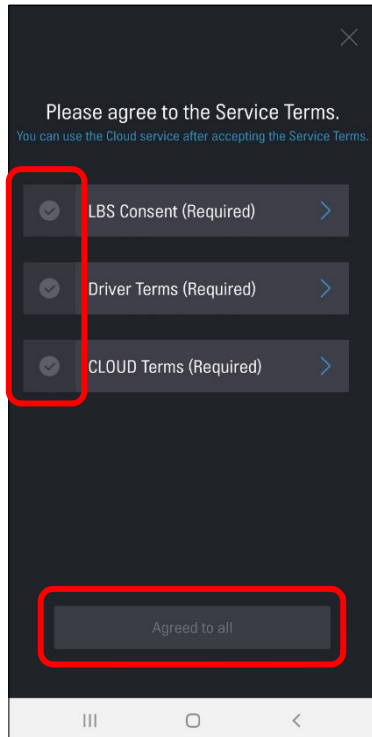
- Enter SSID and Password → Turn On Hotspot



How to connect with App via a W-Fi and Hotspot (Android)

2. Hotspot Connection

- Return to the app → Agree 3 service terms



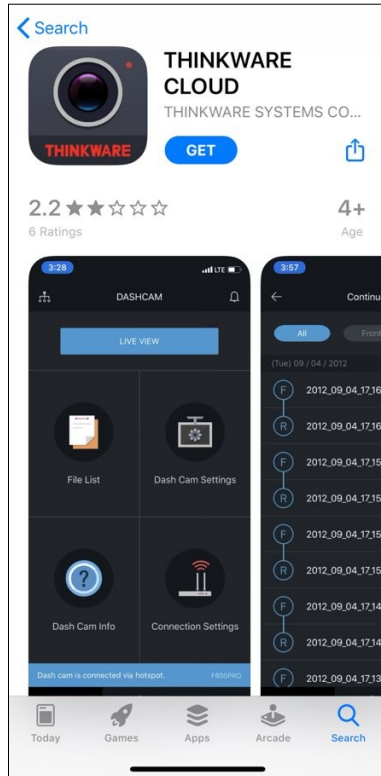
You will hear that “ Connected to the Internet ”
All of the app screens are activated.

i OS Connecti ons

How to connect with App via W-Fi and Hotspot (iOS)

1. W-Fi Connection

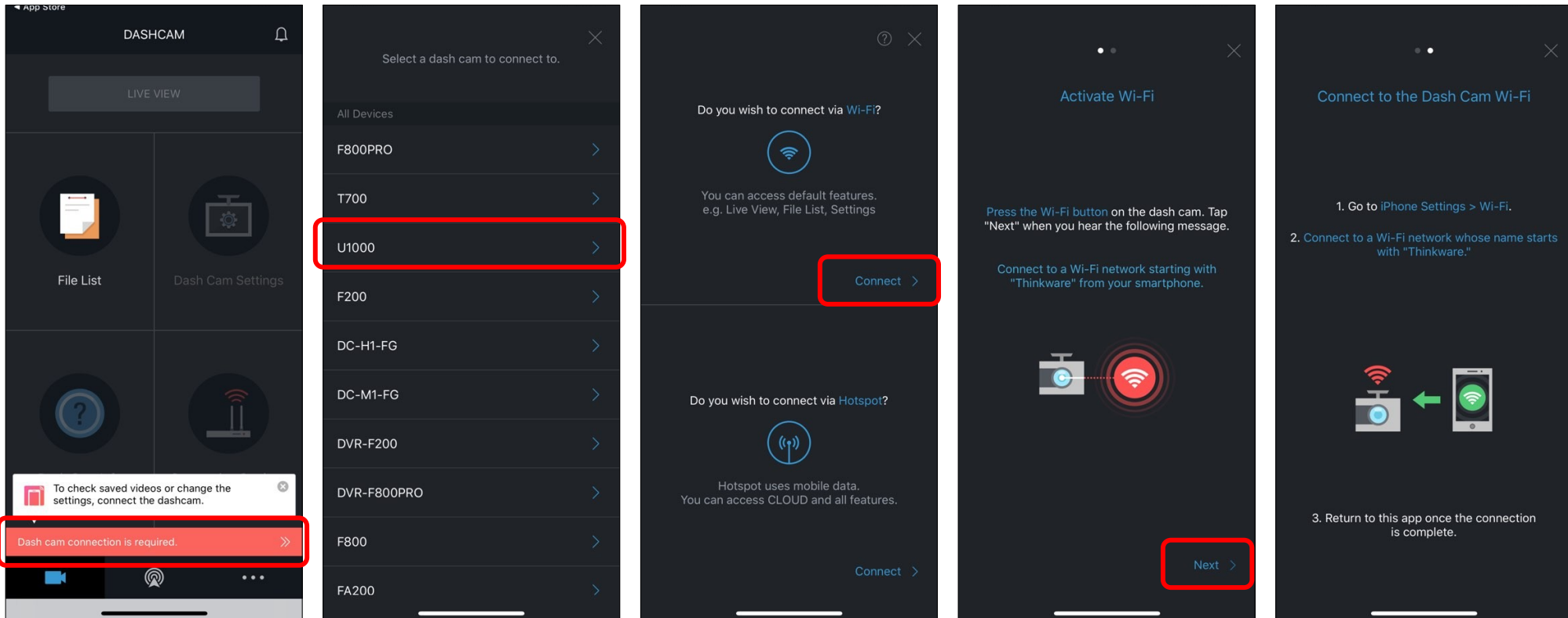
- Download and Install the Thinkware Cloud App in your App Store



How to connect with App via a Wi-Fi and Hotspot (iOS)

1. Wi-Fi Connection

- APP → Select a Dash Cam → Wi-Fi Connect → Next

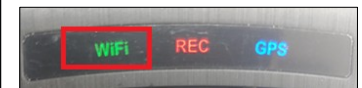
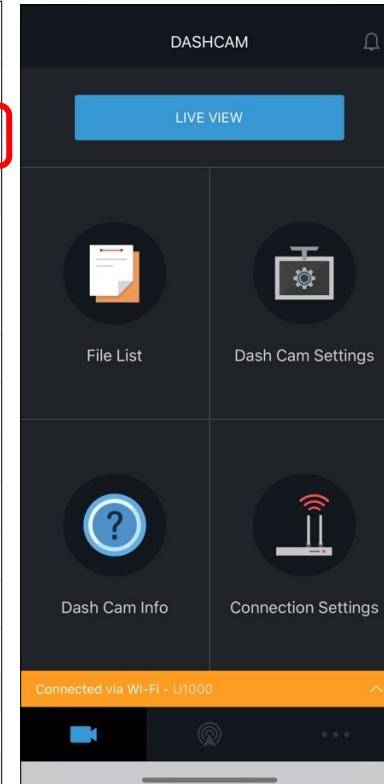
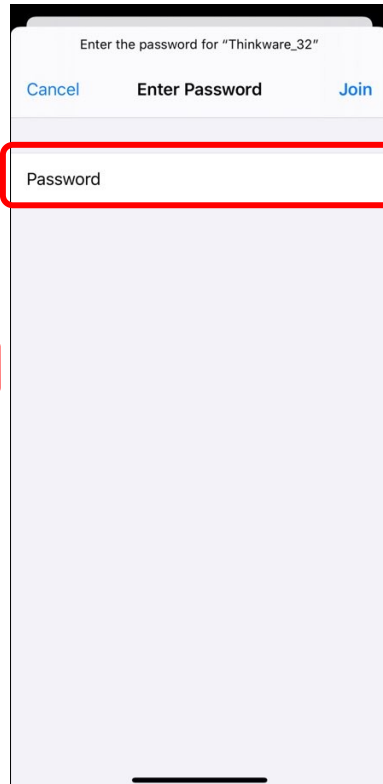
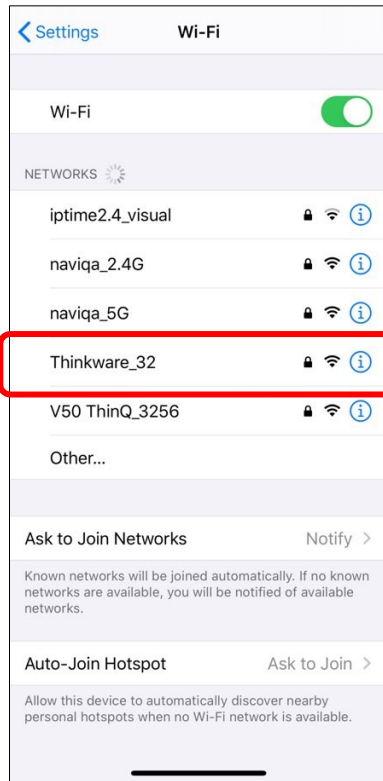


(For example :
U1000)

How to connect with App via Wi-Fi and Hotspot (iOS)

1. Wi-Fi Connection

- Settings → Wi-Fi ON → Select to “Thinkware_xx” → Password “123456789” → Return to the App

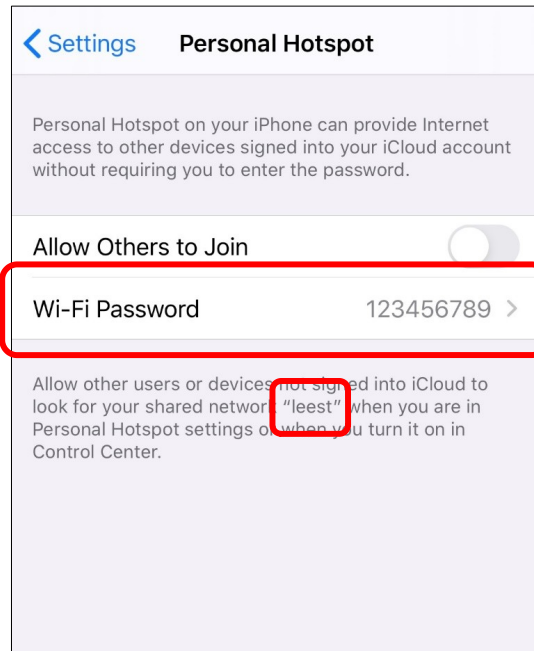


You will hear that
“Connected to a Smart-
phone”
The app screen is activ-
ated.

How to connect with App via W-Fi and Hotspot (iOS)

2. Hotspot Connection

- Please remember your mobile hotspot SSID and password
(Settings→Connectivity→Mobile Hotspot & Tethering→Mobile Hotspot)



For example)

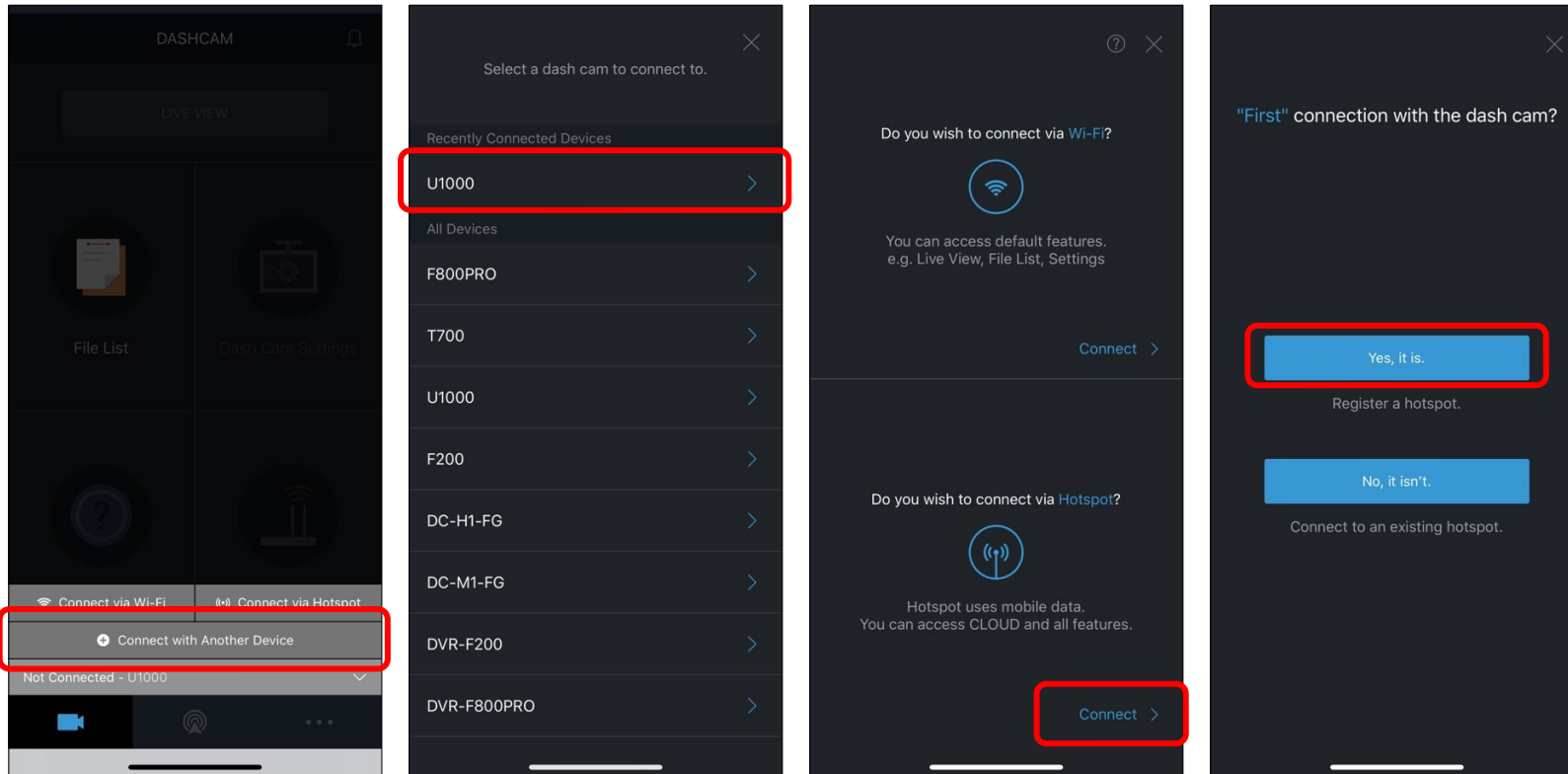
SSID : leest

Password : 123456789

How to connect with App via a W-Fi and Hotspot (iOS)

2. Hotspot Connection

- With your W-Fi connected, Select "Connect with Another Device"



How to connect with App via Wi-Fi and Hotspot (iOS)

2. Hotspot Connection

- Enter SSID and Password → Turn On Hotspot → **Stay on the screen until the connection is complete**

(Wait until the product is connected to your smartphone. You will hear the product say, “Connected to the Internet.” when the product is connected to your smartphone.)

The image displays a sequence of five screenshots from an iOS app, illustrating the process of connecting a dash cam to a smartphone via a personal hotspot. Red boxes highlight key elements: the 'Next >' button, the 'Input Complete' button, the hotspot name 'leest' and password '123456789', and the 'Allow Others to Join' toggle in the iPhone settings.

Screenshot 1: Activate Wi-Fi
 Press the Wi-Fi button on the dash cam. Tap "Next" when you hear the following message.
 Connect to a Wi-Fi network starting with "Thinkware" from your smartphone.
 Next >

Screenshot 2: Connect to the Dash Cam Wi-Fi
 1. Go to iPhone Settings > Wi-Fi.
 2. Connect to a Wi-Fi network whose name starts with "Thinkware."
 3. Return to this app once the connection is complete.

Screenshot 3: Add Hotspot to Dash Cam
 Enter the correct hotspot information of your smartphone.
 leest
 123456789
 Input Complete

Screenshot 4: Connect to Mobile Hotspot
 1. Go to iPhone Settings > Personal Hotspot.
 2. Turn on the personal hotspot and wait a moment. The dash cam is connecting to the hotspot you added.
 3. Return to this app once the connection is complete.

Screenshot 5: iPhone Personal Hotspot Settings
 10:34
 Settings Personal Hotspot
 Allow Others to Join
 Wi-Fi Password 123456789

How to connect with App via W-Fi and Hotspot (iOS)

2. Hotspot Connection

- Return to the app → Agree 3 service terms → All of the app screens are activated.

