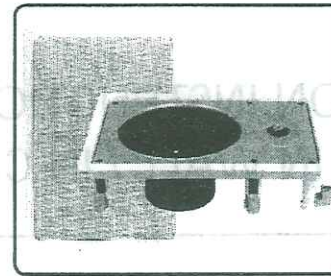
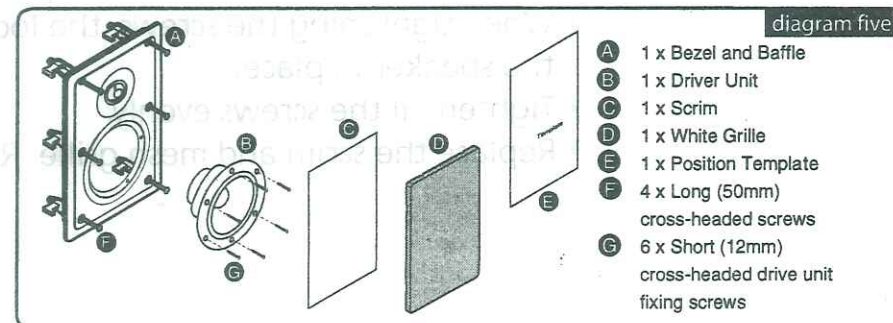
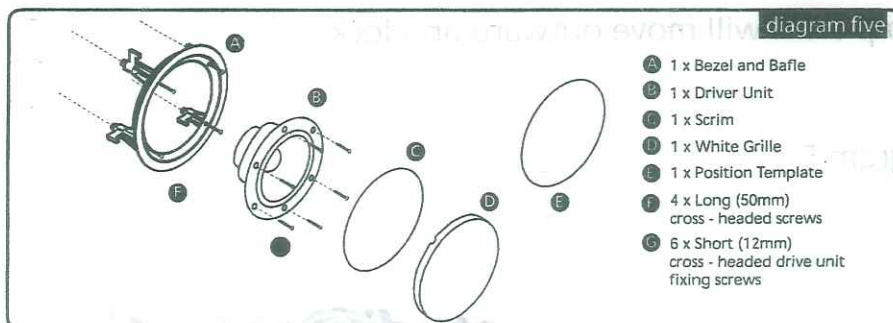
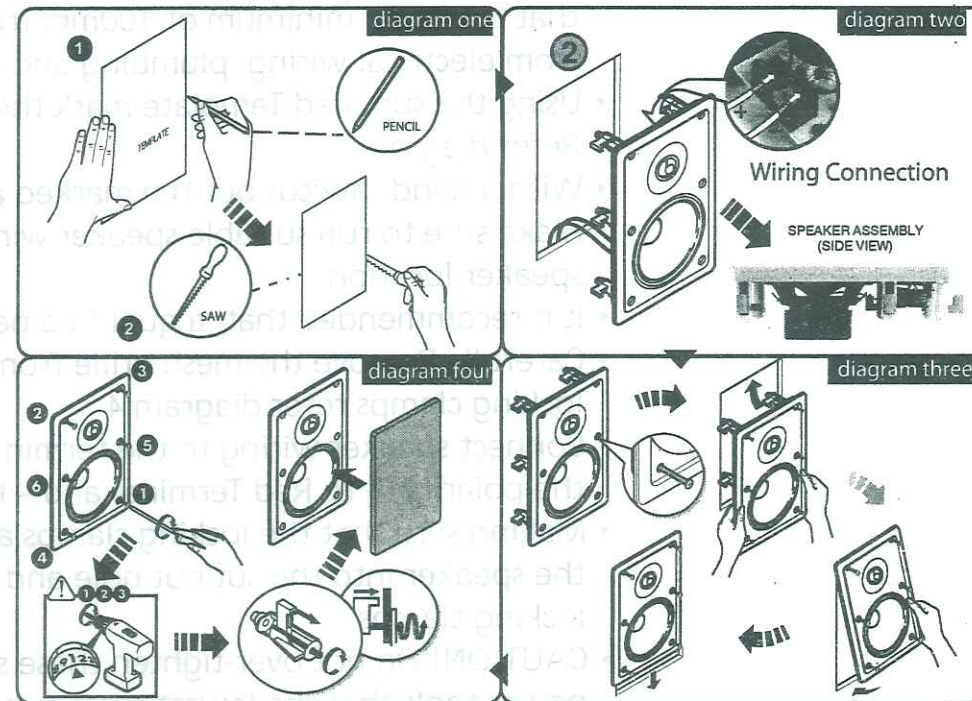
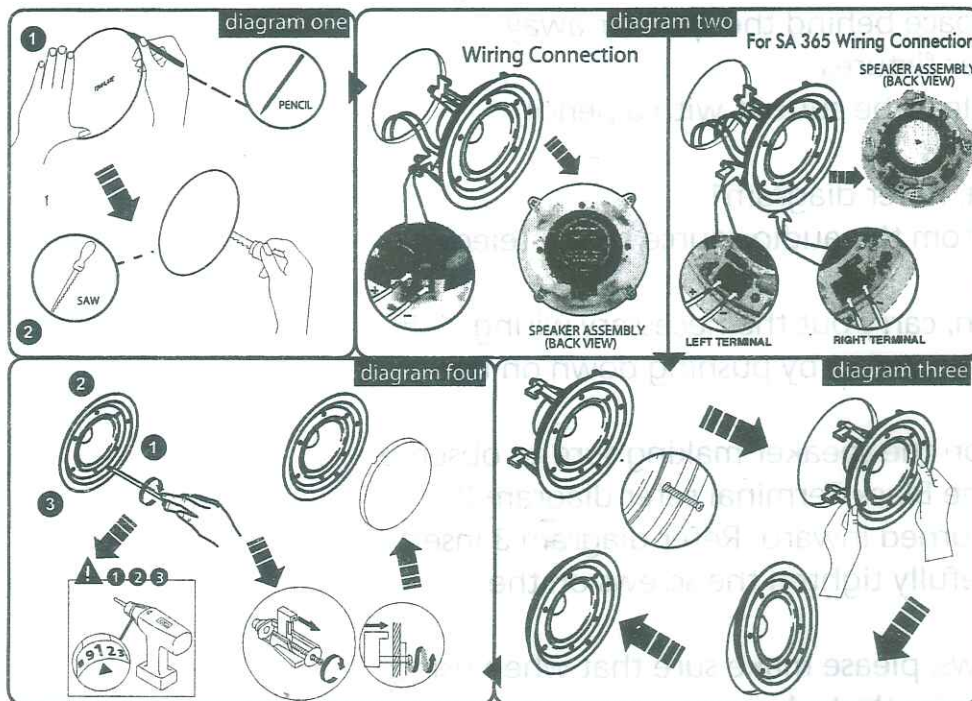


INSTALLATION INSTRUCTIONS



INSTALLATION INSTRUCTIONS



INSTALLATION INSTRUCTIONS FOR *studi*acoustics IN WALL / IN CEILING SPEAKERS

- Select the desired location where the speakers need to be installed making sure that there is a minimum of 100mm free space behind the speaker away from electrical wiring, plumbing and other fixtures.
- Using the supplied Template mark the hole to be cut out with a pencil. Refer diagram 1
- With a hand saw cut out the marked area. Refer diagram 1
- Make sure to run suitable speaker wires from the audio source to the selected speaker location
- It is recommended that a qualified person, carry out the necessary wiring
- Carefully Remove the mesh grille from the speaker by pushing down on the locking clamps refer diagram 4
- Connect speaker wiring to the terminals on the speaker making sure to observe the polarity + to Red Terminal and - to the Black Terminal refer diagram 2
- Making sure that the locking clamps are turned inward. Refer diagram 3 insert the speaker into the cut out hole and carefully tighten the screws on the locking clamps.
- CAUTION! Do not over-tighten these screws, please make sure that when using power tools that the lowest torque setting is selected
- When tightening the screws, the locking clamp arms will move outward and lock the speaker in place.
- Tighten all the screws evenly.
- Replace the scrim and mesh grille. Refer diagram 5