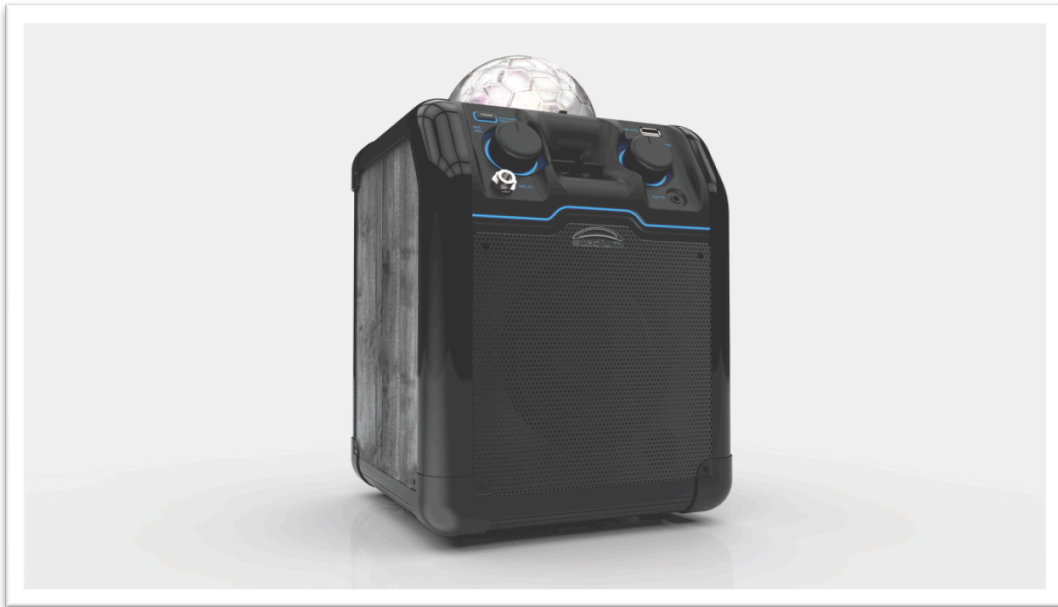


stadium PARTYMAKER LITE

Bluetooth party speaker with effects light and USB charging port



SPECIFICATIONS

Speaker Unit.....	1x4" Woofer+1x1" Tweeter
Total Peak Power Output.....	50 Watts
RMS Power Output.....	12 Watts
S/N Ratio.....	≥70dB
Frequency Response.....	30Hz~20KHz ±2dB
USB charging port.....	5V @ 2.1A
Auxiliary input.....	3.5mm
Microphone/Instrument input.....	6.5mm
Party Light.....	18W RGB (red, green, blue) 3 colours
Dimension (W x D x H).....	W214 x D205 x H255 mm
Weight.....	3.5 Kgs

BOX CONTENTS

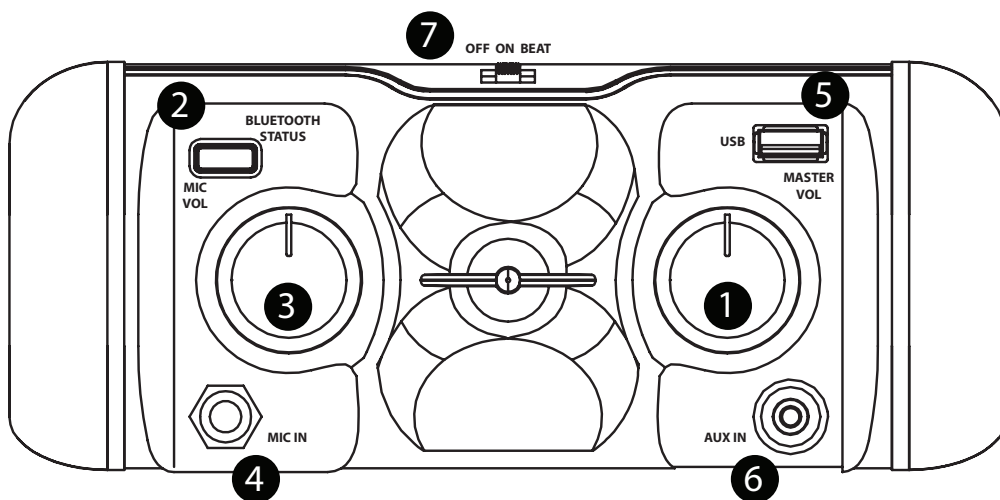
1. PARTYMAKER LITE
2. User manual
3. DC power transformer

Note: Music via AUX-IN and Bluetooth only.

Caution: Do not connect external portable hard drives to the USB port as this can result in damage to the unit.

PANEL DESCRIPTION

1. **MASTER VOLUME** : This knob controls the master volume of the PARTYMAKER LITE.
2. **SYNCING to BLUETOOTH DEVICES**: Turn power on PARTYMAKER LITE and (Search for "StadiumLT " on your device). Short press 1 second to turn off Bluetooth and reconnect to the stored paired device.
3. **MICROPHONE VOLUME** : This knob controls the level of the aux-in input.
4. **MICROPHONE IN**: This supports a 6.5mm(1/4 inch) jack input for microphones and instruments.
5. **USB Port** : Used to charge smart devices only (e.g. smart phone, iPod/iPhone/iPad).
(Caution: Do not connect external portable hard drives to the USB port as this can result in damage to the unit).
6. **AUX IN** : 3.5mm (Stereo) jack can be used to connect a CD player, MP3 player, smartphones or other audio sources.
7. **PARTY LIGHT ON/OFF** : Switch to OFF /ON/BEAT (Sound activated lighting effects).



8. **POWER TRANSFORMER** : Insert the included power cord to power the unit. The PARTYMAKER LITE powers via transformer and does not have internal battery power.
9. **POWER ON/OFF** : Turn the PARTYMAKER LITE ON or OFF.



IMPORTANT SAFETY INSTRUCTIONS

When used in the directed manner, this unit has been designed and manufactured to ensure your personal safety. However, improper use can result in potential electrical shock or fire hazards. Please read all safety and operating instructions carefully before installation and use, and keep these instructions handy for future reference. Take special note of all warnings listed in these instructions and on the unit.

- 1. Water and Moisture** – The unit should not be used near water. For example: near a bathtub, washbowl, kitchen sink, laundry tub, swimming pool or in a wet basement.
- 2. Ventilation** – The unit should be situated so that its location or position does not interfere with its proper ventilation. For example, it should not be situated on a bed, sofa, rug or similar surface that may block ventilation openings. Also, it should not be placed in a built-in installation, such as a bookcase or cabinet, which may impede the flow of air through the ventilation openings.
- 3. Heat** – The unit should be situated away from heat sources such as radiators, heat registers, stoves or other appliances (including amplifiers) that produce heat. It should also be kept out of direct sunlight on hot days.
- 4. Power Sources** – The unit should be connected to a power supply of the type described in the operating instructions or as marked on the appliance.
- 5. Power Cable Protection** – Power supply cables should be routed so that they are not likely to be walked on or pinched by items placed upon or against them. It is always best to have a clear area from where the cable exits the unit to where it is plugged into an AC socket.
- 6. Cleaning** – The unit should be cleaned only using a warm damp cloth. Do not use solvents, etc.
- 7. Objects and Liquid Entry** – Care should be taken so that objects do not fall and liquids are not spilled into any openings or vents located on the product.
- 8. Attachments** – Do not use attachments not recommended by the product manufacturer.
- 9. Lightning and Power Surge Protection** – Unplug the unit from the wall socket and disconnect cable system during a lightning storm or when it is left unattended and unused for long periods of time. This will prevent damage to the product due to lightning and power-line surges.
- 10. Overloading** – Do not overload wall sockets, extension cords, or integral convenience receptacles as this can result in a risk of fire or electric shock.
- 11. Damage Requiring Service** – The unit should be serviced by qualified service personnel only. For service contact our technical service department
- 12. Periods of Non-use** – If the unit is to be left unused for an extended period of time, the power cable should be unplugged from the unit to prevent damage.
- 13. Servicing** – The user should not attempt to service the unit beyond those methods described in the user's operating instructions. Service methods not covered in the operating instructions should be referred to qualified service personnel.

TECHNICAL SUPPORT

If you need assistance setting up or using your Stadium product now or in the future, call Stadium support Australia

TEL: 03 – 8587 8898 FAX: 03 – 8587 8866

Mon-Fri 9am – 5pm AEST

Please retain this user guide for future reference.

