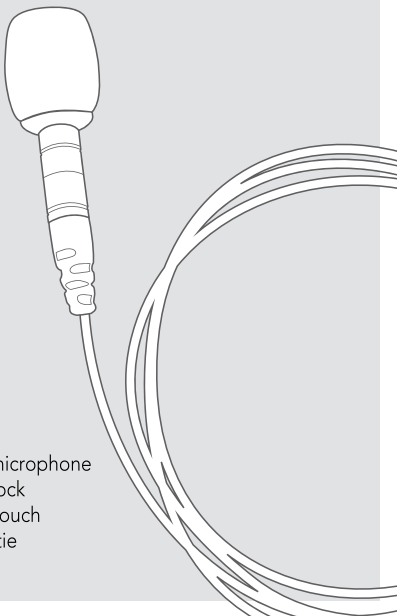


# LAPEL 1

stadium

Quickstart guide

## Lapel Microphone



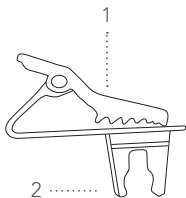
**Includes:**

1. Lapel microphone
2. Wind sock
3. Carry pouch
4. Velcro tie

### Parts guide

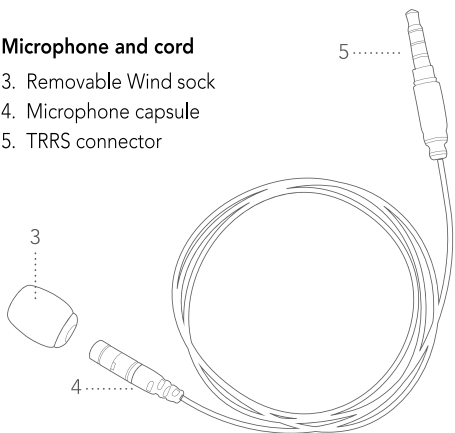
#### Clothing clip mount

1. Lapel clip
2. Microphone mounting clip



#### Microphone and cord

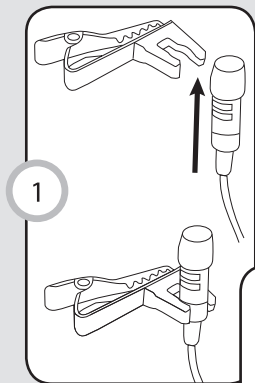
3. Removable Wind sock
4. Microphone capsule
5. TRRS connector



# LAPEL 1

stadium

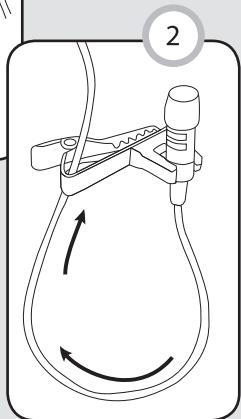
## How to use the mount



1. Insert the mic capsule into the arms of the clip

2. Loosely loop the cord back up and through the inside of the clip

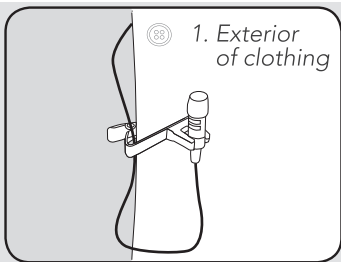
*This arrangement helps to minimise handling and mechanical noise and also minimises cable strain.*



# LAPEL 1

stadium

## Mounting mic on clothing



Attach the mic to lapel or clothing, about 15-20cm / 6 inches from face.

*Pro tip: Tape a loose loop in the mic cord on the inside of clothing.*

## Recording to devices

- The LAPEL1 is compatible and able to record with a range of phones, laptop computers and other audio devices that accept input via the 3.5mm headset jack.
- To record high quality audio you need to be able to set audio levels and sample rate, monitor your inputs, view the waveform as you record, and output to a variety of different audio formats. The built in tools on iOS and Android can't do this.
- Downloading a professional audio recording App to suit your device is required for quality recordings.

***NOTE: The quality of recordings may vary due to the different types of recording software.***

# LAPEL 1

**stadium**

## Microphone tips

- Attach the LAPEL1 **upside down** to reduce excessive breath noises and tonal inconsistencies due to head movements.
- Use the **wind sock** at all times to avoid plosives and environmental noise, even when recording inside.

## Technical Assistance

If you need assistance setting up or using your Stadium product now or in the future, call Stadium support Australia

TEL: 03 - 8587 8898

FAX: 03 - 8587 8866

Mon-Fri 9am - 5pm AEST

*Please retain this user guide for future reference*

[www.stadiumsound.com.au](http://www.stadiumsound.com.au)