

Service
Service
Service



Service Manual

ESP

WMA

DIVX

MP3

COMPACT
DISC
DIGITAL VIDEO

DOLBY
DIGITAL

TABLE OF CONTENTS

- Location of PCBS.....1
- Disassembly diagram.....2
- Software version check&upgrade.....3
- Set block diagram.....4
- Wiring diagram.....5
- Main board.....6
- Servo board.....7
- CB1+AV board.....8
- CB2+SD board.....9
- LB board.....10
- KEY board.....11
- Exploded view-main unit.....12
- Factory partlist.....13

**CLASS 1
LASER PRODUCT**

© Copyright 2008 Philips Consumer Electronics B.V. Eindhoven, The Netherlands
All rights reserved. No part of this publication may be reproduced, stored in a retrieval system or transmitted, in any form or by any means, electronic, mechanical, photocopying, or otherwise without the prior permission of Philips.

Published by DB 0930 Service Audio Printed in The Netherlands Subject to modification

© 3141 785 33202

Version 1.0



PHILIPS

SPECIFICATIONS

■ General

Power supply:	12V DC(11V-16V) negative ground
Fuse:	15A
Suitable speaker impedance:	4-8Ω
Maximum power output:	50Wx4channels
Continuous power output:	24Wx4channels(4Ω 10% T. H. D.)
Pre-Amp output voltage:	2.0V(CD play mode; 1kHz, 0dB, 10KΩ load)
Subwoofer output voltage:	2.0V (CD play mode)
Aux-in level:	≥500mV
Dimensions(WxHxD):	188x58x193mm
Weight:	1.9kg

■ Disc Player

System:	Disc digital audio system
Frequency response:	20Hz-20k Hz
Signal/noise ratio:	>75dB
Total harmonic distortion:	Less than 0.3%(1KHz)
Channel separation:	>55dB
Video signal for mat:	NTSC/PAL/AUTO
Video output:	1+0.2V

■ LCD

Screen size:	3.5 inches(16.91)
Display resolution:	320x234 dots
Active area:	76.32x42.822mm
Dot pitch:	0.2385x0.183mm
Contrast ratio:	350
Brightness:	220cd/m

■ Tuner

Frequency range	87.5-108.0MHz(Eur)
-FM	65.0-74.0MHz(OIRT)
	87.5-107.9MHz(Ame)
Frequency range	522-1620KHz(Eur)
-AM(MW)	530-1710MHz(Ame)
Usable sensitivity	8uV
-FM	
Usable sensitivity	30uV
-AM(MW)(S/N=20dB)	
Frequency response	30Hz-15KHz
Stereo separation	30db(1KHz)
Signal/noise ratio	>55dB

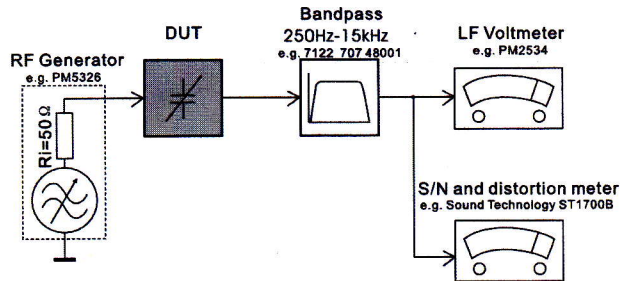
■ Components

Front panel carry case	1
Car audio system	1
Trim plate	1
Remote control	1
Rubber cushion	1
Standard connector	1
Removal keys	2
Screws M5X6mm	4
User manual	1
Quike start guide	1
MP3-link wire	1

Note: Specifications and design are subject to change without notice for product improvements.

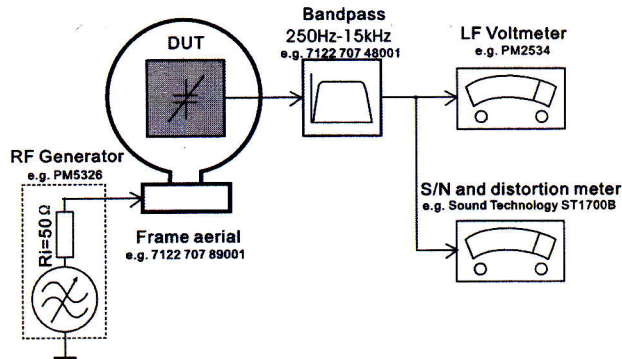
MEASUREMENT SETUP

Tuner FM



Use a bandpass filter to eliminate hum(50Hz, 100Hz) and disturbance from the pilotone(19kHz, 38kHz).

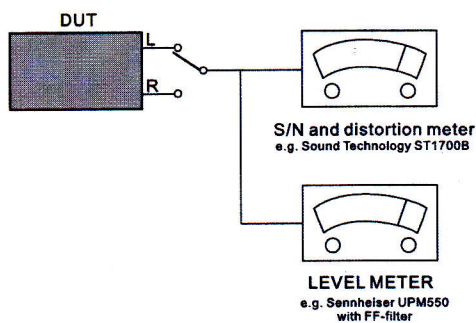
Tuner AM (MW, LW)



To avoid atmospheric interference all AM-measurements have to be carried out in a Faraday's cage. Use a bandpass filter (or at least a high pass filter with 250Hz) to eliminate hum (50Hz, 100Hz).

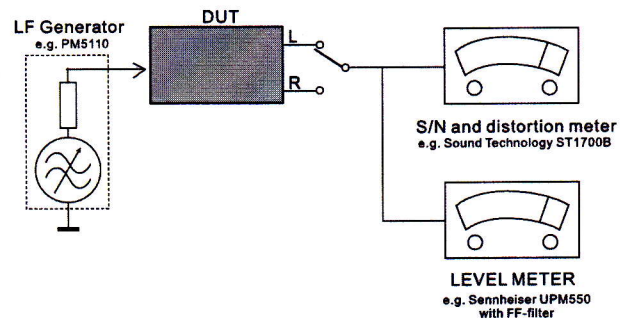
CD

Use Audio Signal Disc SBC429 4822 397 30184 (replaces test disc 3)



Cassette

Use Universal Test Cassette Cr02 SBC419 4822 397 30069 or Universal Test Cassette Fe SBC420 4822 397 30071



SERVICE AIDS

WARNING


All ICs and many other semi-conductors are susceptible to electrostatic discharges (ESD). Careless handling during repair can reduce life drastically.

When repairing, make sure that you are connected with the same potential as the mass of the set via a wrist wrap with resistance. Keep components and tools also at this potential.

ESD



Safety regulations require that the set be restored to its original condition and that parts which are identical with those specified, be used

Safety components are marked by the symbol .

**CLASS 1
LASER PRODUCT**

INFORMATION ABOUT LEAD-FREE SOLDERING

Philips CE is producing lead-free sets from 1.1.2005 onwards.

IDENTIFICATION:

Regardless of special logo (not always indicated) one must treat all sets from 1 Jan 2005 onwards, according next rules:



- On our website www.atyourservice.ce.Philips.com you find more information to:
 - * BGA-de-/soldering (+ baking instructions)
 - * Heating-profiles of BGAs and other ICs used in Philips-sets
 - * Lead free

You will find this and more technical information within the "magazine", chapter "workshop news".

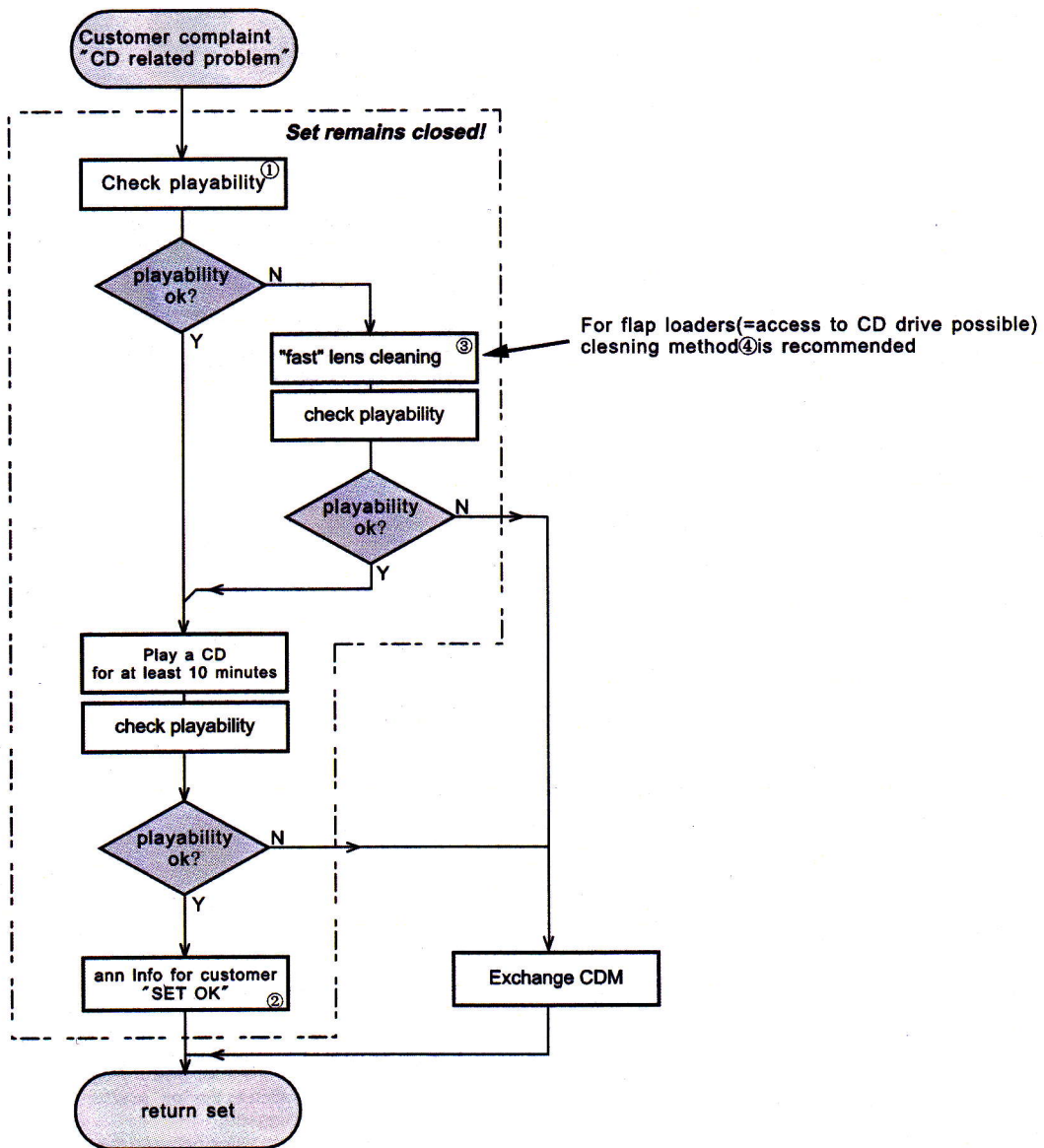
For additional questions please contact your local repair-helpdesk.

SERVICE INSTRUCTION

Safety regulations require that after a repair, the set must be returned in its original condition. Pay in particular attention to the following points:

- Route the wire trees correctly and fix them with the mounted cable clamps.
- Check the insulation of the AC Power lead for external damage.
- Check the strain relief of the AC Power cord for proper function.
- Check the electrical DC resistance between the AC Power Plug and the secondary side (only for sets which have a AC Power isolated power supply):
 1. Unplug the AC Power cord and connect a wire between the two pins of the AC Power plug.
 2. Set the AC Power switch to the "on" position (keep the AC Power cord unplugged!).
 3. Measure the resistance value between the pins of the AC Power plug and the metal shielding of the tuner or the aerial connection on the set. The reading should be larger than 4.5 Mohm (For U.S. it should be between 4.2 Mohm and 12 Mohm).
 4. Switch "off" the set, and remove the wire between the two pins of the AC Power plug.
- Check the cabinet for defects, to avoid touching of any inner parts by the customer.

INSTRUCTIONS ON CD PLAYABILITY



①-④For description-see following pages

INSTRUCTIONS ON CD PLAYABILITY

①

PLAYABILITY CHECK

For sets which are compatible with **CD-RW** discs
 use CD-RW Printed Audio Disc7104 099 96611
 TR 3 (Fingerprint)
 TR 8 (600µ Black dot) **maximum at 01:00**

- playback of these two tracks without audible disturbance
 playing time for: Fingerprint ≥ 10 seconds
 Black dot from 00:50 to 01:10
- jump forward/backward (search) within a reasonable time

For all other sets
 use CD-DA SBC 444A4822 397 30245
 TR 14 (600µ Black dot) **maximum at 01:15**
 TR 19 (Fingerprint)
 TR 10 (1000µ wedge)

- playback of all these tracks without audible disturbance
 playing time for: 1000µ wedge ≥ 10 seconds
 Fingerprint ≥ 10 seconds
 Black dot from 01:05 to 01:25
- jump forward/backward (search) within a reasonable time

②

CUSTOMER INFORMATION

It is proposed to add an addendum sheet to the set which informs the customer that the set has been checked carefully - but no fault was found. The problem was obviously caused by a scratched, dirty or copy-protected CD. In case problems remain, the customer is requested to contact the workshop directly. The lens cleaning (method ③) should be mentioned in the addendum sheet.

The final wording in national language as well as the printing is under responsibility of the Regional Service Organizations.

④

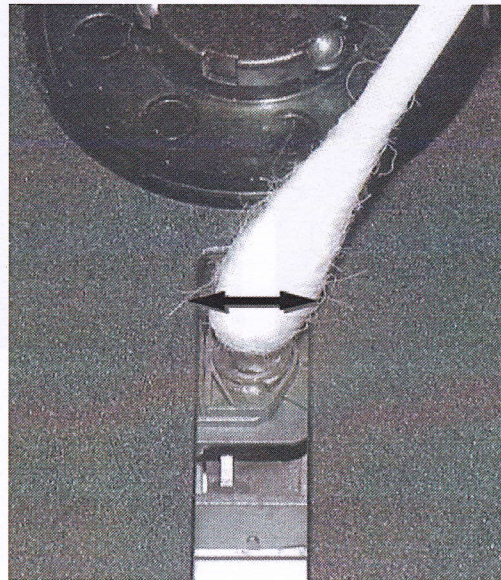
LIQUID LENS CLEANING

Before touching the lens it is advised to clean the surface of the lens by blowing clean air over it. This to avoid that little particles make scratches on the lens.

Because the material of the lens is synthetic and coated with a special anti-reflectivity layer, cleaning must be done with a non-aggressive cleaning fluid. It is advised to use "Cleaning Solvent

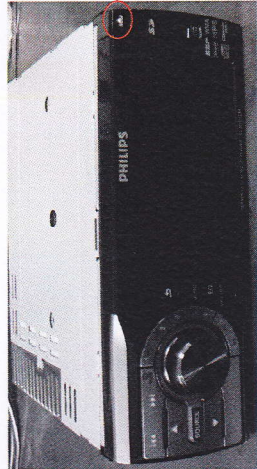
The actuator is a very precise mechanical component and may not be damaged in order to guarantee its full function. Clean the lens gently (don't press too hard) with a soft and clean cotton bud moistened with the special lens cleaner.

The direction of cleaning must be in the way as indicated in the picture below.



2-1

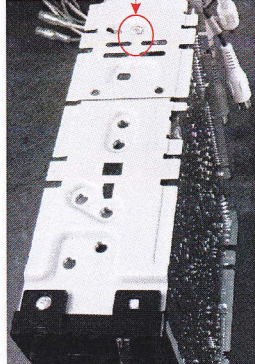
Disassembly Diagram



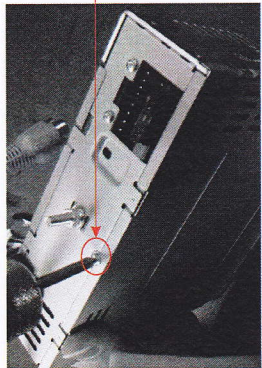
1. Remove the mounting sleeve with the removal keys. Press **▲** key and remove the front panel.



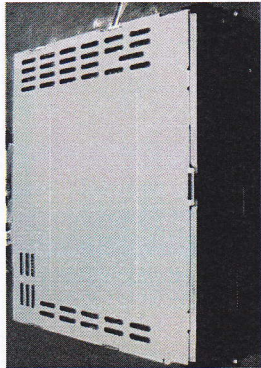
4. Remove the screw 3 as shown.



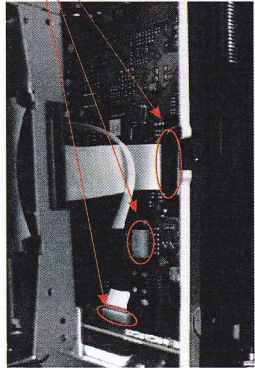
7. Remove the screw 5 with a screw driver.



2. Remove the two screws on the back side of the unit with a screw driver.

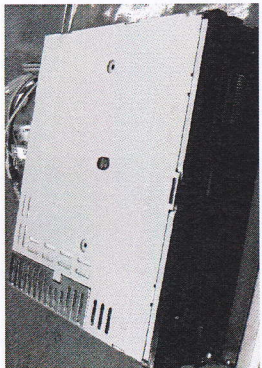


5. Remove the bottom cover with a tool.

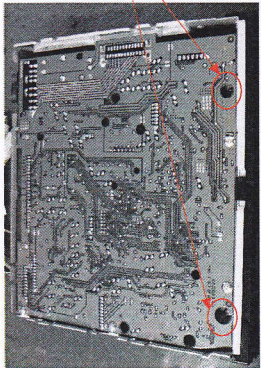


8. Remove the connectors 6, and then remove the mechanism core.

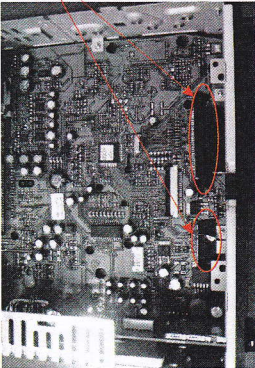
2-1



3. Remove the upper cover with a tool.



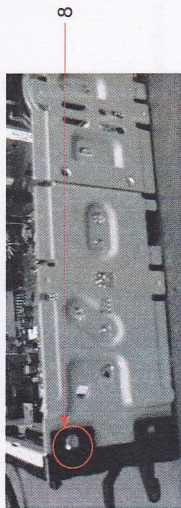
6. Remove the screws 4 with a screw driver.



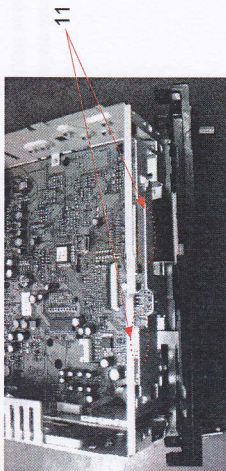
9. Remove the adhesive tapes 7.

2-2

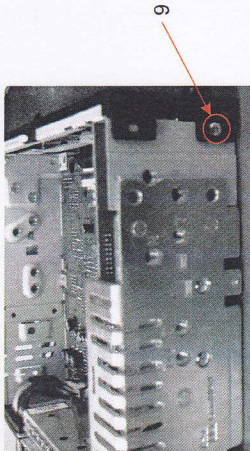
Disassembly Diagram



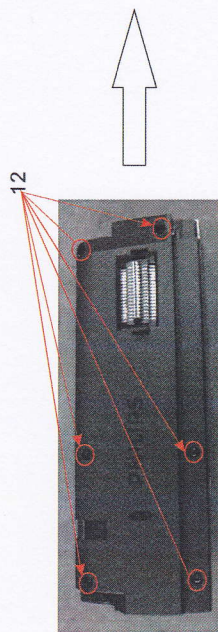
10. Remove the screw 8 .



13. Remove the connectors 11, and then remove the bracket with a tool.

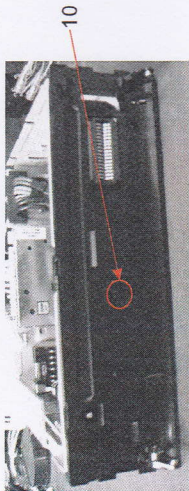


11. Remove the screw 9 .

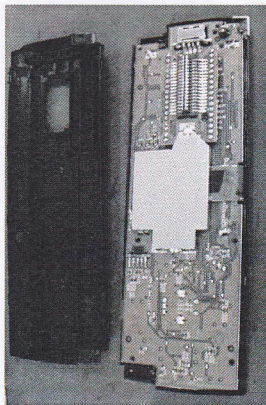


14. Remove the screws 12.

2-2



12. Remove the screw 10 .



Software version check & upgrade

Check MCU software version

1. Copy the file "MCU.BIN" into USB stick
2. Power on the device, and plug the USB stick into USB socket.
After the device read the content in the USB, the LCD will show a upgrade menu, and enter into the upgrading status.
3. The LCD will appear a number (changed from 20 to 0), and when arrived the number 0, then appear a processing bar, which mean the device enters upgrading status.
4. In step 3, if want to enter into upgrading status quickly, press the key OK to confirm, the processing bar will appear immediately.
5. Disconnect the USB stick.
6. When software upgrade complete, the device will power off automatically.

Check Servo software version

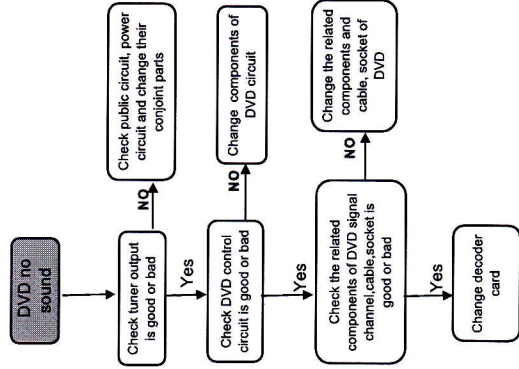
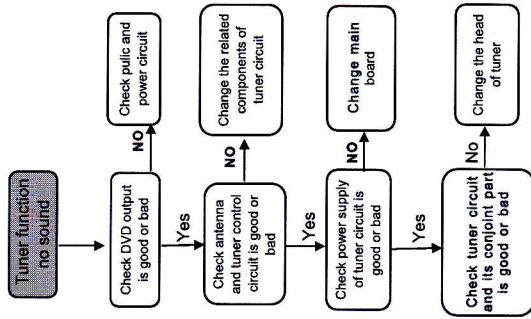
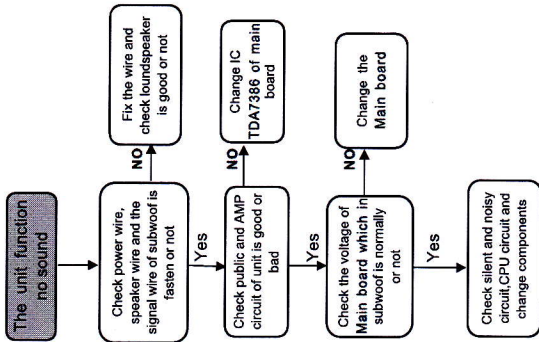
1. Copy the file "ROM.BIN" into USB stick (note to delete the file "MCU.BIN").
2. Power on the device, and plug the USB stick into USB socket. After the device read the content in the USB, the LCD will show a upgrade menu, and enter into the upgrading status.
3. The LCD will appear a number(changed from 20 to 0), and when arrived the number 0, then appear a processing bar, which mean the device enters upgrading status.
4. Press the key OK to confirm, the processing bar will appear immediately.
5. Disconnect the USB stick.
6. When software upgrade complete, the device will change to disc mode automatically.

Upgrade software

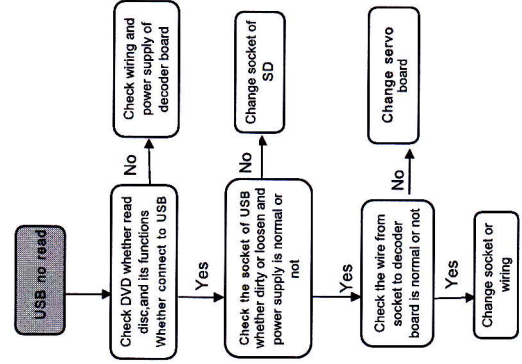
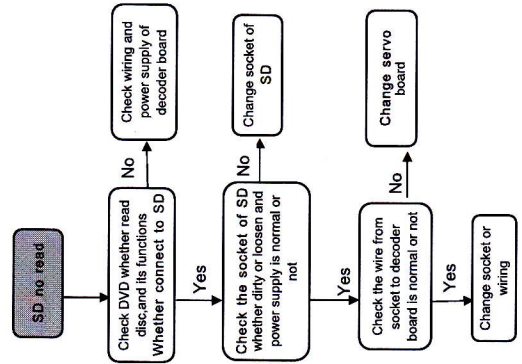
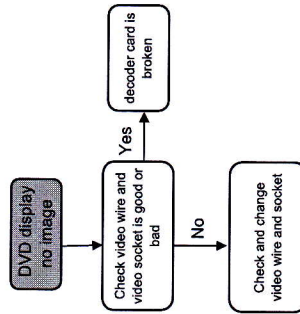
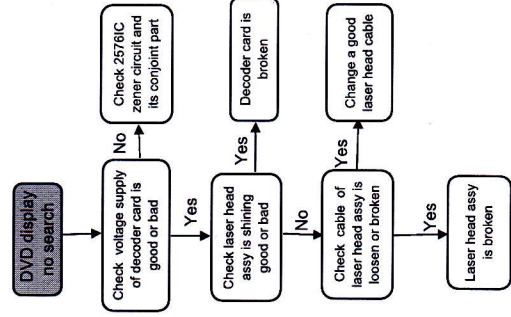
When the device is power on at the first time, in USB/SD/Disc mode, press the key in turn:
stop→up→down→left→right
The LCD will display the servo software, MCU, TFT version number.

Malfunction check chart

3-2



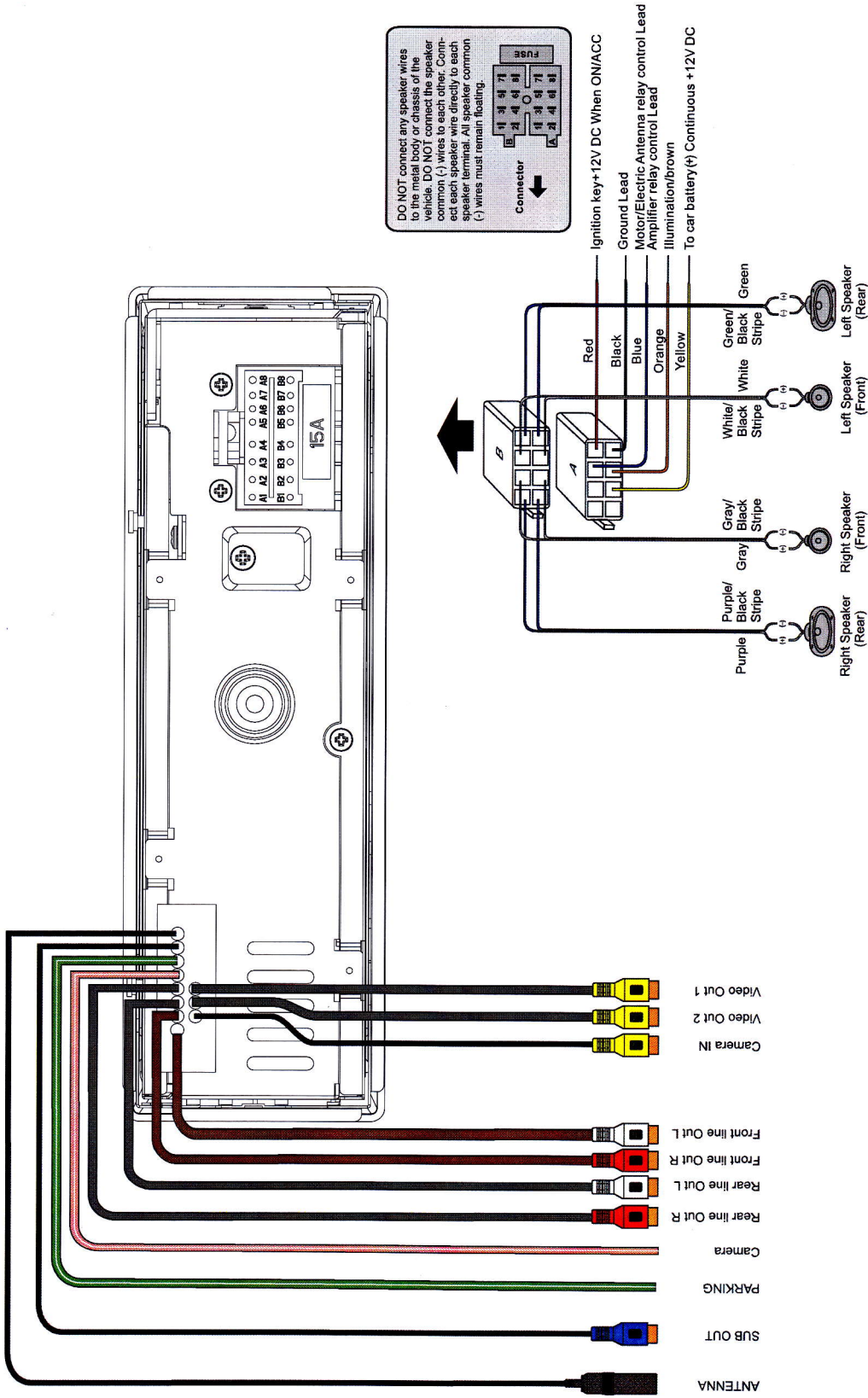
3-2



WIRING DIAGRAM

5-1

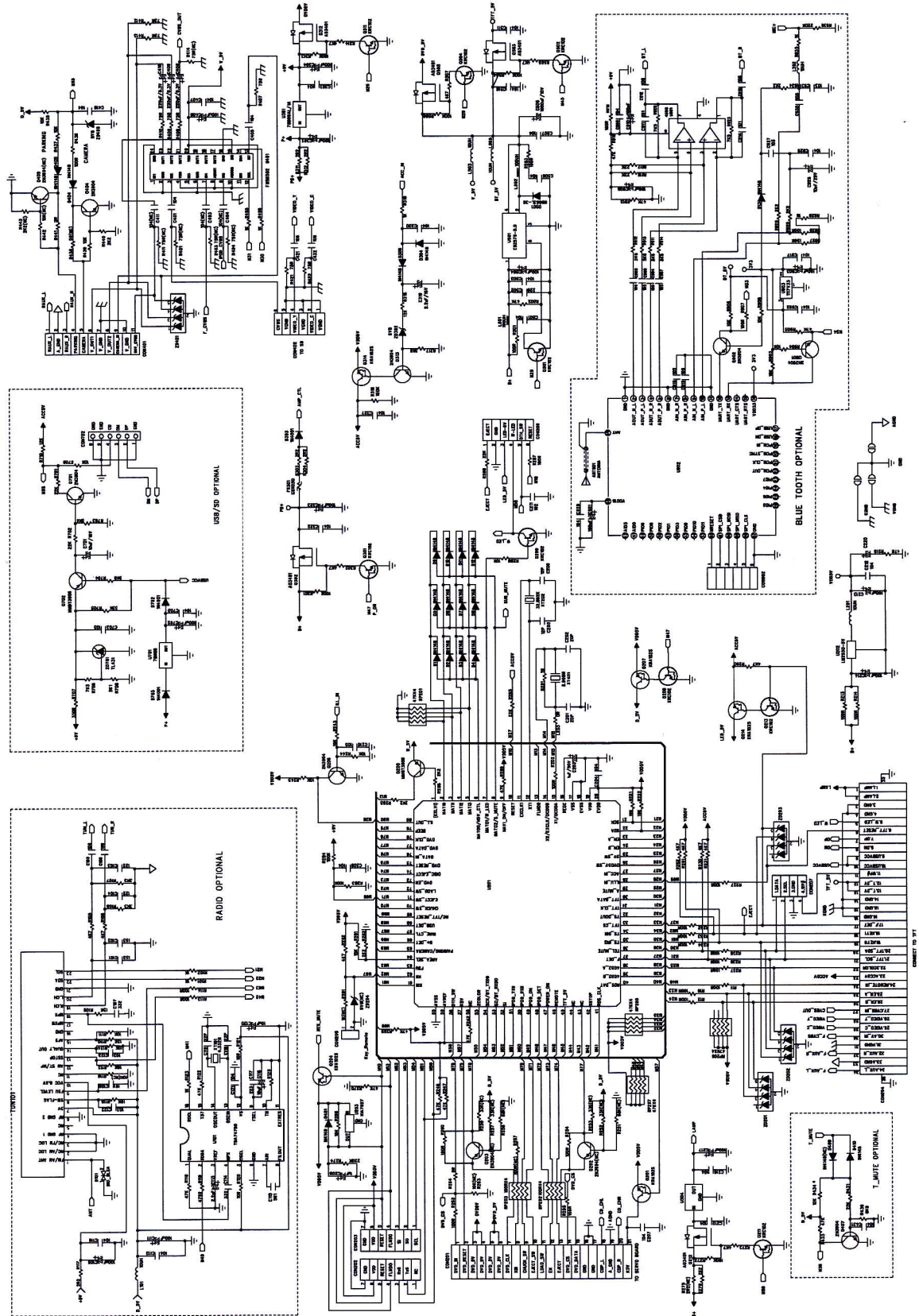
5-1



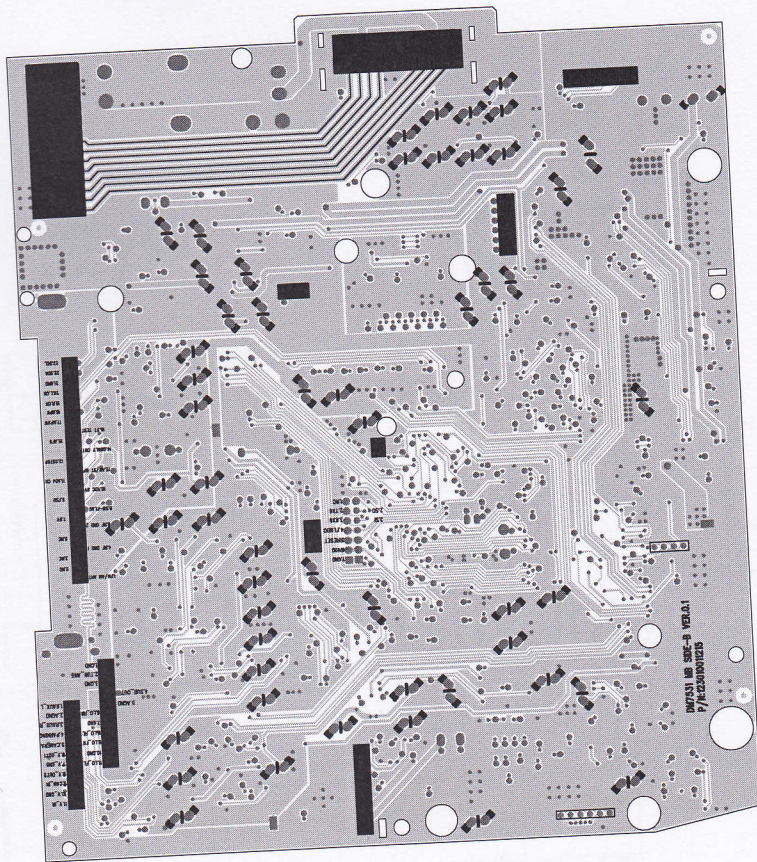
6-1

6-1

MAIN BOARD-CIRCUIT DIAGRAM-1

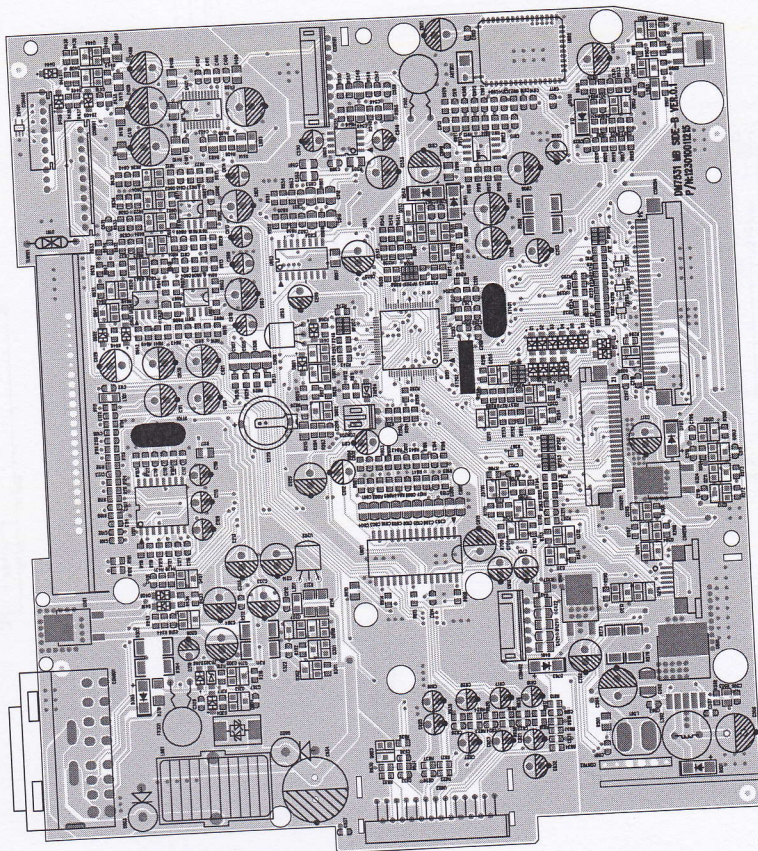


6-3

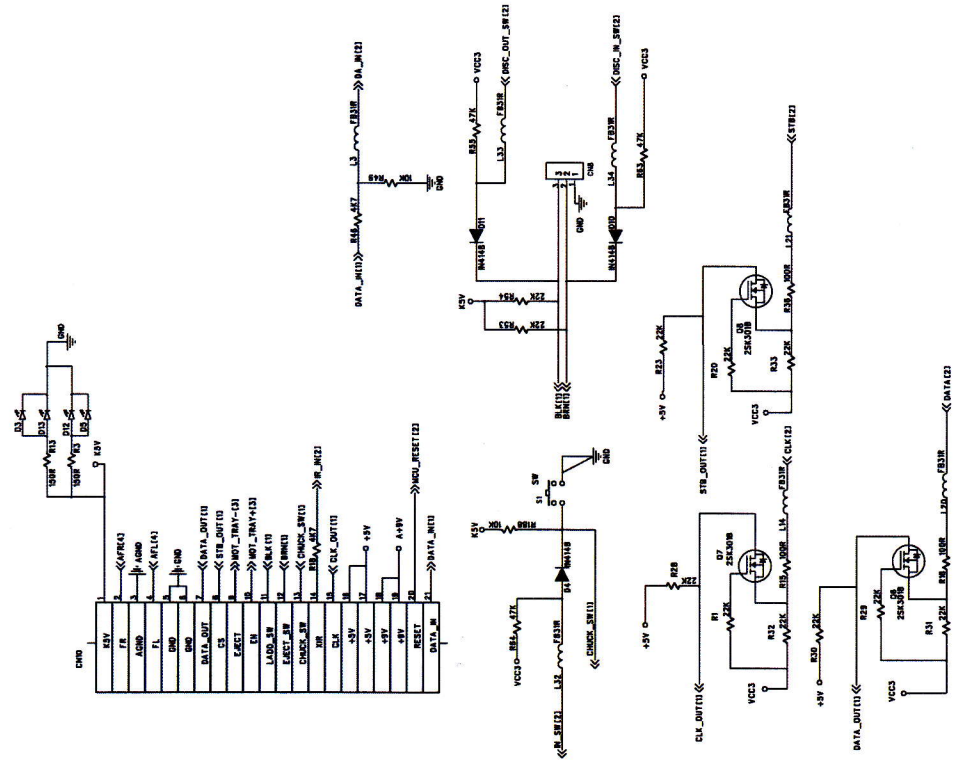
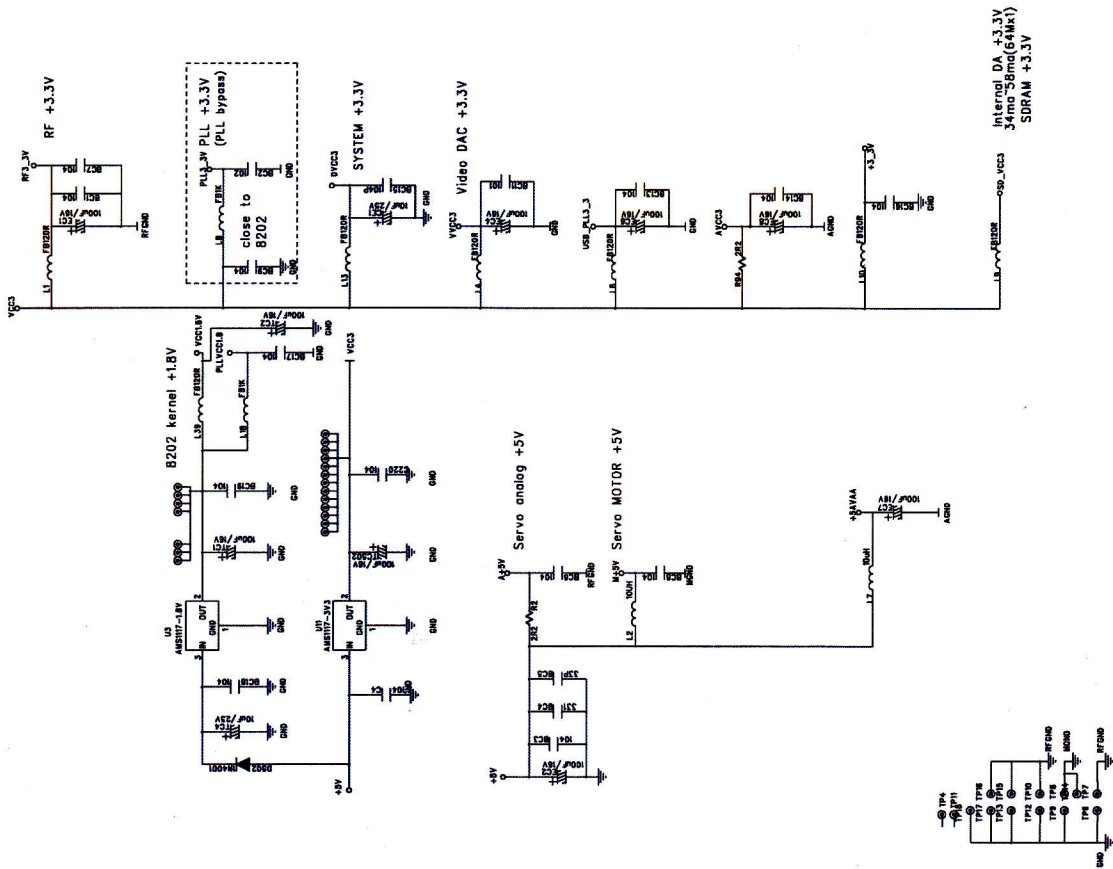


6-3

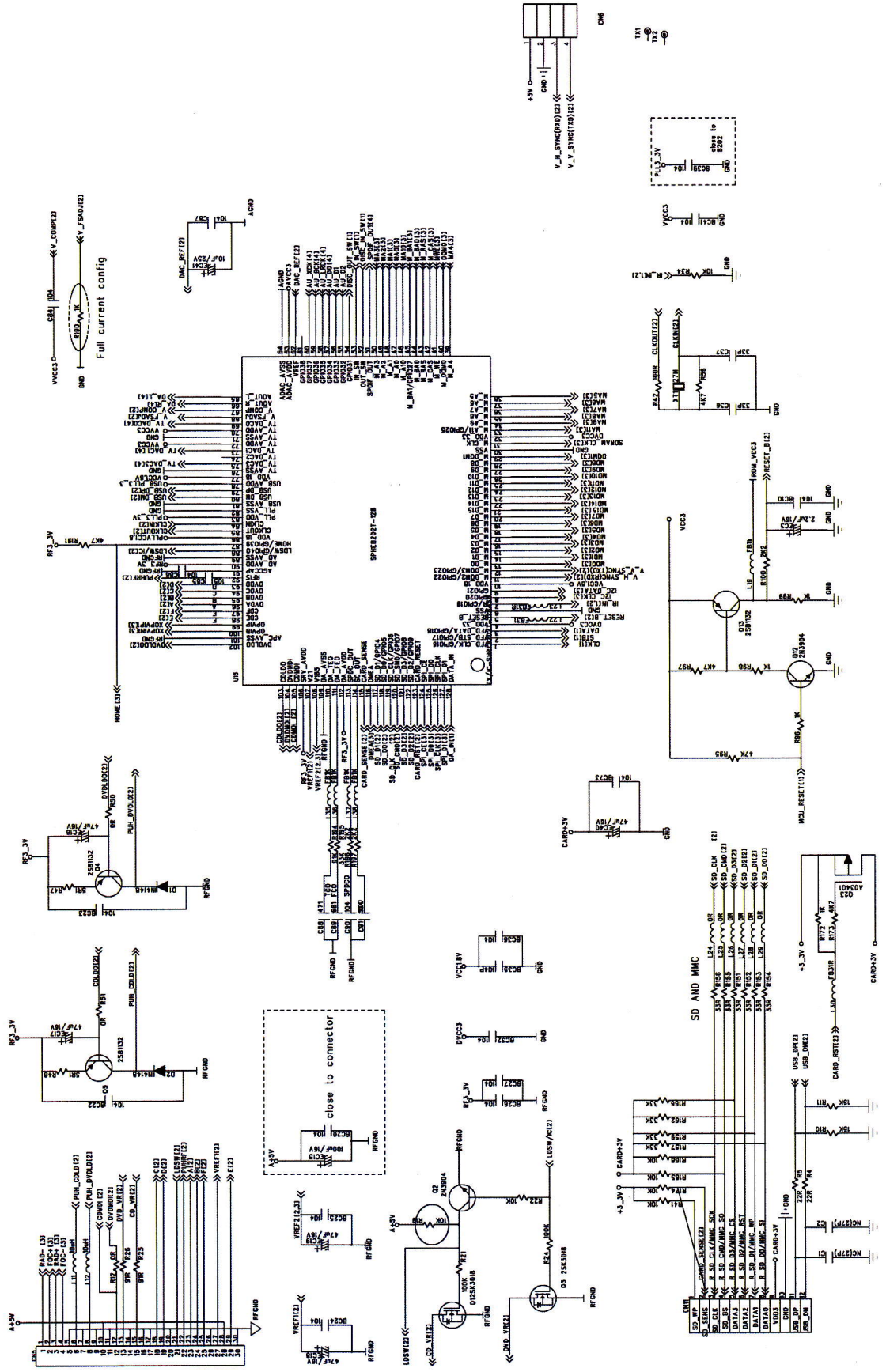
MAIN BOARD-PCB LAYOUT TOP/BOTTOM VIEW



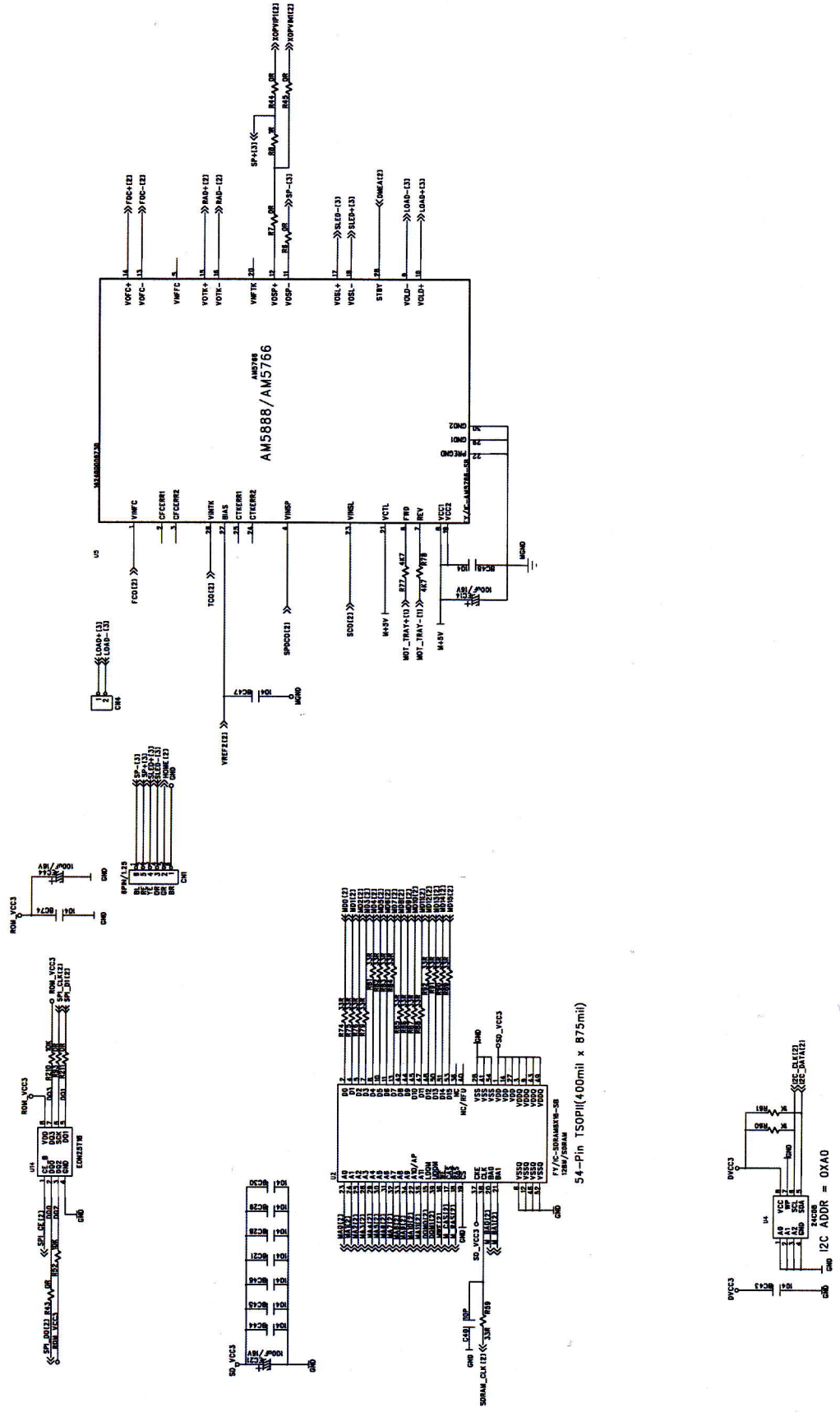
SERVO BOARD-CIRCUIT DIAGRAM-1



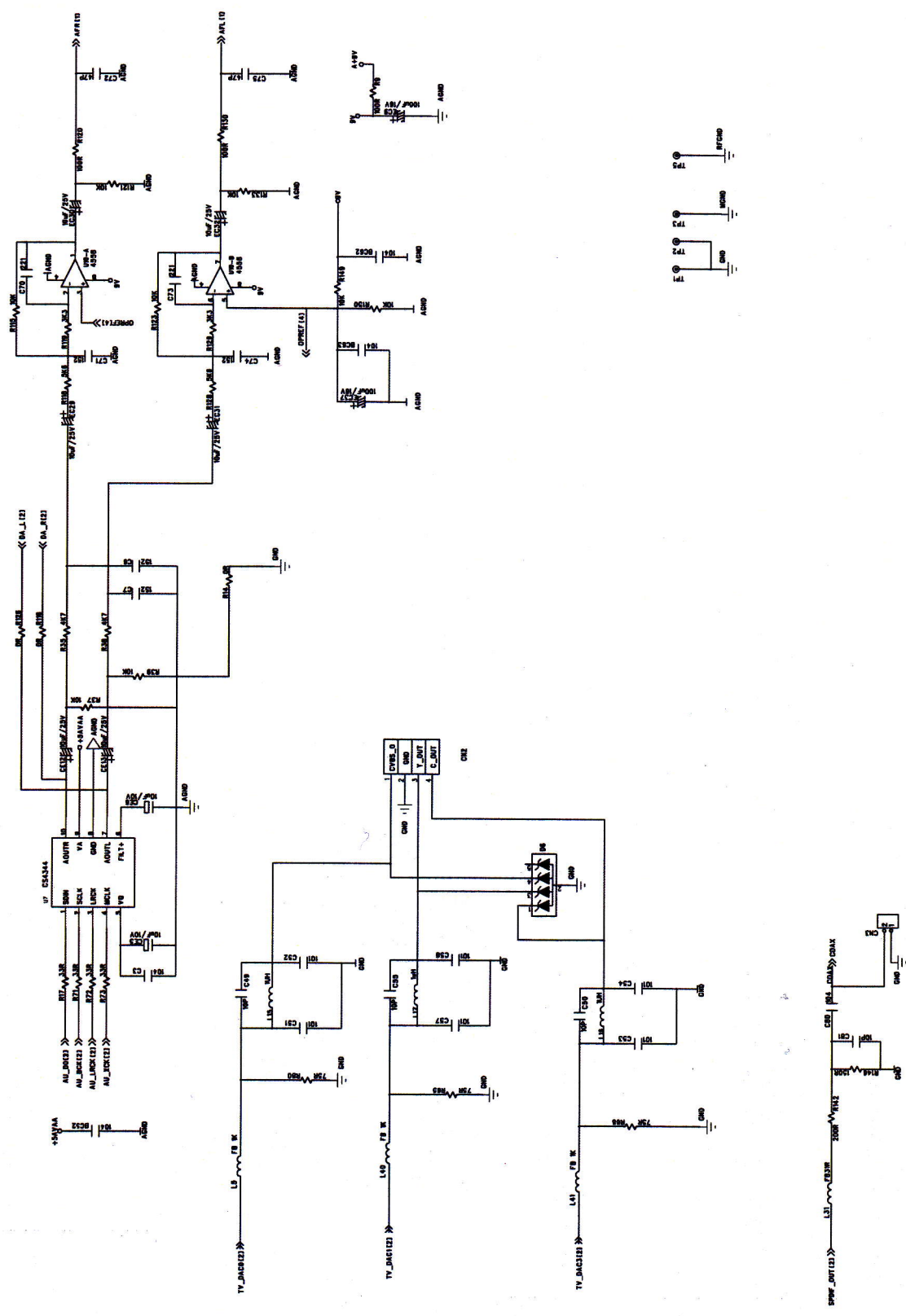
SERVO BOARD-CIRCUIT DIAGRAM-2



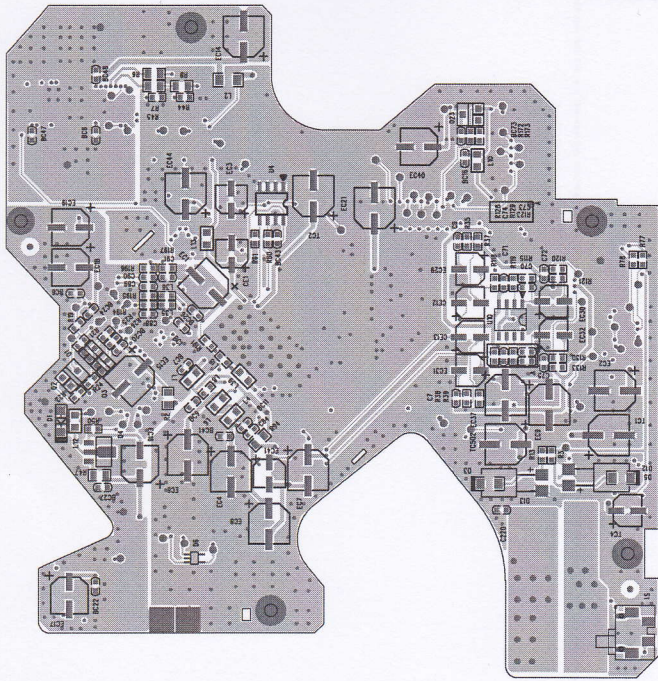
SERVO BOARD-CIRCUIT DIAGRAM-3



SERVO BOARD-CIRCUIT DIAGRAM-4

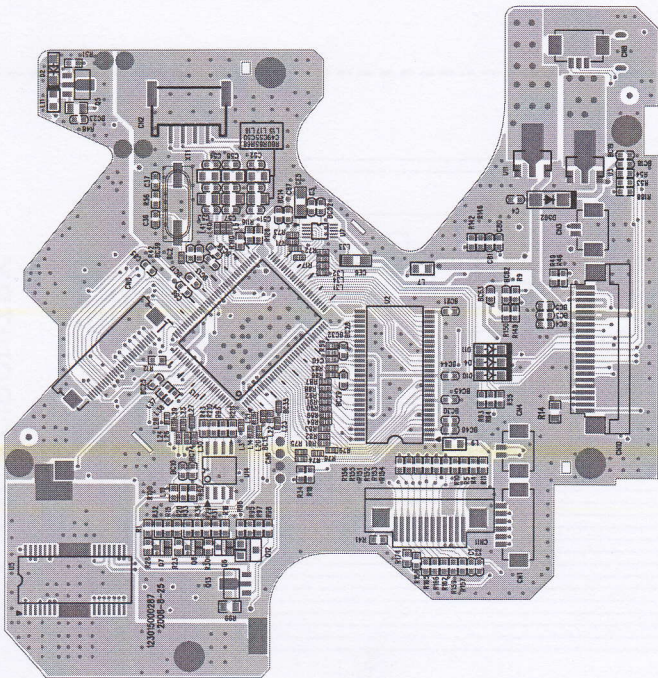


7-5

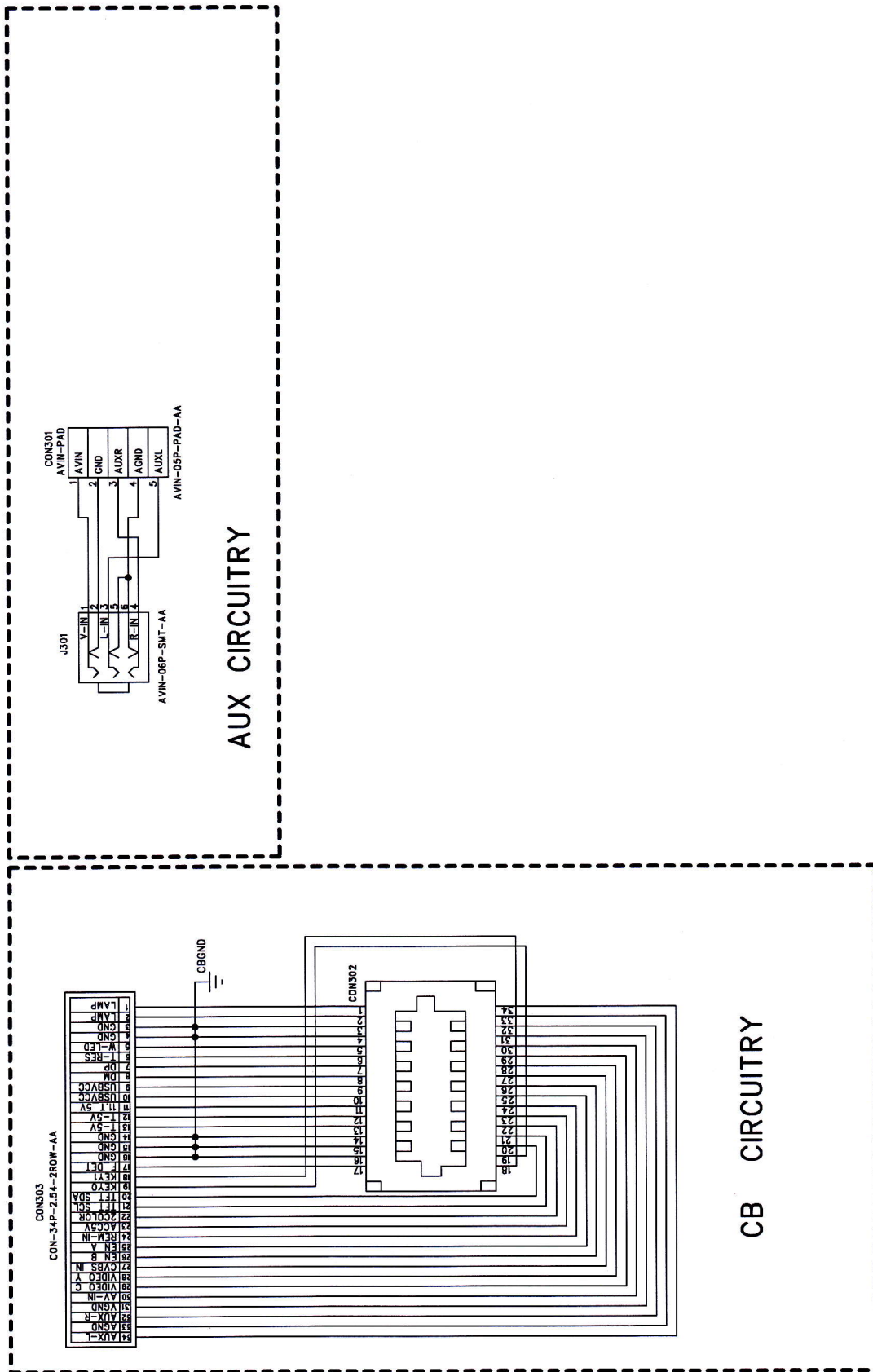


7-5

SERVO BOARD-LAYOUT DIAGRAM TOP/BOTTOM VIEW



CB+AV BOARD-CIRCUIT DIAGRAM

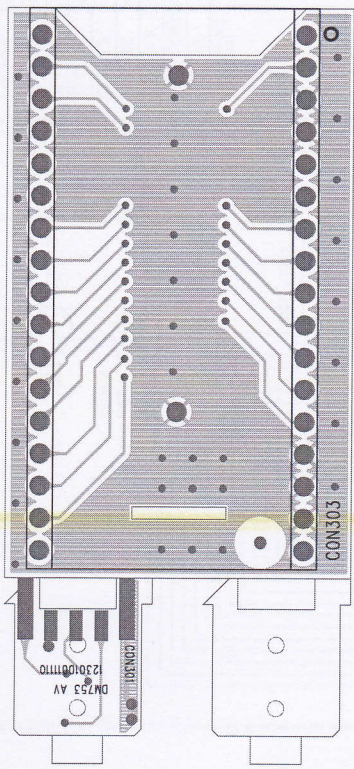


AUX CIRCUITRY

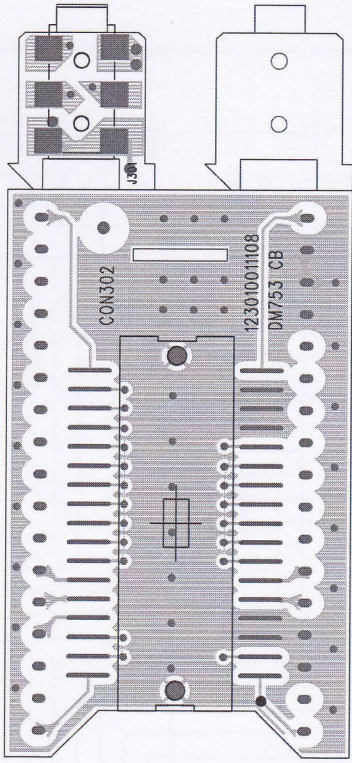
CB CIRCUITRY

8-2

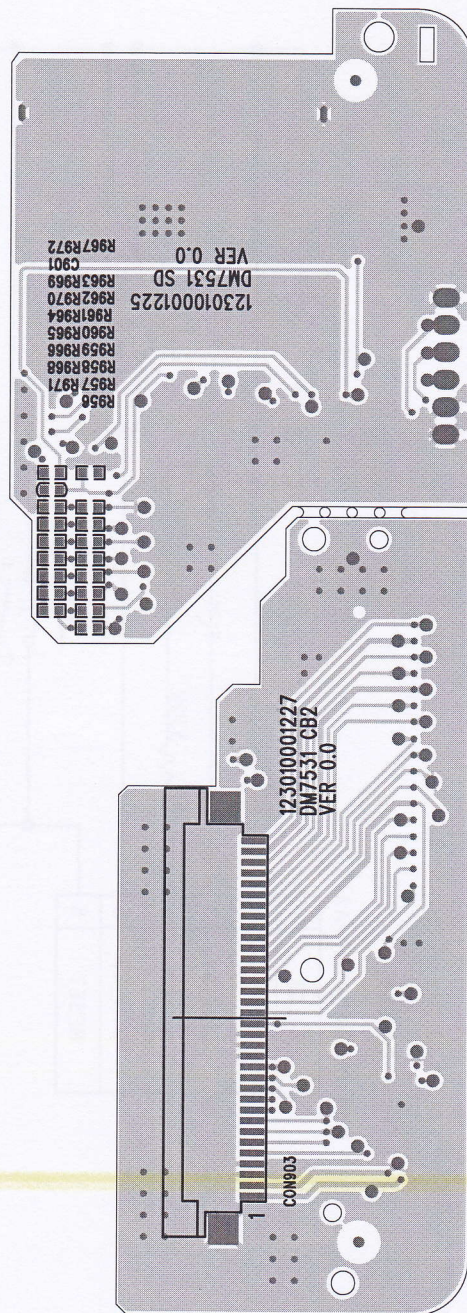
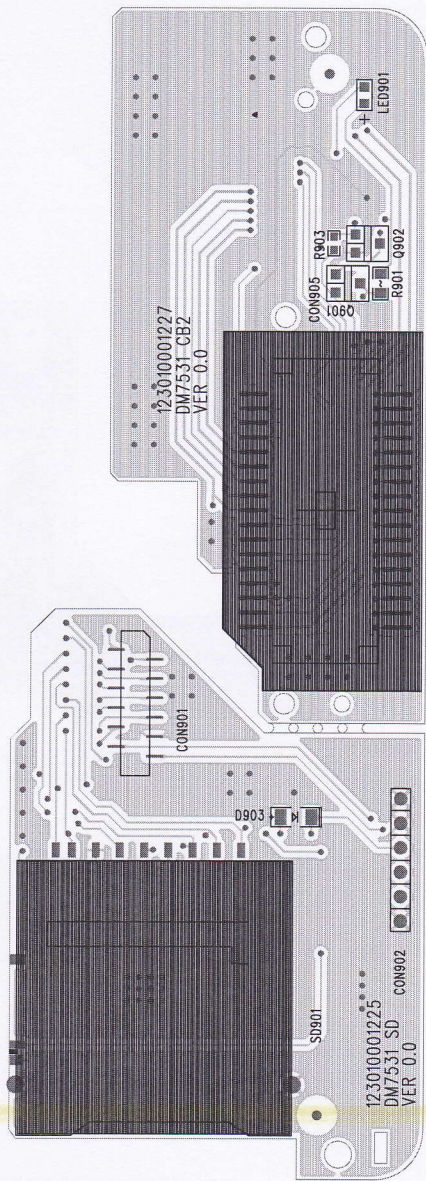
CB+AV BOARD-PCB LAYOUT TOP/BOTTOM VIEW



8-2

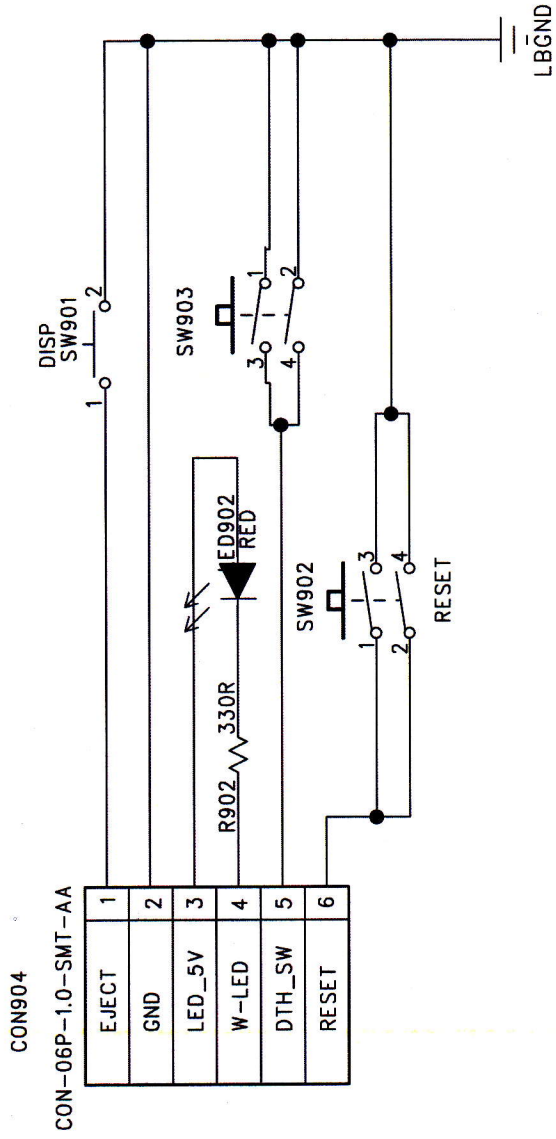


CB2+SD BOARD-PCB LAYOUT TOP/BOTTOM VIEW



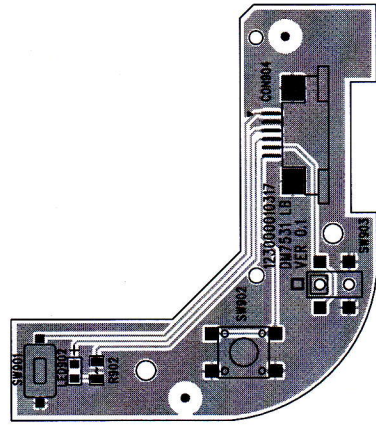
10-1

LB BOARD-CIRCUIT DIAGRAM



10-1

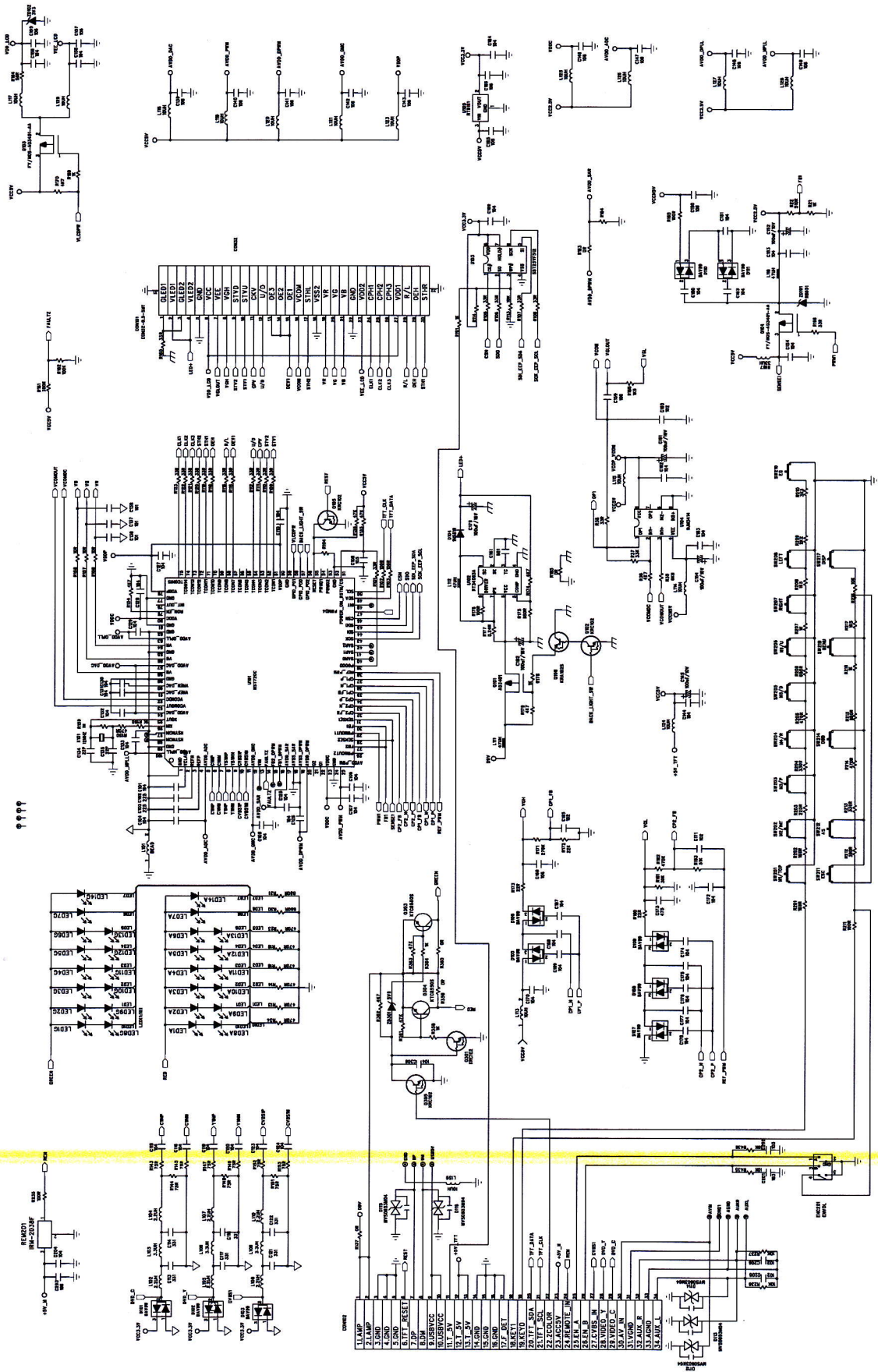
LB BOARD-LAYOUT DIAGRAM TOP VIEW



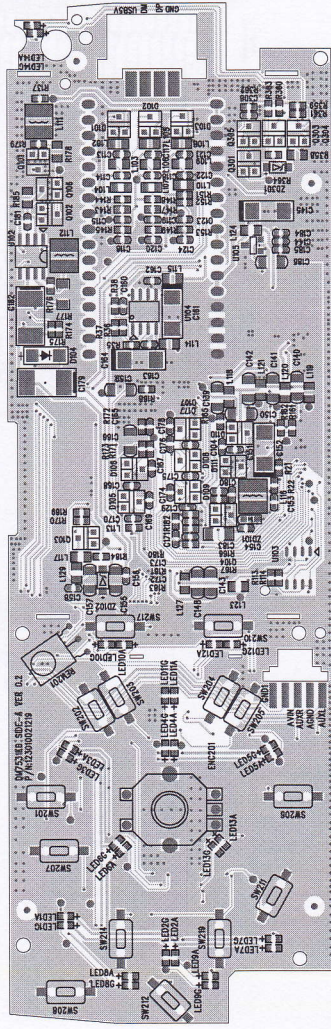
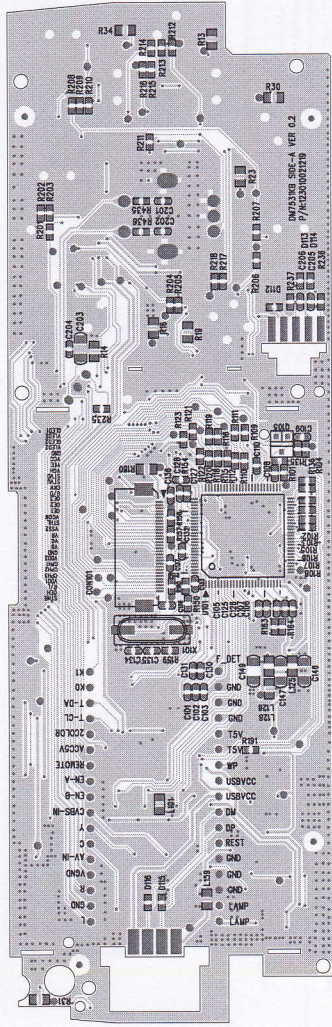
KEY BOARD-CIRCUIT DIAGRAM

11-1

11-1



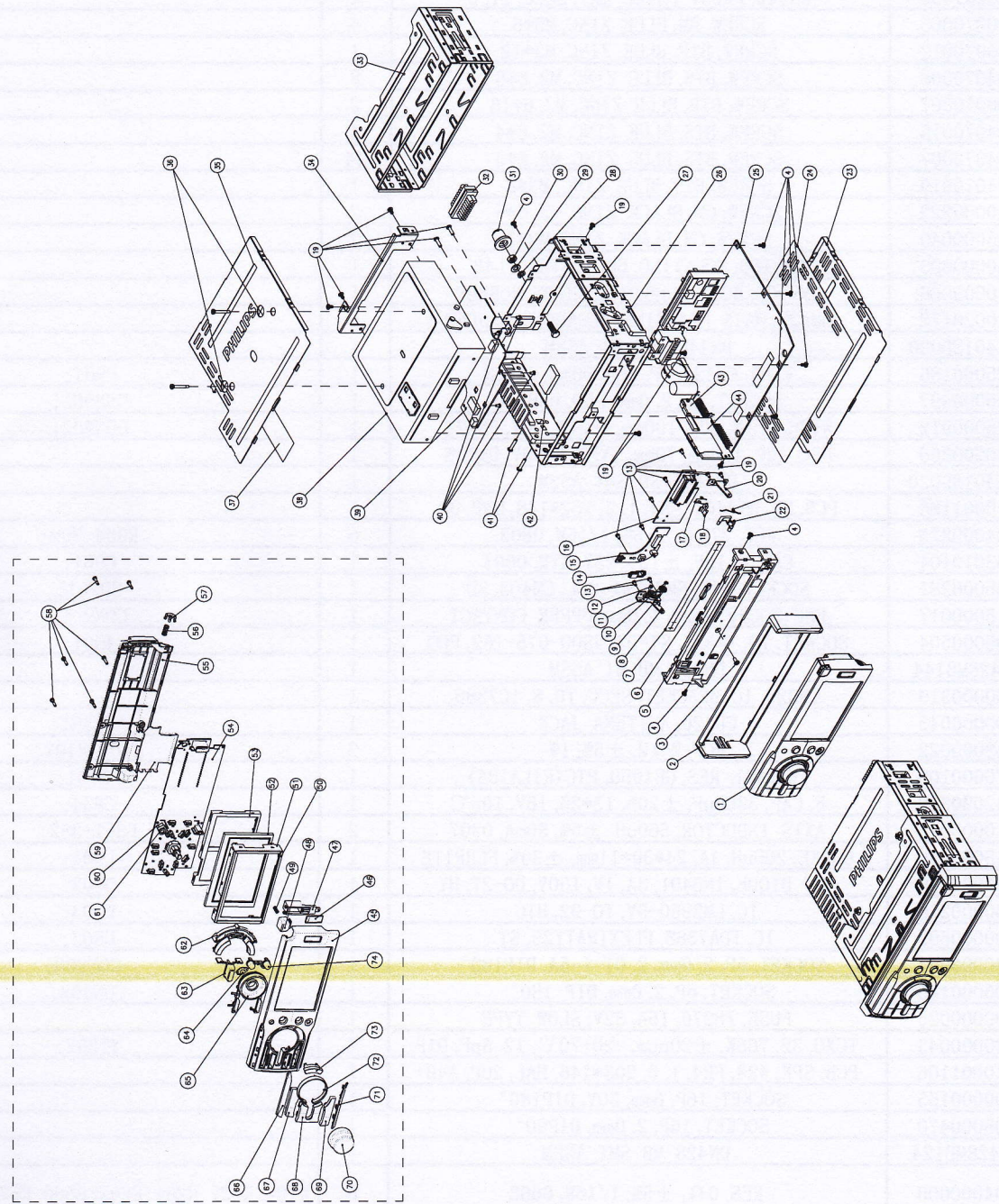
KEY BOARD-LAYOUT DIAGRAM TOP/BOTTOM VIEW



12-1

12-1

EXPLODED VIEW-MAIN UNIT



Item	Amount	Part No.	Description	Quantity	Remarks
74	1	121250101884018	WINDSHIELD BRACKET	1	
73	1	121250101888019	WINDSHIELD BRACKET	1	
72	1	12125010201014	WINDSHIELD BRACKET	1	
71	1	121250101888014	WINDSHIELD BRACKET	1	
70	1	121250101888014	WINDSHIELD BRACKET	1	
69	1	121250101888019	WINDSHIELD BRACKET	1	
68	1	121250101888019	WINDSHIELD BRACKET	1	
67	1	121250101888019	WINDSHIELD BRACKET	1	
66	1	1212501020220014	WINDSHIELD BRACKET	1	
65	1	121250101888019	WINDSHIELD BRACKET	1	
64	1	121250101888019	WINDSHIELD BRACKET	1	
63	1	121250101888019	WINDSHIELD BRACKET	1	
62	1	121250101888019	WINDSHIELD BRACKET	1	
61	1	121250101888019	WINDSHIELD BRACKET	1	
60	1	121250101888019	WINDSHIELD BRACKET	1	
59	1	121250101888019	WINDSHIELD BRACKET	1	
58	1	121250101888019	WINDSHIELD BRACKET	1	
57	1	121250102000000	WINDSHIELD BRACKET	1	
56	1	121250101888019	WINDSHIELD BRACKET	1	
55	1	121250101888019	WINDSHIELD BRACKET	1	
54	1	121250101888019	WINDSHIELD BRACKET	1	
53	1	121250101888019	WINDSHIELD BRACKET	1	
52	1	121250101888019	WINDSHIELD BRACKET	1	
51	1	121250101888019	WINDSHIELD BRACKET	1	
50	1	121250101888019	WINDSHIELD BRACKET	1	
49	1	121250101888019	WINDSHIELD BRACKET	1	
48	1	121250101888019	WINDSHIELD BRACKET	1	
47	1	121250101888019	WINDSHIELD BRACKET	1	
46	1	121250101888019	WINDSHIELD BRACKET	1	
45	1	121250101888019	WINDSHIELD BRACKET	1	
44	1	121250101888019	WINDSHIELD BRACKET	1	
43	1	121250101888019	WINDSHIELD BRACKET	1	
42	1	121250101888019	WINDSHIELD BRACKET	1	
41	1	121250101888019	WINDSHIELD BRACKET	1	
40	1	121250101888019	WINDSHIELD BRACKET	1	
39	1	121250101888019	WINDSHIELD BRACKET	1	
38	1	121250101888019	WINDSHIELD BRACKET	1	
37	1	121250101888019	WINDSHIELD BRACKET	1	
36	1	121250101888019	WINDSHIELD BRACKET	1	
35	1	121250101888019	WINDSHIELD BRACKET	1	
34	1	121250101888019	WINDSHIELD BRACKET	1	
33	1	121250101888019	WINDSHIELD BRACKET	1	
32	1	121250101888019	WINDSHIELD BRACKET	1	
31	1	121250101888019	WINDSHIELD BRACKET	1	
30	1	121250101888019	WINDSHIELD BRACKET	1	
29	1	121250101888019	WINDSHIELD BRACKET	1	
28	1	121250101888019	WINDSHIELD BRACKET	1	
27	1	121250101888019	WINDSHIELD BRACKET	1	
26	1	121250101888019	WINDSHIELD BRACKET	1	
25	1	121250101888019	WINDSHIELD BRACKET	1	
24	1	121250101888019	WINDSHIELD BRACKET	1	
23	1	121250101888019	WINDSHIELD BRACKET	1	
22	1	121250101888019	WINDSHIELD BRACKET	1	
21	1	121250101888019	WINDSHIELD BRACKET	1	
20	1	121250101888019	WINDSHIELD BRACKET	1	
19	1	121250101888019	WINDSHIELD BRACKET	1	
18	1	121250101888019	WINDSHIELD BRACKET	1	
17	1	121250101888019	WINDSHIELD BRACKET	1	
16	1	121250101888019	WINDSHIELD BRACKET	1	
15	1	121250101888019	WINDSHIELD BRACKET	1	
14	1	121250101888019	WINDSHIELD BRACKET	1	
13	1	121250101888019	WINDSHIELD BRACKET	1	
12	1	121250101888019	WINDSHIELD BRACKET	1	
11	1	121250101888019	WINDSHIELD BRACKET	1	
10	1	121250101888019	WINDSHIELD BRACKET	1	
9	1	121250101888019	WINDSHIELD BRACKET	1	
8	1	121250101888019	WINDSHIELD BRACKET	1	
7	1	121250101888019	WINDSHIELD BRACKET	1	
6	1	121250101888019	WINDSHIELD BRACKET	1	
5	1	121250101888019	WINDSHIELD BRACKET	1	
4	1	121250101888019	WINDSHIELD BRACKET	1	
3	1	121250101888019	WINDSHIELD BRACKET	1	
2	1	121250101888019	WINDSHIELD BRACKET	1	
1	1	121250101888019	WINDSHIELD BRACKET	1	

Factory partlist

Parts NO.	Description	QTY	Location
121000001214	DM428, WIRE BRACKET, SECC, T1.0	1	
141000001722	DN440, BOT COVER, SECC, TO. 6	1	
141000001494	DN440, TOP COVER, SECC, TO. 6	1	
141000001496	DN440, DECK BKT FRONT, SECC, T1.0	1	
141000001495	DN440, DECK BKT BACK, SECC, T1.0	1	
141000001493	DN440, RIGHT BKT, SECC, T1.0	1	
141000001492	DN440, LEFT BKT, SECC, T1.0	1	
141000001490	DN440, FRONT PANEL BKT, SECC, T1.0	1	
121100070063	SCREW, BM, BLUE ZINC, M5*6	4	
121105070012	SCREW, BTP, BLUE ZINC, M3*12	1	
121104070008	SCREW, BTS, BLUE ZINC, M2.6*8	8	
121106070007	SCREW, BTB, BLUE ZINC, M2.6*16	2	
121104070015	SCREW, BTS, BLUE ZINC, M2.6*4	4	
121104070007	SCREW, BTS, BLUE ZINC, M2.6*5	14	
121104070019	SCREW, BTS, BLUE ZINC, M3*8	1	
121040000222	SCREW, CM, BLACK ZINC, M2.6*5	2	
121045000040	SCREW, CM, BLACK ZINC, M2*3	2	
121050000003	CMV100, MOUNTING BOLT, STEEL, L48	1	
121410000026	CMV100, BOLT RUBBER CUSHION, RUBBER	1	
141010020178	DM428, MAIN HEATSINK, AL-ADC12, SANDED	1	
843DN4401SD020	DN4401 SD MI ASSM	1	
143825000186	WIRE, CM420, 1P, 26#, 90mm, GREEN	1	P901;
143805000497	SOCKET, 4P, 2.0mm, SMD, USB2.0	1	USB901;
123825000912	WIRE, 5PIN, 30#, 100mm, BLACK, 30V, DN428	1	CON902;
123820000350	FFC, 12P, 1.0mm, 70mm, TYPE B, 60V, DN428	1	
842DN4401SD020	DN4401 SD SMT ASSM	1	
143010001188	PCB, SD, DN4401, FR4, 1.2, 162*148, OSP, 9P	1	
141604000273	RES, 27k Ω , $\pm 5\%$, 1/16W, 0603	6	R904-909;
141803010104	CAP, 0.1uF, $\pm 10\%$, 25V, X7R, 0603	1	C901;
143805000281	SOCKET, 14P, SMD, TAI-SOL, CM403, SD	1	SD901;
143815000017	FFC SOCKET, 12P, 1.0mm, UPPER CONTACT	1	CON901;
123805000504	SOCKET, 7P, $\Phi 3.5$, ST-0222S00-075-162, PHO	1	J901;
843DN428MB144	DN428 MB MI ASSM	1	
121000000319	CM226, IC BRACKET, SECC, TO. 8, IC7386	1	
121090000043	CD120, ANTENNA JACK	1	ANT301;
141648000022	RCF, 2 Ω , $\pm 5\%$, 1W	2	R101 R107;
141670000109	THERMAL RES, GBX050, PTC (RILAIDA)	1	FR101;
141842030338	E. CAP, 3300uF, $\pm 20\%$, 13*26, 16V, 105 $^{\circ}$ C	1	C834;
122010000014	AXIS INDUCTOR, 560uH, $\pm 5\%$, 50mA, 0307	2	L351-352;
142015000036	CHOKE, 200uH, 1A, 24*30*11mm, $\pm 30\%$, FERRITE	1	L901;
142206000006	REC DIODE, 1N5401, 3A, 1V, 100V, DO-27, HY	1	D803;
142400000218	IC, LM2950-5V, TO-92, HTC	1	U103;
142400000592	IC, TDA7388, FLEXIWATT25, ST	1	U802;
123800000037	SOCKET, 5P, 2.0mm, 2.0T-1-5A, DIP180 $^{\circ}$	1	CON208;
143805000145	SOCKET, 6P, 2.0mm, DIP 180 $^{\circ}$	1	CON402;
124800000025	FUSE, ZH270, 15A, 32V, SLOW TYPE	1	
142820000043	TCXO, 32.768K, ± 20 ppm, -20+70 $^{\circ}$ C, 12.5pF, DIP	1	XT202;
143010001106	PCB, SPK, 428, FR4, 1.6, 208*146, HAL, 20P, A4B+	1	
143800000155	SOCKET, 16P, 6mm, 50V, DIP180 $^{\circ}$	1	
143805000470	SOCKET, 16P, 2.0mm, DIP90 $^{\circ}$	1	
842DN428MB124	DN428 MB SMT ASSM	1	
141604000000	RES, 0 Ω , $\pm 5\%$, 1/16W, 0603	8	R104 R227 R261 R203;R580 R575;R405 R406;
141604000101	RES, 100 Ω , $\pm 5\%$, 1/16W, 0603	20	R209 R234 R241 R361;R436;R576 R623-626;R825-826 R848-849;R909-910 R239 R235;R236 R237;

Factory partlist

Parts NO.	Description	QTY	Location
141803010105	CAP, 1uF, +80%-20%, 16V, Y5V, 0603	4	C352 C369 C831;C703;
141604000102	RES, 1k Ω , $\pm 5\%$, 1/16W, 0603	17	R240 R252;R352-355 R454-455;R508 R544 R614;R616 R619 R622 R905;R811-812;
141604000103	RES, 10k Ω , $\pm 5\%$, 1/16W, 0603	64	R109 R121-122 R129;R126 R201 R215;R220- 221 R242 R244;R249-250 R260 R435;R437 R439-440 R505;R509-510; R574;R602-603 R606 R613;R615 R617-618 R627;R620-621 R751-756;R758-759 R802-803;R816-817 R819 R821;R824 R828-829 R912;R834-840 R842- 843;R846-847 R268;R207 R212;
141604000104	RES, 100k Ω , $\pm 5\%$, 1/16W, 0603	10	R106 R120 R254-258;R501 R827 R911;
141604000105	RES, 1M Ω , $\pm 5\%$, 1/16W, 0603	1	R226;
141604000123	RES, 12k Ω , $\pm 5\%$, 1/16W, 0603	2	R130 R710;
141604000153	RES, 15k Ω , $\pm 5\%$, 1/16W, 0603	5	R364-365 R757 R761;R814;
141604000181	RES, 180 Ω , $\pm 5\%$, 1/16W, 0603	1	R238;
141604000222	RES, 2k2 Ω , $\pm 5\%$, 1/16W, 0603	2	R906 R913;
141604000223	RES, 22k Ω , $\pm 5\%$, 1/16W, 0603	3	R223 R702 R830;
141604000333	RES, 33k Ω , $\pm 5\%$, 1/16W, 0603	3	R205 R210;R705;
141604000392	RES, 3k9 Ω , $\pm 5\%$, 1/16W, 0603	2	R805-806;
141604000471	RES, 470 Ω , $\pm 5\%$, 1/16W, 0603	5	R253;R503-504 R511-512;
141604000472	RES, 4k7 Ω , $\pm 5\%$, 1/16W, 0603	12	R217 R231-233 R357;R502 R807-808 R813;R103 R128 R265;
141604000473	RES, 47k Ω , $\pm 5\%$, 1/16W, 0603	16	R102 R123 R127;R218-219 R251 R266;R577 R605 R607;R610-611 R815 R904;R907-908;
141604000474	RES, 470k Ω , $\pm 5\%$, 1/16W, 0603	6	R359-360 R818 R820;R822-823;
141604000512	RES, 5k1 Ω , $\pm 5\%$, 1/16W, 0603	6	R243 R708 R801;R804 R841 R844;
141604000562	RES, 5k6 Ω , $\pm 5\%$, 1/16W, 0603	4	R703 R704;R206 R211;
141604000752	RES, 7k5 Ω , $\pm 5\%$, 1/16W, 0603	6	R604 R608-609 R612;R706 R833;
141606000022	RES, 2R2 Ω , $\pm 5\%$, 1/10W, 0805	2	R356 R578;
141606000100	RES, 10 Ω , $\pm 5\%$, 1/10W, 0805	1	R810;
141606000101	RES, 100 Ω , $\pm 5\%$, 1/10W, 0805	5	R108 R351 R506;R601 R760;
141606000330	RES, 33 Ω , $\pm 5\%$, 1/10W, 0805	1	R358;
141606000331	RES, 330 Ω , $\pm 5\%$, 1/10W, 0805	1	R707;
141606000391	RES, 390 Ω , $\pm 5\%$, 1/10W, 0805	1	R490;
141606000750	RES, 75 Ω , $\pm 5\%$, 1/10W, 0805	9	R408-409 R412-414;R445-447 R453;
121606009022	RES, 0.22 Ω , $\pm 5\%$, 1/10W, 0805	1	R246;
141608000101	RES, 100 Ω , $\pm 5\%$, 1/8W, 1206	2	R132-133;
141608000102	RES, 1k Ω , $\pm 5\%$, 1/4W, 1206	1	R131;
141618000101	NET RES, 100 Ω *4, $\pm 5\%$, 1/16W, 0603	3	RP201-202 RP205;
141618000473	NET RES, 47k*4, $\pm 5\%$, 1/16W, 0603	1	RP203;
141668000012	V-RES, EZJZ1V800AA, 0603, 3pF, DC18V	4	D351 D401 D704-705;
141803000100	CAP, 10pF, $\pm 1\%$, 50V, NPO, 0603	1	C362;
141803000101	CAP, 100pF, $\pm 10\%$, 50V, NPO, 0603	4	C604 C615;C611-612;
141803000102	CAP, 1nF, $\pm 10\%$, 16V, X7R, 0603	4	C751 C755;C378-C379;
141803000103	CAP, 10nF, $\pm 10\%$, 50V, X7R, 0603	6	C353-355 C357;C363-364;
141803000104	CAP, 0.1uF, +80%-20%, 16V, Y5V, 0603	30	C102 C105-106 C108;C115;C201-202 C211 C213;C321 C356 C358-360;C365 C37 C408; C424 C502;C504;C539 C555;C602 C753 C814 C816;C837 C901-902 C904;
141803000120	CAP, 12pF, $\pm 5\%$, 50V, NPO, 0603	2	C206-207;
141803000123	CAP, 12nF, $\pm 20\%$, 50V, Y5V, 0603	1	C905;
141803000153	CAP, 15nF, $\pm 10\%$, 50V, X7R, 0603	2	C374-375;
141803000221	CAP, 220pF, $\pm 10\%$, 50V, NPO, 0603	6	C801-802 C807-808;C840-841;
141803000224	CAP, 0.22uF, +80%-20%, 50V, Y5V, 0603	2	C368 C370;
141803000225	CAP, 2.2uF, +80%-20%, 10V, Y5V, 0603	15	C376-377 C380-381;C351 C505-507;C605-608 C907;C805-806;

Factory partlist

Parts NO.	Description	QTY	Location
141803000330	CAP, 33pF, $\pm 5\%$, 50V, NPO, 0603	6	C208-209 C366-367;C372-373;
141803000332	CAP, 3. 3nF, $\pm 10\%$, 50V, X7R, 0603	2	C838-839;
141803000474	CAP, 0. 47uF, +80-20%, 25V, Y5V, 0603	2	C830 C833;
141803000682	CAP, 6. 8nF, $\pm 10\%$, 50V, X7R, 0603	1	C908;
141803000821	CAP, 820pF, $\pm 10\%$, 16V, X7R, 0603	4	C822 C824 C826 C828;
141806000104	CAP, 0. 1uF, $\pm 10\%$, 50V, X7R, 0805	1	C112;
141806000225	CAP, 2. 2uF, +80%-20%, 16V, Y5V, 0805	6	C409-411 C421-423;
141827000105	SMD E-CAP, 1uF, $\pm 20\%$, 4*5. 3, 50V, 105°C	1	C210;
141827000106	SMD E-CAP, 10uF, $\pm 20\%$, 4*5. 3, 16V, 105°C	6	C101 C701-702 C705;C813 C829;
141827000107	SMD E-CAP, 100uF, $\pm 20\%$, 6. 3*5. 5, 16V, 105°C	13	C103 C109 C113; C361 C415; C601; C603 C752;C754 C815 C844 C906;C909;
141827000108	SMD E-CAP, 1000uF, $\pm 20\%$, 10*10. 5, 16V, 105°C	1	C107;
141827000225	SMD E-CAP, 2. 2uF, $\pm 20\%$, 4*5. 3, 50V, 105°C	20	C110-111 C823;C609-610 C613-614;C817-821 C825 C827;C803-804 C809-810;C835-836;
141827000226	SMD E-CAP, 22uF, $\pm 20\%$, 4*5. 3, 16V, 105°C	2	C811-812;
141827000227	SMD E-CAP, 220uF, $\pm 20\%$, 6. 3*5. 5, 6. 3V, 105°C	6	C114 C501;C412-414;C503;
141827000476	SMD E-CAP, 47uF, $\pm 20\%$, 6. 3*5. 5, 16V, 105°C	1	C832;
142000000028	INDUCTOR, 10uH, 0805	2	L107 L353;
142000000095	POWER INDUCTOR, 100uH, CD75	2	L101 L501;
122000000152	POWER INDUCTOR, 47uH, CD43	2	L102 L402;
142000000207	POWER INDUCTOR, 10uH, $\pm 20\%$, 1. 5A, CD43	3	L103-105;
122000000267	POWER INDUCTOR, 100uH, $\pm 20\%$, 1. 7A, CDH127	1	L106;
122000000296	INDUCTOR, 150nH, $\pm 5\%$, 300mA, 0805, HF	1	L356;
122000000298	INDUCTOR, 390nH, $\pm 5\%$, 300mA, 0805, HF	1	L354;
122000000300	INDUCTOR, 3. 3uH, $\pm 5\%$, 50mA, 0805, F COIL	1	L355;
142040000011	CHIP BEAD, 0603, 800mA, 100MHz, 0. 6 Ω	1	FB401;
142200000019	SW DIODE, TLL4148, 1/2W, 500mA, LL-34 KEL	13	D105-106 D201 D208;D404-405 D213 D104; D801-802;D901-902;D207;
142206000003	REC DIODE, 1N4001, 1A, 1V, 50V, 1210	3	D103 D702-703;
142224000025	ZENER DIODE, 6V8, 1/2W, 1206, $\pm 5\%$	2	ZD101 ZD405;
142233000004	SCHOTTKY DIODE, RB063L-30, SOD-106	2	D101-102;
142245000017	TR, KRA102S (PNP), SOT-23	3	Q201 Q204 Q801;
142245000018	TR, KRC102 (NPN), SOT-23	2	Q101 Q502;
142245000021	TR, KRC231S (NPN), SOT-23	5	Q601-604 Q901;
142245000024	TR, KTC8550S (PNP), SOT-23, KEC	1	Q106;
142245000048	TR, MMBT3906LT1 (PNP), SOT-23, KEC	4	Q702 Q802 Q902 Q212;
142251000001	TR, 2N3904 (NPN), SOT-23	11	Q103-104 Q107 Q205;Q202-203 Q207 Q210;Q401 Q701;Q803;
142266000004	MOSFET, A03401, SOT-23	3	Q102 Q213 Q501;
142290000004	ESD DIODE, PG05GBUSV, 200W, 24A, 5G	1	ZD401;
142400000131	IC, CD4066, SO-14, TI	1	U501;
142400000384	IC, TDA7419TR, SO28, ST	1	U801;
122400000395	IC, TL431A, SOT-23	1	ZD701;
142400000416	IC, UTC4558, SOP-8, UTC	4	U601-602 U751;U901;
142400000675	IC, OCP2576, TO263-5L, DRIENT-CHIP	1	U102;
142400000697	IC, UTC78M06, TO-252, UTC	1	U701;
142400000832	IC, TEF6606T/V2, S032, PHILIPS	1	U352;
122400000867	IC, 78D09AL, TO-252, UTC, 1A	1	U101;
142410000424	IC, UPD78F0547, LQFP-12*12, NEC	1	U201;
142410000405	IC, FMS6502, TSSOP24, FAIRCHILD	1	U401;
142490000013	IC, FST3257MTCXNL, TSSOP16, FAIRCHILD	2	U531-532;
143010040929	PCB, MB, DN428, FR4, 1. 6, 194*141, OSP, 1P	1	
123815000093	FFC SOCKET, 50P, 0. 5mm, DOWN CONTACT, HC	1	CON207;
123815000192	FFC, 21P, 1. 0mm, SMD, 90° UP	1	CON202;

Factory partlist

Parts NO.	Description	QTY	Location
123815000194	FPC SOCKET, 12P, 1.0mm, SMD, DIP90°, UP	2	CON501-502;
141806010106	CAP, 10uF, ±10%, 6.3V, X5R, 0805	4	C842-843 C845-846;
142400000017	IC, 74HC4052D, PHILIPS	1	U803;
142400000635	IC, AT24C02BN-10SU-1.8, SOP8, ATMEL	1	U351;
142825000053	TCXO, 8.00M, ±15ppm, -30+90°C, 20pF, SMD	1	XT201;
142825000091	TCXO, 4.000M, ±30ppm, -40+85°C, 20pF, SMD	1	XT351;
141604000182	RES, 1k8Ω, ±5%, 1/16W, 0603	2	R362 R363;
141604000273	RES, 27kΩ, ±5%, 1/16W, 0603	1	R701;
141812050226	CAP, 22uF, +80%-20%, 25V, Y5V, 2.2mm, 1210	1	C104;
141604000750	RES, 75Ω, ±5%, 1/16W, 0603	3	R224-225;R507;
121490000380	DN428, HEAT SILICA GEL, EVA, 35*24*0.8	1	TV TUNER(TV101);
121002000113	DN428, SHIELD COVER, SPTE, T0.4	1	
842DN428TV071	DN428 TV SMT ASSM	1	
143010011064	PCB, TV, DN428, FR4, 1.6, 183*148, OSP, 12P	1	
141604000473	RES, 47kΩ, ±5%, 1/16W, 0603	2	R101 R102;
141803000104	CAP, 0.1uF, +80%-20%, 16V, Y5V, 0603	1	C101;
144815010113	TUNER, TDV001AD, TV	1	TV101;
123805000642	SOCKET, 4P, 3.5mm, H-Φ3.5SMT-04, EARPHONE	1	J101;
141839000107	E. CAP, 100uF, ±20%, 6.3*12, 25V, 105°C, HRC	1	C104;
141604000103	RES, 10kΩ, ±5%, 1/16W, 0603	1	C543;
843DVU722ESB232	DVU722E SB MI ASSM	1	
121104050023	SCREW, PWTS, BLUE ZINC, M2*5	3	
141827050227	E. CAP, 220uF, ±20%, 6.3*7, 10V, -55°C--105°C	1	EC46;
141830000226	E. CAP, 22uF, ±20%, 4*5, 16V, 105°C	2	EC10 EC23;
141830020106	E. CAP, 10uF, ±20%, 4*5, 16V, 105°C	4	EC2 EC3 EC7 EC8;
141830020107	E. CAP, 100uF, ±20%, 6.3*5, 16V, 105°C	14	EC1 EC4 EC6 EC32;EC36 EC37 EC40 EC41;EC42 EC43 EC44 EC53;EC45 EC22;
141830040476	E. CAP, 47uF, ±20%, 5*5, 16V, 105°C	3	EC38 EC27 EC5;
142206000004	REC DIODE, 1N4001, 1A, 1V, 50V, DO-41	1	D7;
123820000351	FFC, 12P, 1.0mm, 170mm, TYPE A, 60V, DN428	1	
143820000261	FFC, 21P, 1.0mm, 120mm, TYPE A, 60V, B1=5mm	1	
144840000057	DECK, DL-30HM, FORYOU MULTIMEDIA	1	
127070010965	CMV100, LASER WARNING LABEL	1	
142400000040	IC, 78L05, TO-92, CJ	1	U8;
142820000010	TCXO, 27.000M, ±20ppm, -30+80°C, 18pF, DIP	1	XT1;
143210000004	END-SENSE SW, SW111	1	K1;
143405000004	INFRARED RECEIVER, IR928-6C	2	D12 D13;
123825000705	WIRE HARNES, DN421, 6P, 130mm, 26#	1	CN9;
842DVU722ESB192	DVU722E SB SMT ASSM	1	
142040000011	CHIP BEAD, 0603, 800mA, 100MHz, 0.6Ω	9	L18 L19 L22 L26;L29 L16 L10 L9 L13;
142040000018	CHIP BEAD, 0603, PZ1608U121-1R0T(F), 120Ω	2	L1 L4;
142040000042	CHIP BEAD, 0805 200mA, 100MHz, 1.2Ω	4	L5 L6 L27 L36;
142040000061	CHIP BEAD, L2*W1.25*T1.25*A, 3A, 100MHz, 17Ω	3	L20 L28 L38;
123800000018	FPC SOCKET, 24P, 0.5mm, SMT, TOP	1	CN12;
141604000000	RES, 0Ω, ±5%, 1/16W, 0603	14	R1 R3 R89 R100;R103 R104 R39 L15;L17 L21 L23 L8;L11 L14;
141604000010	RES, 1Ω, ±5%, 1/16W, 0603	1	R32;
141604000022	RES, 2.2Ω, ±5%, 1/16W, 0603	2	R140 L30;
141606000047	RES, 4Ω7, ±5%, 1/10W, 0805	2	R87 R97;
141604000100	RES, 10Ω, ±5%, 1/16W, 0603	1	R175;
141604000101	RES, 100Ω, ±5%, 1/16W, 0603	5	R242 R243 R163 R41;R6;
141604000103	RES, 10kΩ, ±5%, 1/16W, 0603	8	R11 BC51 BC11 R17;R20 R244 R38 R9;
141604000152	RES, 1k5Ω, ±5%, 1/16W, 0603	1	R114;
141604000153	RES, 15kΩ, ±5%, 1/16W, 0603	4	R71 R72 R10 R23;
141604000154	RES, 150kΩ, ±5%, 1/16W, 0603	2	R22 R34;

Factory partlist

Parts NO.	Description	QTY	Location
141604000203	RES, 20k Ω , $\pm 5\%$, 1/16W, 0603	1	R118;
141604000223	RES, 22k Ω , $\pm 5\%$, 1/16W, 0603	1	R135;
141604000330	RES, 33 Ω , $\pm 5\%$, 1/16W, 0603	1	R105;
141604000332	RES, 3k3 Ω , $\pm 5\%$, 1/16W, 0603	4	R13 R26 R128 R131;
141604000333	RES, 33k Ω , $\pm 5\%$, 1/16W, 0603	1	R124;
141604000391	RES, 390 Ω , $\pm 5\%$, 1/16W, 0603	1	R113;
141604000393	RES, 39k Ω , $\pm 5\%$, 1/16W, 0603	3	R92 R93 R94;
141604000433	RES, 43k Ω , $\pm 5\%$, 1/16W, 0603	2	R126 R127;
141604000473	RES, 47k Ω , $\pm 5\%$, 1/16W, 0603	1	R7;
141604000474	RES, 470k Ω , $\pm 5\%$, 1/16W, 0603	3	R33 R125 R35;
141604000512	RES, 5k1 Ω , $\pm 5\%$, 1/16W, 0603	2	R115 R116;
141604000560	RES, 56 Ω , $\pm 5\%$, 1/16W, 0603	2	R69 R70;
141604000562	RES, 5k6 Ω , $\pm 5\%$, 1/16W, 0603	3	R12 R25 R129;
141604000750	RES, 75 Ω , $\pm 5\%$, 1/16W, 0603	1	R2;
141604010102	RES, 1k Ω , $\pm 1\%$, 1/16W, 0603	4	R19 R24 R247 R4;
141604010122	RES, 1k2 Ω , $\pm 1\%$, 1/16W, 0603	1	R122;
141606000330	RES, 33 Ω , $\pm 5\%$, 1/10W, 0805	1	R160;
141606000750	RES, 75 Ω , $\pm 5\%$, 1/10W, 0805	1	R21;
141618000473	NET RES, 47k*4, $\pm 5\%$, 1/16W, 0603	1	RN1;
141803000100	CAP, 10pF, $\pm 1\%$, 50V, NPO, 0603	2	C1 C42;
141803000101	CAP, 100pF, $\pm 10\%$, 50V, NPO, 0603	3	C4 C5 C53;
141803000102	CAP, 1nF, $\pm 10\%$, 16V, X7R, 0603	9	BC10 BC43 BC45 C72;C74 C75 C17 C20 BC14;
141803000103	CAP, 10nF, $\pm 10\%$, 50V, X7R, 0603	6	C54 BC44 BC18 BC15;C67 C68;
141803000104	CAP, 0. 1uF, +80%-20%, 16V, Y5V, 0603	55	BC1 BC2 BC3 BC4;BC5 BC16 BC17 BC19;BC20 BC21 BC6 BC9;BC24 BC28 BC29 BC30;BC34 BC33 BC38 BC35;BC36 BC37 BC40 BC41;BC42 BC46 BC48 BC50;BC53 BC54 BC56 BC57;BC58 BC60 BC61 BC63;BC64 BC66 BC69 BC7;BC8 BC13 BC52 BC70;BC74 BC75 BC76 BC77;C43 C45 C48 C57;C76 C77 C59;
141803000152	CAP, 1. 5nF, $\pm 10\%$, 50V, X7R, 0603	2	C6 C9;
141803000225	CAP, 2. 2uF, +80%-20%, 10V, Y5V, 0603	1	BC22;
141803000270	CAP, 27pF, $\pm 5\%$, 16V, NPO, 0603	2	C79 C80;
141803000330	CAP, 33pF, $\pm 5\%$, 50V, NPO, 0603	3	BC47 BC49 R112;
141803000470	CAP, 47pF, $\pm 5\%$, 16V, NPO, 0603	2	C47 C49;
141803000472	CAP, 4. 7nF, $\pm 10\%$, 50V, X7R, 0603	2	C2 C3;
141803000473	CAP, 47nF, $\pm 10\%$, 50V, X7R, 0603	1	C69;
141803000681	CAP, 680pF, $\pm 10\%$, 16V, X7R, 0603	5	C62 C63 C64 C65 C52;
141803000683	CAP, 68nF, $\pm 10\%$, 50V, X7R, 0603	1	C51;
141803000821	CAP, 820pF, $\pm 10\%$, 16V, X7R, 0603	1	C71;
141803010221	CAP, 220pF, $\pm 5\%$, 25V, NPO, 0603	2	C15 C18;
141803010224	CAP, 0. 22uF, $\pm 10\%$, 25V, X5R, 0603	1	C66;
141803010272	CAP, 2. 7nF, $\pm 10\%$, 50V, X7R, 0603	2	C16 C19;
141803010301	CAP, 300pF, $\pm 5\%$, 50V, NPO, 0603	1	C70;
141803010331	CAP, 330pF, $\pm 5\%$, 16V, NPO, 0603	1	C73;
141803040105	CAP, 1uF, $\pm 10\%$, 25V, X5R, 0603	4	C46 C58 C60 C61;
121845090107	TAN. CAP, 100uF, 6. 3V, $\pm 20\%$, C, AVX	6	EC26 EC24 EC25 EC29;EC30 EC39;
142000000179	INDUCTOR, 1. 8uH, $\pm 10\%$, 50mA, 0805	1	L2;
142040000060	CHIP BEAD, 1206 10uH, 100MHz, 0. 1 Ω	1	L3;
142200000019	SW DIODE, TCLL4148, 1/2W, 500mA, LL-34 KEL	6	D9 D10 D2 D3 D4 D6;
142224000023	ZENER DIODE, 5V6, 1/2W, MINI MELF	1	D11;
142236000005	DUAL DIODE, BAV99, SOT-23, CJ	1	D1;
142245000015	TR, DTC343TK, SOT-23	1	Q14;
142245000048	TR, MMBT3906LT1 (PNP), SOT-23, KEC	1	Q32;

Factory partlist

Parts NO.	Description	QTY	Location
142251000001	TR, 2N3904 (NPN), SOT-23	1	Q33;
142251000005	TR, 2SB1132, SOT-89	2	Q11 Q13;
142266000004	MOSFET, A03401, SOT-23	1	Q2;
142290000005	TR, 9015, SOT23, CJ	1	Q6;
142400000066	IC, AMS1117-1.8V, SOT-223, AMS	1	U14;
142400000068	IC, AMS1117-3V3, SOT-223, AMS	1	U11;
142400000108	IC, BA6287F, SOP-8, ROMH	1	U3;
142400000179	IC, IS42S16400-7T, TSOP11-54, ISSI	1	U5;
142400000416	IC, UTC4558, SOP-8, UTC	1	U1;
142410000002	IC, AT24C08AN-10SU, SOP8	1	U6;
142410000024	IC, AM5668S, HSOP28, AMTEK	1	U4;
142410000108	IC, SPHE8202D-HL171, LQFP216L, SUNPLUS	1	U2;
142410000147	IC, KH29LV160CBTC-70, TSOP-48, HY, 16M, 8BIT	1	U7;
143010020486	PCB, SB, DVU722E, FR4, 1.2, 107*109, OSP, 2P	1	
143800000109	FPC SOCKET, 21P, 1.0mm, SMD, UP	1	CN7;
143815000017	FPC SOCKET, 12P, 1.0mm, UPPER CONTACT	1	CN2;
141604000472	RES, 4k7 Ω , $\pm 5\%$, 1/16W, 0603	14	R130 R134 R246 R249;R14 R27 R36 R37;R5 L12 L24 R101~R102;R40;
845VM9511FRM420	DN440 REMOTE PET PET	1	
121090000223	DV-711, FRONT REM BAT SHEET-, C1519	1	-;
121090000224	DV-711, FRONT REM BAT SHEET+, C1519	1	+;
141210000646278	DM4401N259A, FRONT REMOTE COVER, ABS, BLK	1	
141210000647000	DV711, REMOTE BOTTOM COVER, ABS	1	
141210000649000	DV711, FRONT REMOTE BATTERY COVER, ABS	1	
141240020404000	DV711, FRONT REM PCB BRACKET, ABS	1	
121465000381	DMB7232, REMOTE PET, PET, ,	1	
121490000348	DMB7232, RUBBER KEY, RUBBER	1	
141830030476	E. CAP, 47uF, $\pm 20\%$, 4*5, 10V, 85°C	1	C3;
122890000001	TCXO, 455K, \pm KHz, -20+80°C, DIP, OSC	1	Y1;
143010000636	PCB, REM, DV711JS, FR4, 1.0, 128*36, OSP, 1P	1	
124810000003	BATTERY, CMV100, CR2025, 3.0V	1	
127060000020	CMV100, POLY BAG RIM, PE	1	
127060000027	CMV100, POLY BAG REMOTE CELL, PE	1	
127070000218	CAD415, PASS LABEL, REM	1	
141606000022	RES, 2R2 Ω , $\pm 5\%$, 1/10W, 0805	1	R1;
141806010101	CAP, 100pF, $\pm 5\%$, 50V, NPO, 0805	2	C1 C2;
142245000028	TR, S8050 (NPN), SOT-23	1	Q1;
142400000335	IC, SC6122, SOP24, SL, INFRARED	1	IC1;
143405000006	INFRARED TRANSMITTER, IR204-A	1	D1;
143020030009	FPC, DV610, 1.0, 1.0, MB-VD, 50PIN, 0.5mm, E	1	
123830000755	I/O, DN440, 25P, V/SUB/L4/AUX, SWC, CH, 50V	1	
143830000198	I/O, DV610, AV CABLE, SPK OUT	1	
123830000740	I/O, DM428, 8P, POWER, T, 50V (ACC A7)	1	
127020001634	DM4401N259A, GIFT BOX, 300*288*210, SIERRA	1	
127000001448	DM4401N259A, CARTON, K=A, 588*315*233, SIERRA	500	
141270300169018	DN440, RIM, ABS, GEN+BLK	1	
1270600000037	DV-610, POLY BAG, 300*400*0.1	1	
1270600000019	CMV100, POLY BAG MANUAL, PE	2	
1270600000020	CMV100, POLY BAG RIM, PE	1	
1270600000021	CMV100, POLY BAG SCREW, PE	1	
1270700005065	DM4401N259A, MODEL LABEL, SIERRA	1	
127075001998	DM4401N259A, MANUAL, SIERRA	1	
143830000814	I/O, DN440, 23P, V/SUB/L4/AUX, CH, 50V	1	
843DM4401NKB000	DM4401N KB MI ASSM	1	
121490000376	DN440, PURON FOR TFT LR, PURON, TO. 4, 80*2.2	4	
121490000377	DN440, PURON FOR TFT U, PURON, TO. 4, 150*1.2	2	
121490000378	DN440, PURON FOR TFT D, PURON, TO. 4, 150*2.2	2	

Factory partlist

Parts NO.	Description	QTY	Location
121490000155	DV-6300, MIC COAT, RUBBER	1	MIC;
121040000185	SCREW, PTP, BLACK ZINC, M2*5	2	
144830000057	DN428, BLUETOOTH MODEL, SUN-MBA36	1	U9;
141658000106	ENCODER, EC110201M2D-HA1-007, H18. 5, BA	1	EN1;
143490000026	INFRARED RECEIVER, FM-3038TM2-5AN	1	RM101;
123650000008	MIC, FA4530L30DDCC, -38±2dB, 2P, DN440	1	MIC;
143420000051	TFT/A, PW062XS8, 6. 2!, PRIME VIEW	1	
143420000052	TOUCH SCREEN, KDT-460, 6. 2", 154*87*1. 45	1	
121450000105	DN440, DUSTPROOF CLOTH, PVC+CLOTH	1	
121460000294	DN440, INSULATOR TFT, PC, TO. 5	1	
141290001077000	DN440, LENS DISC GATE, PC	1	
121410000025	CMV100, REMOTE MAT, EVA, 7*6*4	1	
121405000002	CM206, REMOTE MAT, EVA, 7*6*2	1	
121445000039	CM700, DOUBLE TAPE MIDDLE, 3M	3	
842DN4401TFT020	DN4401 TFT SMT ASSM	1	
122000000098	POWER INDUCTOR, 100uH, CDH6B38	3	L19 L21-22;
122000000315	POWER INDUCTOR, 100uH, ±10%, 300mA, CDH4B28	2	L12 L20;
143805000214	SOCKET, 2P, SM02B-BHSS-1-TB, PWR	1	CN4;
141604000000	RES, 0 Ω, ±5%, 1/16W, 0603	1	R30;
141604000101	RES, 100 Ω, ±5%, 1/16W, 0603	2	R27-28;
141604000102	RES, 1k Ω, ±5%, 1/16W, 0603	3	R8 R41 R37;
141604000103	RES, 10k Ω, ±5%, 1/16W, 0603	3	R53-54 R62;
141604000104	RES, 100k Ω, ±5%, 1/16W, 0603	2	R29 R61;
141604000105	RES, 1M Ω, ±5%, 1/16W, 0603	1	R4;
141604000472	RES, 4k7 Ω, ±5%, 1/16W, 0603	1	R17;
141604000130	RES, 13 Ω, ±5%, 1/16W, 0603	3	R10 R14 R19;
141604000151	RES, 150 Ω, ±5%, 1/16W, 0603	1	R33;
141604000152	RES, 1k5 Ω, ±5%, 1/16W, 0603	1	R46;
141604000201	RES, 200 Ω, ±5%, 1/16W, 0603	1	R58;
141604000220	RES, 22 Ω, ±5%, 1/16W, 0603	2	R38 R45;
141604000221	RES, 220 Ω, ±5%, 1/16W, 0603	1	R101;
141604000223	RES, 22k Ω, ±5%, 1/16W, 0603	1	R42;
141604000274	RES, 270k Ω, ±5%, 1/16W, 0603	1	R39;
141604000303	RES, 30k Ω, ±5%, 1/16W, 0603	1	R49;
141604000304	RES, 300k Ω, ±5%, 1/16W, 0603	1	R26;
141604000330	RES, 33 Ω, ±5%, 1/16W, 0603	5	R7 R22 R25 R36 R43;
141604000331	RES, 330 Ω, ±5%, 1/16W, 0603	1	R102;
141604000332	RES, 3k3 Ω, ±5%, 1/16W, 0603	1	R60;
141604000471	RES, 470 Ω, ±5%, 1/16W, 0603	1	R103;
141606000471	RES, 470 Ω, ±5%, 1/10W, 0805	3	R109-111;
141604000472	RES, 4k7 Ω, ±5%, 1/16W, 0603	6	R6 R40 R47 R55 R57;R89;
141604000124	RES, 120k Ω, ±5%, 1/16W, 0603	1	R16;
141604000473	RES, 47k Ω, ±5%, 1/16W, 0603	4	R24 R32 R52 R88;
141604000474	RES, 470k Ω, ±5%, 1/16W, 0603	1	R50;
141604000511	RES, 510 Ω, ±5%, 1/16W, 0603	1	R35;
141604000123	RES, 12k Ω, ±5%, 1/16W, 0603	1	R44;
141604000513	RES, 51k Ω, ±5%, 1/16W, 0603	1	R51;
141604000620	RES, 62 Ω, ±5%, 1/16W, 0603	6	R9 R11 R13 R15;R20-21;
141604000681	RES, 680 Ω, ±5%, 1/16W, 0603	1	R104;
141604000682	RES, 6. 8k Ω, ±5%, 1/16W, 0603	1	R48;
141604000750	RES, 75 Ω, ±5%, 1/16W, 0603	2	R85-86;
141604000000	RES, 0 Ω, ±5%, 1/16W, 0603	8	FB3 FB10 R92-93;R23 R12 R18 R120;
141604000100	RES, 10 Ω, ±5%, 1/16W, 0603	4	R1-3 R108;
141618000330	NET RES, 33 Ω*4, ±5%, 1/16W, 0603	4	RP2-5;
141803000101	CAP, 100pF, ±10%, 50V, NP0, 0603	6	C3-5 C26 C30 C37;

Factory partlist

Parts NO.	Description	QTY	Location
141803000104	CAP, 0. 1uF, +80%-20%, 16V, Y5V, 0603	55	C7-9 C11-13 C19-22;C27 C29 C31-33 C35;C36 C39 C41-42 C44;C49 C51 C54 C57- 58;C60-61 C63 C65 C67;C68-69 C72 C76- 82;C84-85 C87 C91-93;C96-97 C101 C103;C107-108 C113 C38;
141803000200	CAP, 20pF, $\pm 1\%$, 25V, NPO, 0603	3	C1 C6 C119;
141803000470	CAP, 47pF, $\pm 5\%$, 16V, NPO, 0603	1	C15;
141803010102	CAP, 1nF, $\pm 5\%$, 16V, NPO, 0603	5	C40 C43 C70 C74 C83;
141803040105	CAP, 1uF, $\pm 10\%$, 25V, X5R, 0603	3	C16 C45 C56;
141803000225	CAP, 2. 2uF, +80%-20%, 10V, Y5V, 0603	2	C23 C24;
141812000106	CAP, 10uF, +80%-20%, 25V, Y5V, 1210	5	C66 C71 C73 C75 C90;
141827000107	SMD E-CAP, 100uF, $\pm 20\%$, 6. 3*5. 5, 16V, 105°C	5	C86 C89 C94-95 C105;
141827000227	SMD E-CAP, 220uF, $\pm 20\%$, 6. 3*5. 5, 6. 3V, 105°C	8	C10 C25 C106 C109;C110 C114-116;
141845040106	TAN. CAP, 10uF, 16V, $\pm 20\%$, A	14	C2 C28 C34 C46-48;C50 C52-53 C55;C62 C64 C100 C111;
142000000050	INDUCTOR, 2. 2uH, $\pm 10\%$, 1A, 0805	1	L24;
142000000169	INDUCTOR, 10uH, $\pm 10\%$, 25mA, 0805, F COIL	15	L1-2 L4-11 L13-16;L18;
142040000082	CHIP BEAD, 0603, 600 Ω , CBY0603U601MT	2	FB1-2;
142206000011	REC DIODE, LL6263, 2A, 1V, 70V, SOD-80	1	D3;
142236000005	DUAL DIODE, BAV99, SOT-23, CJ	7	D1-2 D4-8;
142266000004	MOSFET, A03401, SOT-23	1	Q1;
142266000006	MOSFET, 1RLML6402, SOT-23	1	Q2;
142290000004	ESD DIODE, PG05GBUSV, 200W, 24A, 5G	1	U8;
142400000282	IC, NJM3414AM, SOP-8, JRC	1	U4;
142400000307	IC, RT9161-33CV, SOT-23, RICHTEK	1	U2;
142400000605	IC, TSC2046IPWR, TSSOP16, TI	1	U7;
142400000635	IC, AT24C02BN-10SU-1. 8, SOP8, ATMEL	1	U10;
142410000480	IC, MST720C-T-CF, TQFP-100, MST	1	U1;
142820000004	TCXO, 12. 00M, ± 10 ppm, -20+70°C, 20pF, SMD	1	Y1;
143815000055	FFC SOCKET, 26P, 0. 5mm, DOWN CONTACT	1	CN3;
123815000093	FFC SOCKET, 50P, 0. 5mm, DOWN CONTACT, HC	1	CN1;
123815000142	FFC SOCKET, 8P, 0. 5mm, DOWN CONTACT	1	CN6;
142410000334	IC, 25VF010A-33-4C-SAE, SOP-8, SST	1	U3;
142410000491	IC, AMC3202, SOP8, ADDMTEK, LED BACKLIGHT	1	U5;
141803000103	CAP, 10nF, $\pm 10\%$, 50V, X7R, 0603	2	C18 C59;
141812000475	CAP, 4. 7uF, +80%-20%, 50V, Y5V, 1210	1	C88;
141803010201	CAP, 200pF, $\pm 5\%$, 25V, NPO, 0603	1	C98;
141803000471	CAP, 470pF, $\pm 10\%$, 50V, X7R, 0603	1	C17;
142200000019	SW DIODE, TCLL4148, 1/2W, 500mA, LL-34 KEL	1	D9;
143405010069	LED, RED, FC-1608SXX-620H08, 0603, 10mA	8	D101-107;D108;
122233000012	SCHOTTKY DIODE, SS16, DO-214AC	1	D12;
141614000047	RES, 4. 7 Ω , $\pm 5\%$, 1/2W, 2010	1	R67;
142224000073	ZENER DIODE, 12V, 1/2W, MINI MELF	1	D10;
142000000361	POWER INDUCTOR, 22uH, $\pm 20\%$, 700mA, CDH4B28	2	L3 L17;
123210000072	TACT SW, 4. 3mm, WT1101EW1-43F-02, 250gf, SMD	5	SW101-105;
143010001189	PCB, TFT, DN4401, FR4, 1. 2, 193*196, OSP, 2P	1	
141604010104	RES, 100k Ω , $\pm 1\%$, 1/16W, 0603	1	R56;
141614019056	RES, 5. 6 Ω , $\pm 5\%$, 1/2W, 2010	1	R59;
143805000040	SOCKET, 2P, 1. 25mm, HORIZONTAL	1	CN9;
141606000681	RES, 680 Ω , $\pm 5\%$, 1/10W, 0805	1	R112;
121606009022	RES, 0. 22 Ω , $\pm 5\%$, 1/10W, 0805	1	L25;
141230301879018	DN4401, PWR BUTTON, PC, GEN+BLK	1	
141230301882028	DM4401N, DIM BUTTON, PC, GEN+BLK	1	
141230301883018	DN4401, SRC BUTTON, PC, GEN+BLK	1	
141230301880018	DN4401, EJECT BUTTON, PC, GEN+BLK	1	

Factory partlist

Parts NO.	Description	QTY	Location
141230301881018	DN4401, RESET BUTTON, PC, GEN+BLK	1	
141220000241039	DM727, REM LENS, PMMA, HENNA	1	
141270500193017	DN4401, BUT RING, ABS, PLT+SIL	2	
141230301884018	DN4401, VOL KNOB, ABS, GEN+BLK	1	
141270500192017	DN4401, VOL RING, ABS, PLT+SIL	1	
141260000274010	DN4401, VOL LI-GUIDE, PC, GEN/WHT	1	
141260000275000	DN4401, CDM LI-GUIDE-L, PC	1	
141260000293000	DN4401, CDM LI-GUIDE-R, PC	1	
141240300679018	DN4401, SD BKT, ABS, GEN+BLK	1	
141210310913028	DM4401N259A, FRONT PANEL, PC+ABS, GEN+BLK	1	
127070004253	DMB42858A, TV ANT LABEL	1	
1270150000076	DN440, PULP FOAM, YELLOW PULP, 280*190*75	2	
1270600000023	CMV100, POLY BAG SIDE LOCK, PE	1	
1238300000711	I/O, DN-6320, 3P, SW	1	
1248450000020	ANT, DV-721ALM, XY-AV003-5, TV	1	
1270700000731	CM700, BATTERY+ WIREING LABEL	1	
1270700000735	CM700, GROUND WIREING LABEL	1	
1270700000729	CM700, ACC+ WIREING LABEL	1	
1270700000730	CM700, AMP/ANT/REMOTE WIREING LABEL	1	
1270700000478	CM120, FORYOUONT LEFT+ WIRING LABEL, ENG	1	
1270700000479	CM120, FORYOUONT LEFT- WIRING LABEL, ENG	1	
1270700000480	CM120, FORYOUONT RIGHT+ WIRING LABEL, ENG	1	
1270700000481	CM120, FORYOUONT RIGHT- WIRING LABEL, ENG	1	
1270700000484	CM120, REAR LEFT+ WIRING LABEL, ENG	1	
1270700000485	CM120, REAR LEFT- WIRING LABEL, ENG	1	
1270700000486	CM120, REAR RIGHT+ WIRING LABEL, ENG	1	
1270700000487	CM120, REAR RIGHT- WIRING LABEL, ENG	1	
1270700000493	CM120, TELEMUTE LABEL, ENG	1	
1270700000427	CM110, QC PASS LABEL	1	
1270700000984	CMV100, WARRANTY LABEL, ENG	1	
1270700000202	CAD310, SCREW LABEL, PHILIPS	1	
127070003207	CM121259A, SN LABEL	4	
127070004551	CM120R300A, ANTI-COUNTERFEITING LABEL	1	
127005000124	DM428, WHITE BOX, W9B, 280*35*200	1	