

Car Power Amplifier

Service

Service

Service

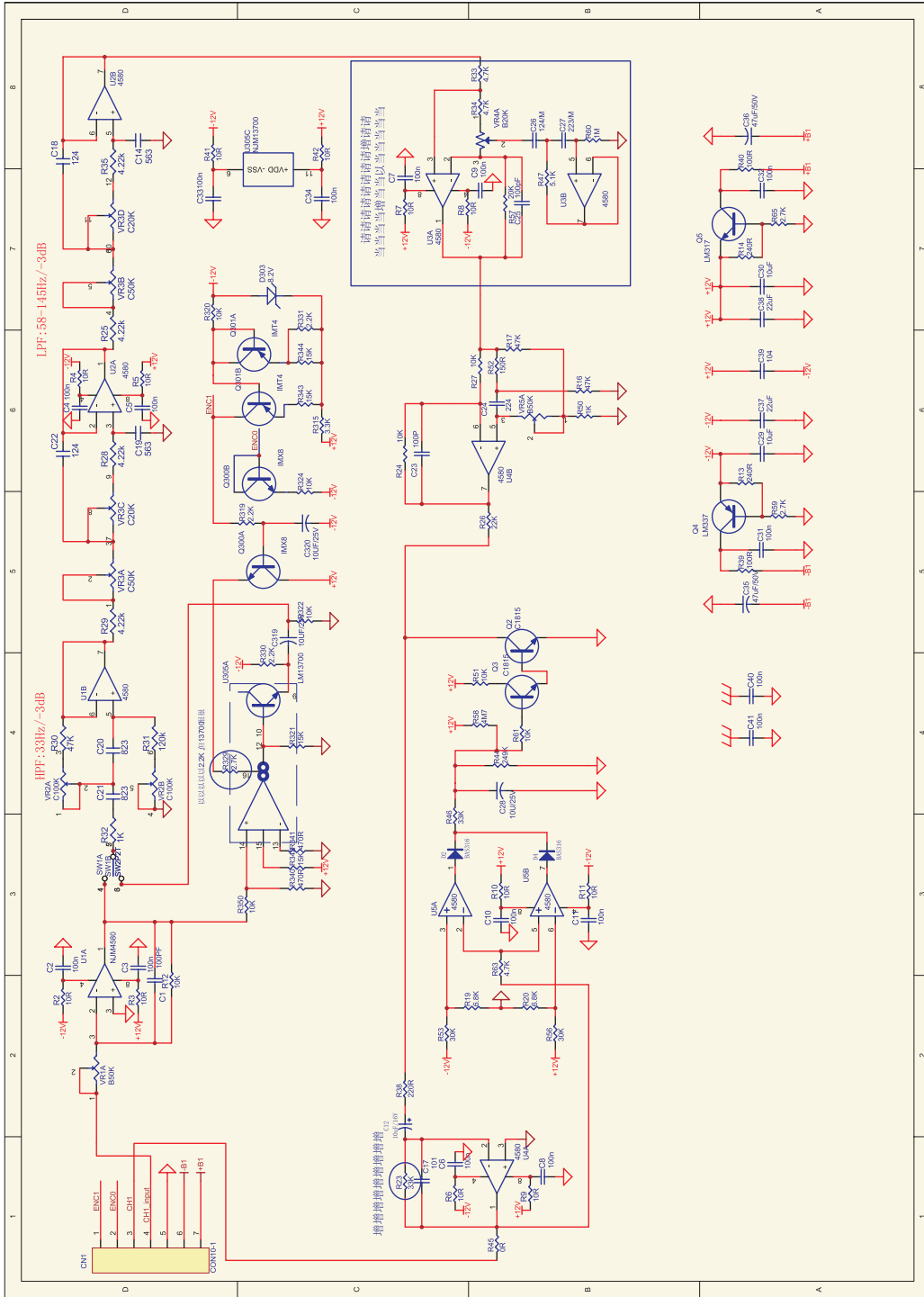
NGTD-1

Service Manual

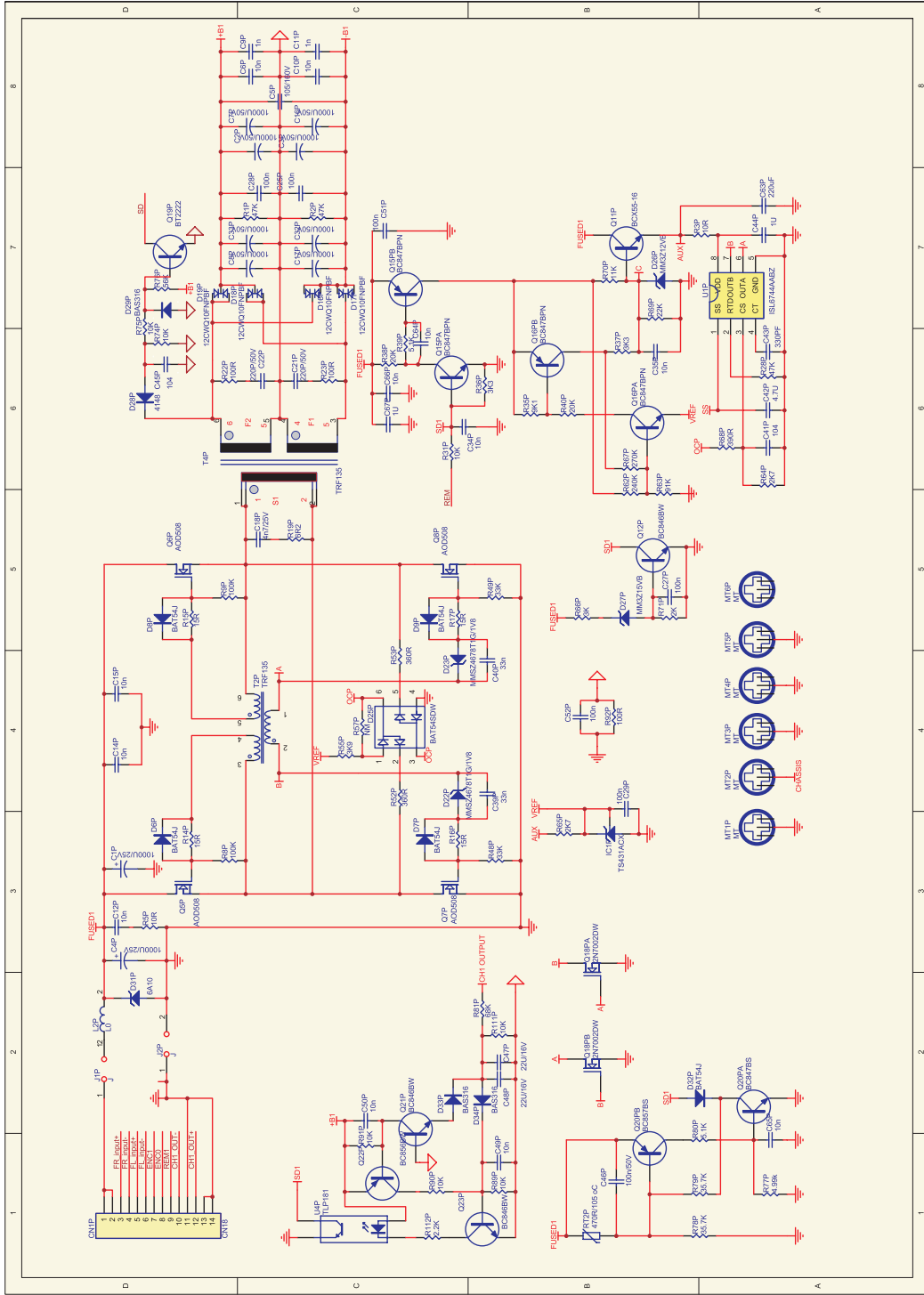
Specifications

1. SCHEMATIC DIAGRAM	-----	1-3
2. SHEET PCB	-----	4-14
3. PACKAGING EXPLODED DRAWING	-----	15
4 . MECHANICAL EXPLODED VIEW	-----	16

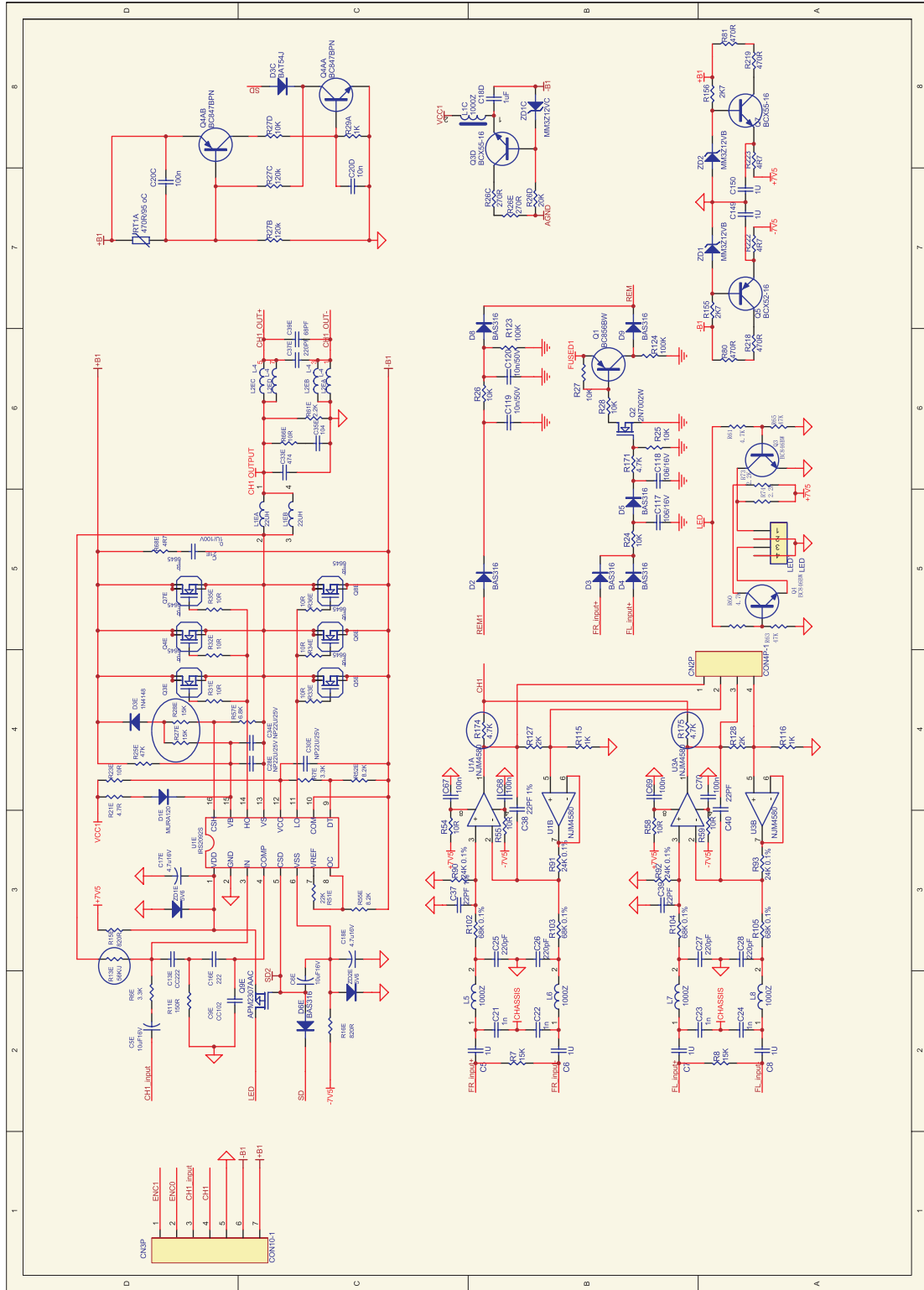
Schematic Diagram



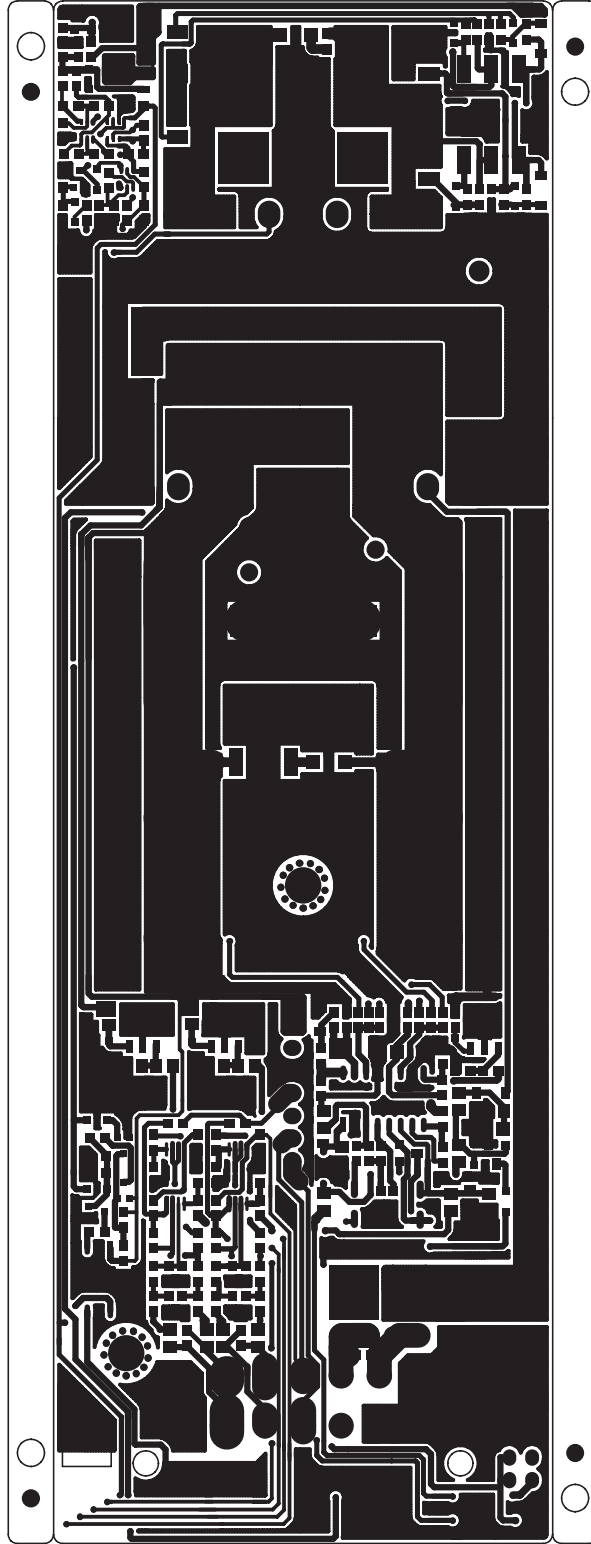
Schematic Diagram



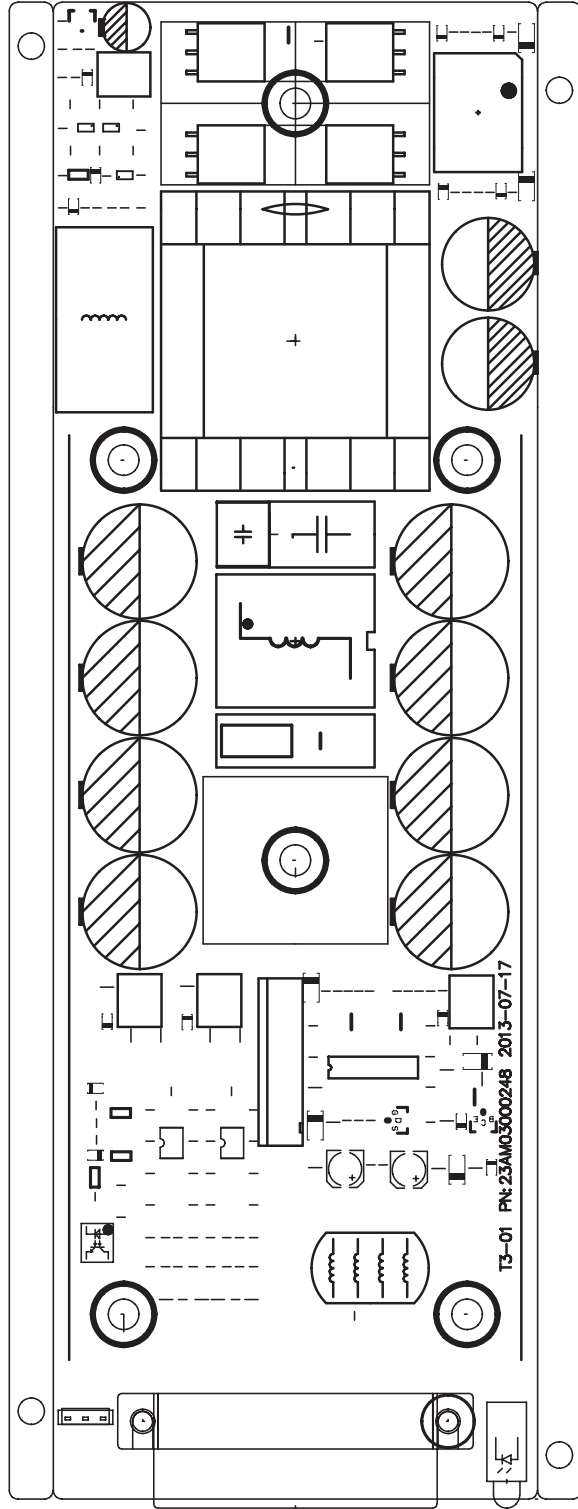
Schematic Diagram



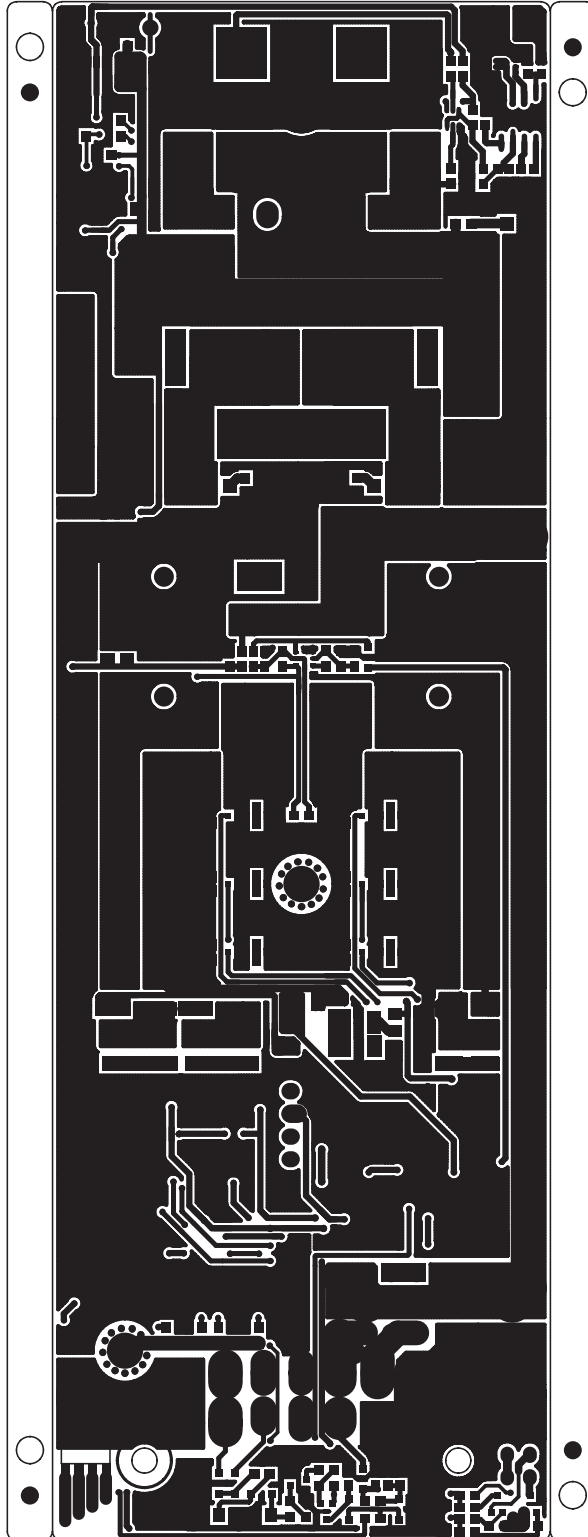
SHEE PCB



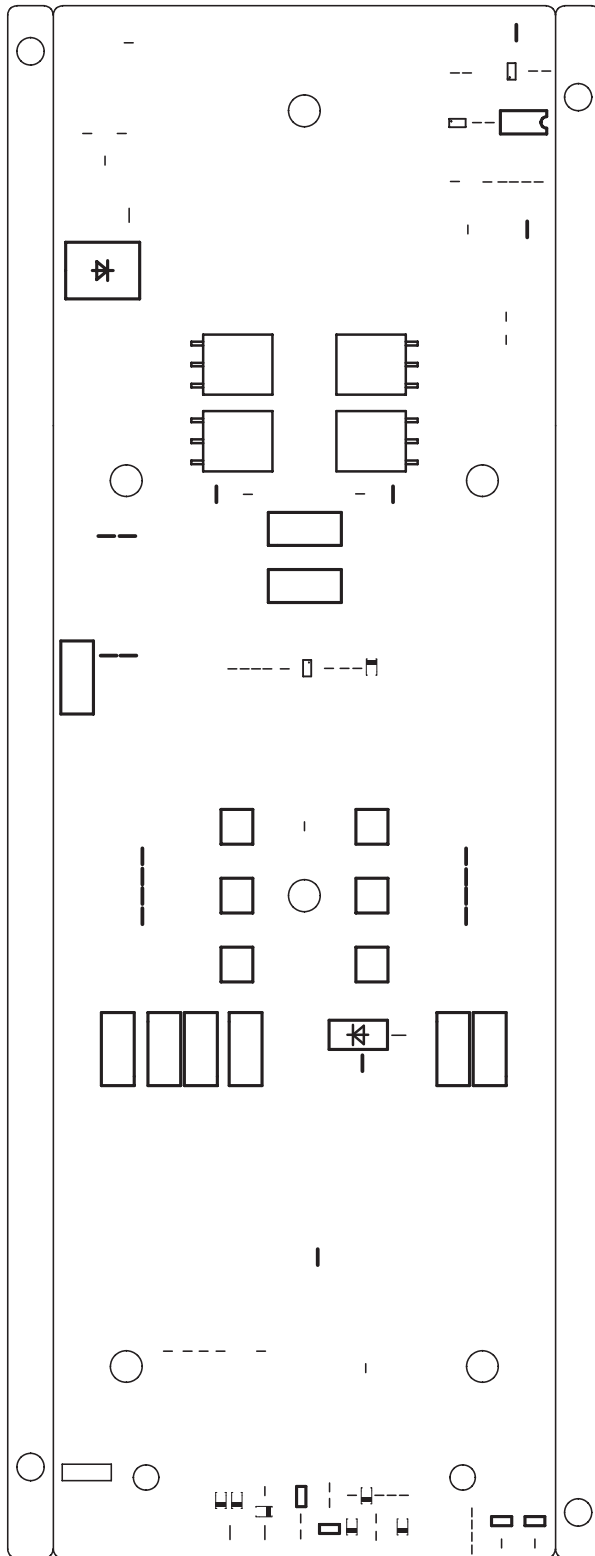
SHEE PCB



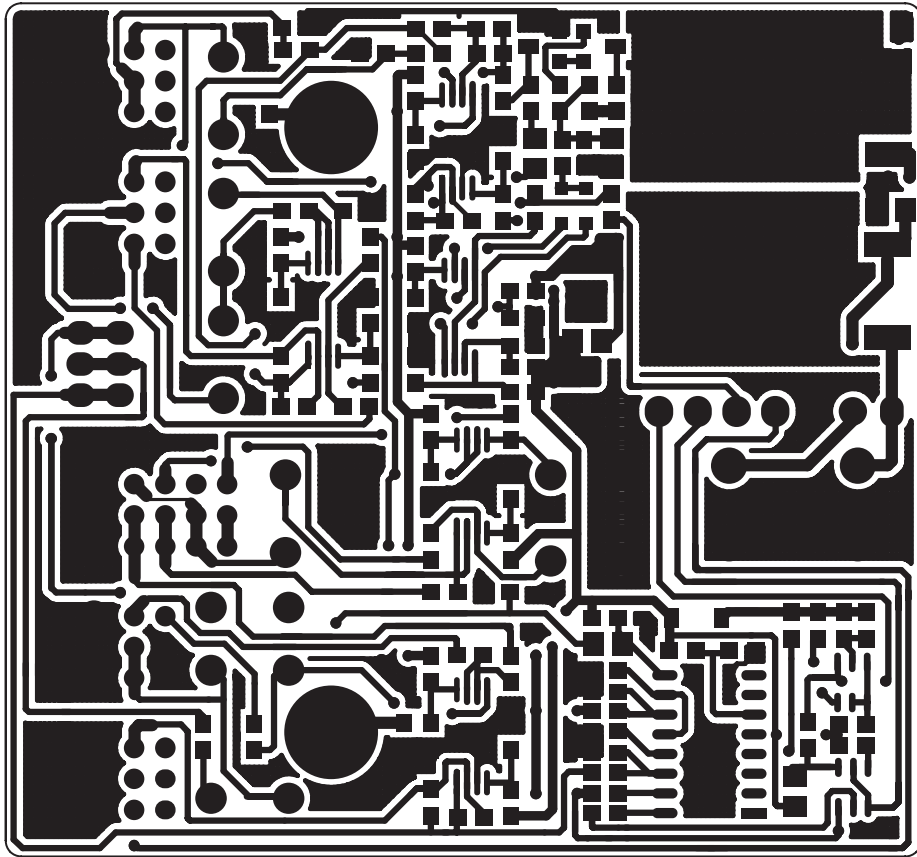
SHEE PCB



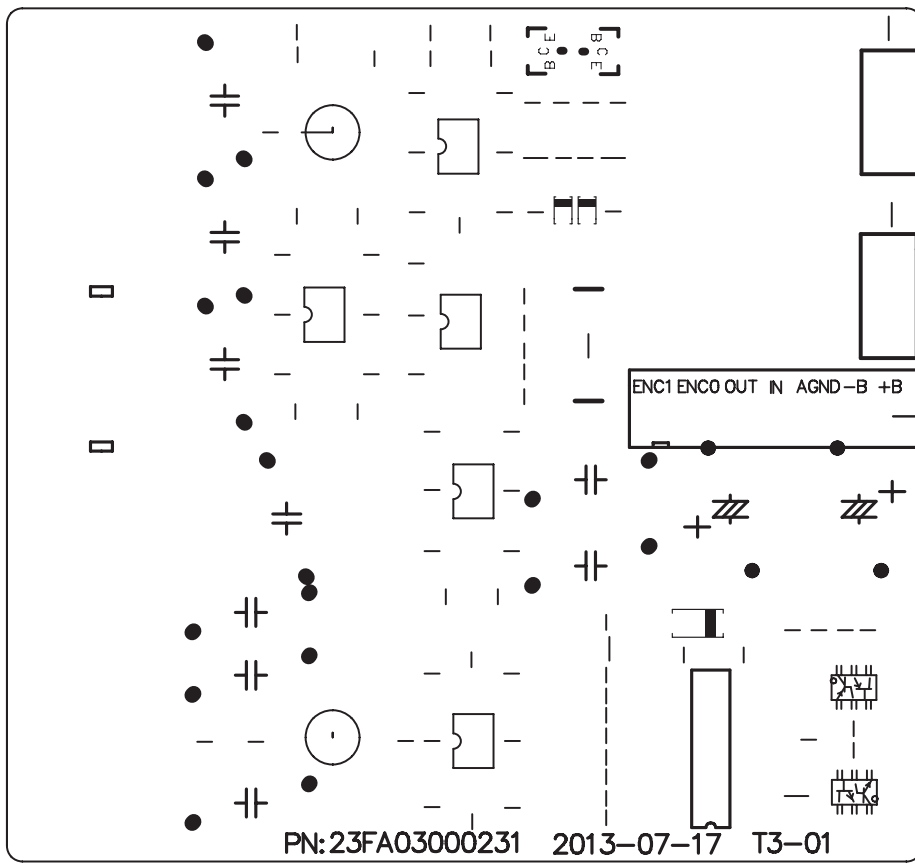
SHEE PCB



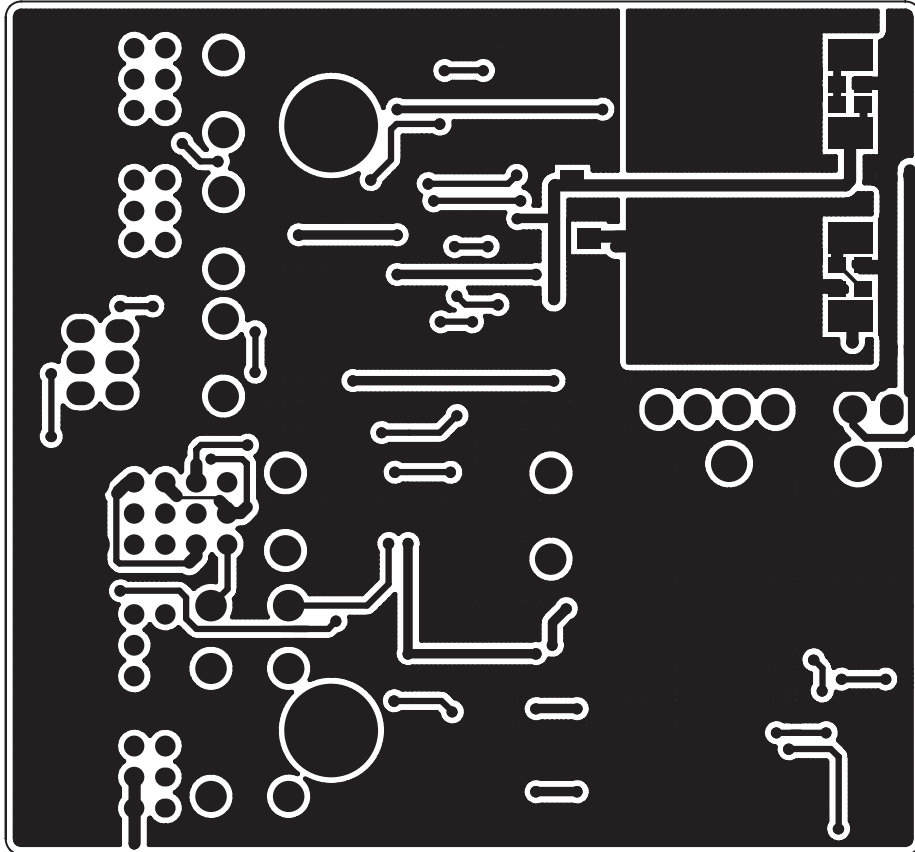
SHEE PCB



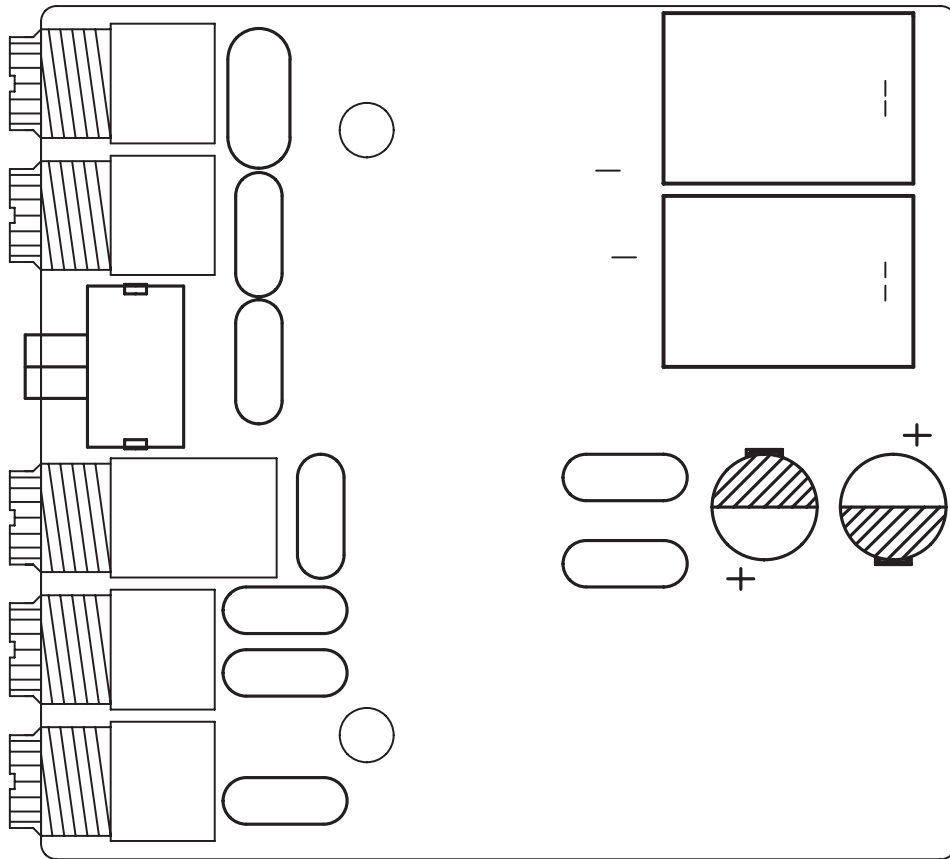
SHEE PCB



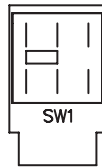
SHEE PCB



SHEE PCB



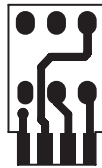
SHEE PCB



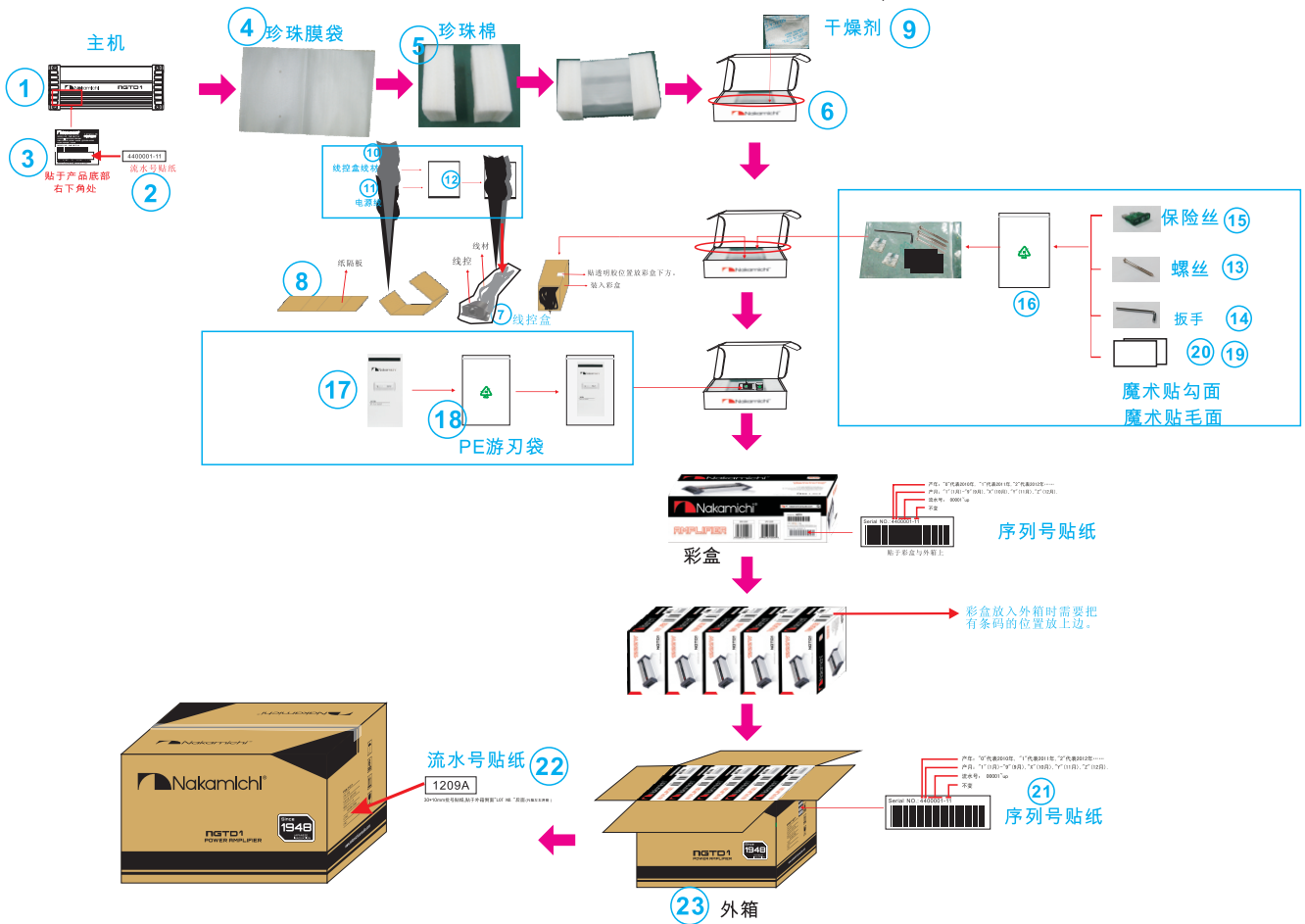
SHEE PCB



SHEE PCB

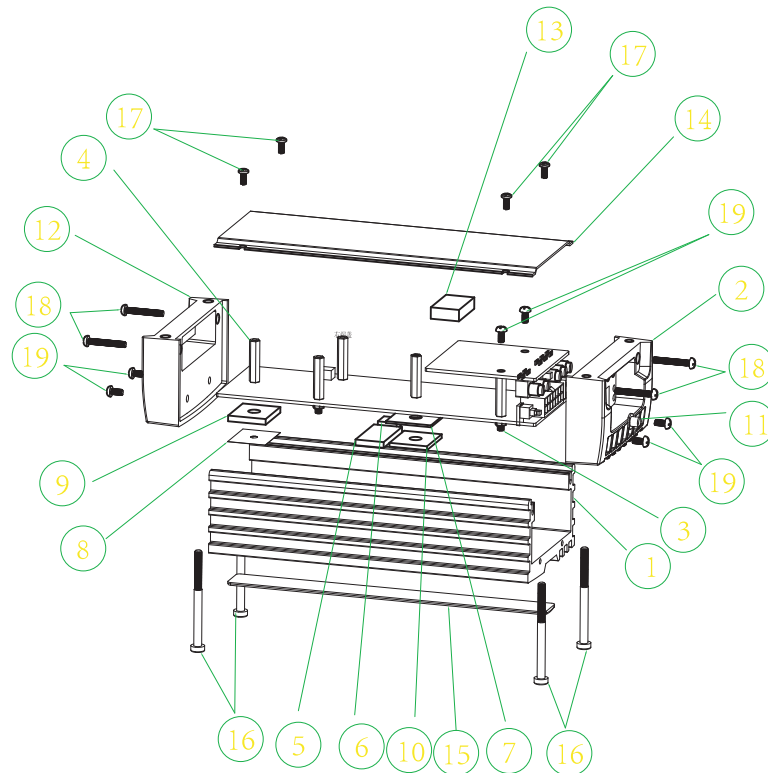


Packaging exploded Drawing



序号	料号	名称	用量	备注
①	ANGTD10M0003	主机	1	
②	TZ0302000824	流水号贴纸	1	贴于产品标上
③	TZ0102000576	产品标贴纸	1	贴于机身上
④	BZ0102000161	珍珠膜袋	1	装主机
⑤	BZ0202000300	珍珠棉	2	
⑥	CH0102000497	彩盒	1	
⑦	880103200420	线控盒	1	
⑧	BZ0802000211	纸隔板	1	装线材
⑨	LP0202000004	干燥剂	1	
⑩	170403000269	电源线	1	
⑪	170603000010	线控控制线	1	
⑫	BZ0102000022	PE袋	1	装线材
⑬	LS0201000323	内六角螺丝	4	
⑭	LP0401000007	扳手	1	
⑮	140103000045	保险丝	2	
⑯	BZ0302000007	PE游刃袋	1	装螺丝/保险丝/扳手
⑰	LP0102000882	英文说明书	1	
⑱	BZ0102000023	PE袋	1	装说明书
⑲	LP0901000052	魔术贴勾面	2	
⑳	LP0901000053	魔术贴毛面	2	
㉑	TZ0302000972	序列号贴纸	2	贴于彩盒和外箱上
㉒	TZ0302000687	流水号贴纸	2/5	贴在外箱上
㉓	WX0302000552	外箱	1/5	

Mechanical Exploded View



⑨	LS0101000086	螺丝, 圆头, 3*6MM	6
⑱	LS0201000094	螺丝, 圆头PT3*20MM	4
⑰	LS0201000088	螺丝, 圆头PT3*6MM	4
⑯	LS0201000323	内六角螺丝	4
⑮	MP0401000008	铭牌	6
⑭	XG0201300185	底板	1
⑬	JD0101000342	导热硅胶2	1
⑫	MK0101100600	左端盖	1
⑪	AJ0111100769	按键	1
⑩	SR0101000056	散热铝块2	1
⑨	SR0101000055	散热铝块1	1
⑧	JD0101000393	云母片	1
⑦	JD0101000371	导热硅胶	1
⑥	JD0101000288	导热硅胶E	1
⑤	JD0101000263	导热硅胶	1
④	ZL0101000168	六角铜柱2	6
③	ZL0101000167	六角铜柱1	6
②	MK0101200601	右端盖	1
①	SR0301000245	散热器	1
序号	物料编号	物料名称	用量