

Service Manual



CONTENTS

Technical specification	1-2
Main board	
Circuit diagram	3--6
Layout diagram	7--8
Servo board	
Circuit diagram	9
Layout diagram	10--11
Panel board	
Circuit diagram	12--14
Layout diagram	15--16
Exploded view diagram	17
Instruction Manual	page 18-37

REFERENCE

Specifications

TFT Monitor section

Screen Size	:6.8 inches
Display Resolution	:800x480 dots
Contrast Ratio	:500

Disc player section

Disc System	:DVD/CD/VCD
Disc Diameter	:12cm
Frequency Response	:20Hz - 20kHz
Signal/Noise Ratio	:>75 dB
Total Harmonic Distortion	:Less than 0.3%
Channel Separation	:>55 dB
Video Signal Format	:NTSC/PAL
Video Output	:1+/-0.2V p-p

USB interface section

USB Standard	:USB 2.0 Full Speed
File System	:FAT 16/32
Maximum Current	:DC 5V= 1A
D/A Converter	:24Bit
Video Decoder	:MPEG1/MPEG2
Audio Decoder	:MP3

Memory Card section

Memory Cards	:SD/SDHC
Maximum Capacity	:32G

Bluetooth section

Communication System	: Bluetooth Standard version 2.0
Output	: Bluetooth Standard Power Class 2
Maximum Communication Range	: Approx. 5meters
Frequency Band	: 2.4 GHz
Compatible Bluetooth Profiles	: HFP/HSP/A2DP/AVRCP
Supported Codecs	: SBC (Sub Band Codec)

Radio section

Frequency FM range	: 87.5 - 108.0 MHz
Frequency AM(MW) range	: 522-1620 KHz
Usable sensitivity	: 2 uV (FM) : 80 uV (AM)(MW)

Video section

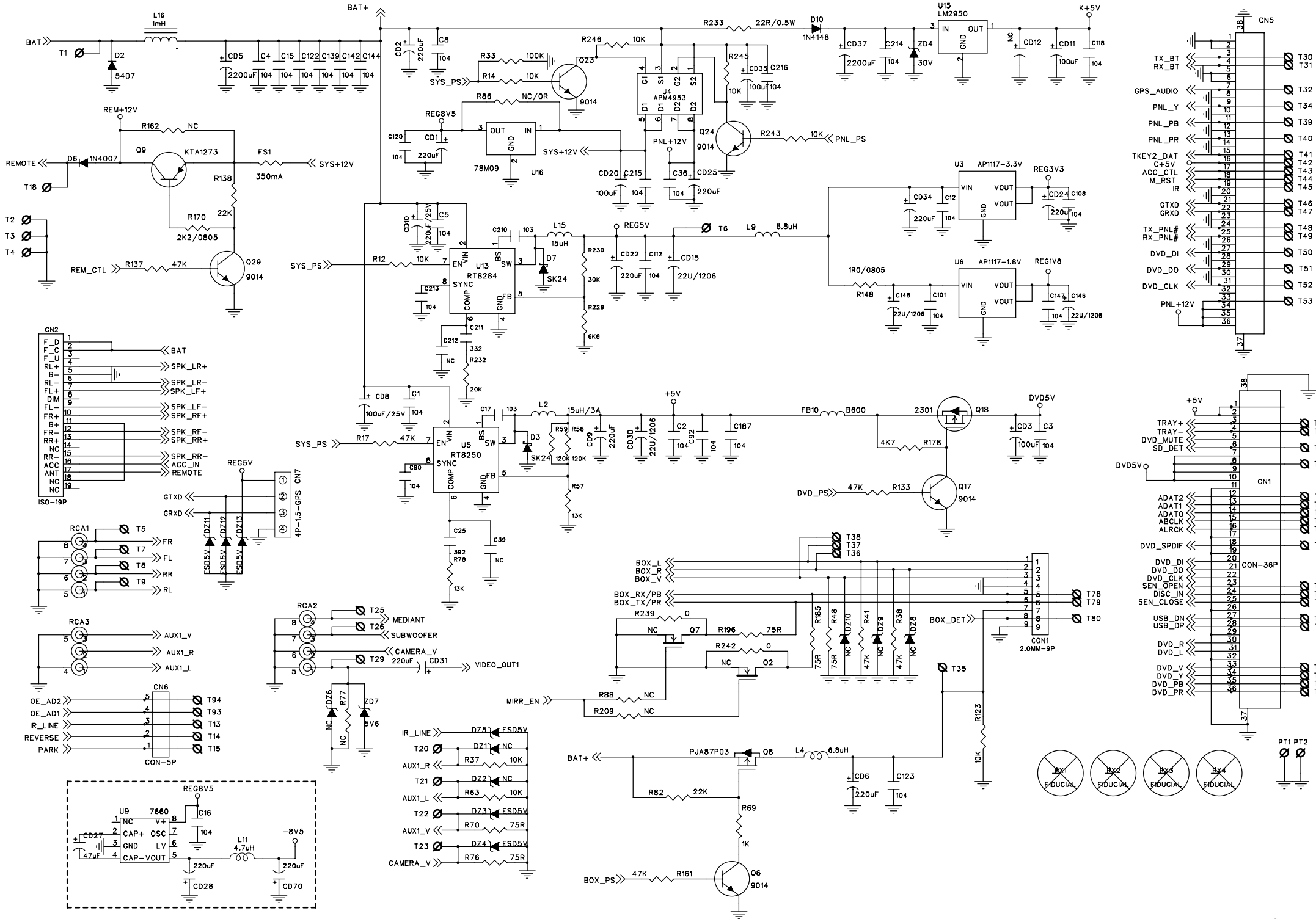
Color System of External Video Input	: NTSC/PAL/SCEAM
External Video Input (RCA/3.5m Jack)	: 1 Vp-p /75Ω

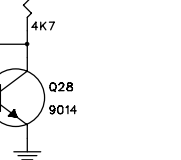
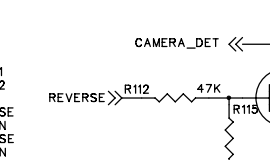
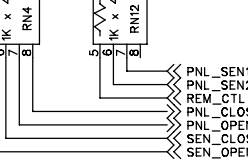
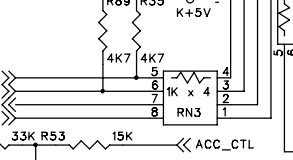
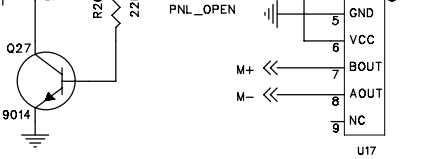
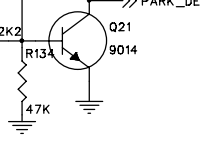
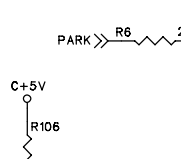
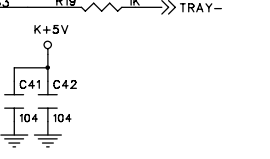
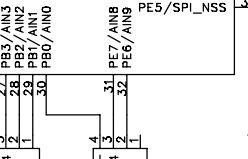
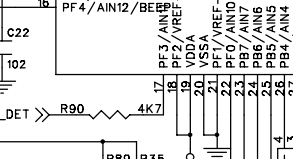
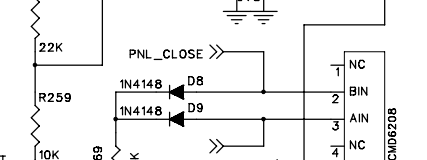
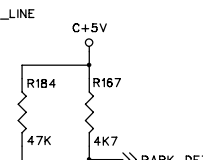
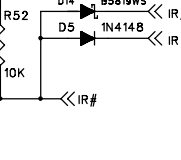
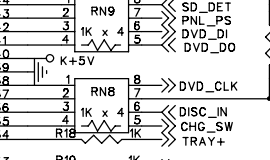
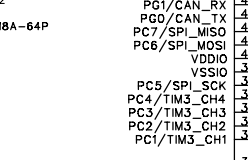
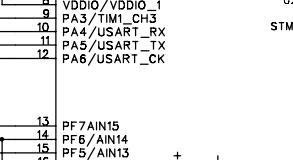
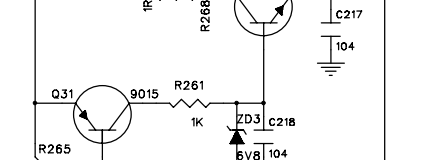
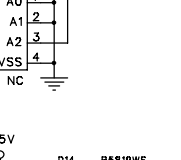
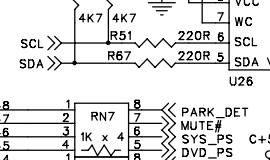
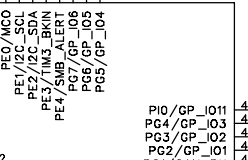
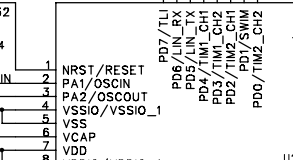
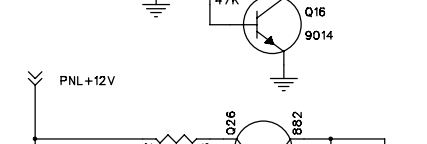
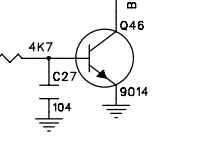
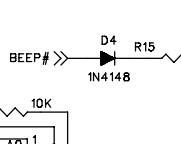
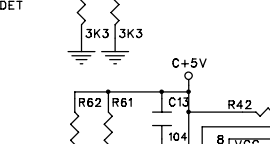
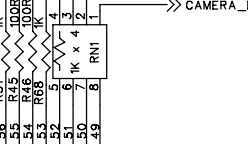
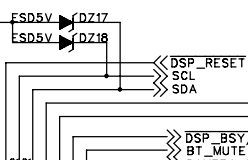
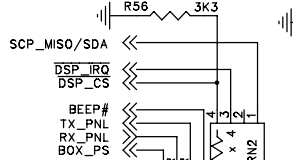
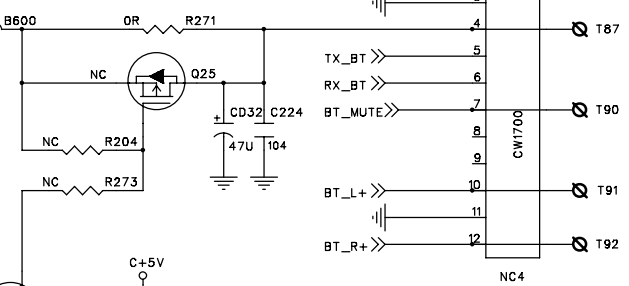
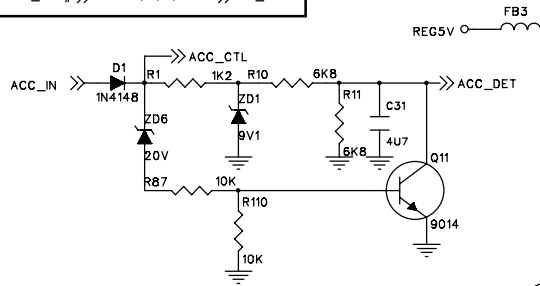
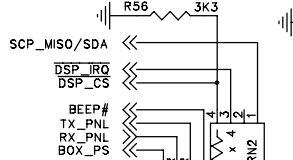
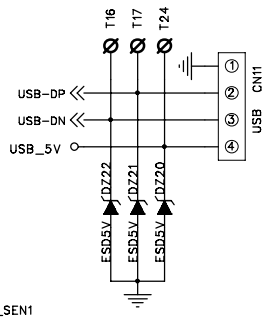
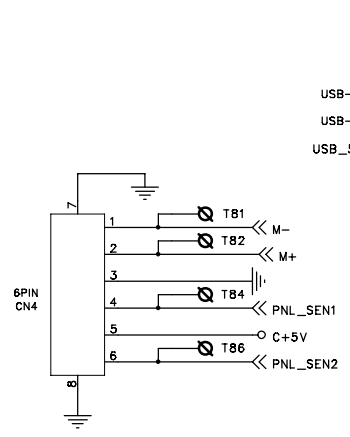
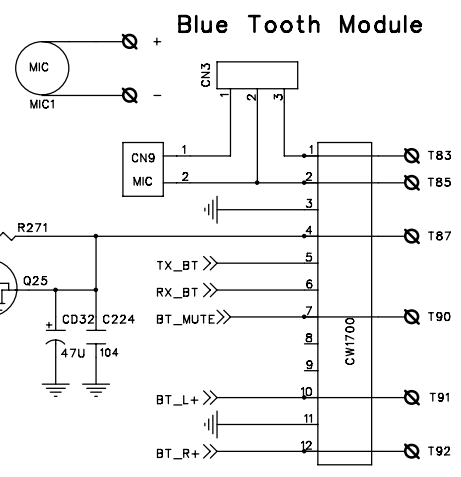
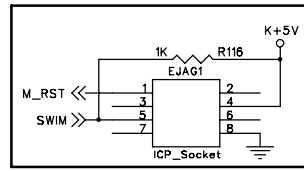
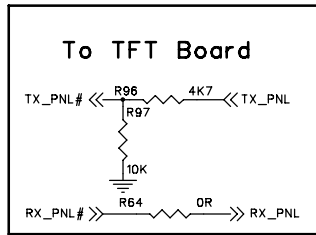
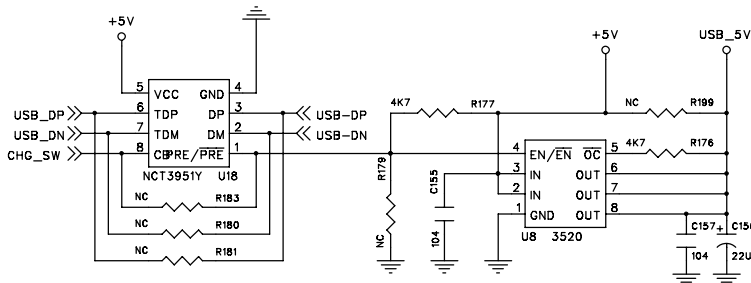
Audio section

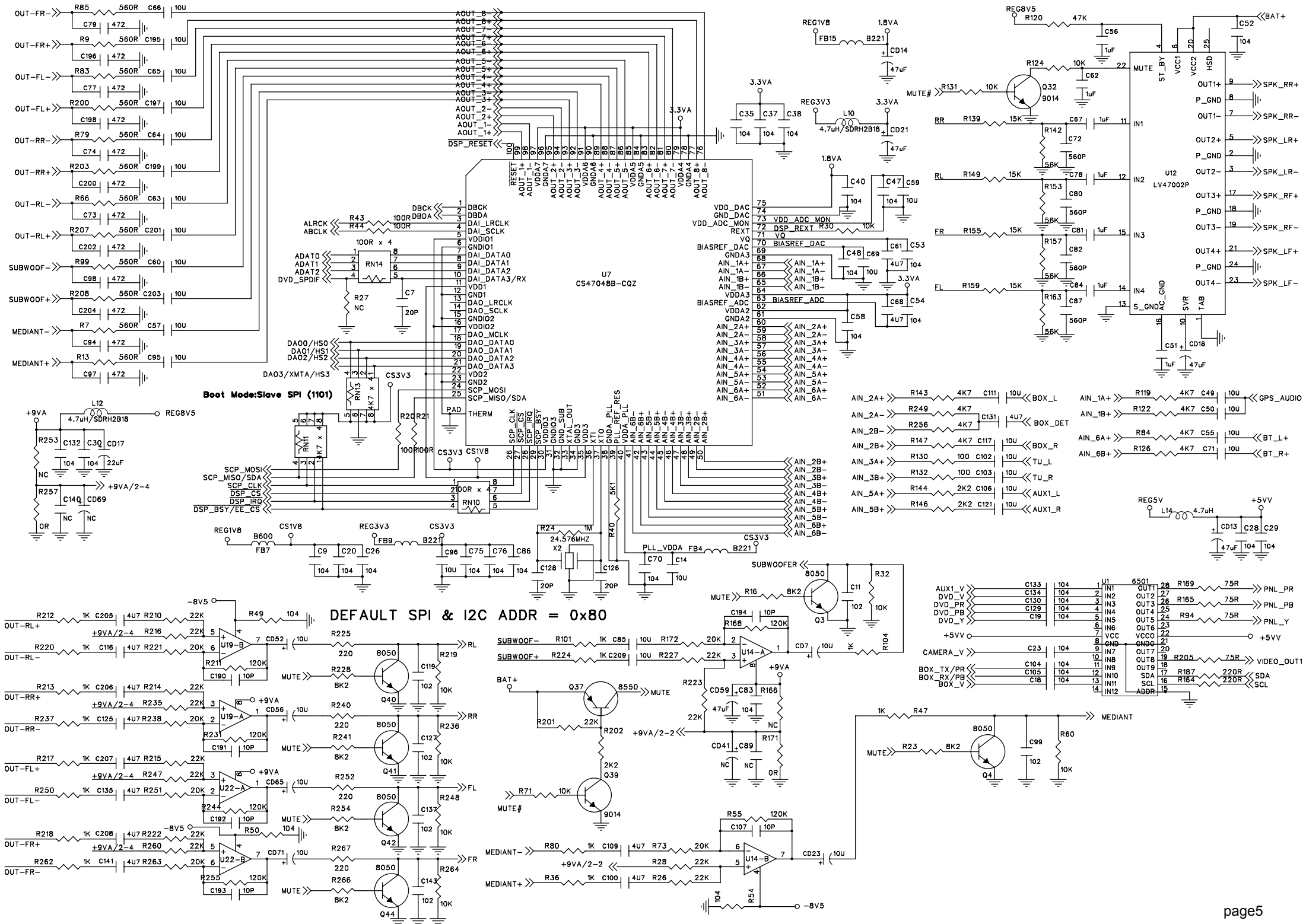
Maximum Power	: 50Wx4
Continuous Power Output (RMS)	: 22 Wx4
Preout Level (V)	: 5 V/10kΩ
Preout Impedance	: ≤ 600Ω
Speaker Impedance	: 4-8 Ω
External Audio Input Level (RCA)	: 1 V/10KΩ
External Audio Input Level (3.5mm Jack)	: 600mv/10KΩ (<1%THD)

General

Operating Voltage	: 14.4V(10.5-16 V)
Dimension(WxHxD)	: 178x102x172mm
Operational Temperature Range	: -10°C-+60°C
Storage Temperature Range	: -20°C-+80°C
Weight	: 2.49 kg





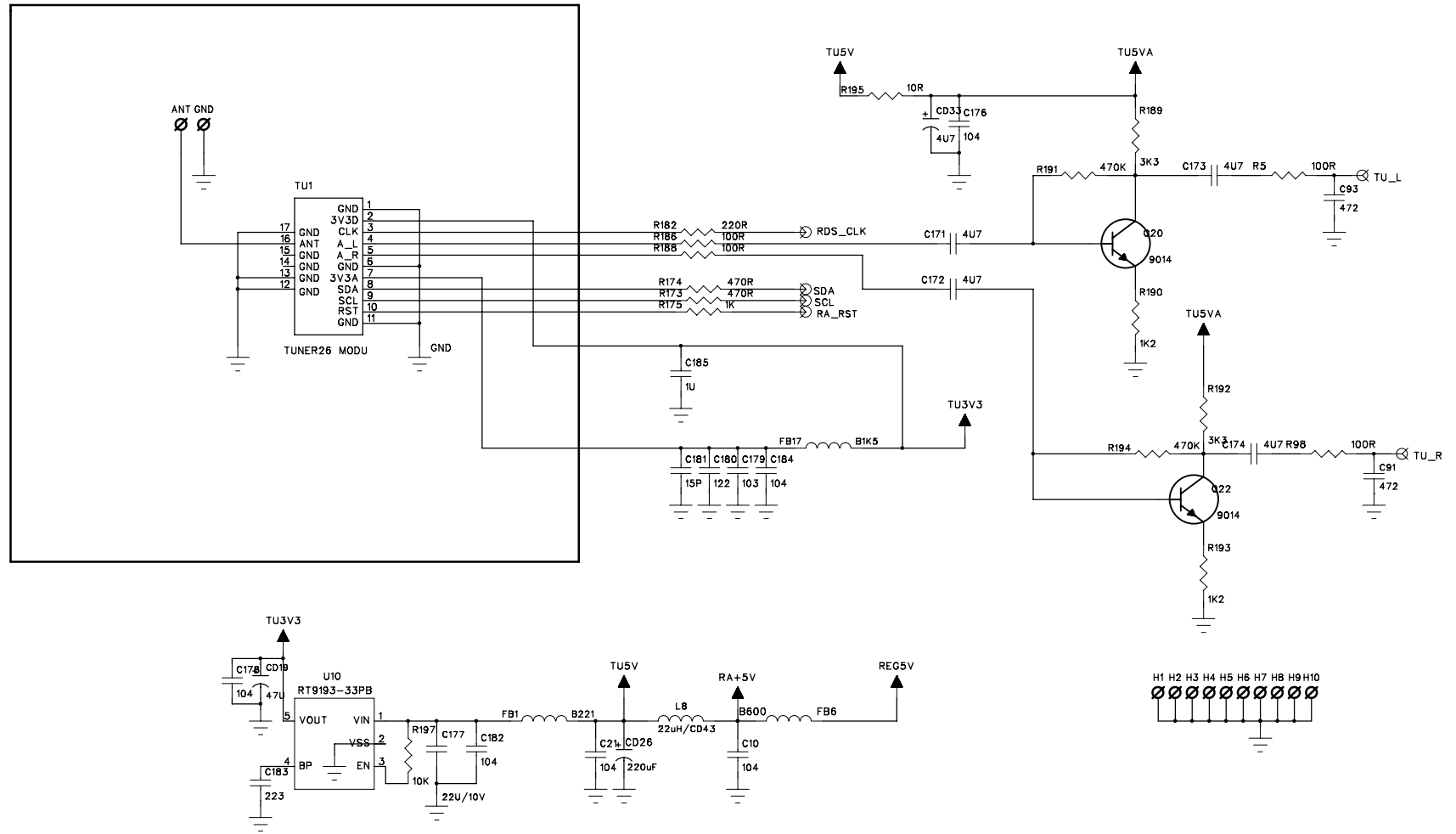


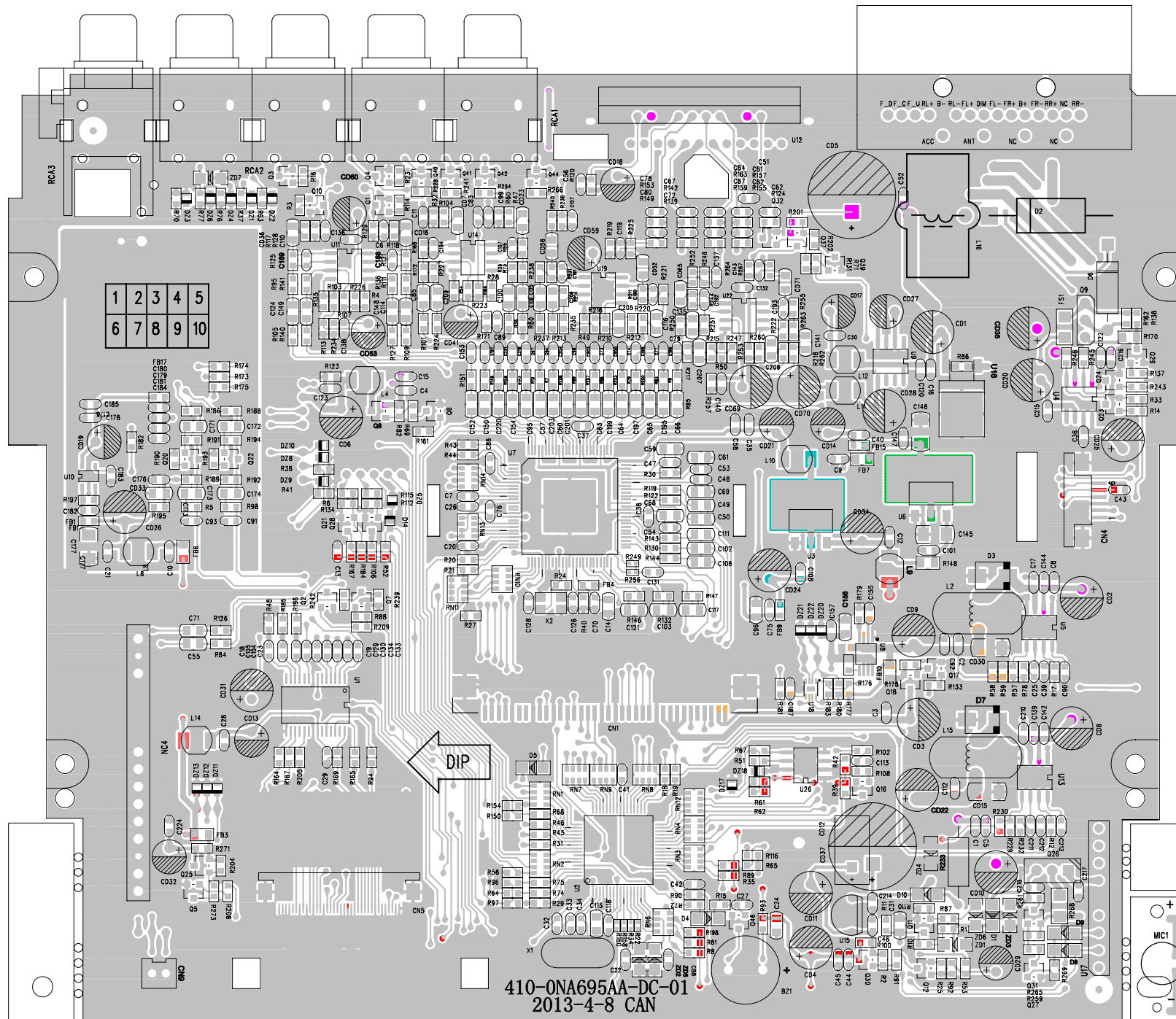
Boot Mode: Slave SPI (1101)

DEFAULT SPI & I2C ADDR = 0x80

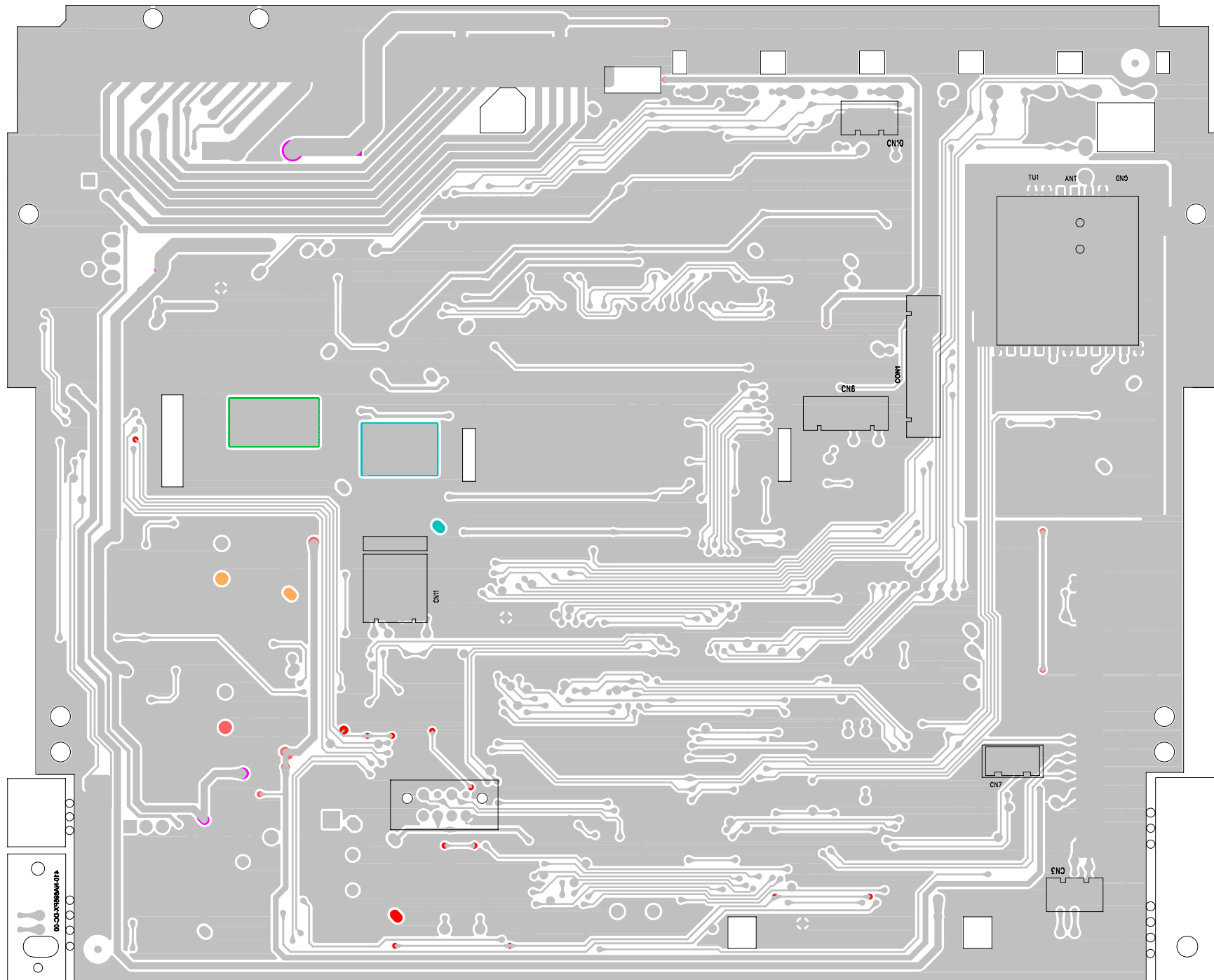
U7 CS47048B-CQZ

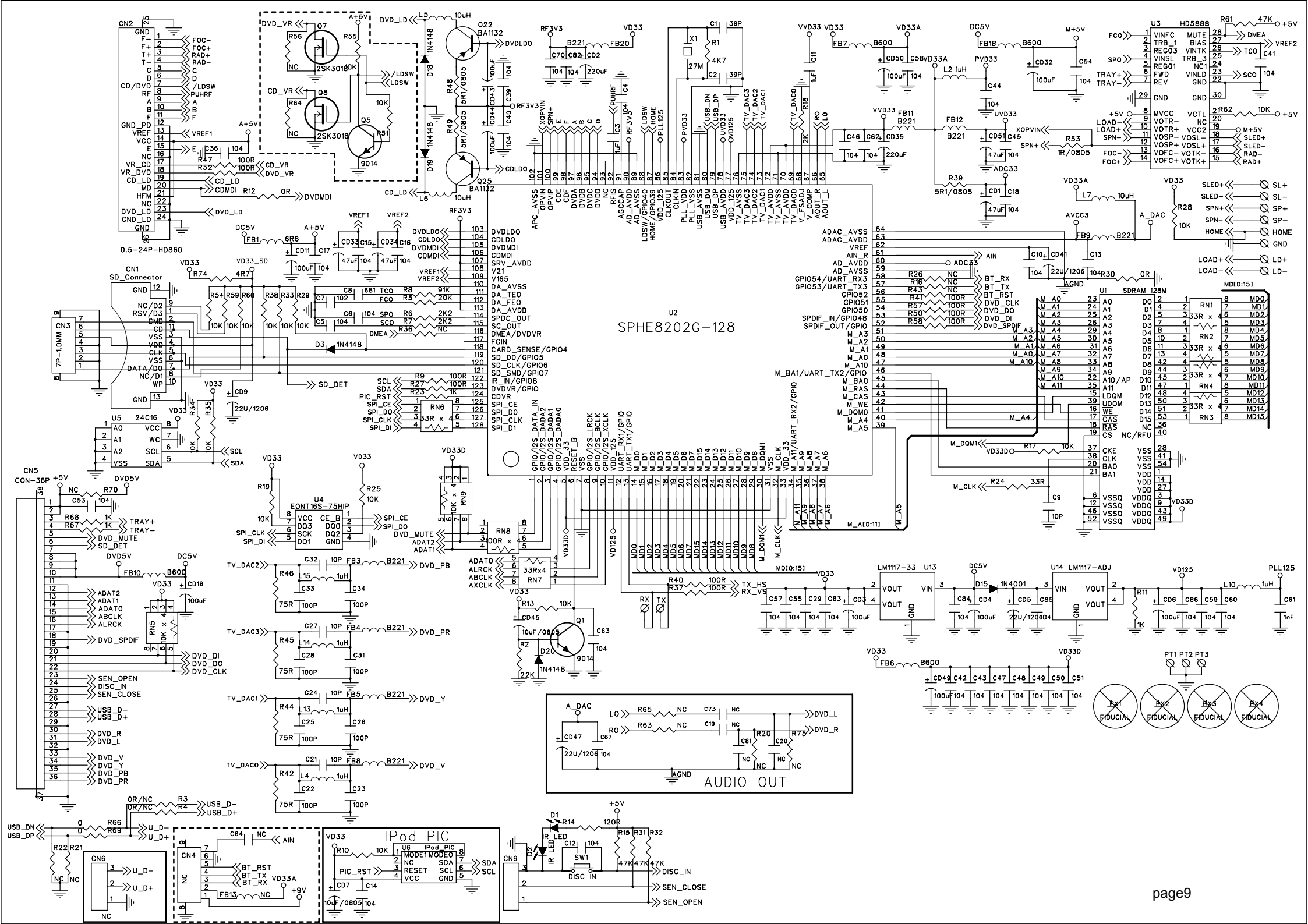
AUX1_V	C133	104	1	IN1	6501	28	R169	75R	P_NL_PR
DVD_V	C134	104	2	IN2	OUT1	27			
DVD_PR	C130	104	3	IN3	OUT2	26	R165	75R	P_NL_PB
DVD_PB	C129	104	4	IN4	OUT3	25			
DVD_Y	C18	104	5	IN5	OUT4	24	R94	75R	P_NL_Y
			6	IN6	OUT5	23			
			7	IN6	OUT6	22			
			8	VCC	VCC0	21			
			9	IN7	OUT7	20			
CAMERA_V	C23	104	9	IN7	OUT8	19	R205	75R	VIDEO_OUT1
			10	IN8	OUT9	18			
BOX_TX/PR	C104	104	11	IN9	OUT9	17	R187	220R	SDA
BOX_RX/PB	C105	104	12	IN10	SDA	16	R164	220R	SCL
BOX_V	C18	104	13	IN11	SCL	15			
			14	IN12	ADDR	15			

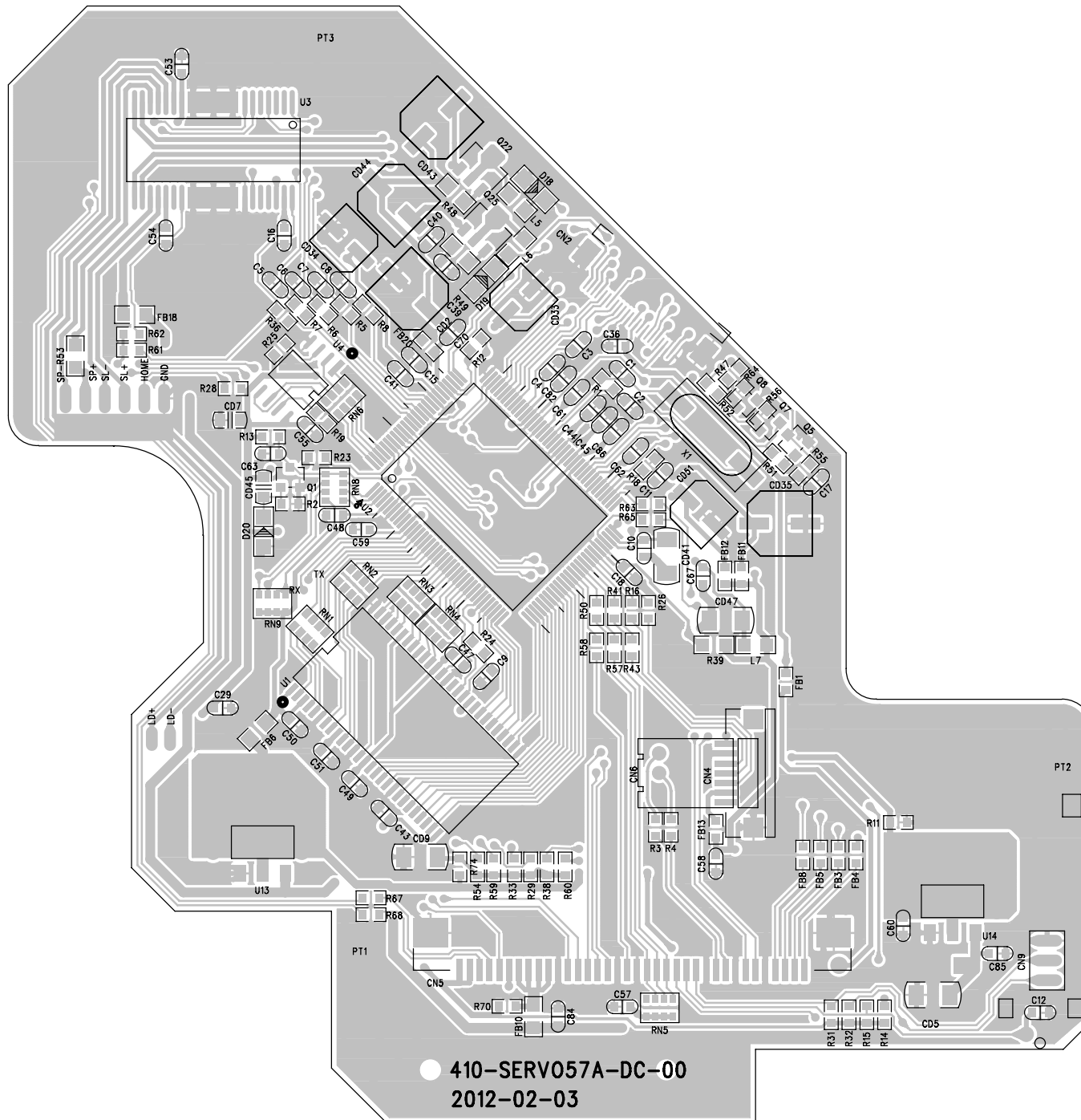


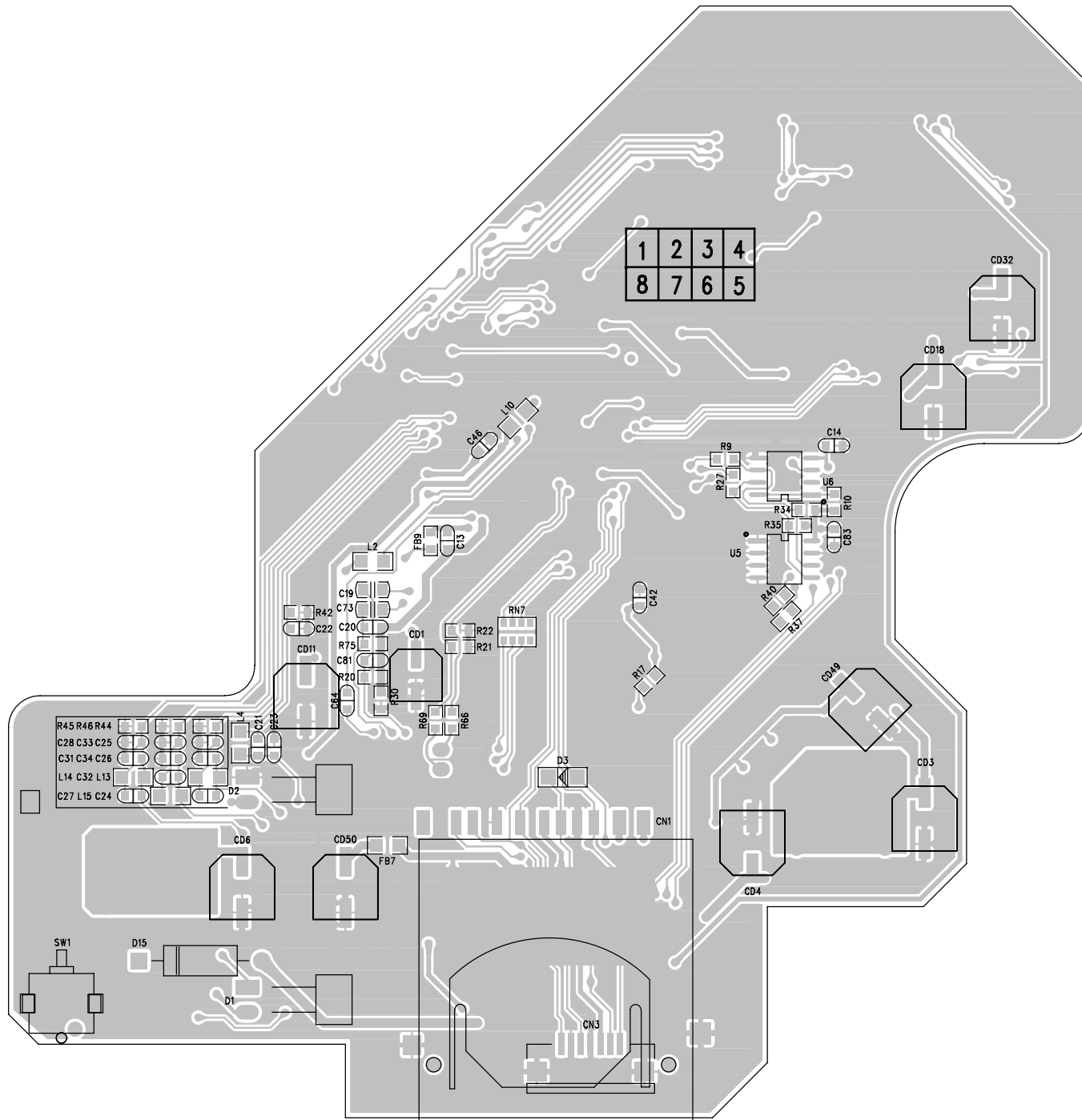


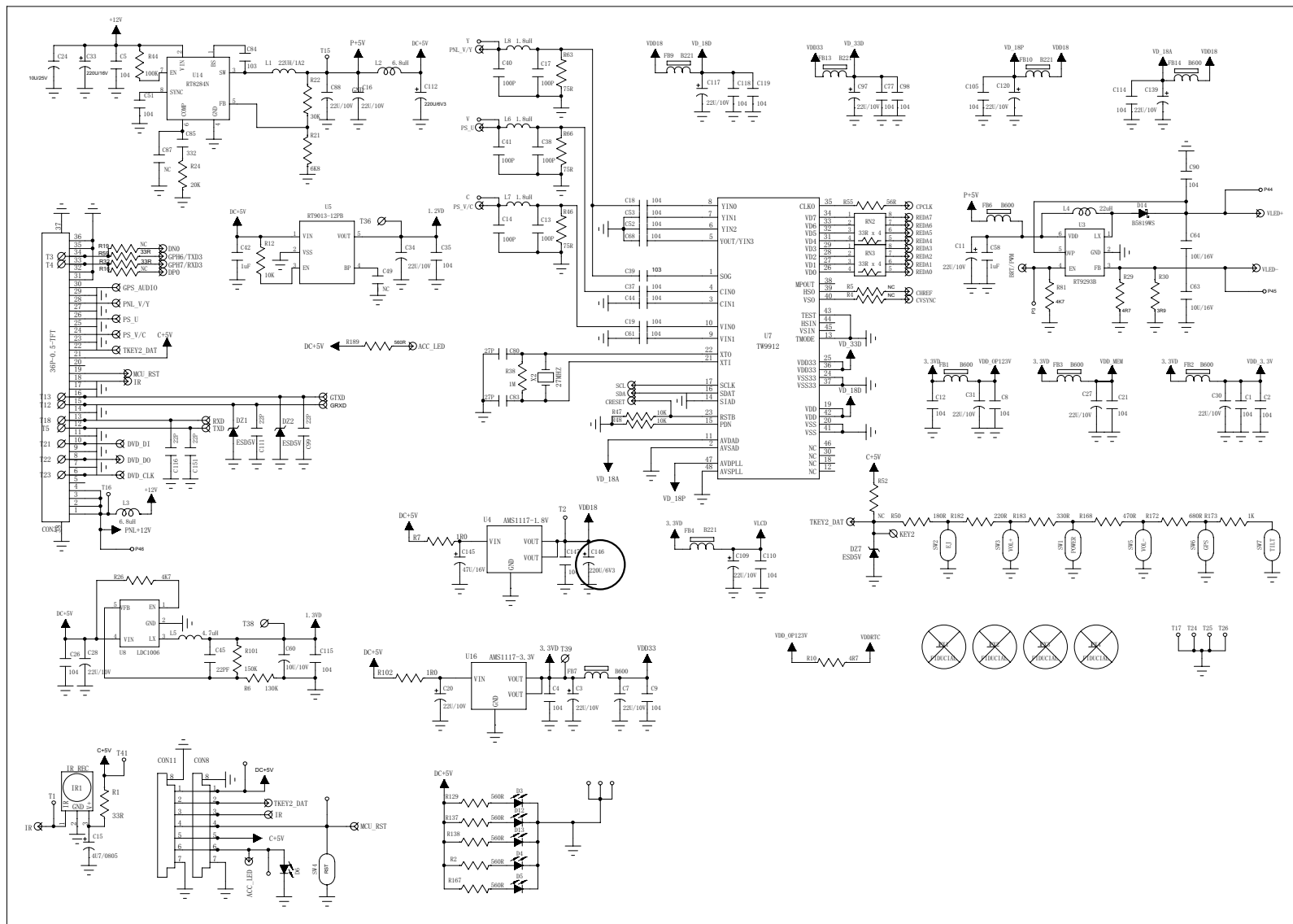
410-ONA695AA-DC-01
2013-4-8 CAN

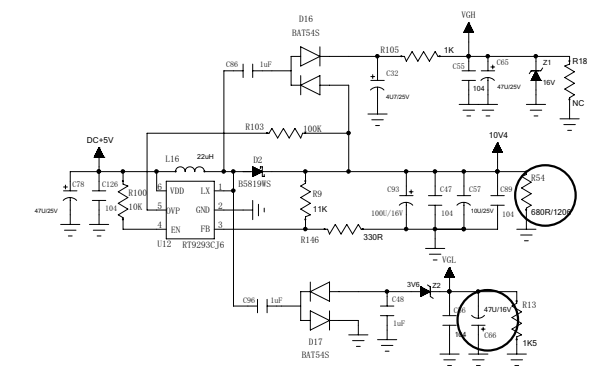
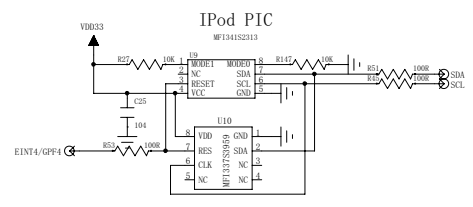
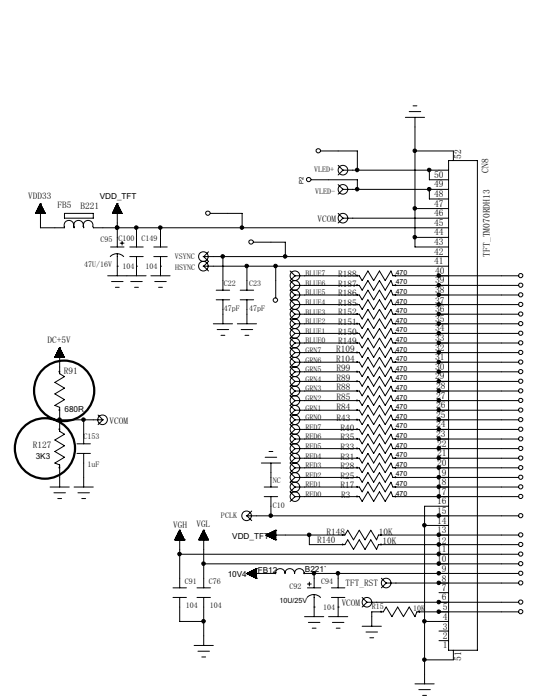


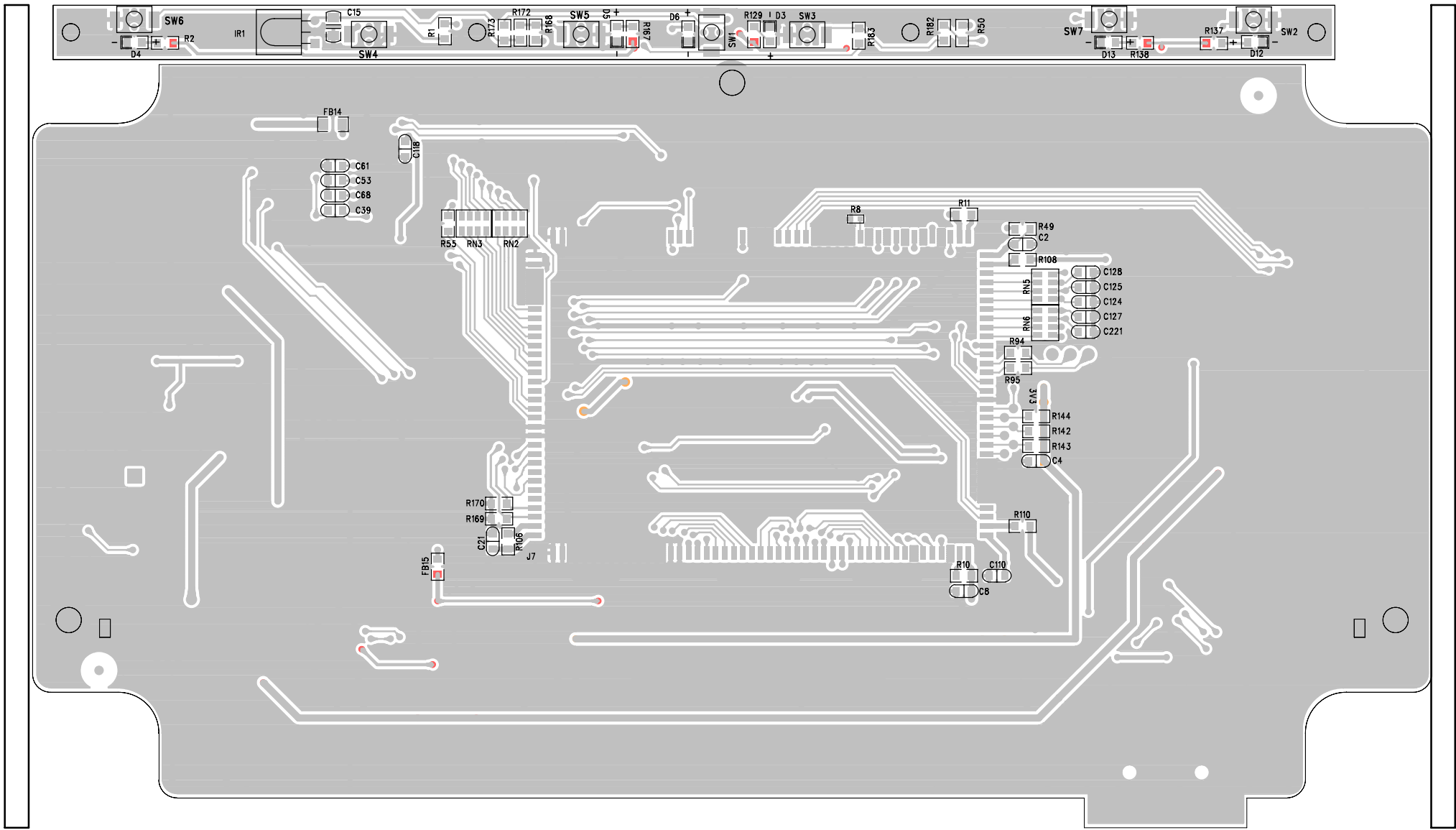










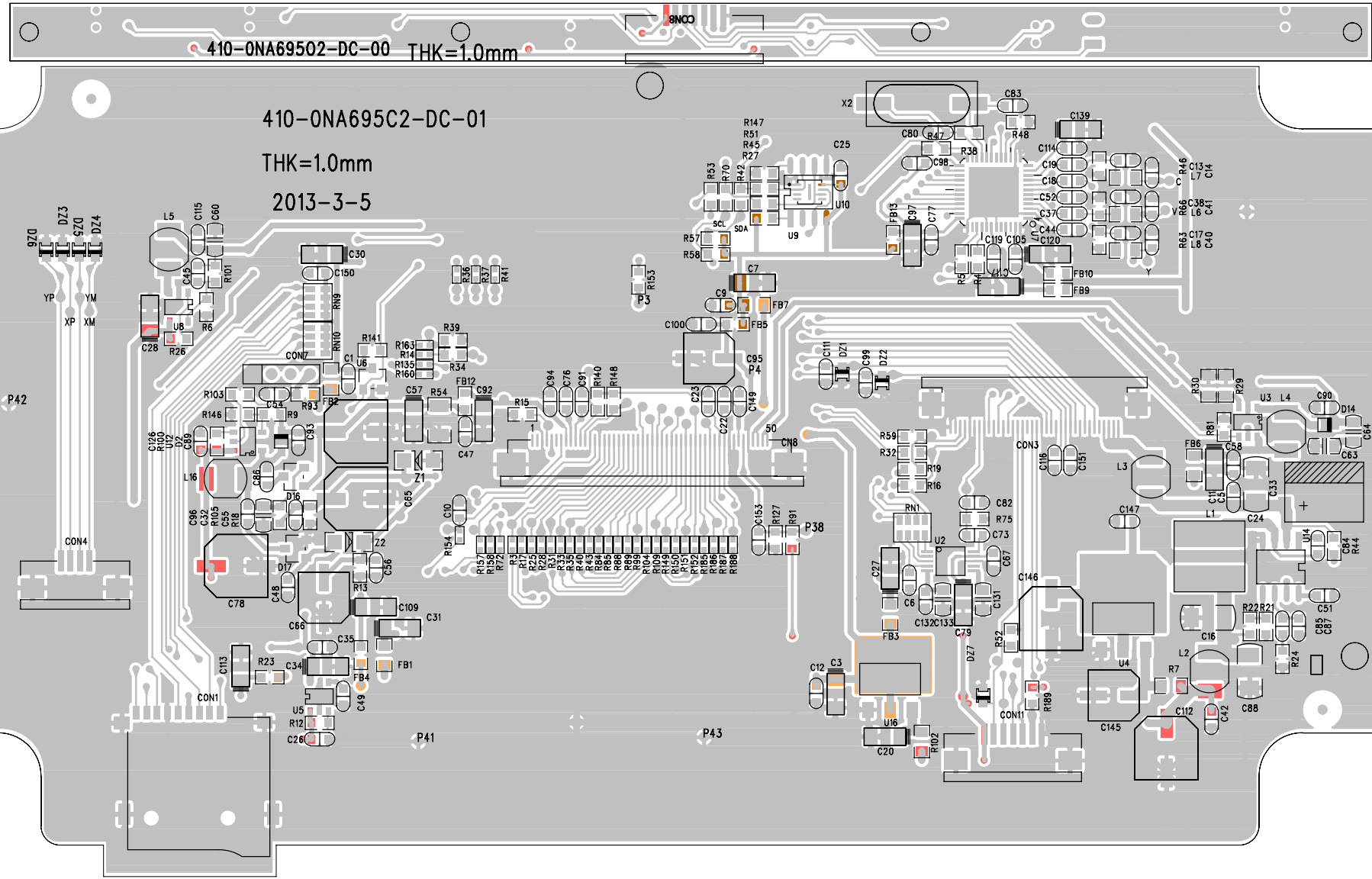


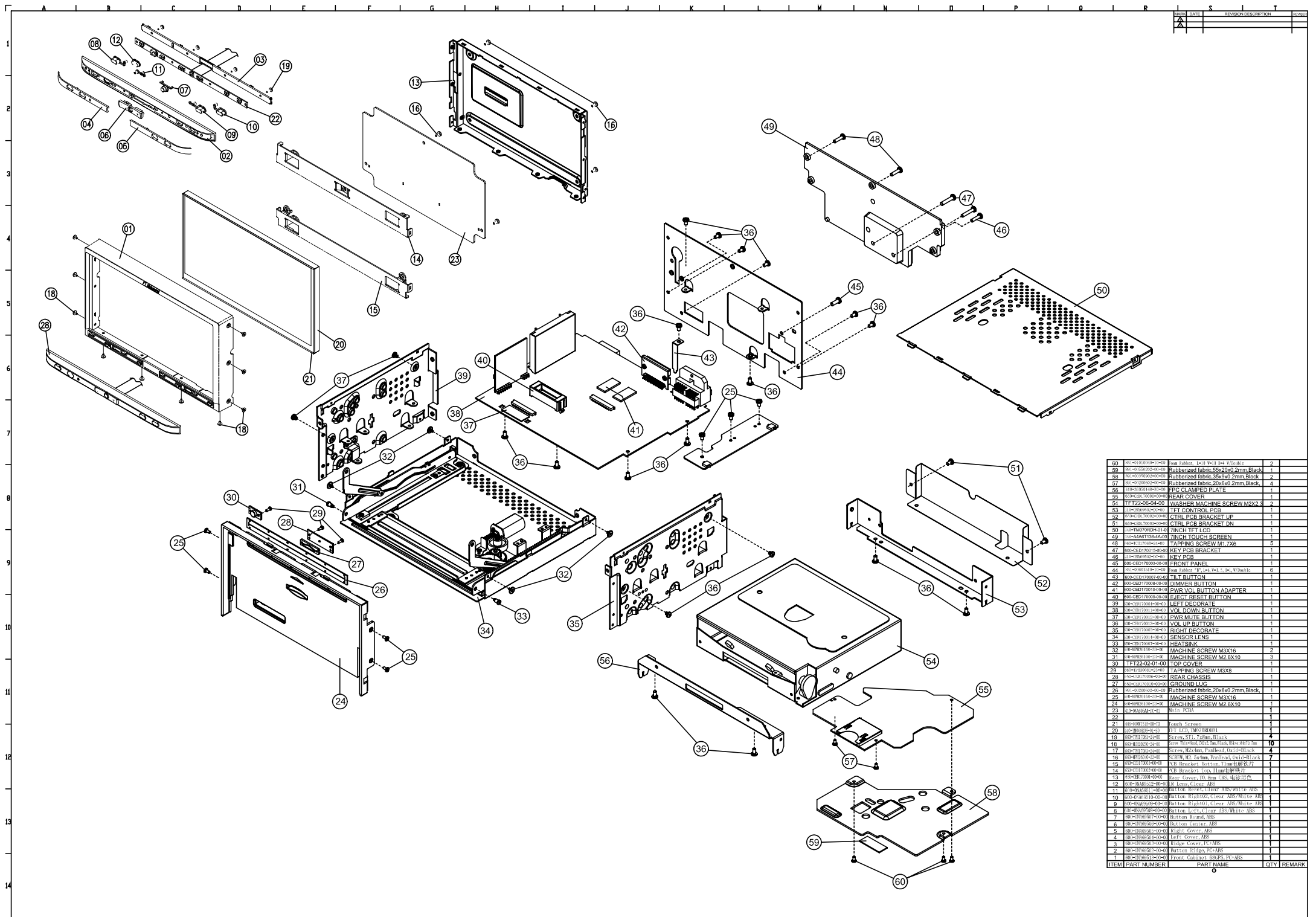
410-ONA69502-DC-00 THK=1.0mm

410-ONA695C2-DC-01

THK=1.0mm

2013-3-5





ITEM	PART NUMBER	PART NAME	QTY	REMARK
60	81-0000000-000	Back Label, Left Part 1, 4x10x16	2	
59	81-0000000-000	Rubberized fabric, 55x20x0.2mm, Black	2	
58	81-0000000-000	Rubberized fabric, 35x9x0.2mm, Black	2	
57	81-0000000-000	Rubberized fabric, 20x6x0.2mm, Black	4	
56	110-0000000-000	PCB DAMPED PLATE	1	
55	80-0000000-000	REAR COVER	1	
54	TFT22-06-24-00	WASHER MACHINE SCREW M2X2.3	2	
53	110-0000000-000	TFT CON. ROL PCB	1	
52	80-0000000-000	CTRL PCB BRACKET UP	1	
51	80-0000000-000	CTRL PCB BRACKET DN	1	
50	40-0000000-000	7INCH TFT LCD	1	
49	100-0000000-000	KEY PCB	1	
48	40-0000000-000	TAPPING SCREW M1.7X6	5	
47	80-0000000-000	KEY PCB BRACKET	1	
46	110-0000000-000	KEY PCB	1	
45	80-0000000-000	FRONT PANEL	1	
44	81-0000000-000	Back Label, Top Part 1, 8x, 3, 8x, 3, 8x, 3, 8x, 3	6	
43	80-0000000-000	BT BUTTON	1	
42	80-0000000-000	DIMMER BUTTON	1	
41	80-0000000-000	PWR VOL BUTTON ADAPTER	1	
40	80-0000000-000	EJECT RESET BUTTON	1	
39	80-0000000-000	LEFT DECORATE	1	
38	80-0000000-000	VOL DOWN BUTTON	1	
37	80-0000000-000	PWR MUTE BUTTON	1	
36	80-0000000-000	VOL UP BUTTON	1	
35	80-0000000-000	RIGHT DECORATE	1	
34	30-0000000-000	SENSOR LENS	1	
33	80-0000000-000	HEAT SINK	1	
32	80-0000000-000	MACHINE SCREW M3X16	2	
31	80-0000000-000	MACHINE SCREW M2.6X10	3	
30	TFT22-02-01-00	TOP COVER	1	
29	80-0000000-000	TAPPING SCREW M3X8	1	
28	80-0000000-000	REAR CHASSIS	1	
27	80-0000000-000	GROUND LUG	1	
26	80-0000000-000	Rubberized fabric, 20x6x0.2mm, Black	1	
25	80-0000000-000	MACHINE SCREW M3X16	1	
24	80-0000000-000	MACHINE SCREW M2.6X10	1	
23	80-0000000-000	BTX PCB	1	
22	80-0000000-000	BTX PCB	1	
21	100-0000000-000	Touch Screen	1	
20	80-0000000-000	BT LCD, 100x100x10	1	
19	100-0000000-000	Screen, 5.1", 7.8mm, Black	4	
18	100-0000000-000	Screen, 5.1", 7.8mm, Black	4	
17	100-0000000-000	Screen, 5.1", 7.8mm, Black	4	
16	100-0000000-000	Screen, 5.1", 7.8mm, Black	4	
15	80-0000000-000	X.B. Bracket, Bottom, 1.5mm, 10x10x10	7	
14	80-0000000-000	X.B. Bracket, Top, 1.5mm, 10x10x10	7	
13	80-0000000-000	Base Cover, 10.5mm, ABS, 10x10x10	1	
12	80-0000000-000	R. Top Cover, ABS	1	
11	80-0000000-000	L. Top Cover, ABS	1	
10	80-0000000-000	Button, Right, 1.5mm, ABS, White	1	
9	80-0000000-000	Button, Right, 1.5mm, ABS, White	1	
8	80-0000000-000	Button, Left, 1.5mm, ABS, White	1	
7	80-0000000-000	Button, Right, ABS	1	
6	80-0000000-000	Button, Left, ABS	1	
5	80-0000000-000	Right Cover, ABS	1	
4	80-0000000-000	Left Cover, ABS	1	
3	80-0000000-000	Right Cover, ABS	1	
2	80-0000000-000	Left Cover, ABS	1	
1	80-0000000-000	Front Cabinet, ABS, 10x10x10	1	



NA2750 AV Media Receiver User Manual



Enjoy the Lifestyle of In-Car Entertainment



CONTENTS

Contents

Thank you for purchasing a Nakamichi products.

Please read all instructions carefully before operation, to ensure your complete understanding and to obtain the best possible performance from the unit.

INTRODUCTIONS

View demo before first use.....	2
Overview the unit.....	3
Basic operations.....	4

AV MEDIA

Listening to the radio.....	5
Playing the music.....	6
Enjoying the movie.....	7
Viewing the photo.....	8
Sharing your iPod/iPhone.....	9

BLUETOOTH

Using bluetooth.....	10
----------------------	----

2 ZONE

Rear entertainment zone.....	11
------------------------------	----

AUDIO ADJUSTMENT

Equalizer.....	13
Subwoofer.....	14
Speaker.....	15
Audio zone.....	15
Time alignment.....	15
Fader/Balance.....	15
5.1 Audio playback.....	16

NAVIGATION

Navigation settings.....	17
--------------------------	----

REFERENCE

Specifications.....	18
---------------------	----

INTRODUCTIONS

View demo before first use

Please preview those advance features of this unit through the DEMO mode on this unit.

1. Access to general settings.



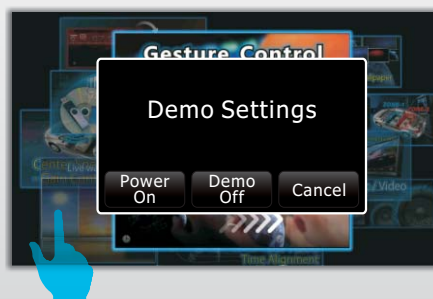
2. Turn on the demo mode.



3. Press & hold this button to power off the unit, demo will be play automatically.

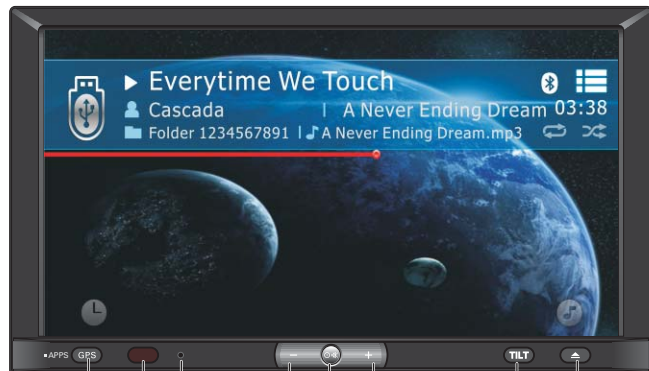


4. Tap to stop



INTRODUCTIONS

Overview the unit



Press: GPS/Nav switch
 Hold: After connecting the Mirror box,
 Press and hold to access Apps

Remote sensor

Reset

Volume - Volume +

Hold: Power
 Press: Mute

TILT Eject
 Adjust position



Source Switch

Audio Control

Media Playback Control

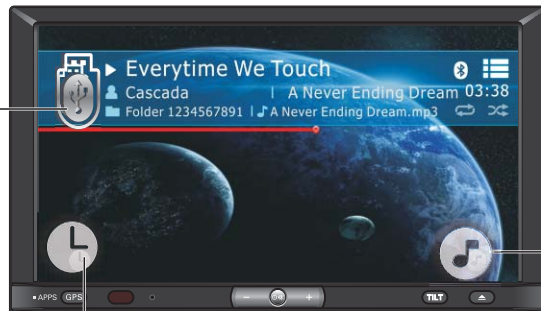
Front & Rear Zone switch

Nakamichi

INTRODUCTIONS

Basic operations

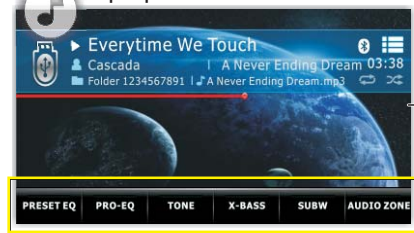
Access to HOME



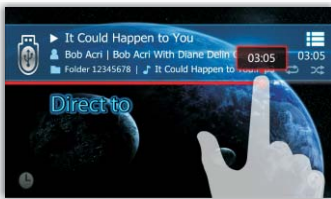
Access to CLOCK / WIDGETS



Pop up the AUDIO CONTROL



Direct to PLAYBACK TIME



Swipe for DRAG TO



Swipe left/right for UP/DOWN



Rotate for VOLUME adjust



Tap center to MUTE



AV MEDIA

Listening to the radio

Swipe left/right AUTO SEEK



Tap MANUAL SEEK



Tap BAND to change to FM or AM



PRESET LIST/
TUNER FUNCTION

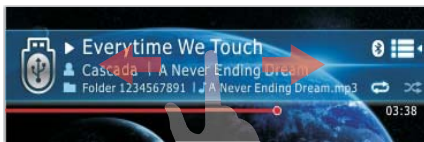


AV MEDIA

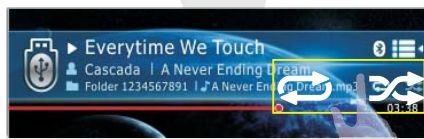
Playing the music

Swipe drag to
PLAYBACK TIME

Tap direct go to
PLAYBACK TIME

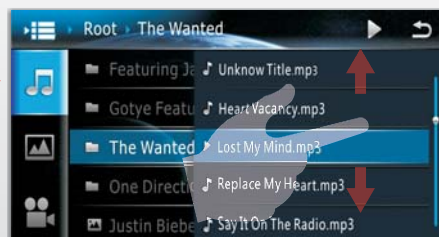
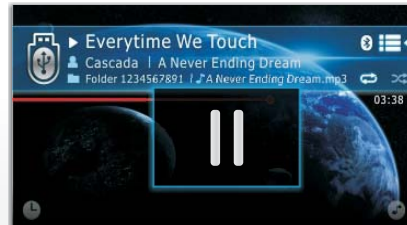
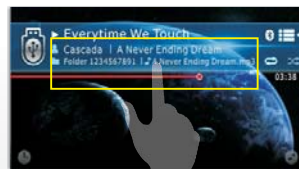


Swipe UP/DOWN



Tap REPEAT / RANDOM

Tap PLAY / PAUSE



QUICK BROWSER

Operation steps:

TIPS

1. Connect the desire playback device(USB/SD/iPod) to the USB or SD socket.
2. Access to HOME, then tap the desire playback device(USB/SD/iPod).
3. Playback starts.

AV MEDIA

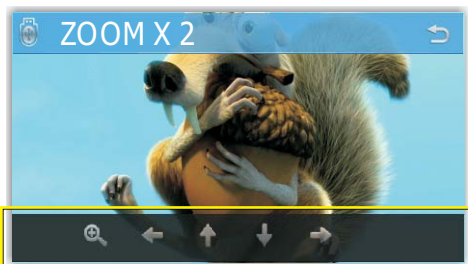
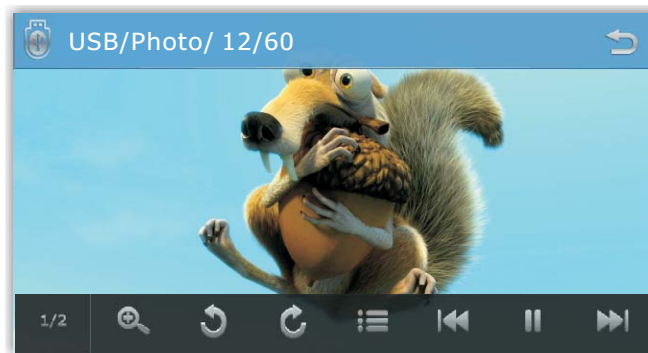
Enjoying the movie



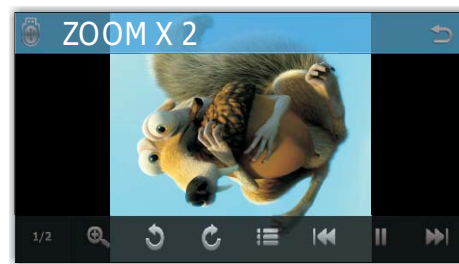
1/2 2/2	Change function bar
5.1CH 4.1CH	5.1CH & 4.1CH selection
	Select the audio type. (For DVD-VR:Select the audio channel)
	Subtitle type.
	Top Menu or Browser
	Previous, Pause / Play, Next
	Audio Settings
4:3 16:9	Select aspect ratio
	Brightness
	Contrast
	Saturation
	Repeat playback mode
	Zoom the video & photo
PBC	PBC on/off (VCD only)

AV MEDIA

Viewing the photo



When zoom x2,x4,x8 will pop up the arrow button to move the photo.



Rotate function only can support for original size photo.

	Rotate left
	Rotate right
	Move left the zooming frame
	Move up the zooming frame
	Move down the zooming frame
	Move right the zooming frame

AV MEDIA

Sharing your iPod / iPhone

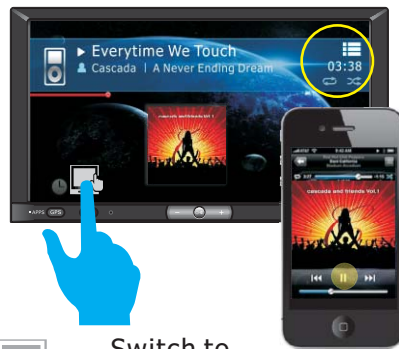
iPod/iPhone music playback

Head unit control mode



Switch to iPod/iPhone Mode

iPod/iPhone control mode



Switch to Head Unit Mode

iPod touch / iPhone video playback



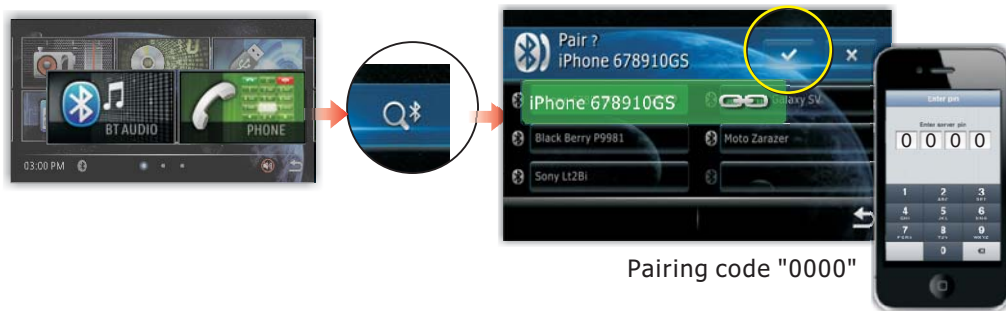
Remark:

AV-IN and iPod Audio / Video should be sharing in AV-IN jack, iPod / iPhone Audio / Video cable is not included in this packing.

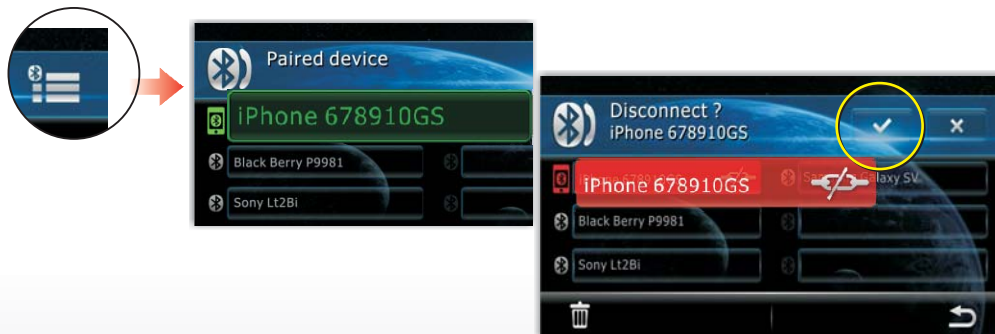
BLUETOOTH

Using bluetooth

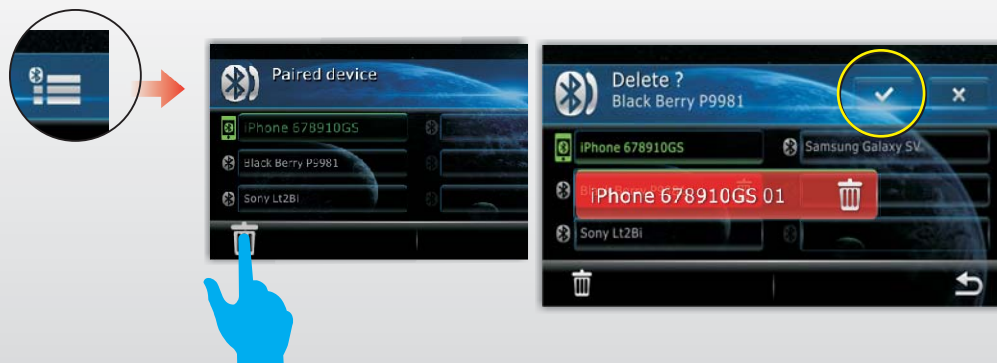
How to pair & connect device ?



How to disconnect ?



How to delete ?



2.ZONE

Rear entertainment zone

Rear entertainment zone settings

Tap 2 ZONE



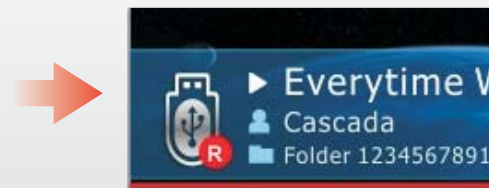
Turn on the 2 ZONE mode



Select REAR ZONE playback device.



Rear Zone mode is USB

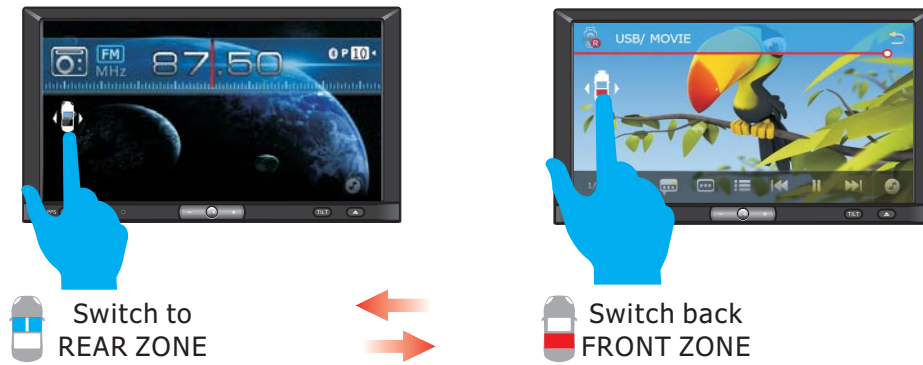




2 ZONE

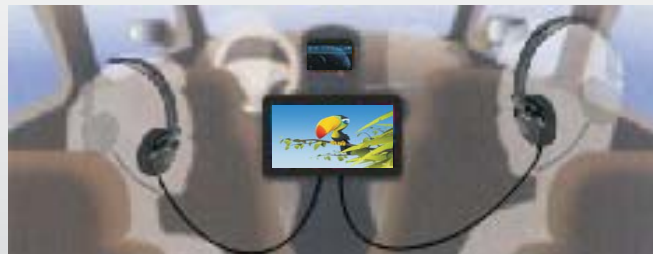
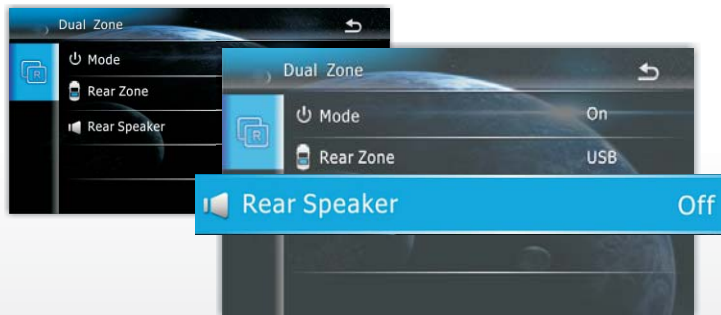
Rear entertainment zone

Switching between FRONT & REAR ZONE for operation



Off Rear speaker output

Rear audio output is through rear monitor audio system



When 2 zone mode is on, 5.1CH is not available.

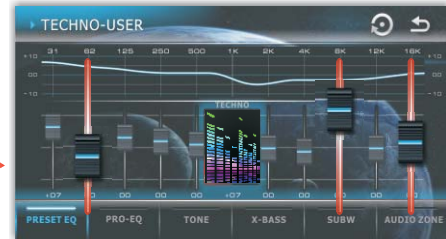
AUDIO ADJUSTMENT

Equalizer

10 Preset EQUALIZER



Preset EQ(USER)



🔗 Access to user preset EQ mode



↺ Resume to factory default value

11 Band professional EQ



3 Band Tone control



X-BASS Enhance



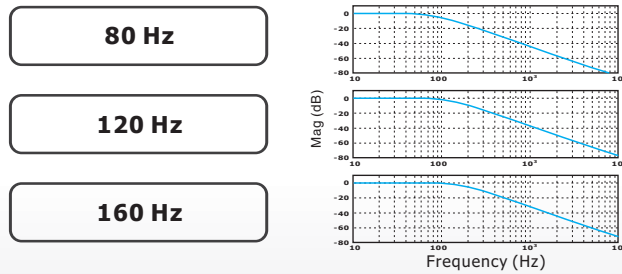
AUDIO ADJUSTMENT

Sub-woofer

SUB-WOOFER settings



Low Pass Filter Transfer Function



AUDIO ADJUSTMENT

Speaker

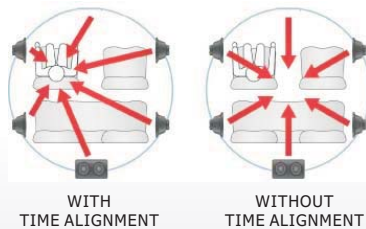
Audio Zone

7 preset listening zone to fit with perfect listening position



Custom Made Time Alignment

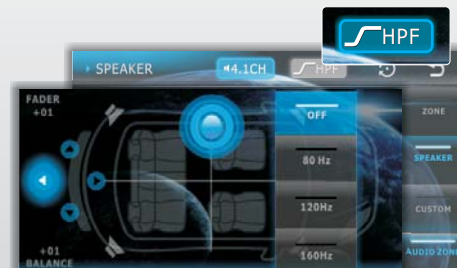
Precisely adjust each speaker including, Sub-Woofer speaker output timing according to its distance from the listening position



Adjust fader & balance to get the perfect sound.



Adjust the High Pass Filter range:
80 / 120 / 160Hz



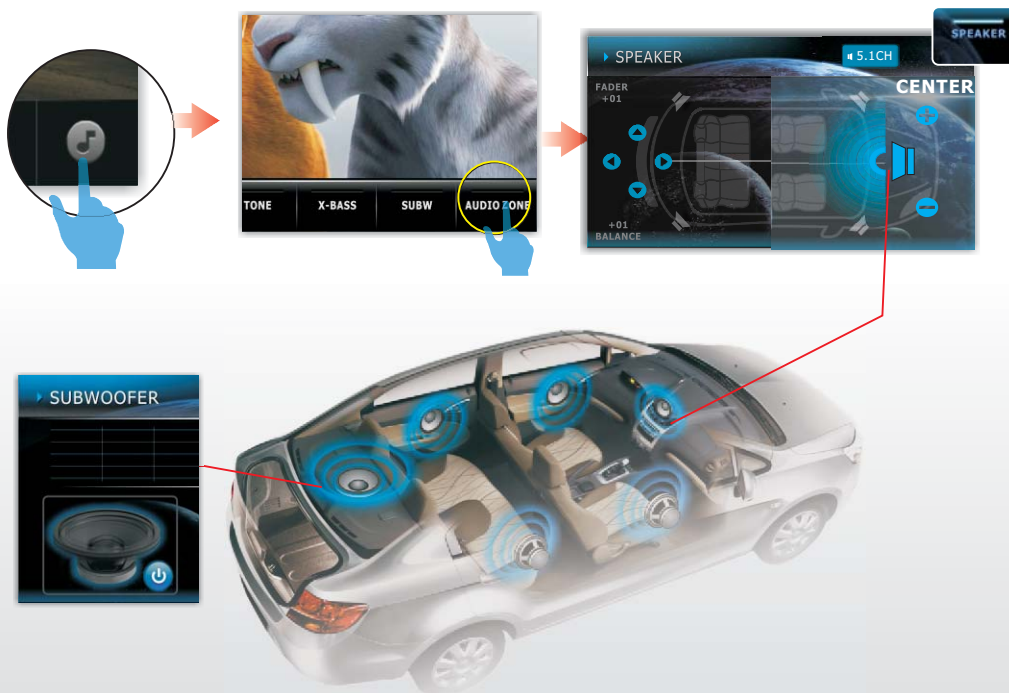
AUDIO ADJUSTMENT

5.1 Audio playback

How to activate 5.1 audio mode



How to adjust 5.1 audio speaker setting



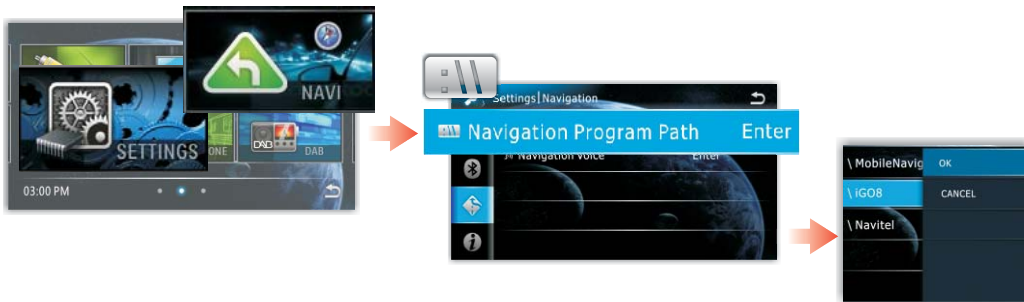
- TIPS**
1. Please read details of recommended 5.1 audio speaker connection in the manual of installation / connection (QSG).
 2. XBASS & ZONE function is not available when 5.1 audio playback mode is switch on.



NAVIGATION

Navigation settings

Set the navigation program path



Navigation Voice Output

Select the voice output from the desire speaker location



Navigation Voice scale Level

Adjust the voice level scale between playback sound



REFERENCE

Specifications

TFT Monitor section

Screen Size	:6.8 inches
Display Resolution	:800x480 dots
Contrast Ratio	:500

Disc player section

Disc System	:DVD/CD/VCD
Disc Diameter	:12cm
Frequency Response	:20Hz - 20kHz
Signal/Noise Ratio	:>75 dB
Total Harmonic Distortion	:Less than 0.3%
Channel Separation	:>55 dB
Video Signal Format	:NTSC/PAL
Video Output	:1+/-0.2V p-p

USB interface section

USB Standard	:USB 2.0 Full Speed
File System	:FAT 16/32
Maximum Current	:DC 5V= 1A
D/A Converter	:24Bit
Video Decoder	:MPEG1/MPEG2
Audio Decoder	:MP3

Memory Card section

Memory Cards	:SD/SDHC
Maximum Capacity	:32G

Bluetooth section

Communication System	: Bluetooth Standard version 2.0
Output	: Bluetooth Standard Power Class 2
Maximum Communication Range	: Approx. 5meters
Frequency Band	: 2.4 GHz
Compatible Bluetooth Profiles	: HFP/HSP/A2DP/AVRCP
Supported Codecs	: SBC (Sub Band Codec)

Radio section

Frequency FM range	: 87.5 - 108.0 MHz
Frequency AM(MW) range	: 522-1620 KHz
Usable sensitivity	: 2 uV (FM) : 80 uV (AM)(MW)

Video section

Color System of External Video Input	: NTSC/PAL/SCEAM
External Video Input (RCA/3.5m Jack)	: 1 Vp-p /75Ω

Audio section

Maximum Power	: 50Wx4
Continuous Power Output (RMS)	: 22 Wx4
Preout Level (V)	: 5 V/10kΩ
Preout Impedance	: ≤ 600Ω
Speaker Impedance	: 4-8 Ω
External Audio Input Level (RCA)	: 1 V/10KΩ
External Audio Input Level (3.5mm Jack)	: 600mv/10KΩ (<1%THD)

General

Operating Voltage	: 14.4V(10.5-16 V)
Dimension(WxHxD)	: 178x102x172mm
Operational Temperature Range	: -10°C-+60°C
Storage Temperature Range	: -20°C-+80°C
Weight	: 2.49 kg



Design and specifications are subject to change
without notice

© 2013 Nakamichi
www.nakamichicaraudio.com

