

Service Manual



CONTENTS

| | |
|-------------------------------|-------------|
| Technical specification | 1-1 |
| Main board | |
| Circuit diagram | 2-1... 2-4 |
| Layout diagram | 2-5... 2-6 |
| Panel board | |
| Circuit diagram | 3-1 ... 3-2 |
| Layout diagram | 3-3 ... 3-4 |
| Exploded view diagram | 4-1 |
| Instruction Manual | page14-31 |

TFT Monitor section

Screen Size : 7 inches
 Display Resolution : 800x480 dots
 Contrast Ratio : 500

Disc player section

Disc System : DVD/CD/VCD
 Disc Diameter : 12cm
 Frequency Response : 20Hz - 20kHz
 Signal/Noise Ratio : >75 dB
 Total Harmonic Distortion : Less than 0.3%
 Channel Separation : >50 dB
 Video Signal Format : NTSC/PAL
 Video Output : 1 +/- 0.2V p-p

USB interface section

USB Standard : USB 2.0 Full Speed
 File System : FAT 16/32
 Maximum Current : DC 5V=1A
 D/A Converter : 24Bit
 Video Decoder : MPEG1/MPEG2
 Audio Decoder : MP3

Memory Card section

Memory Cards : SD/SDHC
 Maximum Capacity : 32G

Bluetooth section

Communication System : Bluetooth Standard version 2.0
 Output : Bluetooth Standard Power Class 2
 Maximum Communication Range : Approx. 5meters
 Frequency Band : 2.4 GHz
 Compatible Bluetooth Profiles : HFP/HSP/A2DP/AVRCP
 Supported Codecs : SBC (Sub Band Codec)

Radio section

Frequency FM range : 87.5 - 108.0 MHz
 Frequency AM(MW) range : 522-1620 KHz
 Usable sensitivity : 2 uV (FM)
 : 80 uV (AM)(MW)

Video section

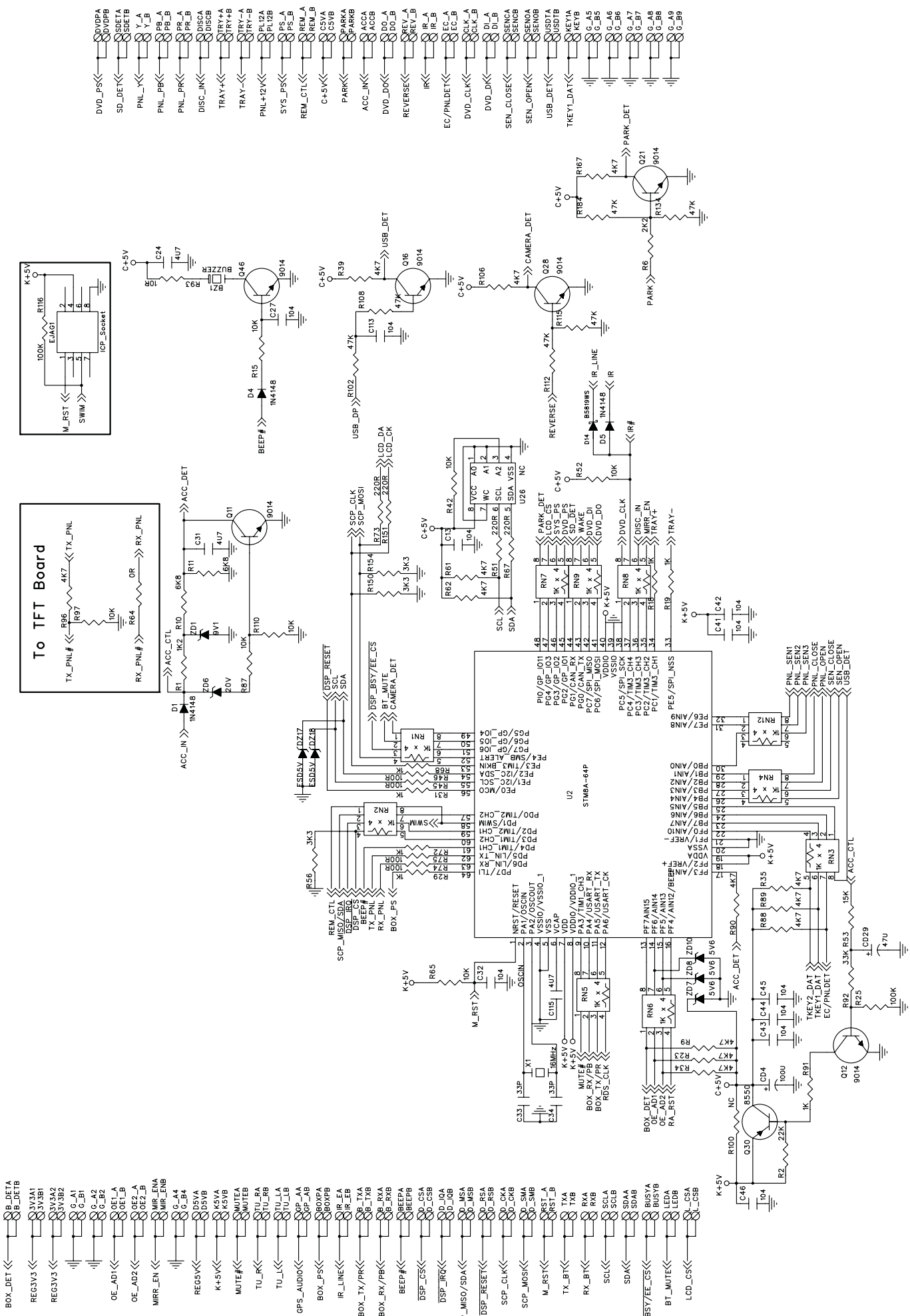
Color System of External Video Input : NTSC/PAL/SCEAM
 External Video Input (RCA/3.5m Jack) : 1 Vp-p /75Ω

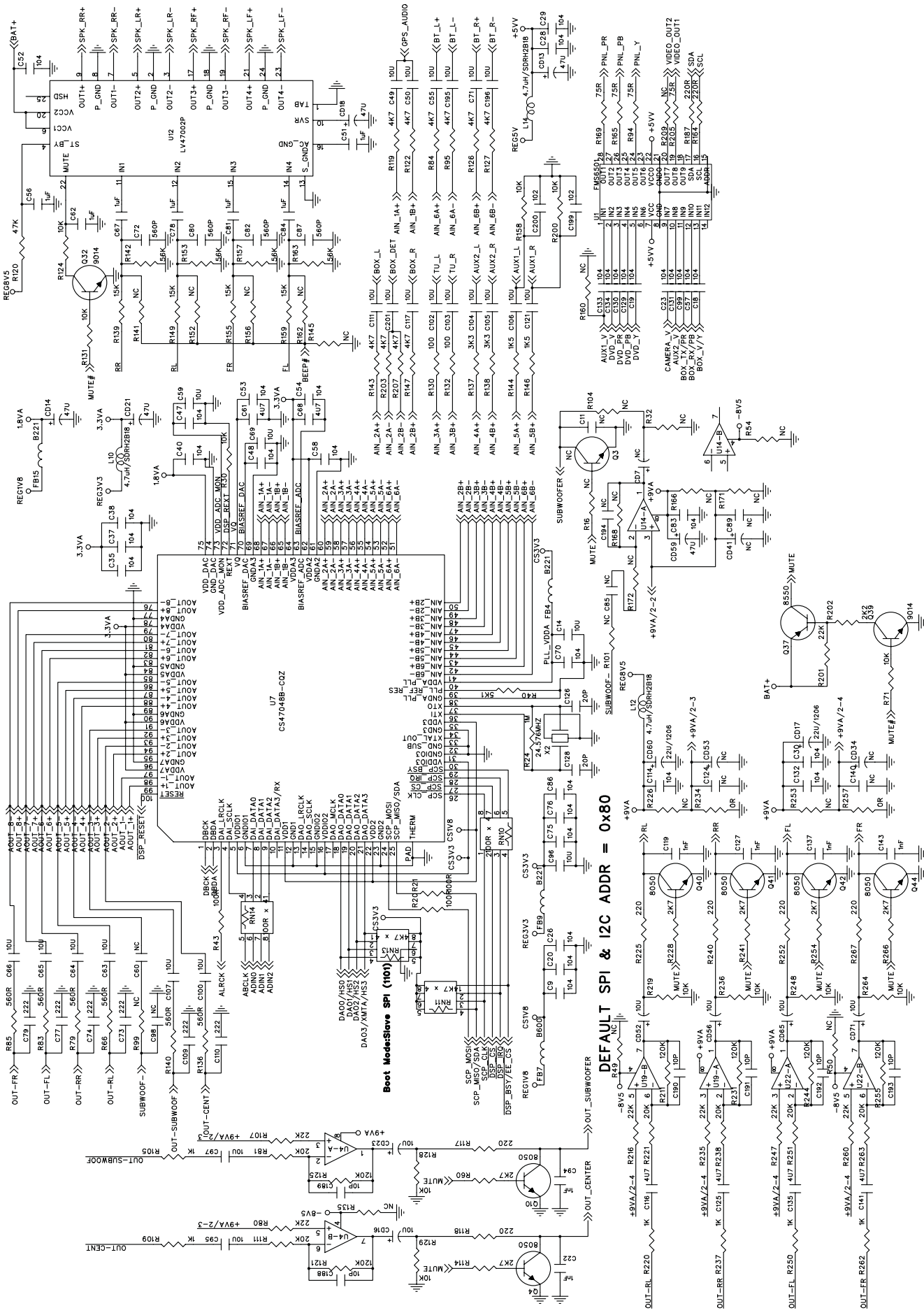
Audio section

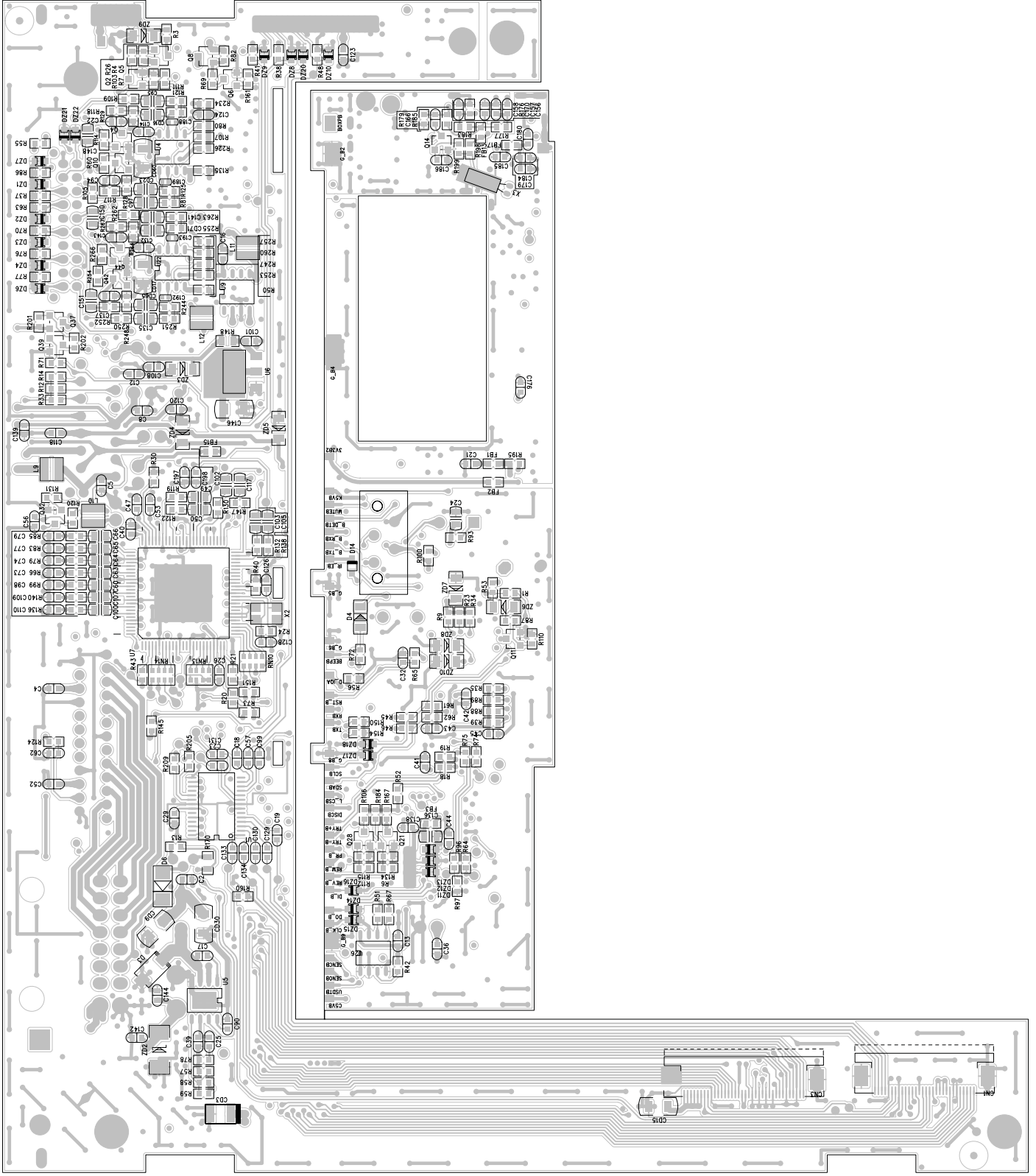
Maximum Power : 50Wx4
 Continuous Power Output (RMS) : 22 Wx4
 Preout Level (V) : 4 V/10kΩ
 Preout Impedance : ≤ 600Ω
 Speaker Impedance : 4-8 Ω
 External Audio Input Level (RCA) : 1 V/10KΩ
 External Audio Input Level (3.5mm Jack) : 600mv/10KΩ

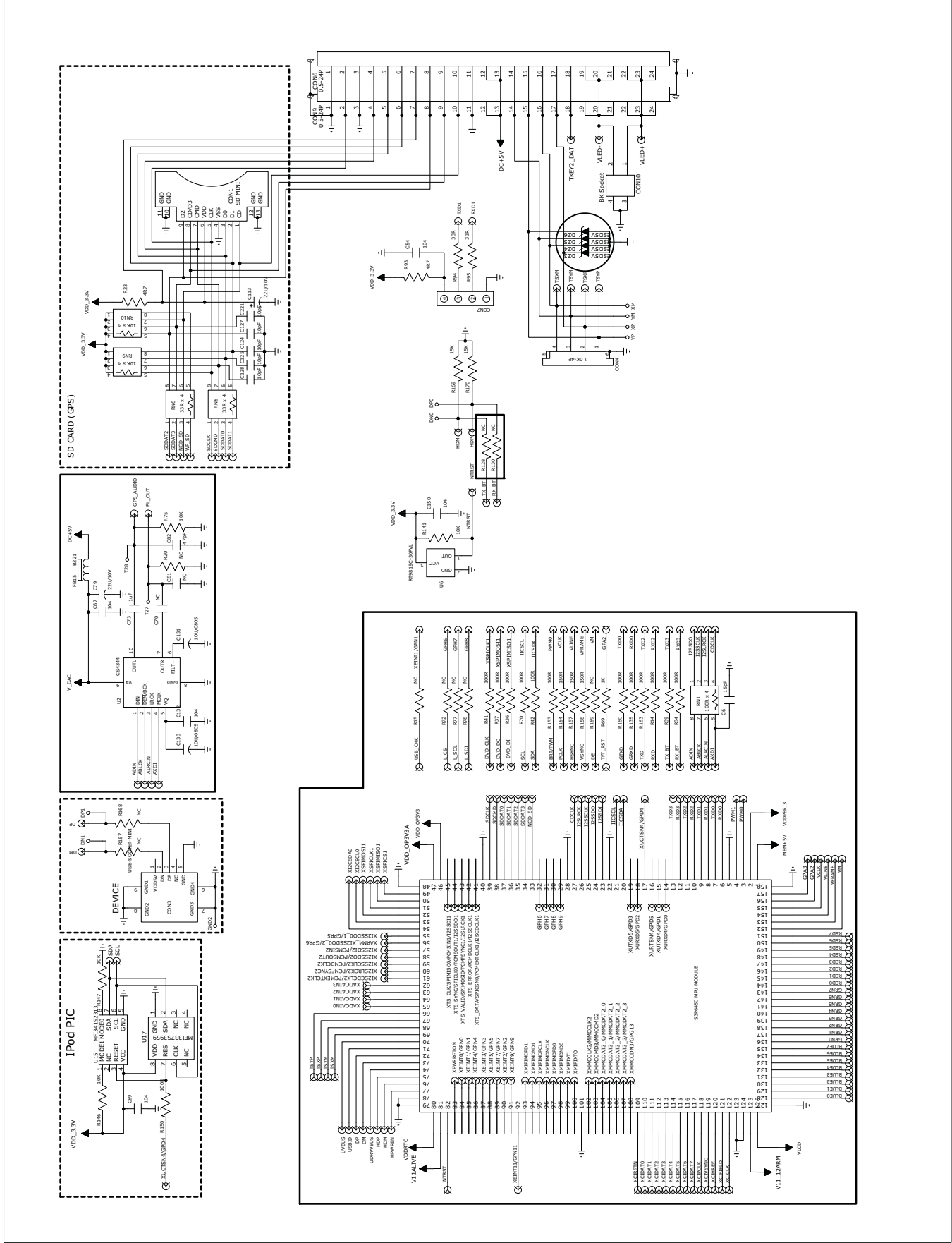
General

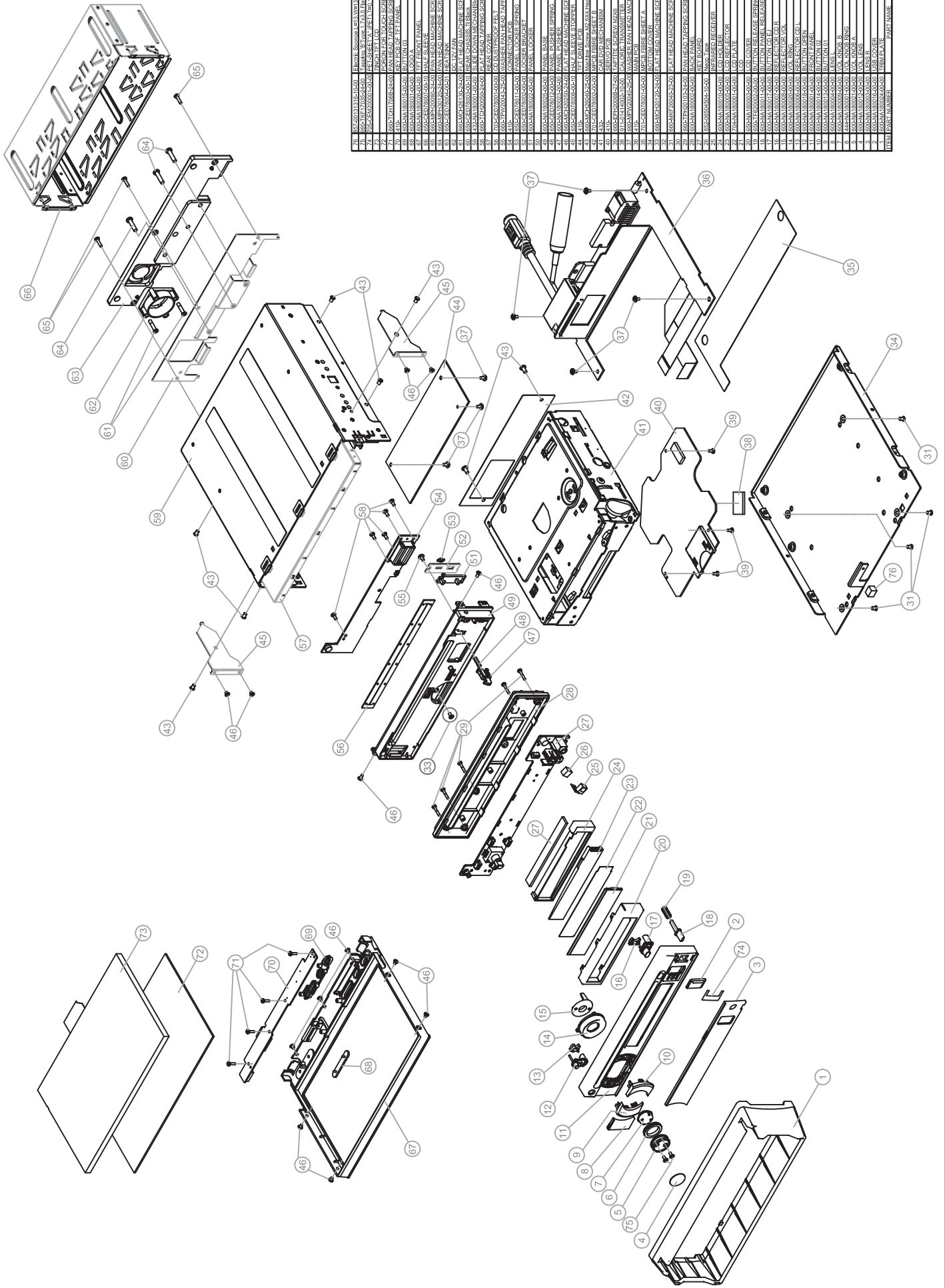
Operating Voltage : 14.4V(10.5-16 V)
 Dimension(WxHxD) : 188x58x218.7mm
 Operational Temperature Range : -10°C-+60°C
 Storage Temperature Range : -20°C-+80°C
 Weight : 2303g











| ITEM | PART NUMBER | PART NAME | QTY | REMARKS |
|------|----------------|-------------|-----|---------|
| 1 | 602A0131310000 | FRONT PANEL | 1 | |
| 2 | 602A0131310000 | FRONT PANEL | 1 | |
| 3 | 602A0131310000 | FRONT PANEL | 1 | |
| 4 | 602A0131310000 | FRONT PANEL | 1 | |
| 5 | 602A0131310000 | FRONT PANEL | 1 | |
| 6 | 602A0131310000 | FRONT PANEL | 1 | |
| 7 | 602A0131310000 | FRONT PANEL | 1 | |
| 8 | 602A0131310000 | FRONT PANEL | 1 | |
| 9 | 602A0131310000 | FRONT PANEL | 1 | |
| 10 | 602A0131310000 | FRONT PANEL | 1 | |
| 11 | 602A0131310000 | FRONT PANEL | 1 | |
| 12 | 602A0131310000 | FRONT PANEL | 1 | |
| 13 | 602A0131310000 | FRONT PANEL | 1 | |
| 14 | 602A0131310000 | FRONT PANEL | 1 | |
| 15 | 602A0131310000 | FRONT PANEL | 1 | |
| 16 | 602A0131310000 | FRONT PANEL | 1 | |
| 17 | 602A0131310000 | FRONT PANEL | 1 | |
| 18 | 602A0131310000 | FRONT PANEL | 1 | |
| 19 | 602A0131310000 | FRONT PANEL | 1 | |
| 20 | 602A0131310000 | FRONT PANEL | 1 | |
| 21 | 602A0131310000 | FRONT PANEL | 1 | |
| 22 | 602A0131310000 | FRONT PANEL | 1 | |
| 23 | 602A0131310000 | FRONT PANEL | 1 | |
| 24 | 602A0131310000 | FRONT PANEL | 1 | |
| 25 | 602A0131310000 | FRONT PANEL | 1 | |
| 26 | 602A0131310000 | FRONT PANEL | 1 | |
| 27 | 602A0131310000 | FRONT PANEL | 1 | |
| 28 | 602A0131310000 | FRONT PANEL | 1 | |
| 29 | 602A0131310000 | FRONT PANEL | 1 | |
| 30 | 602A0131310000 | FRONT PANEL | 1 | |
| 31 | 602A0131310000 | FRONT PANEL | 1 | |
| 32 | 602A0131310000 | FRONT PANEL | 1 | |
| 33 | 602A0131310000 | FRONT PANEL | 1 | |
| 34 | 602A0131310000 | FRONT PANEL | 1 | |
| 35 | 602A0131310000 | FRONT PANEL | 1 | |
| 36 | 602A0131310000 | FRONT PANEL | 1 | |
| 37 | 602A0131310000 | FRONT PANEL | 1 | |
| 38 | 602A0131310000 | FRONT PANEL | 1 | |
| 39 | 602A0131310000 | FRONT PANEL | 1 | |
| 40 | 602A0131310000 | FRONT PANEL | 1 | |
| 41 | 602A0131310000 | FRONT PANEL | 1 | |
| 42 | 602A0131310000 | FRONT PANEL | 1 | |
| 43 | 602A0131310000 | FRONT PANEL | 1 | |
| 44 | 602A0131310000 | FRONT PANEL | 1 | |
| 45 | 602A0131310000 | FRONT PANEL | 1 | |
| 46 | 602A0131310000 | FRONT PANEL | 1 | |
| 47 | 602A0131310000 | FRONT PANEL | 1 | |
| 48 | 602A0131310000 | FRONT PANEL | 1 | |
| 49 | 602A0131310000 | FRONT PANEL | 1 | |
| 50 | 602A0131310000 | FRONT PANEL | 1 | |
| 51 | 602A0131310000 | FRONT PANEL | 1 | |
| 52 | 602A0131310000 | FRONT PANEL | 1 | |
| 53 | 602A0131310000 | FRONT PANEL | 1 | |
| 54 | 602A0131310000 | FRONT PANEL | 1 | |
| 55 | 602A0131310000 | FRONT PANEL | 1 | |
| 56 | 602A0131310000 | FRONT PANEL | 1 | |
| 57 | 602A0131310000 | FRONT PANEL | 1 | |
| 58 | 602A0131310000 | FRONT PANEL | 1 | |
| 59 | 602A0131310000 | FRONT PANEL | 1 | |
| 60 | 602A0131310000 | FRONT PANEL | 1 | |
| 61 | 602A0131310000 | FRONT PANEL | 1 | |
| 62 | 602A0131310000 | FRONT PANEL | 1 | |
| 63 | 602A0131310000 | FRONT PANEL | 1 | |
| 64 | 602A0131310000 | FRONT PANEL | 1 | |
| 65 | 602A0131310000 | FRONT PANEL | 1 | |
| 66 | 602A0131310000 | FRONT PANEL | 1 | |
| 67 | 602A0131310000 | FRONT PANEL | 1 | |
| 68 | 602A0131310000 | FRONT PANEL | 1 | |
| 69 | 602A0131310000 | FRONT PANEL | 1 | |
| 70 | 602A0131310000 | FRONT PANEL | 1 | |
| 71 | 602A0131310000 | FRONT PANEL | 1 | |
| 72 | 602A0131310000 | FRONT PANEL | 1 | |
| 73 | 602A0131310000 | FRONT PANEL | 1 | |
| 74 | 602A0131310000 | FRONT PANEL | 1 | |
| 75 | 602A0131310000 | FRONT PANEL | 1 | |
| 76 | 602A0131310000 | FRONT PANEL | 1 | |



NA1850 AV Media Receiver User Manual



Enjoy the Lifestyle of In-Car Entertainment

CONTENTS

Contents

Thank you for purchasing a Nakamichi products.

Please read all instructions carefully before operation, to ensure your complete understanding and to obtain the best possible performance from the unit.

INTRODUCTIONS

| | |
|---------------------------------|---|
| View demo before first use..... | 2 |
| Overview the unit..... | 3 |
| Basic operations..... | 4 |

AV MEDIA

| | |
|-------------------------------|---|
| Listening to the radio..... | 5 |
| Playing the music..... | 6 |
| Enjoying the movie..... | 7 |
| Viewing the photo..... | 8 |
| Sharing your iPod/iPhone..... | 9 |

BLUETOOTH

| | |
|----------------------|----|
| Using bluetooth..... | 10 |
|----------------------|----|

AUDIO ADJUSTMENT

| | |
|-------------------------|----|
| Equalizer..... | 11 |
| Subwoofer..... | 12 |
| Speaker..... | 13 |
| Audio zone..... | 13 |
| Time alignment..... | 13 |
| Fader/Balance..... | 13 |
| 5.1 Audio playback..... | 14 |

NAVIGATION

| | |
|--------------------------|----|
| Navigation settings..... | 15 |
|--------------------------|----|

REFERENCE

| | |
|---------------------|----|
| Specifications..... | 16 |
|---------------------|----|

INTRODUCTIONS

View demo before first use

Please preview those advance features of this unit through the DEMO mode on this unit.

1. Access to general settings.



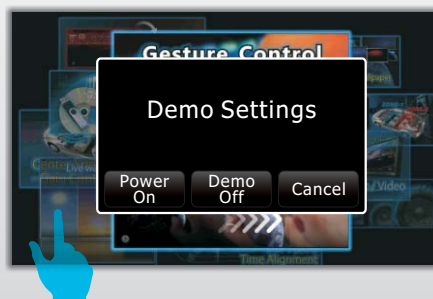
2. Turn on the demo mode.



3. Press & hold this button to power off the unit, demo will be play automatically.

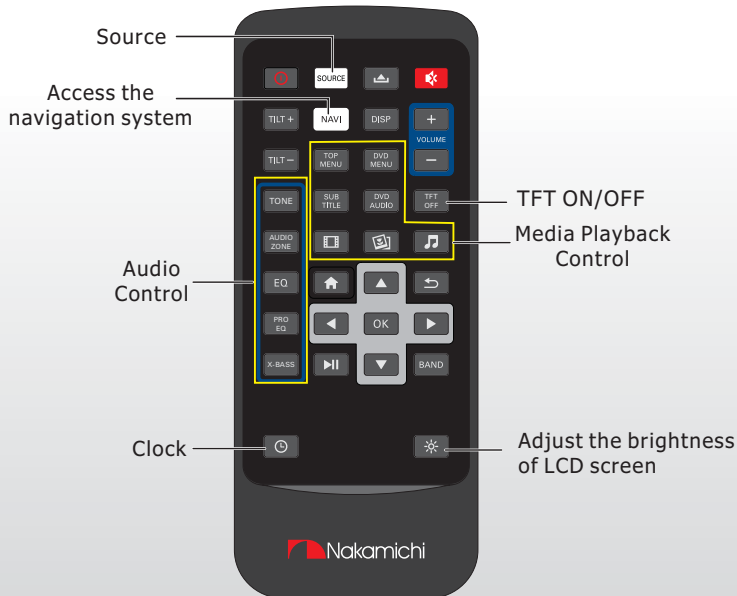


4. Tap to stop



INTRODUCTIONS

Overview the unit



INTRODUCTIONS

Basic operations

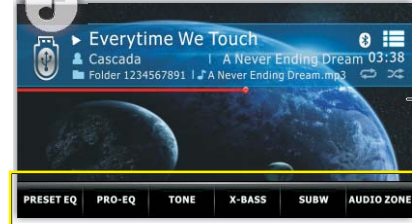
Access to HOME



Access to CLOCK / WIDGETS



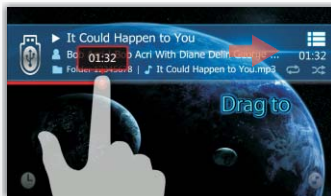
Pop up the AUDIO CONTROL



Direct to PLAYBACK TIME



Swipe for DRAG TO



Swipe left/right for UP/DOWN



Rotate for VOLUME adjust



Tap center to MUTE



AV MEDIA

Listening to the radio

Swipe left/right AUTO SEEK



Tap MANUAL SEEK



Tap BAND to change to FM or AM



PRESET LIST/
TUNER FUNCTION



AV MEDIA

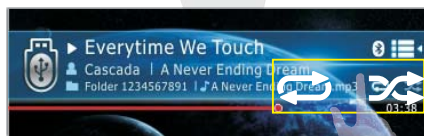
Playing the music

Swipe drag to
PLAYBACK TIME

Tap direct go to
PLAYBACK TIME

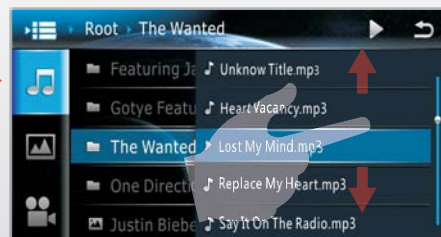
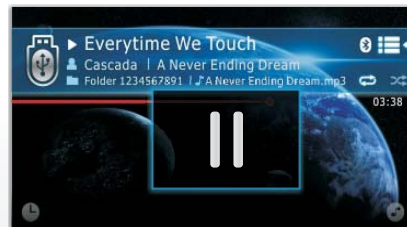


Swipe UP/DOWN



Tap REPEAT / RANDOM

Tap PLAY / PAUSE



QUICK BROWSER

Operation steps:

TIPS

1. Connect the desire playback device(USB/SD/iPod) to the USB or SD socket.
2. Access to HOME, then tap the desire playback device(USB/SD/iPod).
3. Playback starts.

AV MEDIA

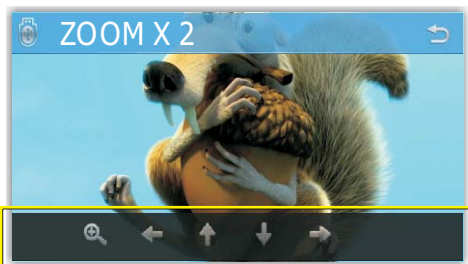
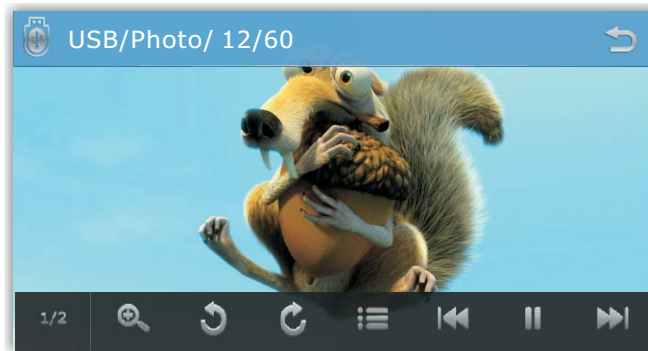
Enjoying the movie



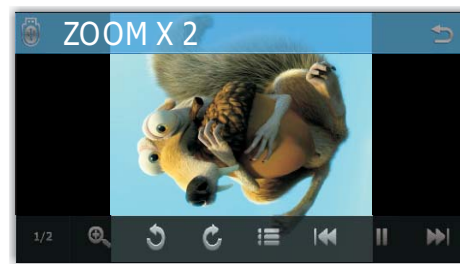
| | |
|----------------|--|
| 1/2 2/2 | Change function bar |
| 5.1CH 4.1CH | 5.1CH & 4.1CH selection |
| | Select the audio type. (For DVD-VR:Select the audio channel) |
| | Subtitle type. |
| | Top Menu or Browser |
| | Previous, Pause /Play, Next |
| | Audio Settings |
| 4:3 16:9 | Select aspect ratio |
| | Brightness |
| | Contrast |
| | Saturation |
| | Repeat playback mode |
| | Zoom the video & photo |
| PBC | PBC on/off (VCD only) |
| | |

AV MEDIA







Viewing the photo



When zoom x2,x4,x8 will pop up the arrow button to move the photo.



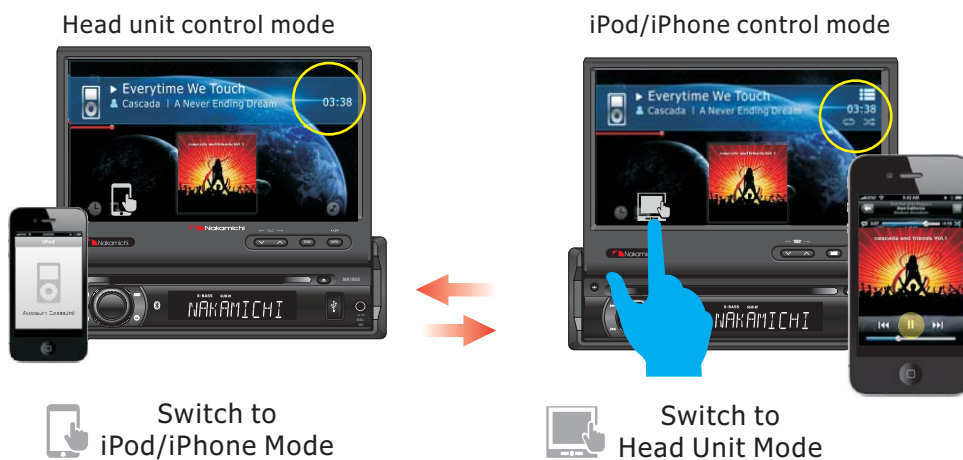
Rotate function only can support for original size photo.

| | |
|---|------------------------------|
|  | Rotate left |
|  | Rotate right |
|  | Move left the zooming frame |
|  | Move up the zooming frame |
|  | Move down the zooming frame |
|  | Move right the zooming frame |

AV MEDIA

Sharing your iPod / iPhone

iPod/iPhone music playback



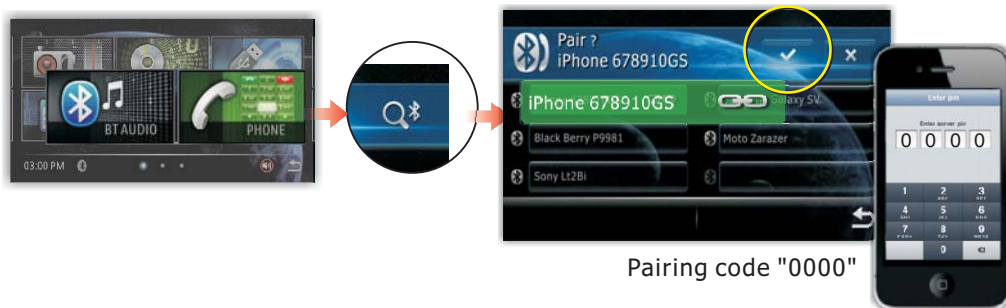
iPod touch / iPhone video playback



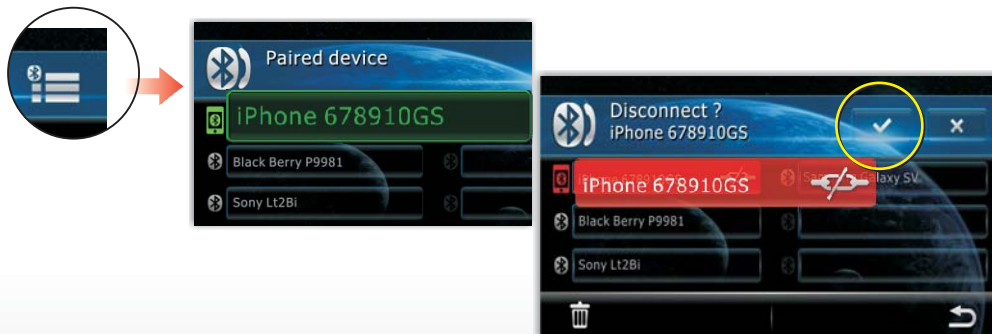
BLUETOOTH

Using bluetooth

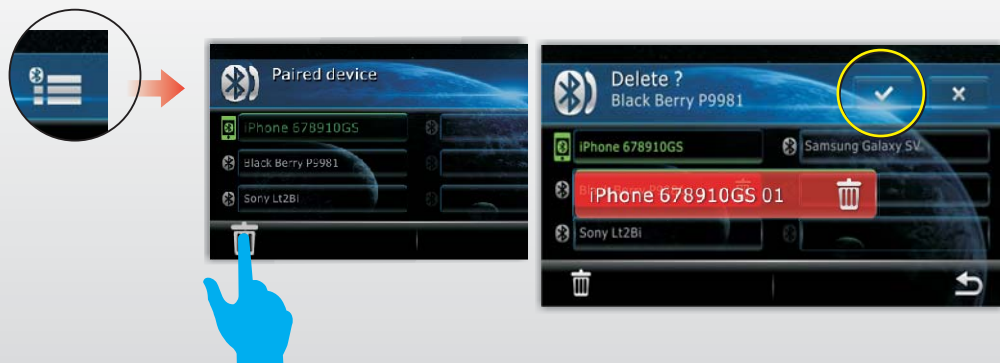
How to pair & connect device ?



How to disconnect ?



How to delete ?



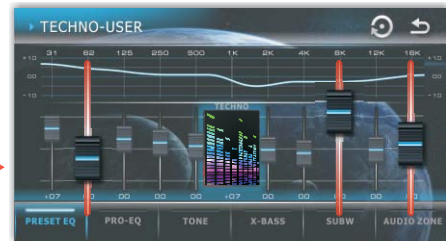
AUDIO ADJUSTMENT

Equalizer

10 Preset EQUALIZER



Preset EQ(USER)



TIPS Access to user preset EQ mode

Resume to factory default value

11 Band professional EQ



3 Band Tone control



X-BASS Enhance



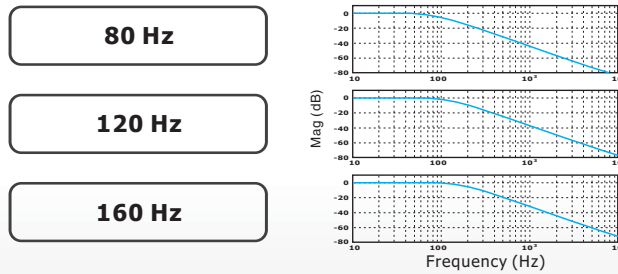
AUDIO ADJUSTMENT

Sub-woofer

SUB-WOOFER settings



Low Pass Filter Transfer Function



AUDIO ADJUSTMENT

Speaker

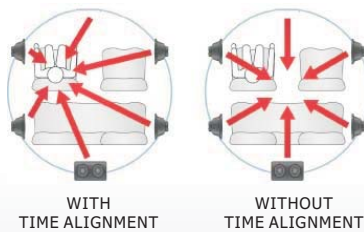
Audio Zone

7 preset listening zone to fit with perfect listening position



Custom Made Time Alignment

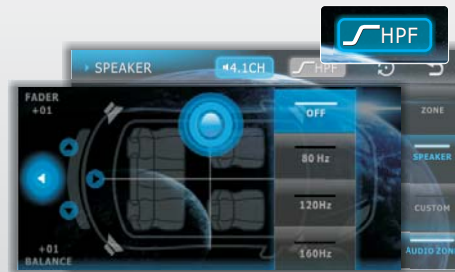
Precisely adjust each speaker including, Sub-Woofer speaker output timing according to its distance from the listening position



Adjust fader & balance to get the perfect sound.



Adjust the High Pass Filter range: 80 / 120 / 160Hz



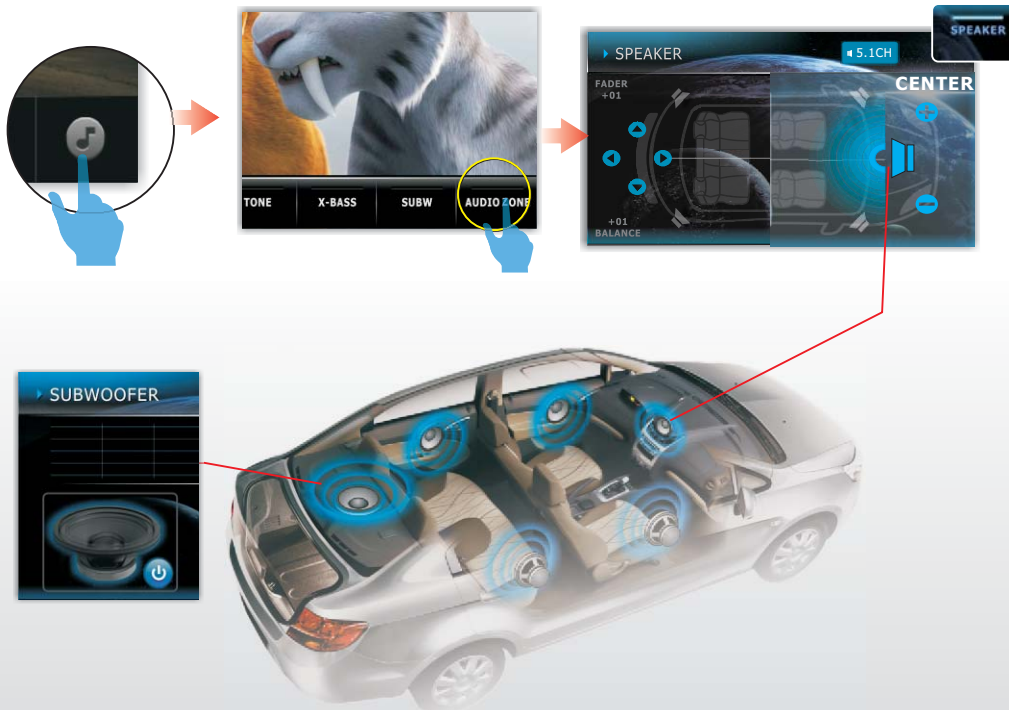
AUDIO ADJUSTMENT

5.1 Audio playback

How to activate 5.1 audio mode



How to adjust 4.1 audio speaker setting



- TIPS**
1. Please read details of recommended 5.1 audio speaker connection in the manual of installation / connection (QSG).
 2. XBASS & ZONE function is not available when 5.1 audio playback mode is switch on.

NAVIGATION

Navigation settings

Set the navigation program path



Navigation Voice Output

Select the voice output from the desired speaker location



Navigation Voice scale Level

Adjust the voice level scale between playback sound



REFERENCE

Specifications

TFT Monitor section

| | |
|--------------------|---------------|
| Screen Size | :7 inches |
| Display Resolution | :800x480 dots |
| Contrast Ratio | :500 |

Disc player section

| | |
|---------------------------|-----------------|
| Disc System | :DVD/CD/VCD |
| Disc Diameter | :12cm |
| Frequency Response | :20Hz - 20kHz |
| Signal/Noise Ratio | :>75 dB |
| Total Harmonic Distortion | :Less than 0.3% |
| Channel Separation | :>50 dB |
| Video Signal Format | :NTSC/PAL |
| Video Output | :1+/-0.2V p-p |

USB interface section

| | |
|-----------------|---------------------|
| USB Standard | :USB 2.0 Full Speed |
| File System | :FAT 16/32 |
| Maximum Current | :DC 5V= 1A |
| D/A Converter | :24Bit |
| Video Decoder | :MPEG1/MPEG2 |
| Audio Decoder | :MP3 |

Memory Card section

| | |
|------------------|----------|
| Memory Cards | :SD/SDHC |
| Maximum Capacity | :32G |

Bluetooth section

| | |
|-------------------------------|------------------------------------|
| Communication System | : Bluetooth Standard version 2.0 |
| Output | : Bluetooth Standard Power Class 2 |
| Maximum Communication Range | : Approx. 5meters |
| Frequency Band | : 2.4 GHz |
| Compatible Bluetooth Profiles | : HFP/HSP/A2DP/AVRCP |
| Supported Codecs | : SBC (Sub Band Codec) |

Radio section

| | |
|------------------------|---------------------------------|
| Frequency FM range | : 87.5 - 108.0 MHz |
| Frequency AM(MW) range | : 522-1620 KHz |
| Usable sensitivity | : 2 uV (FM) : 80 uV (AM)(MW) |

Video section

| | |
|--------------------------------------|------------------|
| Color System of External Video Input | : NTSC/PAL/SCEAM |
| External Video Input (RCA/3.5m Jack) | : 1 Vp-p /75Ω |

Audio section

| | |
|---|--------------|
| Maximum Power | : 50Wx4 |
| Continuous Power Output (RMS) | : 22 Wx4 |
| Preout Level (V) | : 4 V/10kΩ |
| Preout Impedance | : ≤ 600Ω |
| Speaker Impedance | : 4-8 Ω |
| External Audio Input Level (RCA) | : 1 V/10KΩ |
| External Audio Input Level (3.5mm Jack) | : 600mv/10KΩ |

General

| | |
|-------------------------------|--------------------|
| Operating Voltage | : 14.4V(10.5-16 V) |
| Dimension(WxHxD) | : 188x58x218.7mm |
| Operational Temperature Range | : -10°C-+60°C |
| Storage Temperature Range | : -20°C-+80°C |
| Weight | : 2303g |



Design and specifications are subject to change
without notice

© 2013 Nakamichi
www.nakamichicaraudio.com

