

Service Manual



CONTENTS

Technical specification	1-2
Main board	
Circuit diagram	3--6
Layout diagram	7--8
Servo board	
Circuit diagram	9
Layout diagram	10--11
Panel board	
Circuit diagram	12-13
Layout diagram	14-15
Exploded view diagram	16
Instruction Manual	page17-31

REFERENCE

Specifications

TFT Monitor section

Screen Size	:6.2 inches
Display Resolution	:800x480 dots
Contrast Ratio	:500

Disc player section

Disc System	:DVD/CD/VCD
Disc Diameter	:12cm
Frequency Response	:20Hz - 20kHz
Signal/Noise Ratio	:>75 dB
Total Harmonic Distortion	:Less than 0.3%
Channel Separation	:>55 dB
Video Signal Format	:NTSC/PAL
Video Output	:1+/-0.2V p-p

USB interface section

USB Standard	:USB 2.0 Full Speed
File System	:FAT 16/32
Maximum Current	:DC 5V= 1A
D/A Converter	:24Bit
Video Decoder	:MPEG1/MPEG2
Audio Decoder	:MP3

Memory Card section

Memory Cards	:SD/SDHC
Maximum Capacity	:32G

Bluetooth section

Communication System	: Bluetooth Standard version 2.0
Output	: Bluetooth Standard Power Class 2
Maximum Communication Range	: Approx. 5meters
Frequency Band	: 2.4 GHz
Compatible Bluetooth Profiles	: HFP/HSP/A2DP/AVRCP
Supported Codecs	: SBC (Sub Band Codec)

Radio section

Frequency FM range	: 87.5 - 108.0 MHz
Frequency AM(MW) range	: 522-1620 KHz
Usable sensitivity	: 2 uV (FM) : 80 uV (AM)(MW)

Video section

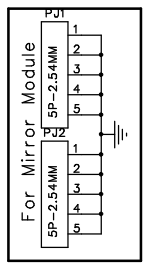
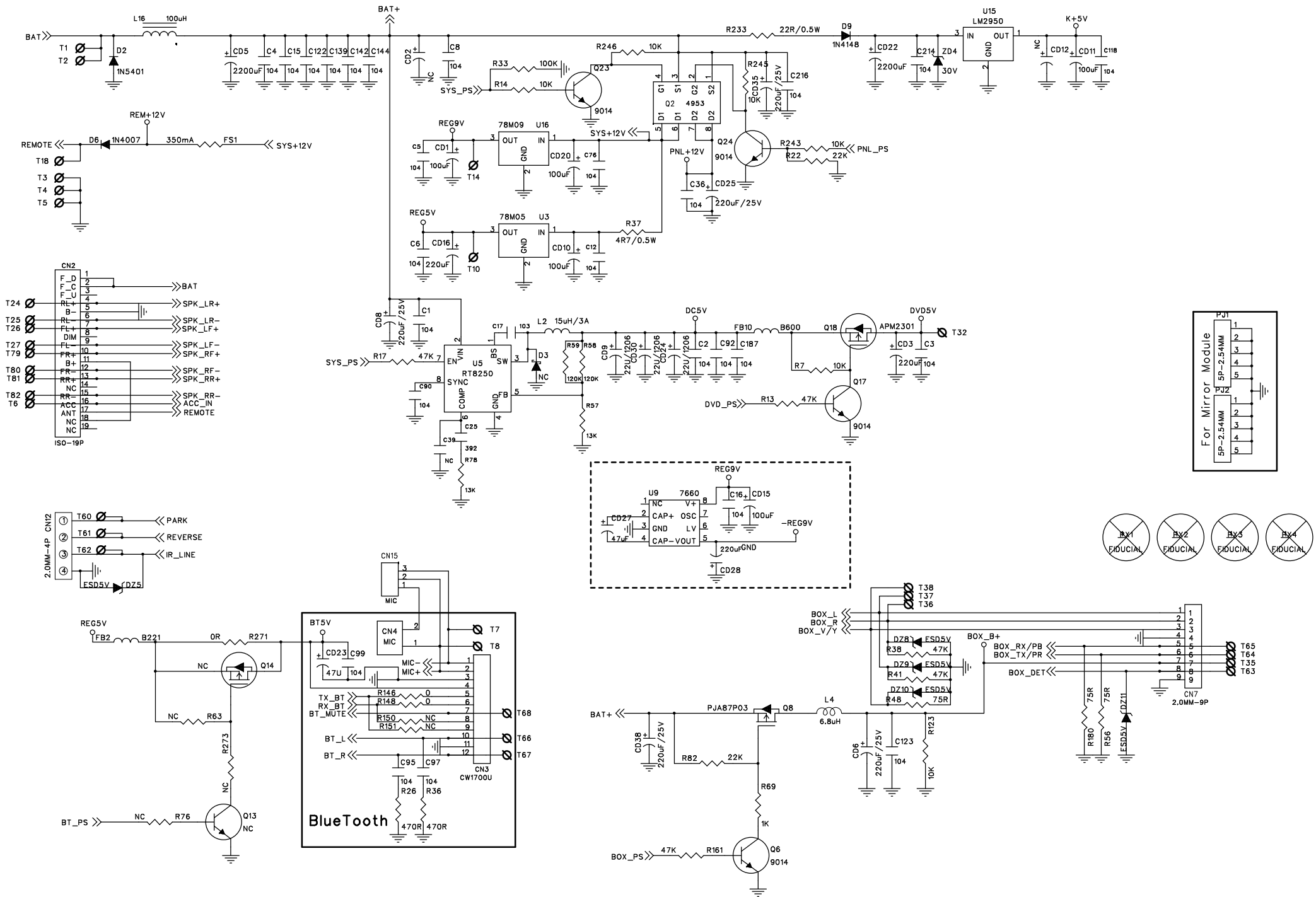
Color System of External Video Input	: NTSC/PAL/SCEAM
External Video Input (RCA/3.5m Jack)	: 1 Vp-p /75Ω

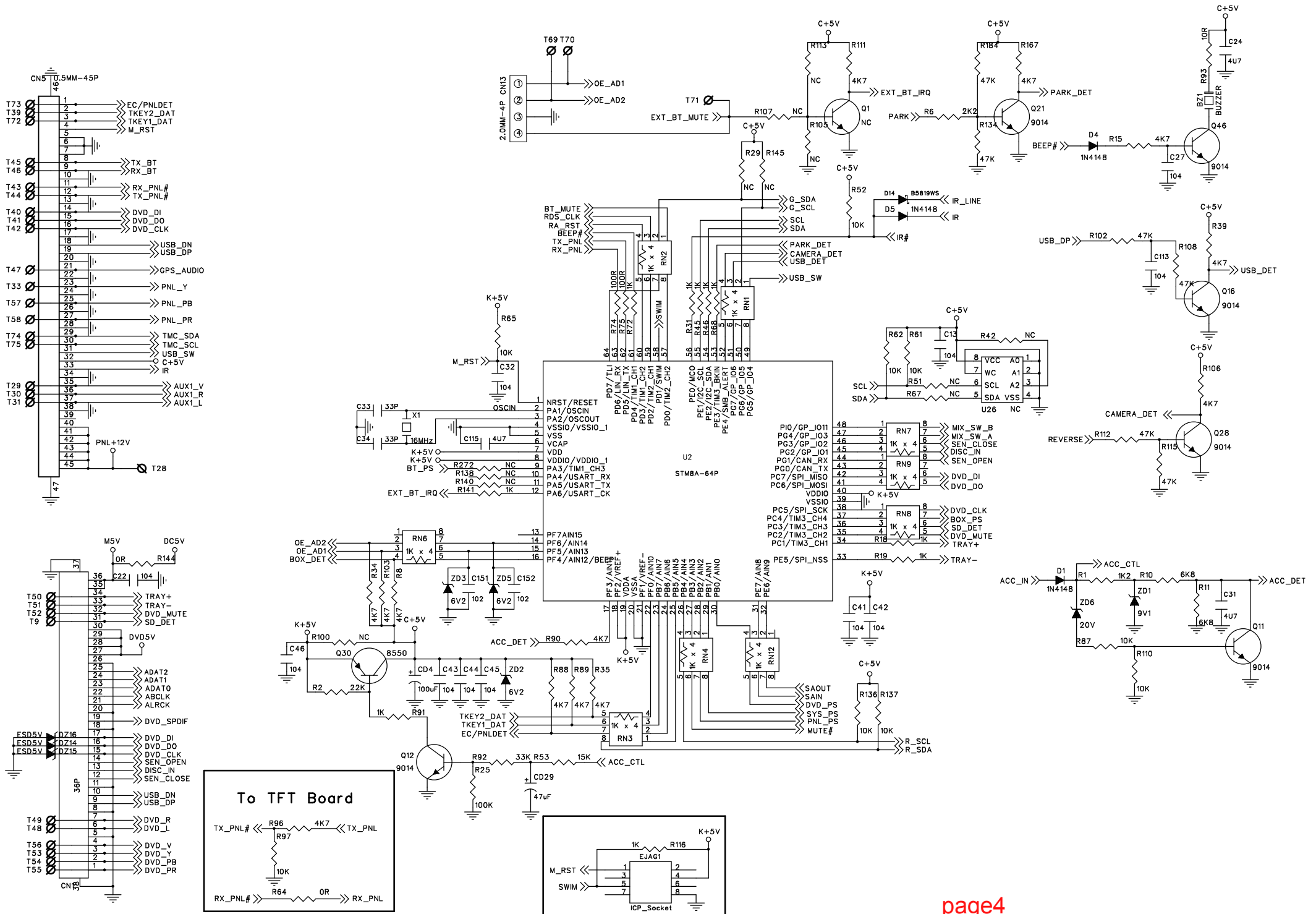
Audio section

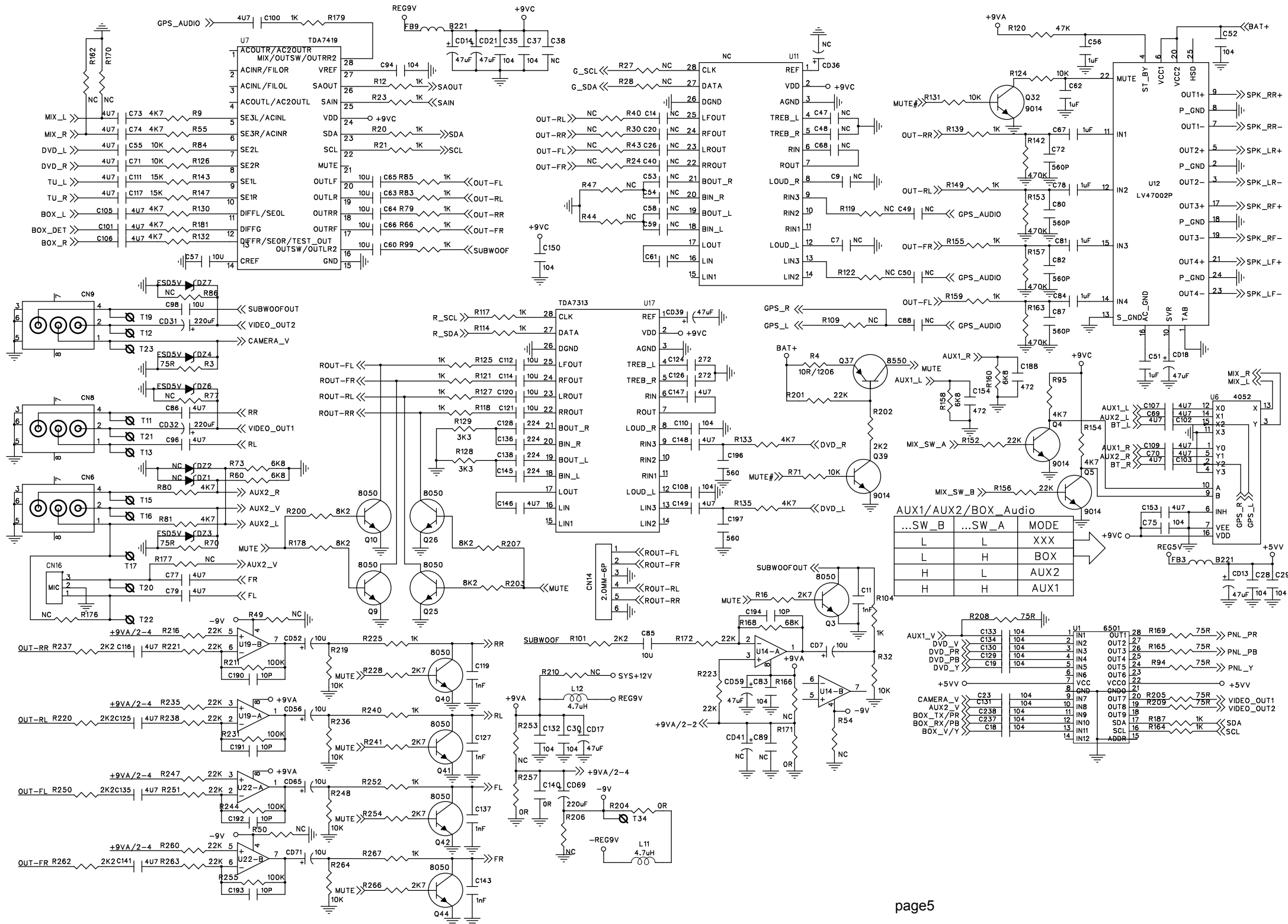
Maximum Power	: 50Wx4
Continuous Power Output (RMS)	: 22 Wx4
Preout Level (V)	: 2 V/10kΩ
Preout Impedance	: ≤ 600Ω
Speaker Impedance	: 4-8 Ω
External Audio Input Level (RCA)	: 1 V/10KΩ
External Audio Input Level (3.5mm Jack)	: 600mv/10KΩ (<1%THD)

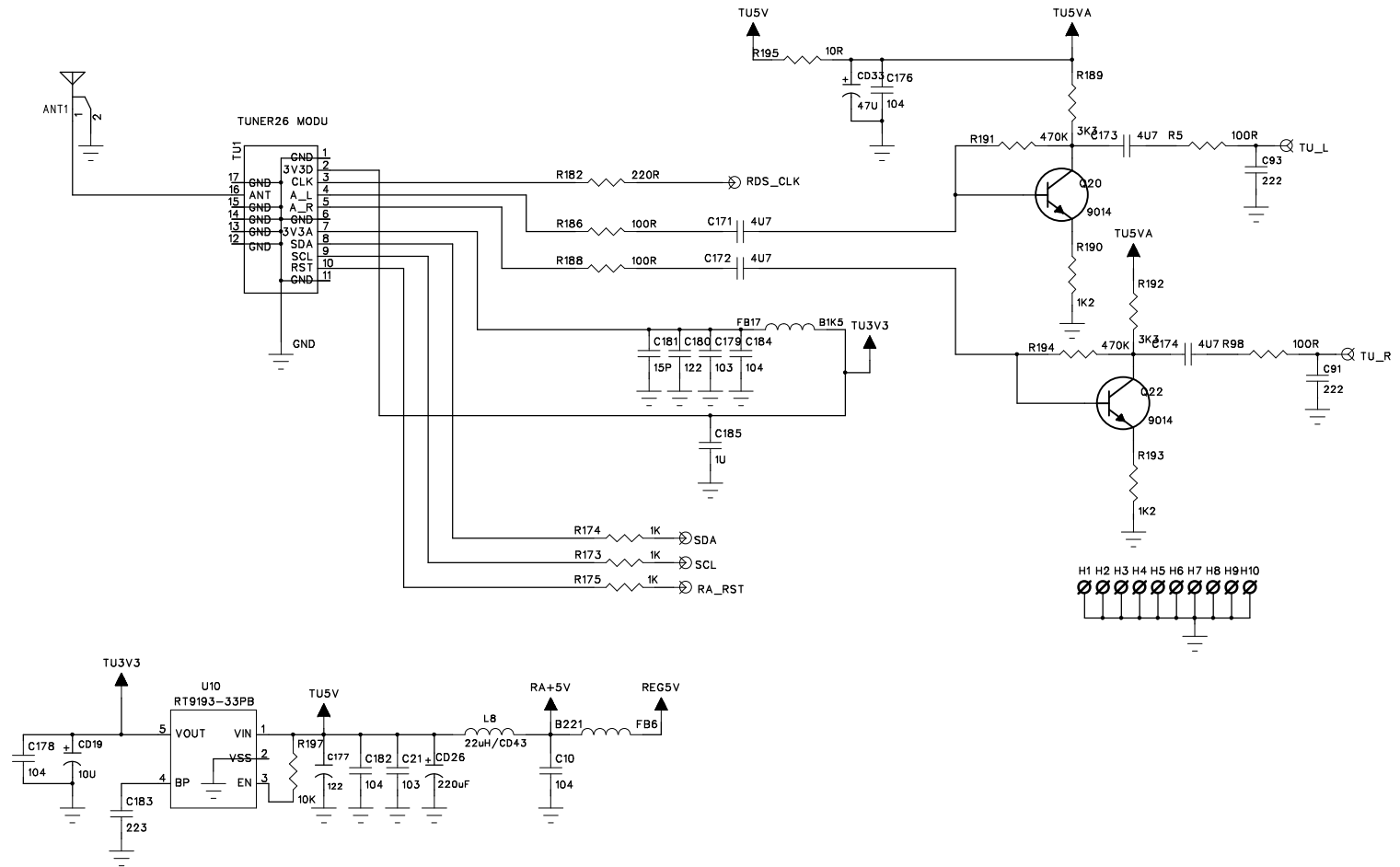
General

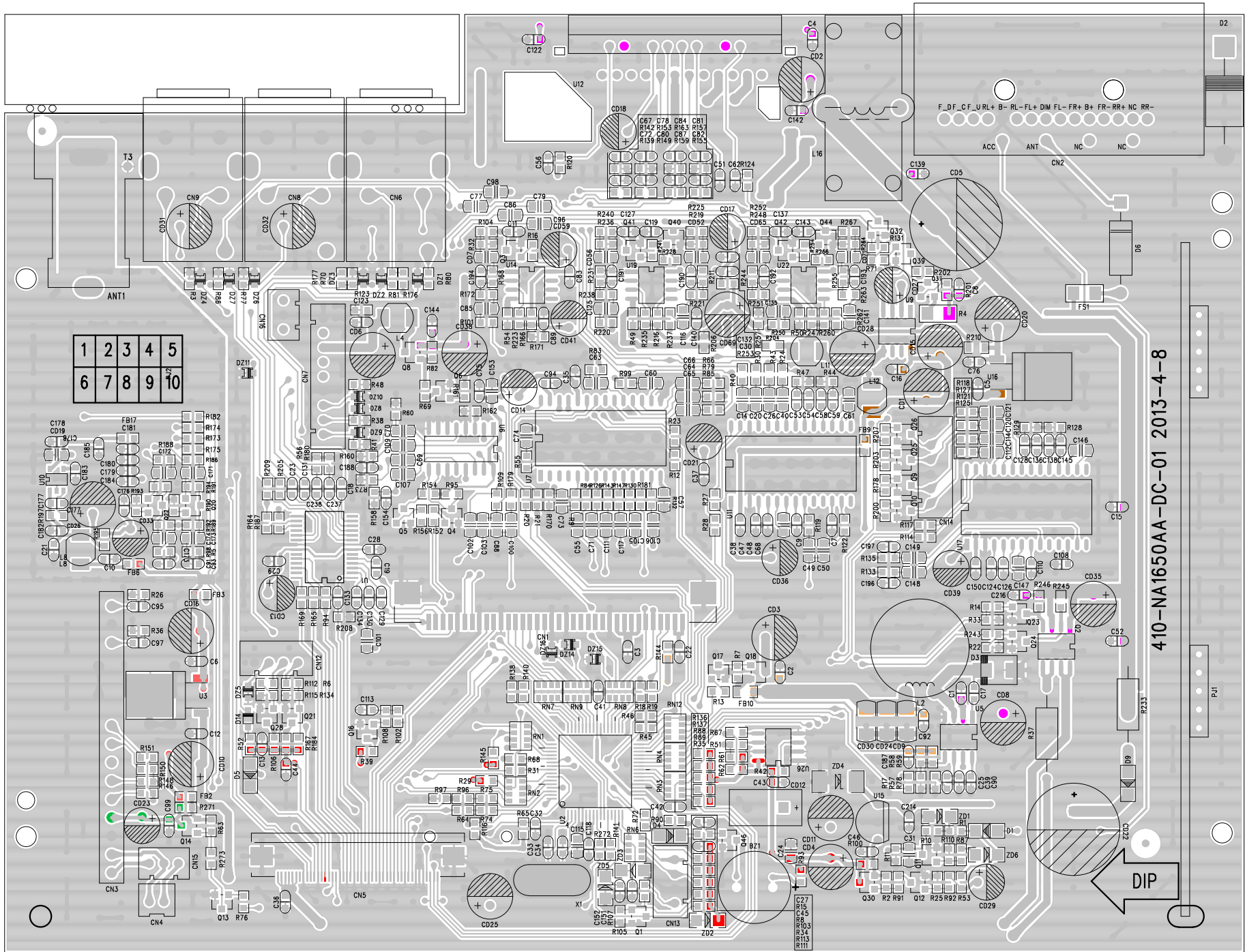
Operating Voltage	: 14.4V(10.5-16 V)
Dimension(WxHxD)	: 178x102x172mm
Operational Temperature Range	: -10°C-+60°C
Storage Temperature Range	: -20°C-+80°C
Weight	: 1.935 kg

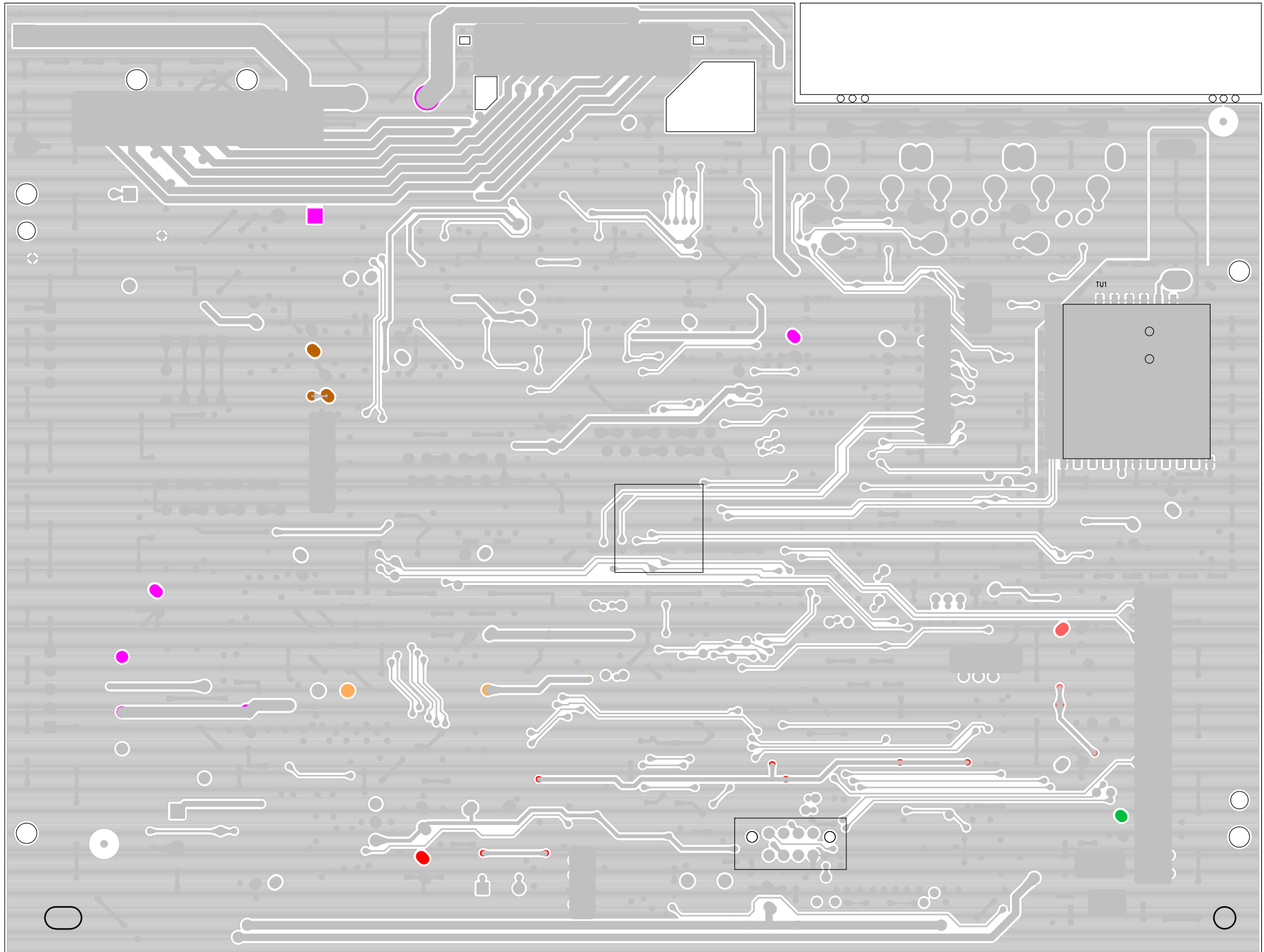


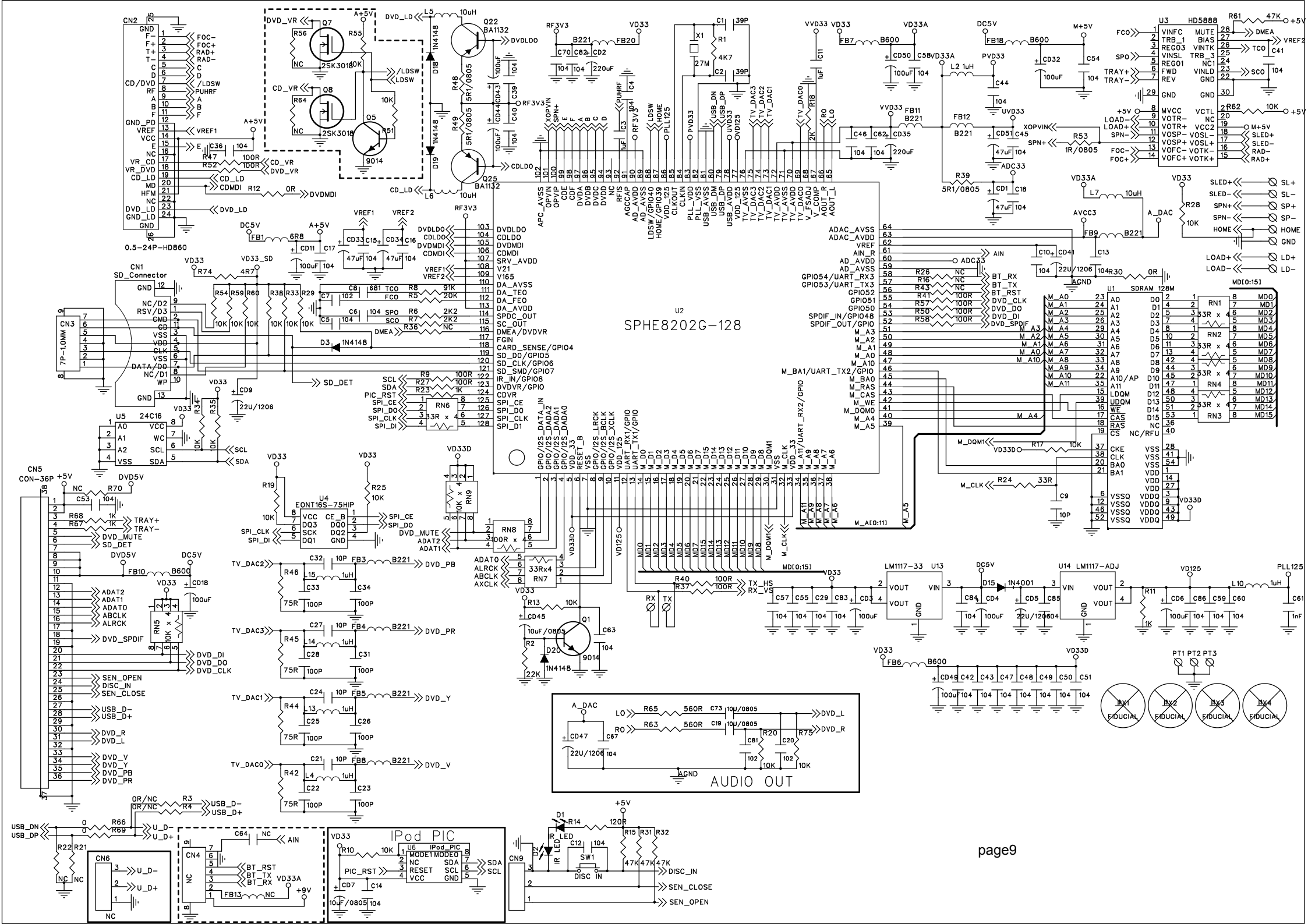


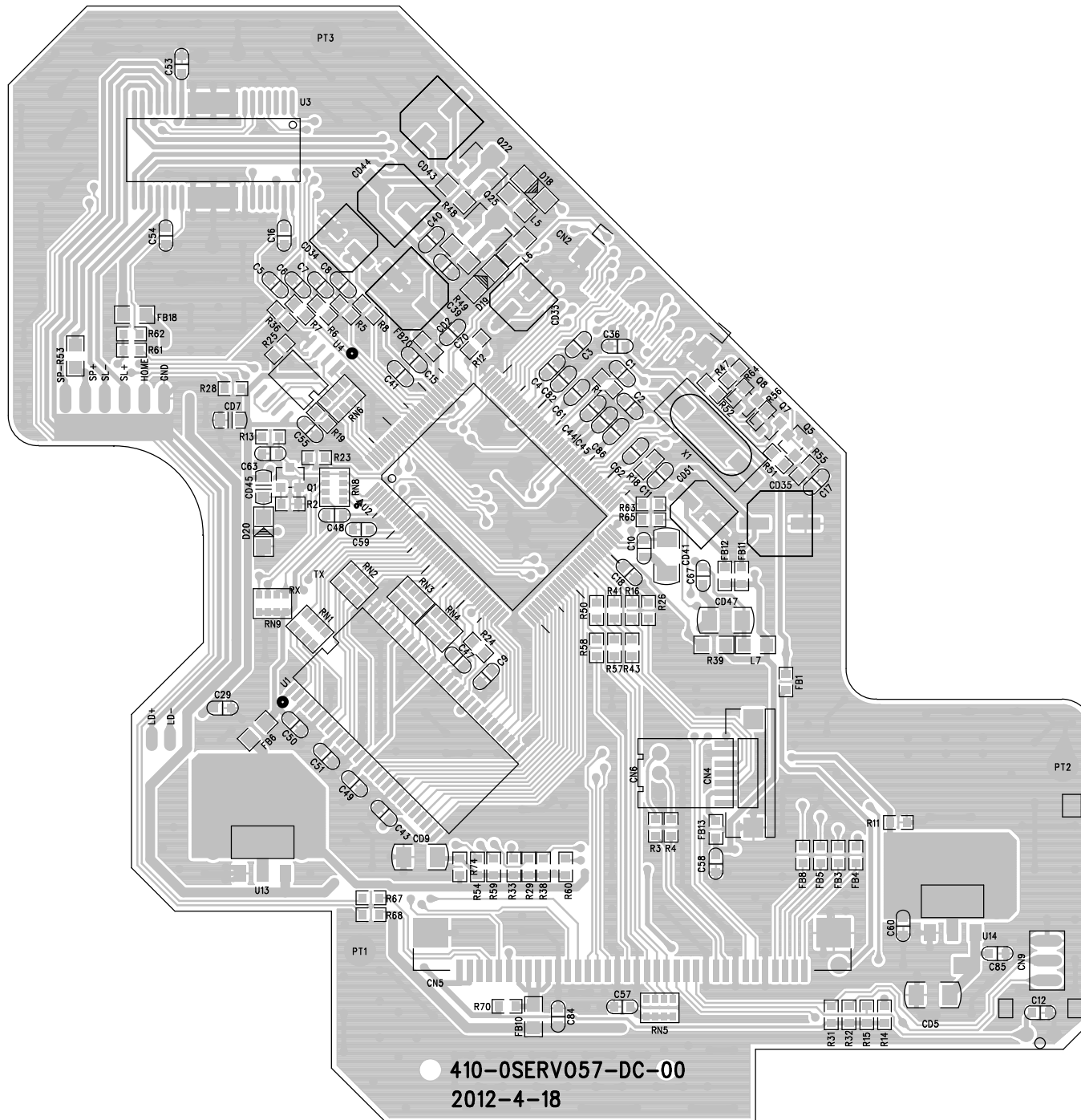




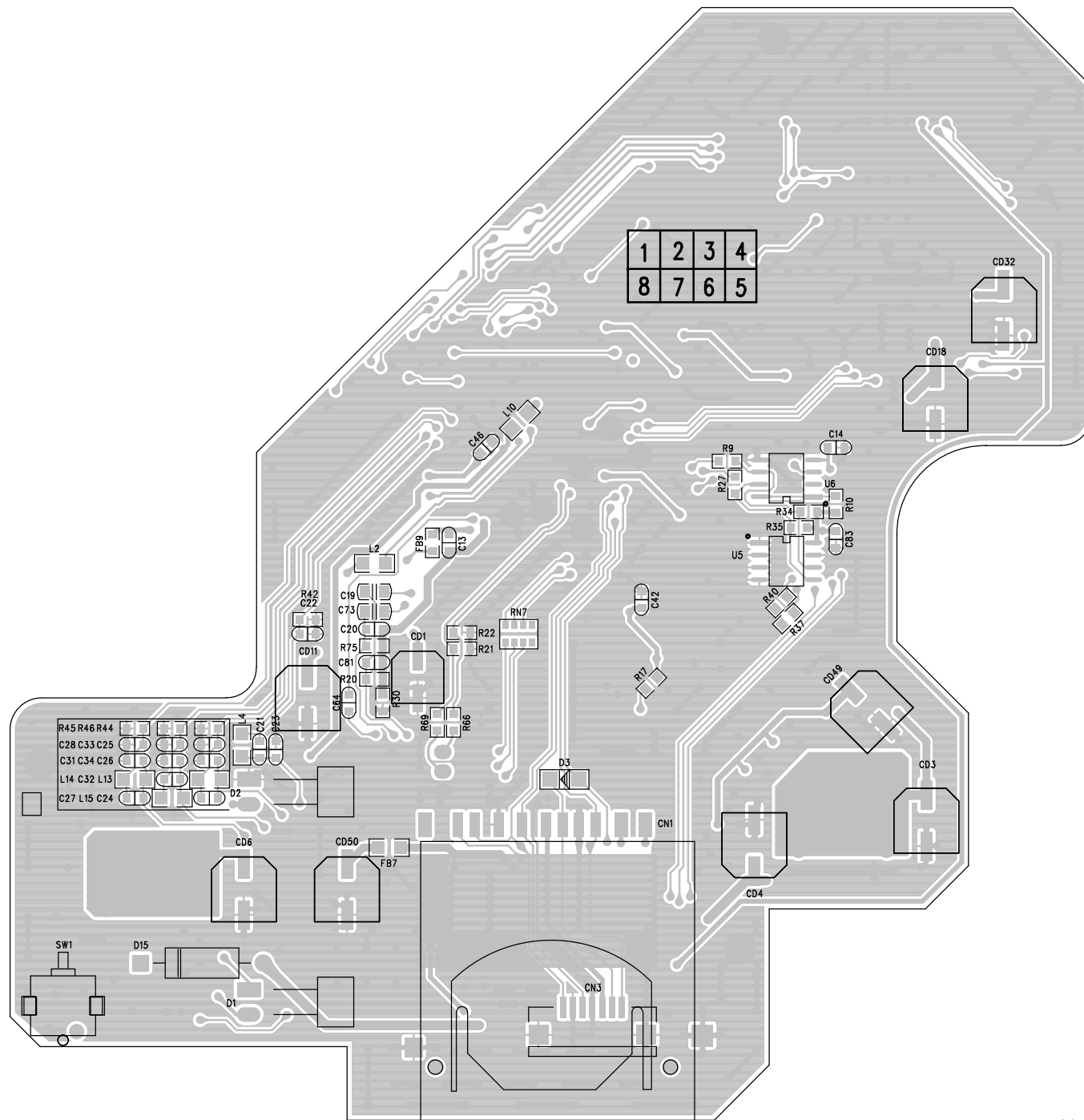


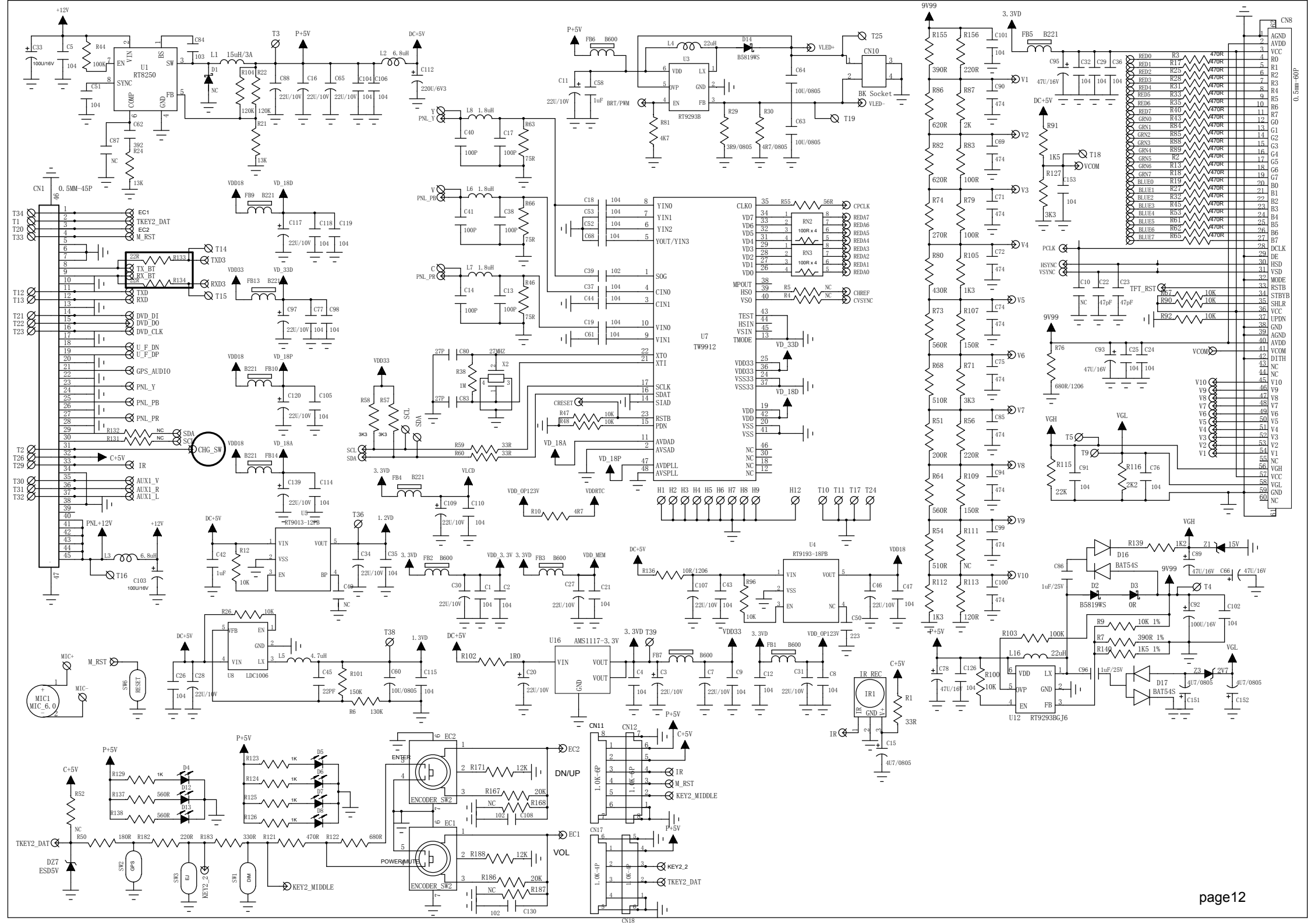


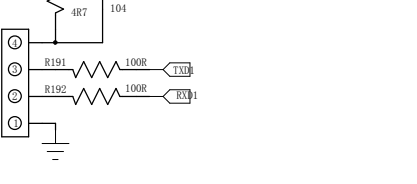
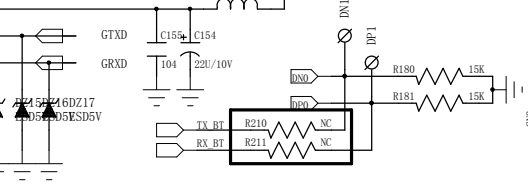
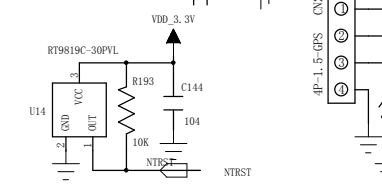
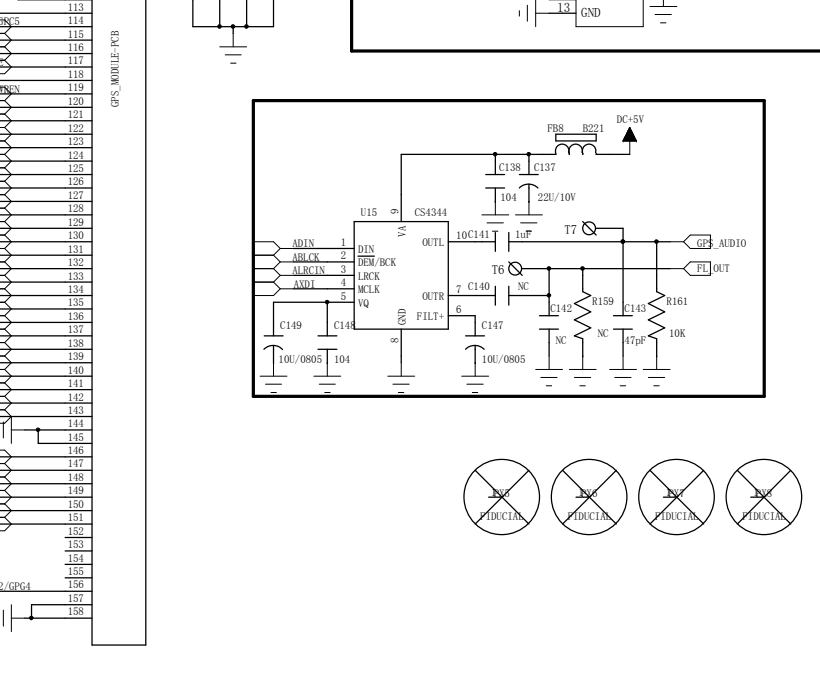
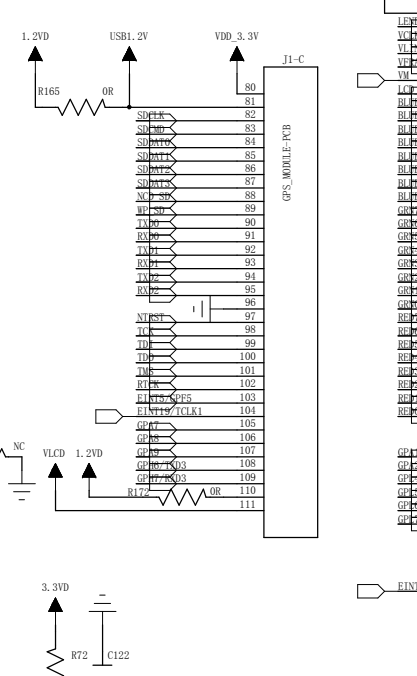
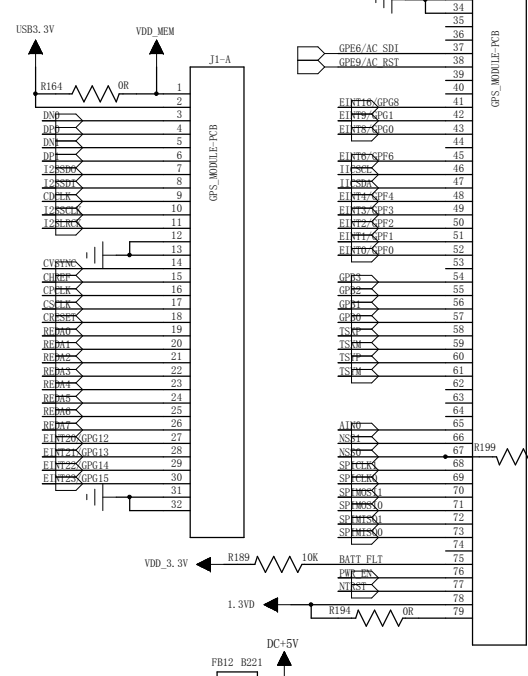
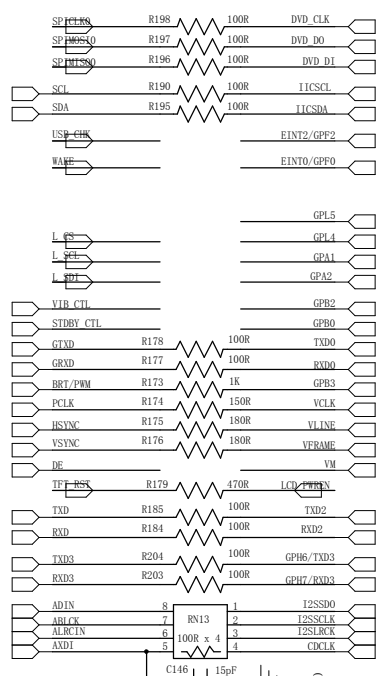
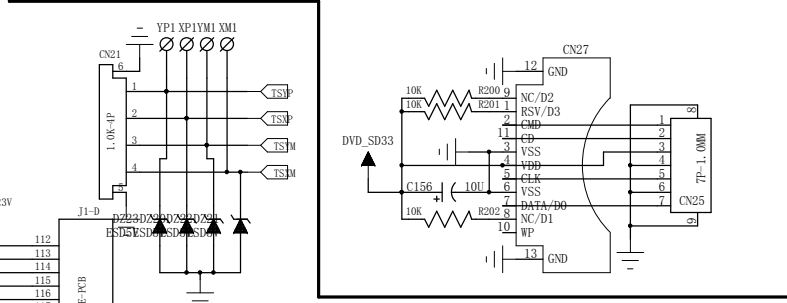
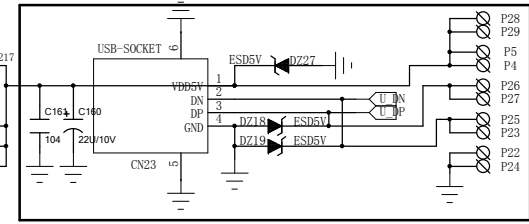
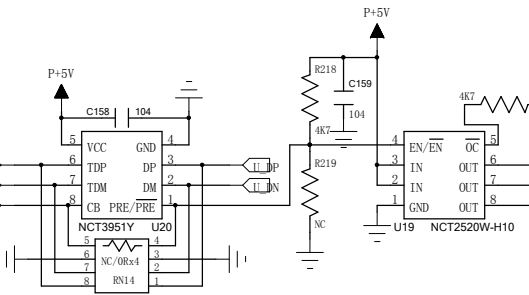
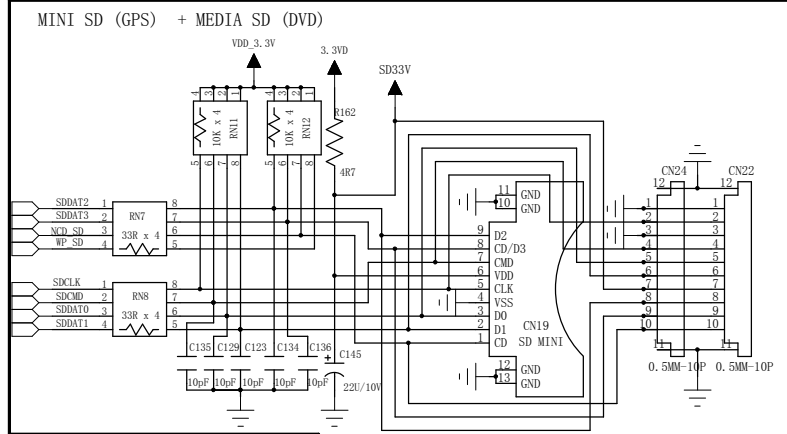
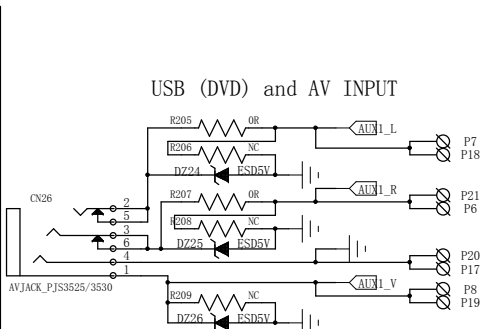
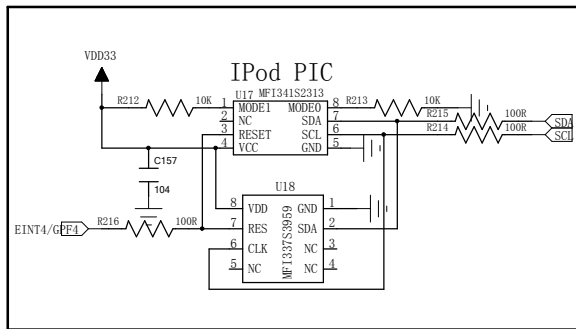
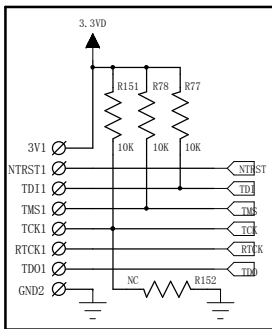


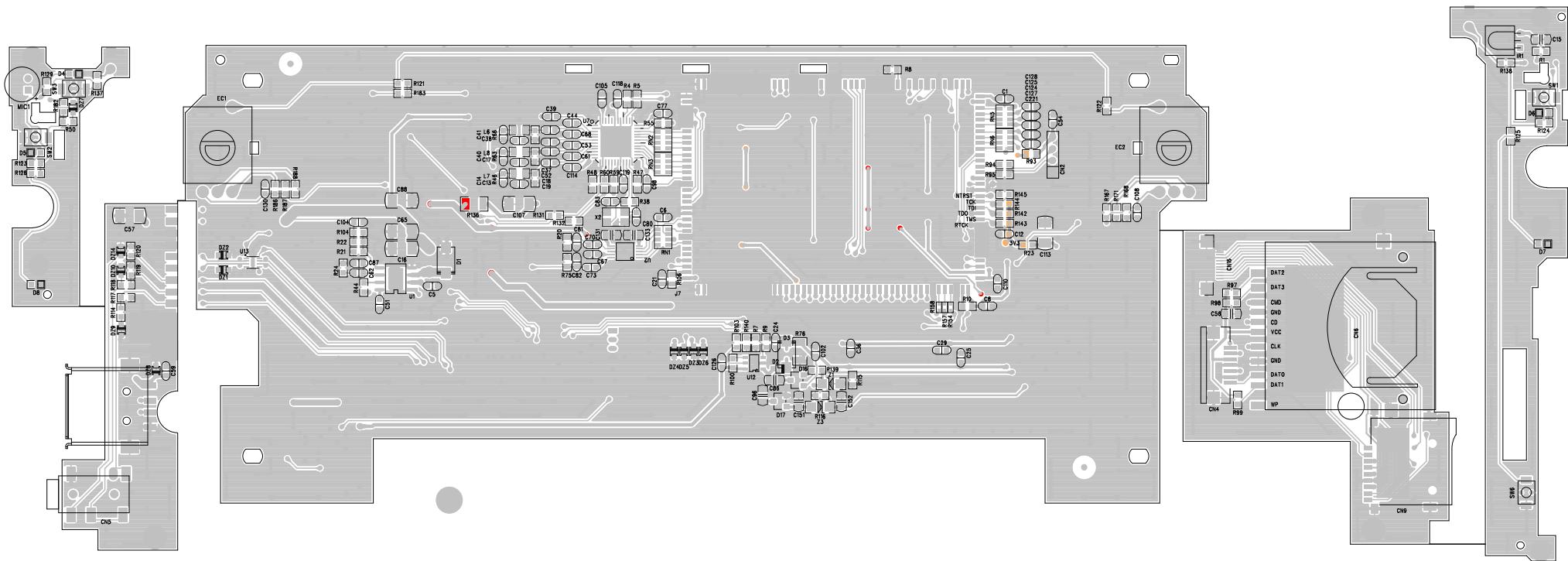


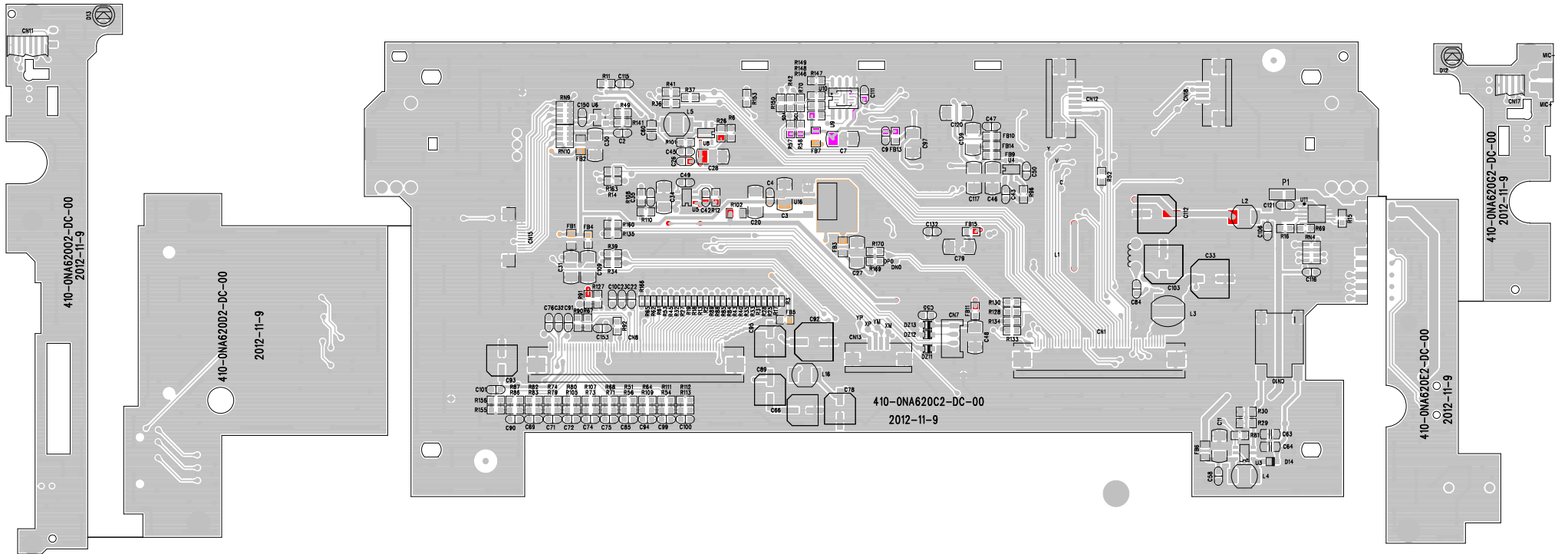
● 410-OSERV057-DC-00
2012-4-18

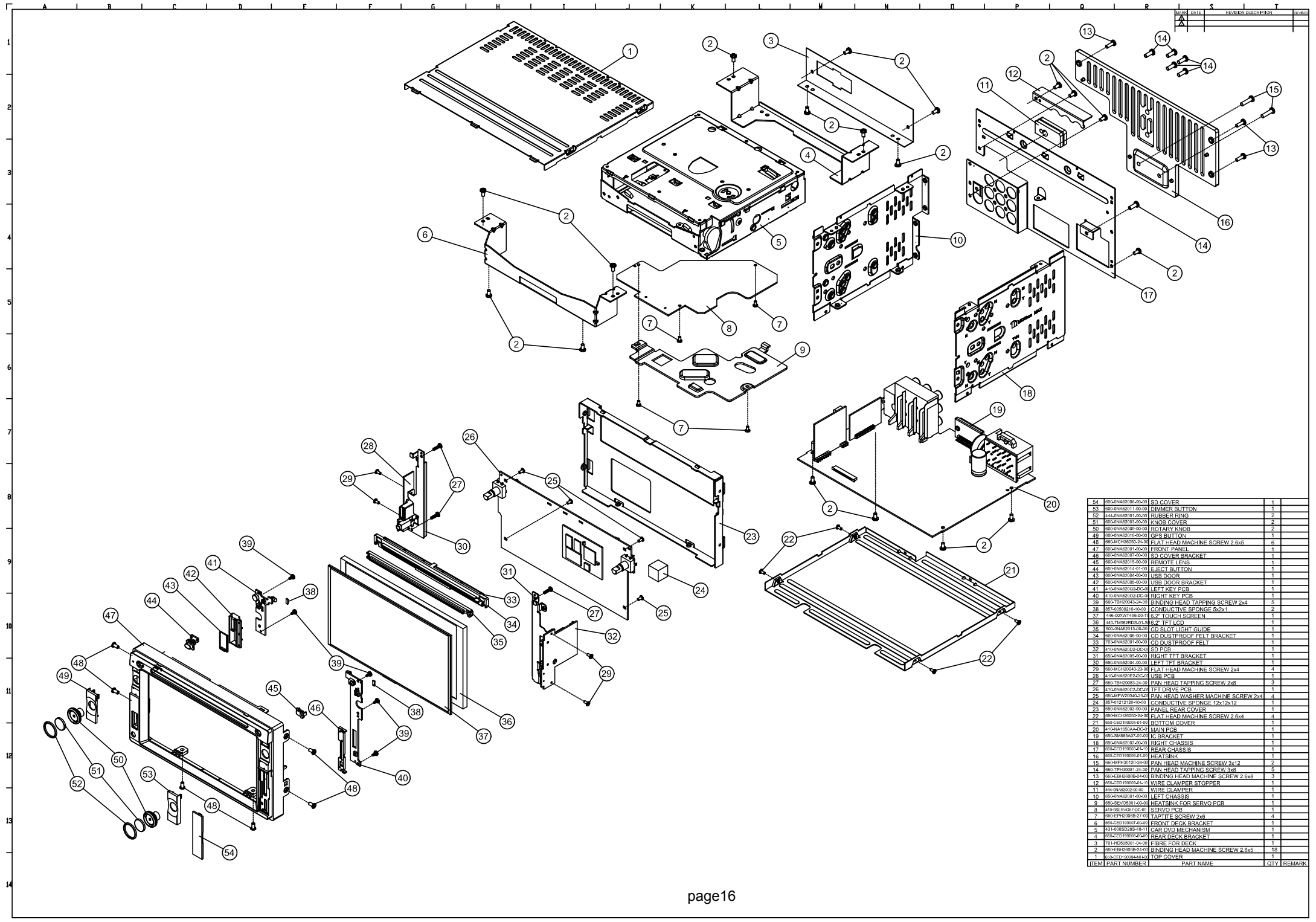












ITEM	PART NUMBER	PART NAME	QTY	REMARK
54	605-0NA62008-00-00	SD COVER BUTTON	1	
53	605-0NA62011-00-00	RIMMER BUTTON	1	
52	444-0NA62008-20-00	RUBBER RING	2	
51	605-0NA62009-00-00	KNIFE COVER	2	
50	605-0NA62008-00-00	ROTARY KNOB	2	
49	605-0NA62010-00-00	GPS BUTTON	1	
48	605-MC0000000000	FLAT HEAD MACHINE SCREW 2.6x5	1	
47	605-0NA62001-00-00	FRONT PANEL	1	
46	605-0NA62007-00-00	SD COVER BRACKET	1	
45	605-0NA62003-00-00	REMOTE LENS	1	
44	605-0NA62014-00-00	EJECT BUTTON	1	
43	605-0NA62004-00-00	USB DOOR	1	
42	605-0NA62005-00-00	USB DOOR BRACKET	1	
41	410-0NA62002-00-00	LEFT KEY PCB	1	
40	410-0NA62002-00-00	RIGHT KEY PCB	1	
39	605-TB00043-24-00	BINDING HEAD TAPPING SCREW 2x4	5	
38	605-000000000000	CONDUCTIVE SPONGE 6.2x1	2	
37	446-000000000000	6.2" TOUCH SCREEN	1	
36	445-TM62R000-00-00	6.2" TFT LCD	1	
35	605-0NA62010-00-00	CD SLOT LIGHT GUIDE	1	
34	605-0NA62008-00-00	CD DUSTPROOF FELT BRACKET	1	
33	703-0NA62001-00-00	CD DUSTPROOF FELT	1	
32	410-0NA62002-00-00	SD PCB	1	
31	605-0NA62009-00-00	RIGHT TFT BRACKET	1	
30	605-0NA62004-00-00	LEFT TFT BRACKET	1	
29	605-MC0000000000	FLAT HEAD MACHINE SCREW 2x4	4	
28	410-0NA62002-00-00	USB PCB	1	
27	605-TB00005-24-00	PAN HEAD TAPPING SCREW 2x8	3	
26	410-0NA62002-00-00	TFT DRIVE PCB	1	
25	605-MW0000000000	PAN HEAD WASHER MACHINE SCREW 2x4	4	
24	605-P01212-10-00	CONDUCTIVE SPONGE 12x12x12	1	
23	605-0NA62003-00-00	PANEL REAR COVER	1	
22	605-MC0000000000	FLAT HEAD MACHINE SCREW 2.6x4	4	
21	605-CE018000-00-00	BOTTOM COVER	1	
20	410-0NA62002-00-00	MAIN PCB	1	
19	605-0NA62004-00-00	IC BRACKET	1	
18	605-0NA62003-00-00	FRONT CHASSIS	1	
17	605-CE018000-00-00	REAR CHASSIS	1	
16	605-CE018000-00-00	HEATSINK	1	
15	605-MW0000000000	PAN HEAD MACHINE SCREW 3x12	2	
14	605-TP10005-12-00	PAN HEAD TAPPING SCREW 3x8	5	
13	605-EH00008-24-00	BINDING HEAD MACHINE SCREW 2.6x8	3	
12	605-CE018000-00-00	WIRE CLAMPER STOPPER	1	
11	444-0NA62005-00-00	WIRE CLAMPER	1	
10	605-0NA62001-00-00	LEFT CHASSIS	1	
9	605-EW00001-00-00	HEATSINK FOR SERVO PCB	1	
8	410-0NA62002-00-00	SERVO PCB	1	
7	605-EH00008-24-00	TAPITTE SCREW 2x8	4	
6	605-CE018000-00-00	FRONT DECK BRACKET	1	
5	610-000000000000	CAR DVD MEGACHASSIS	1	
4	605-CE018000-00-00	REAR DECK BRACKET	1	
3	701-H000000-00-00	FIBRE FOR DECK	1	
2	605-0NA62003-00-00	BINDING HEAD MACHINE SCREW 2.6x5	18	
1	605-CE018000-00-00	TOP COVER	1	
ITEM	PART NUMBER	PART NAME	QTY	REMARK



NA1650 AV Media Receiver User Manual



Enjoy the Lifestyle of In-Car Entertainment

CONTENTS

Contents

Thank you for purchasing a Nakamichi products.

Please read all instructions carefully before operation, to ensure your complete understanding and to obtain the best possible performance from the unit.

INTRODUCTIONS

Overview the unit.....	2
Basic operations.....	3

AV MEDIA

Listening to the radio.....	4
Playing the music.....	5
Enjoying the movie.....	6
Viewing the photo.....	7

BLUETOOTH

Using bluetooth.....	8
----------------------	---

AUDIO ADJUSTMENT

Equalizer.....	9
Subwoofer.....	10
Speaker.....	11

NAVIGATION

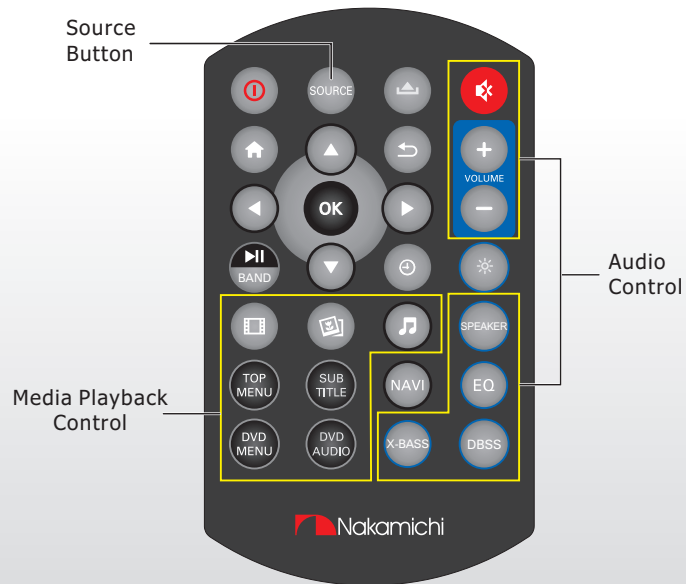
Navigation settings.....	12
--------------------------	----

REFERENCE

Specifications.....	13
---------------------	----

INTRODUCTIONS

Overview the unit



INTRODUCTIONS

Basic operations

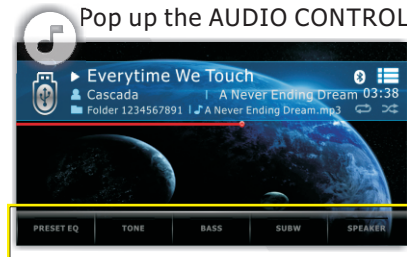
Access to HOME



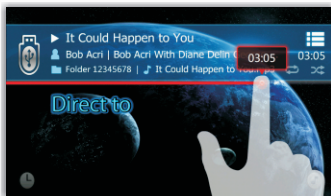
Access to CLOCK / WIDGETS



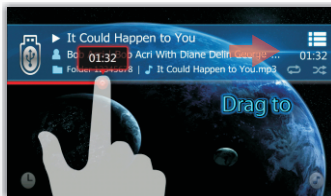
Pop up the AUDIO CONTROL



Direct to PLAYBACK TIME



Swipe for DRAG TO



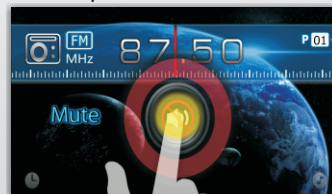
Swipe left/right for UP/DOWN



Rotate for VOLUME adjust



Tap center to MUTE



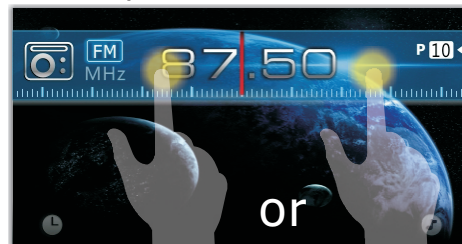
AV MEDIA

Listening to the radio

Swipe left/right AUTO SEEK



Tap MANUAL SEEK



Tap BAND to change to FM or AM



PRESET LIST/
TUNER FUNCTION

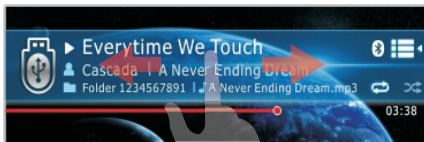


AV MEDIA

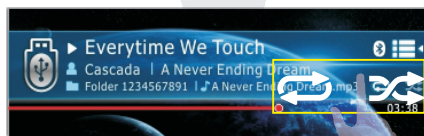
Playing the music

Swipe drag to
PLAYBACK TIME

Tap direct go to
PLAYBACK TIME

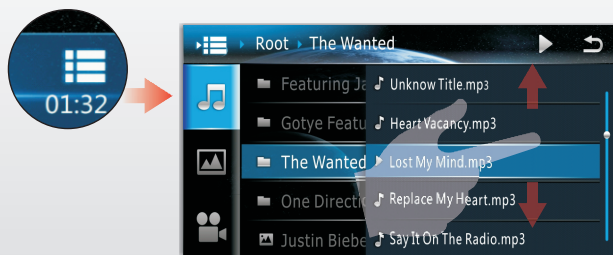
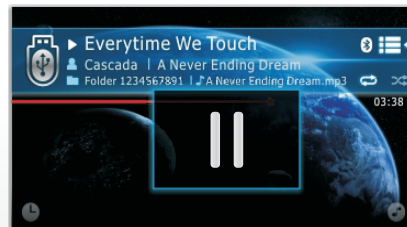
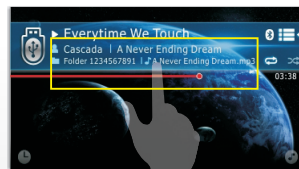


Swipe UP/DOWN



Tap REPEAT / RANDOM

Tap PLAY / PAUSE



QUICK BROWSER

Operation steps:

- TIPS**
1. Connect the desire playback device(USB/SD) to the USB or SD socket.
 2. Access to HOME, then tap the desire playback device(USB/SD).
 3. Playback starts.

AV MEDIA

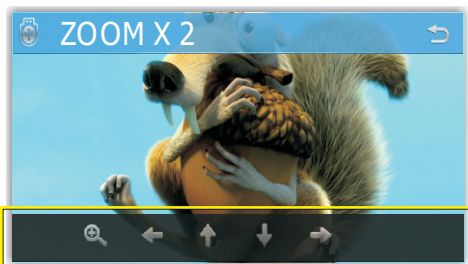
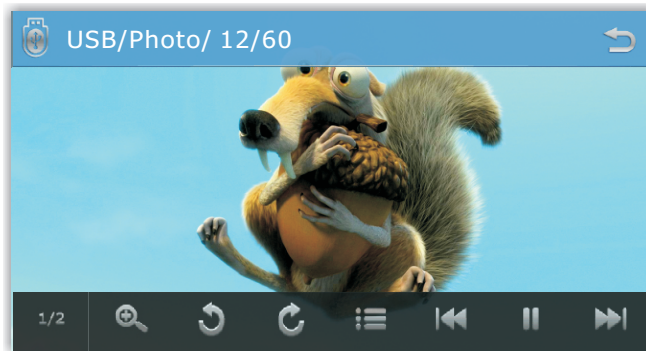
Enjoying the movie



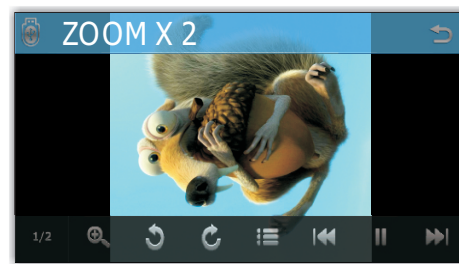
1/2 2/2	Change function bar
	Select the audio type. (For DVD-VR:Select the audio channel)
	Subtitle type.
	Top Menu or Browser
	Previous, Pause / Play , Next
	Audio Settings
4:3 16:9	Select aspect ratio
	Brightness
	Contrast
	Saturation
	Repeat playback mode
	Zoom the video & photo
PBC	PBC on/off (VCD only)

AV MEDIA







Viewing the photo



When zoom x2,x4,x8 will pop up the arrow button to move the photo.



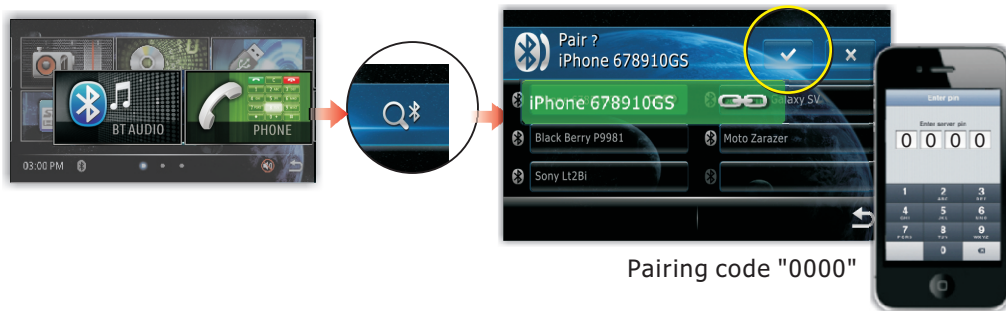
Rotate function only can support for original size photo.

	Rotate left
	Rotate right
	Move left the zooming frame
	Move up the zooming frame
	Move down the zooming frame
	Move right the zooming frame

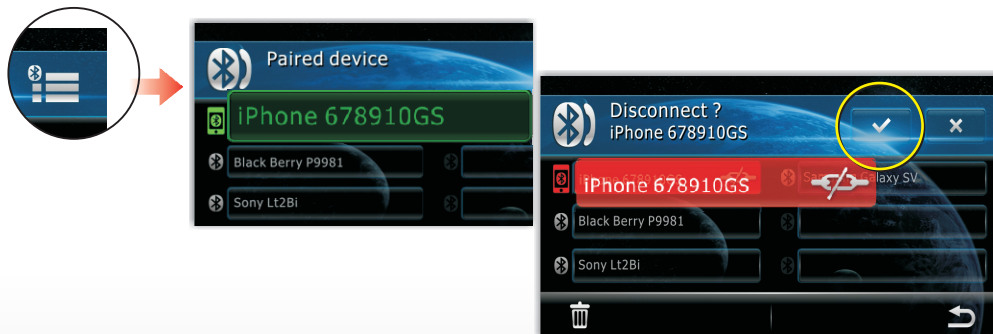
BLUETOOTH

Using bluetooth

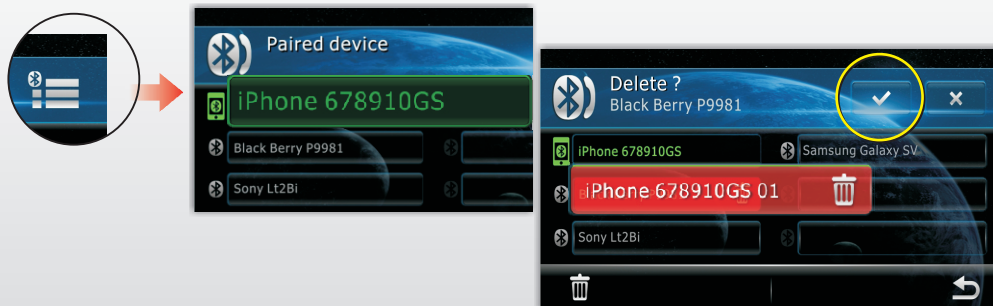
How to pair & connect device ?



How to disconnect ?



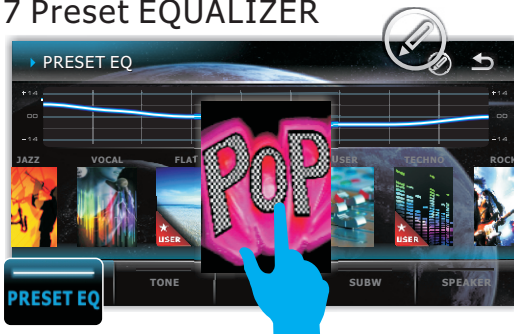
How to delete ?



AUDIO ADJUSTMENT

Equalizer

7 Preset EQUALIZER



Preset EQ(USER)



TIPS Access to user preset EQ mode

Resume to factory default value

3 Band Tone control



BASS Enhance



AUDIO ADJUSTMENT

Sub-woofer

SUB-WOOFER settings

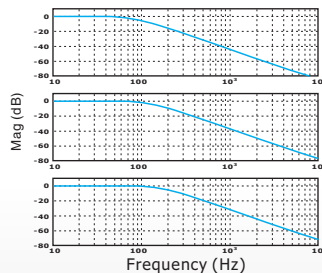


Low Pass Filter Transfer Function

80 Hz

120 Hz

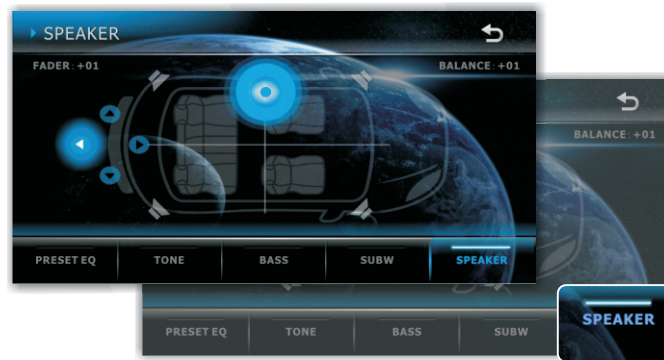
160 Hz



AUDIO ADJUSTMENT

Speaker

Adjust fader & balance to get the perfect sound.



NAVIGATION

Navigation settings

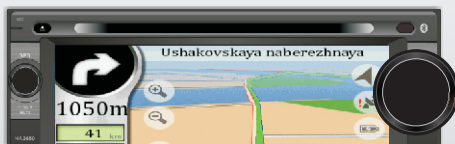
Set the navigation program path



Navigation Voice Output
Select the voice output from the desire speaker location



Navigation Voice scale Level
Adjust the voice level scale between playback sound



While GPS Navigation is running, rotate this knob can adjust the voice gain level.

REFERENCE

Specifications

TFT Monitor section

Screen Size	:6.2 inches
Display Resolution	:800x480 dots
Contrast Ratio	:500

Disc player section

Disc System	:DVD/CD/VCD
Disc Diameter	:12cm
Frequency Response	:20Hz - 20kHz
Signal/Noise Ratio	:>75 dB
Total Harmonic Distortion	:Less than 0.3%
Channel Separation	:>55 dB
Video Signal Format	:NTSC/PAL
Video Output	:1+/-0.2V p-p

USB interface section

USB Standard	:USB 2.0 Full Speed
File System	:FAT 16/32
Maximum Current	:DC 5V= 1A
D/A Converter	:24Bit
Video Decoder	:MPEG1/MPEG2
Audio Decoder	:MP3

Memory Card section

Memory Cards	:SD/SDHC
Maximum Capacity	:32G

Bluetooth section

Communication System	: Bluetooth Standard version 2.0
Output	: Bluetooth Standard Power Class 2
Maximum Communication Range	: Approx. 5meters
Frequency Band	: 2.4 GHz
Compatible Bluetooth Profiles	: HFP/HSP/A2DP/AVRCP
Supported Codecs	: SBC (Sub Band Codec)

Radio section

Frequency FM range	: 87.5 - 108.0 MHz
Frequency AM(MW) range	: 522-1620 KHz
Usable sensitivity	: 2 uV (FM) : 80 uV (AM)(MW)

Video section

Color System of External Video Input	: NTSC/PAL/SCEAM
External Video Input (RCA/3.5m Jack)	: 1 Vp-p /75Ω

Audio section

Maximum Power	: 50Wx4
Continuous Power Output (RMS)	: 22 Wx4
Preout Level (V)	: 2 V/10kΩ
Preout Impedance	: ≤ 600Ω
Speaker Impedance	: 4-8 Ω
External Audio Input Level (RCA)	: 1 V/10KΩ
External Audio Input Level (3.5mm Jack)	: 600mv/10KΩ (<1%THD)

General

Operating Voltage	: 14.4V(10.5-16 V)
Dimension(WxHxD)	: 178x102x172mm
Operational Temperature Range	: -10°C-+60°C
Storage Temperature Range	: -20°C-+80°C
Weight	: 1.935 kg



Design and specifications are subject to change
without notice

© 2013 Nakamichi
www.nakamichicaraudio.com

