

Service Manual



CONTENTS

Technical specification	1-1
Main board	
Circuit diagram	2-1... 2-3
Layout diagram	2-4... 2-5
Panel board	
Circuit diagram	3-1... 3-3
Layout diagram	3-4 ... 3-5
Exploded view diagram	4-1
Instruction Manual	page14-31

TFT Monitor section

Screen Size :6.2 inches
 Display Resolution :800x480 dots
 Contrast Ratio :500

Disc player section

Disc System :DVD/CD/VCD
 Disc Diameter :12cm
 Frequency Response :20Hz - 20kHz
 Signal/Noise Ratio :>75 dB
 Total Harmonic Distortion :Less than 0.3%
 Channel Separation :>55 dB
 Video Signal Format :NTSC/PAL
 Video Output :1+/-0.2V p-p

USB interface section

USB Standard :USB 2.0 Full Speed
 File System :FAT 16/32
 Maximum Current :DC 5V= 1A
 D/A Converter :24Bit
 Video Decoder :MPEG1/MPEG2
 Audio Decoder :MP3

Memory Card section

Memory Cards :SD/SDHC
 Maximum Capacity :32G

Bluetooth section

Communication System : Bluetooth Standard version 2.0
 Output : Bluetooth Standard Power Class 2
 Maximum Communication Range : Approx. 5meters
 Frequency Band : 2.4 GHz
 Compatible Bluetooth Profiles : HFP/HSP/A2DP/AVRCP
 Supported Codecs : SBC (Sub Band Codec)

Radio section

Frequency FM range : 87.5 - 108.0 MHz
 Frequency AM(MW) range : 522-1620 KHz
 Usable sensitivity : 2 uV (FM)
 : 80 uV (AM)(MW)

Video section

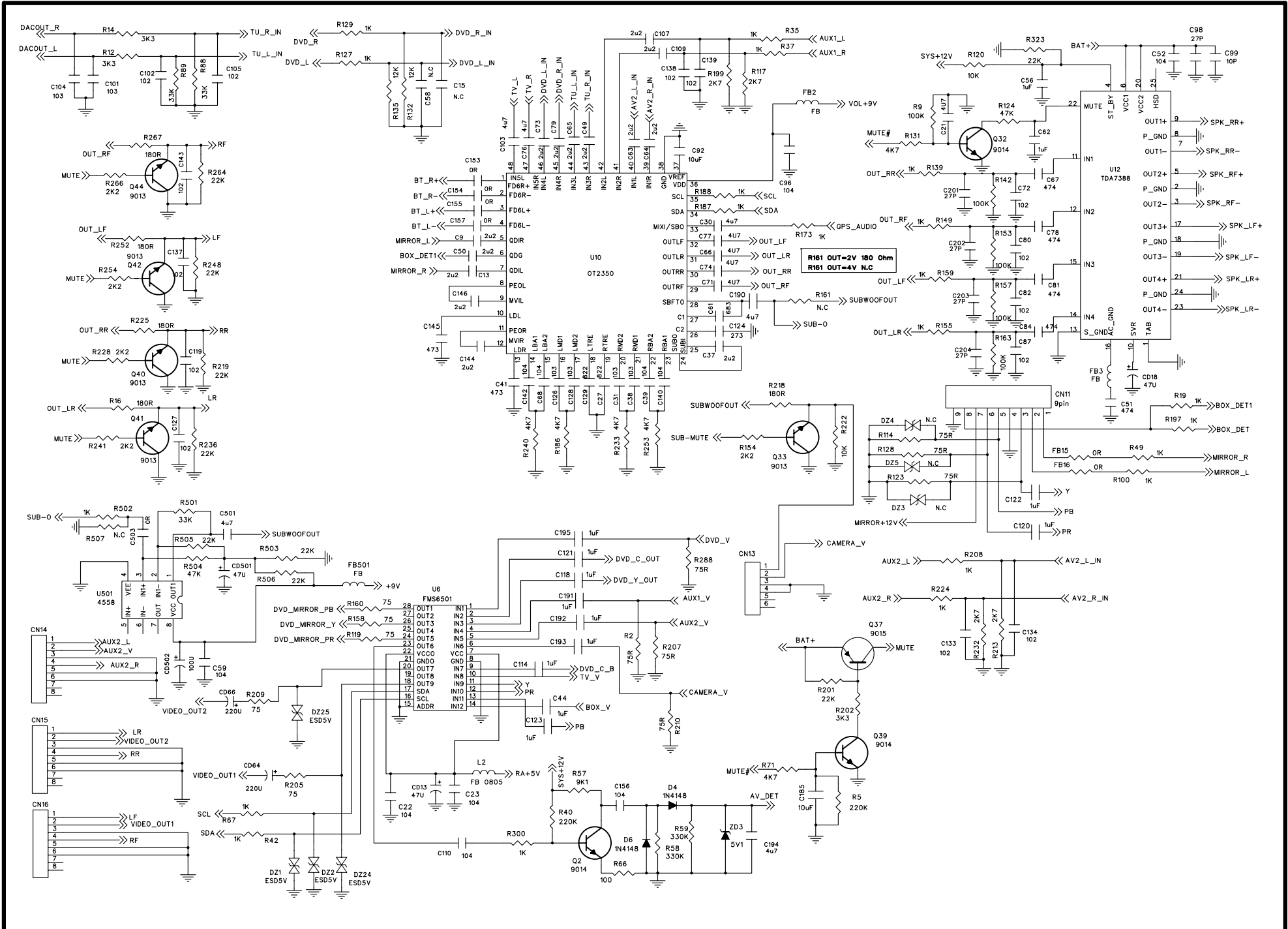
Color System of External Video Input : NTSC/PAL/SCEAM
 External Video Input (RCA/3.5m Jack) : 1 Vp-p /75Ω

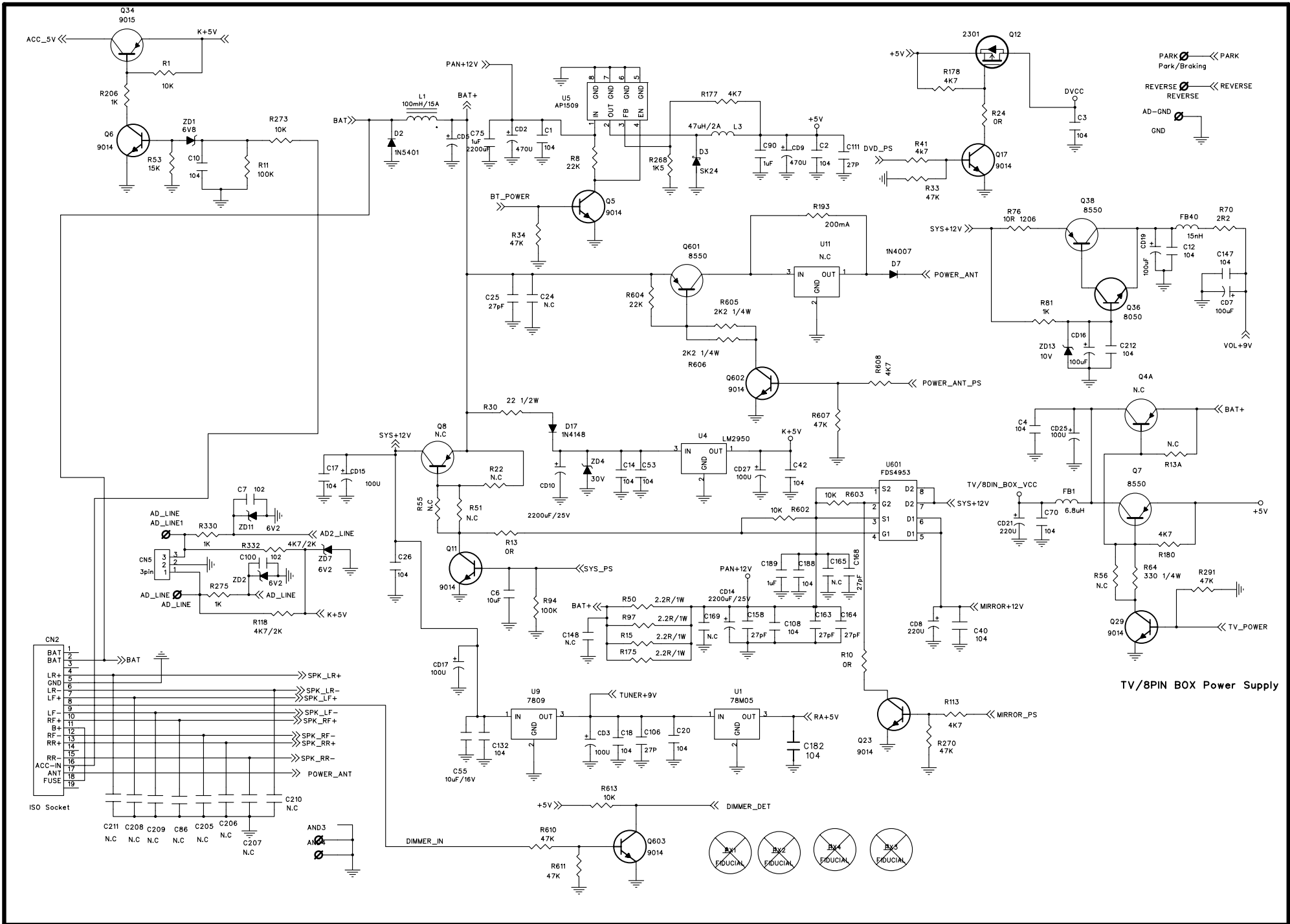
Audio section

Maximum Power : 50Wx4
 Continuous Power Output (RMS) : 22 Wx4
 Preout Level (V) : 2 V/10kΩ
 Preout Impedance : ≤ 600Ω
 Speaker Impedance : 4-8 Ω
 External Audio Input Level (RCA) : 1 V/10KΩ
 External Audio Input Level (3.5mm Jack) : 600mv/10KΩ (<1%THD)

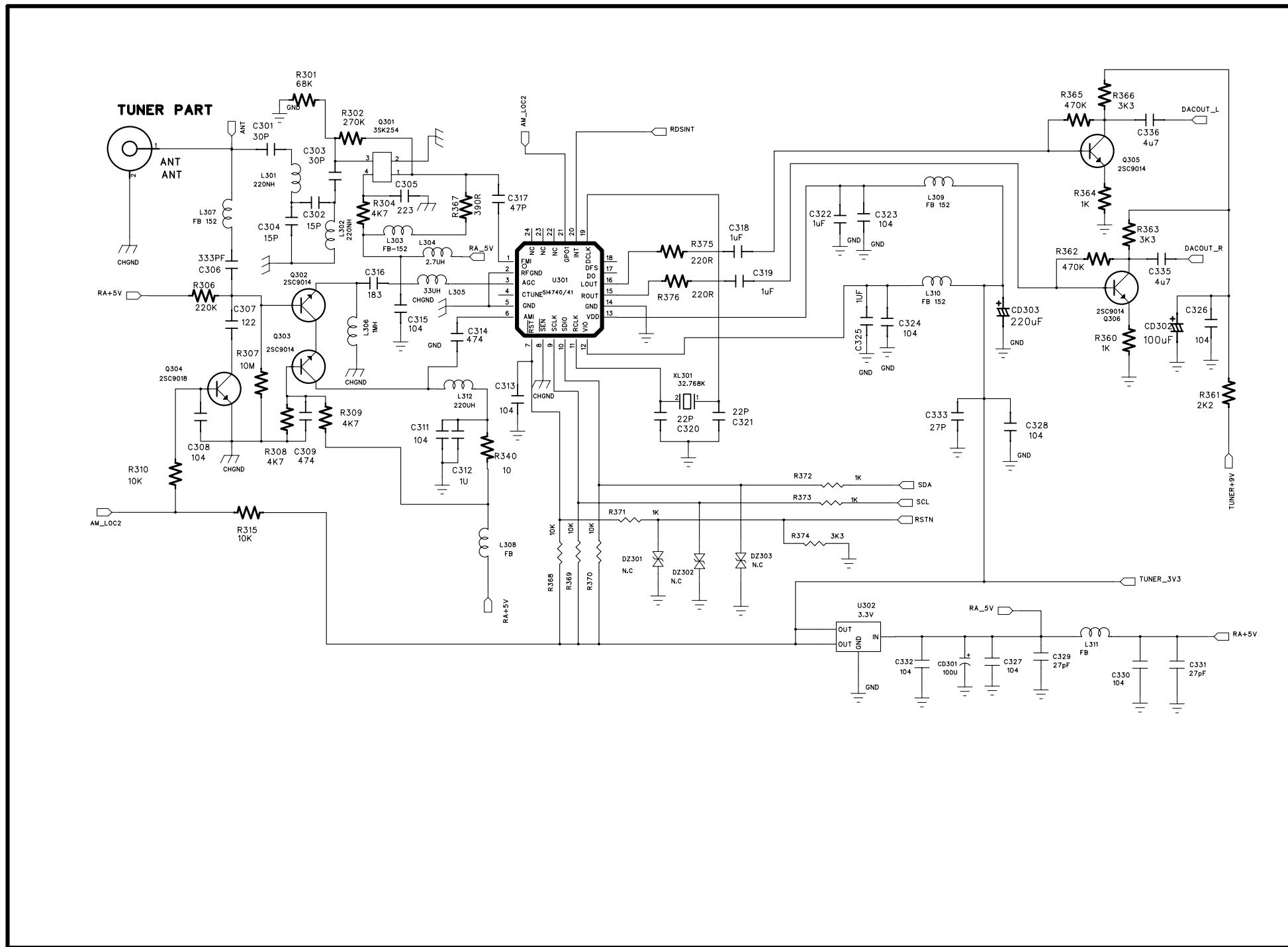
General

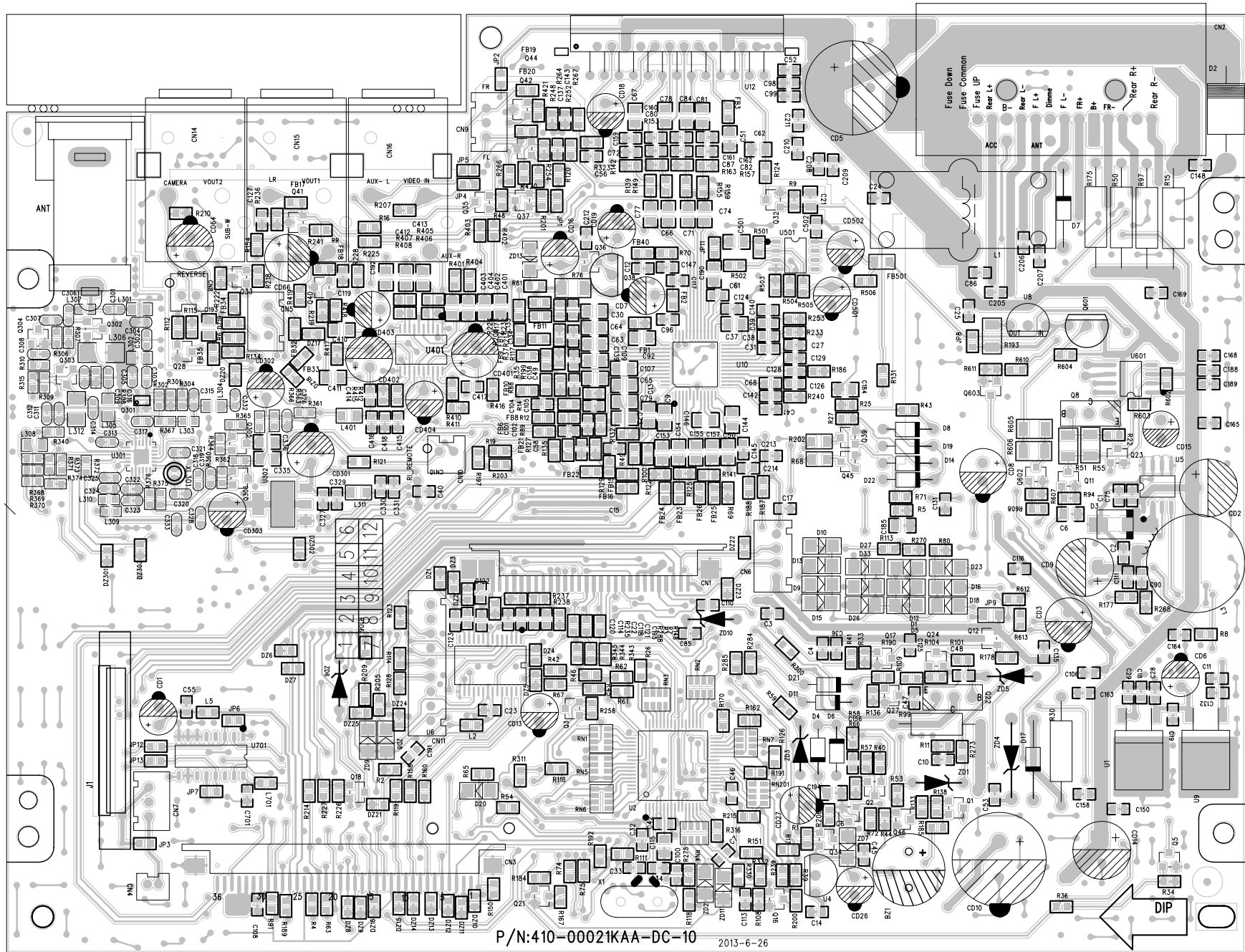
Operating Voltage : 14.4V(10.5-16 V)
 Dimension(WxHxD) : 178x102x172mm
 Operational Temperature Range : -10°C-+60°C
 Weight : 1.93 kg

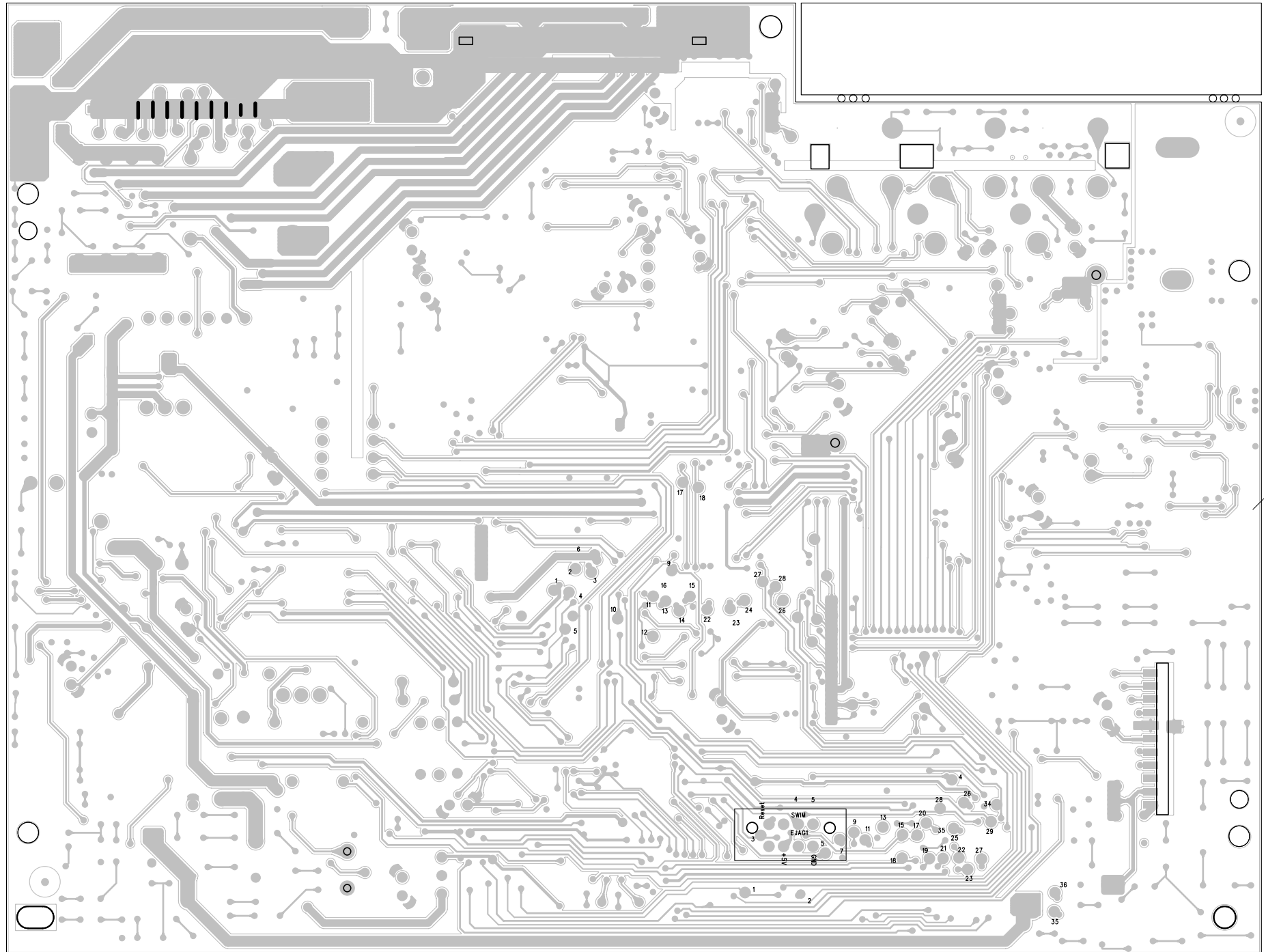


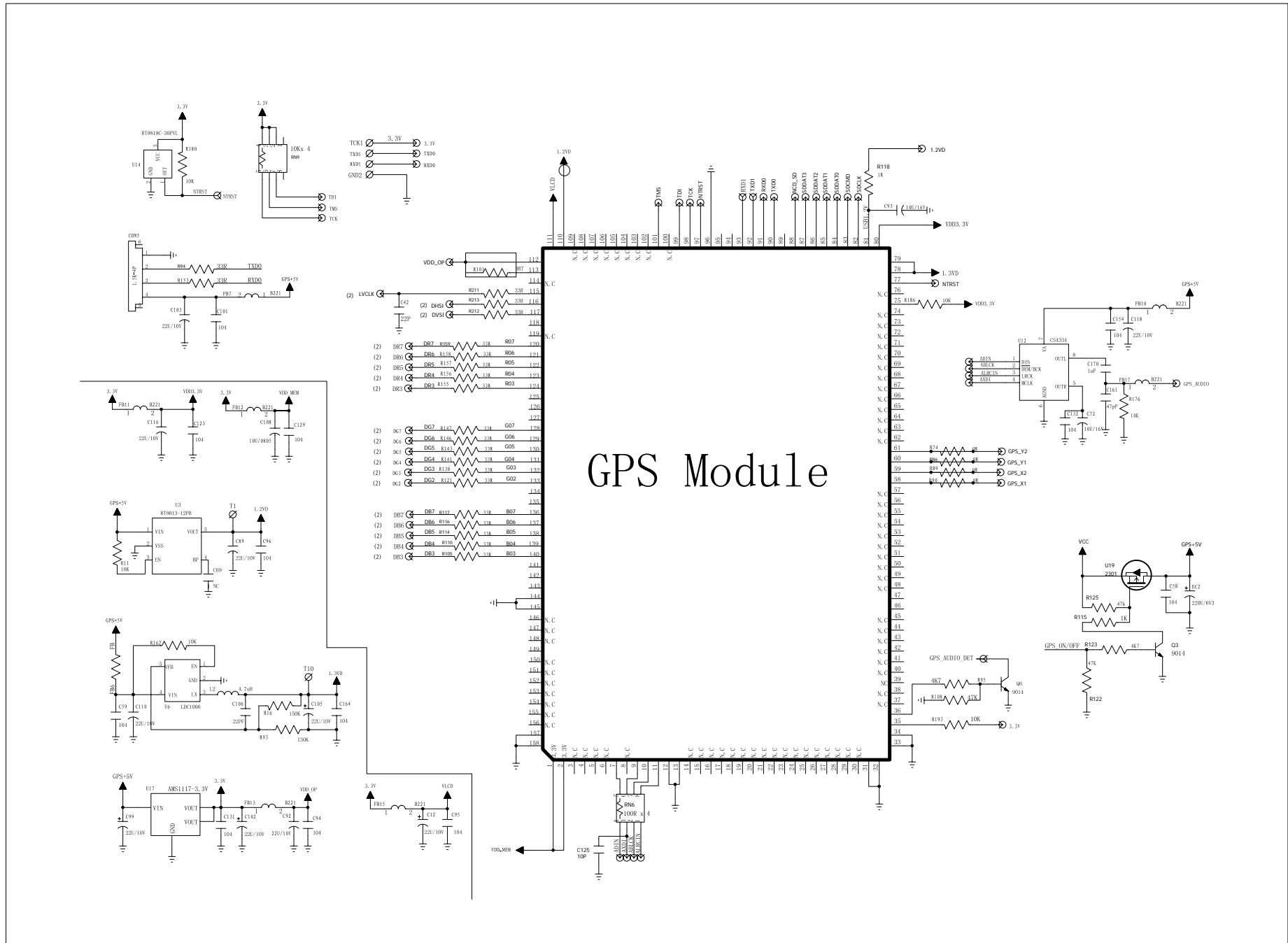


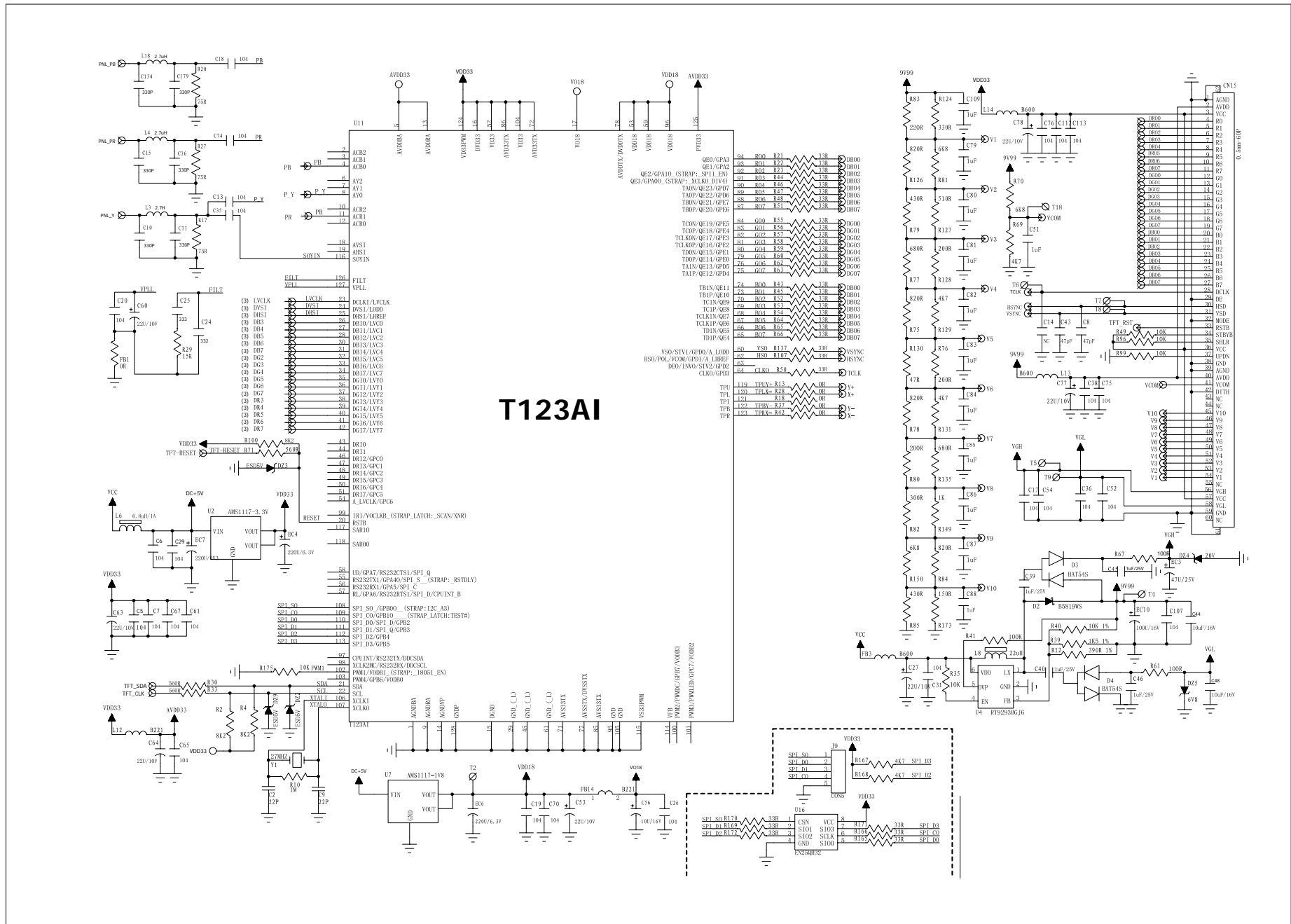
TV/8PIN BOX Power Supply

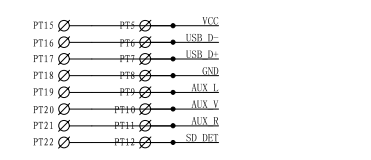
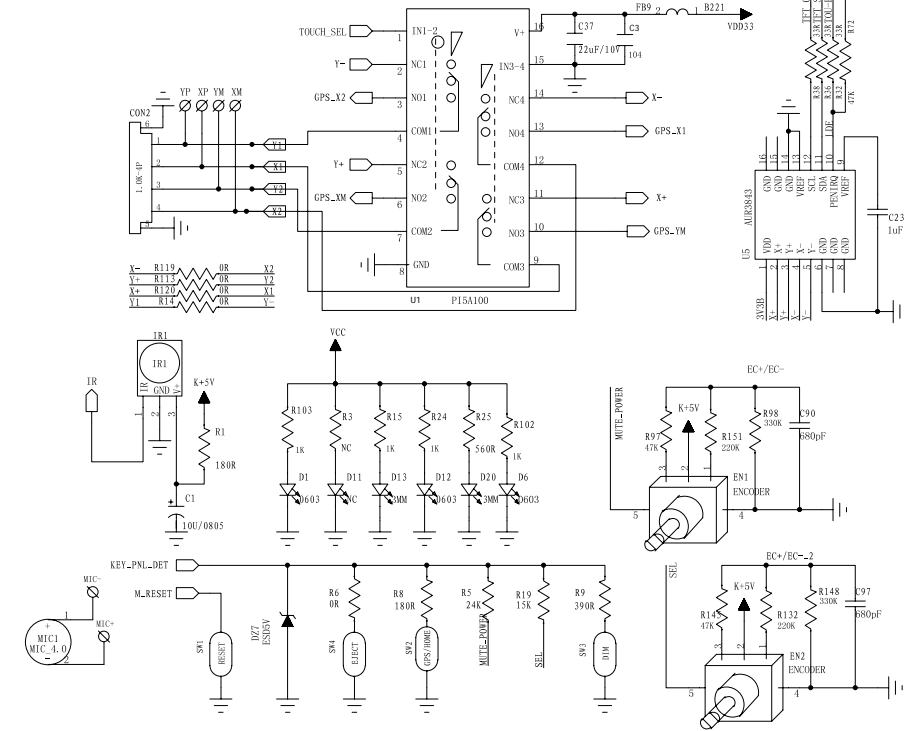
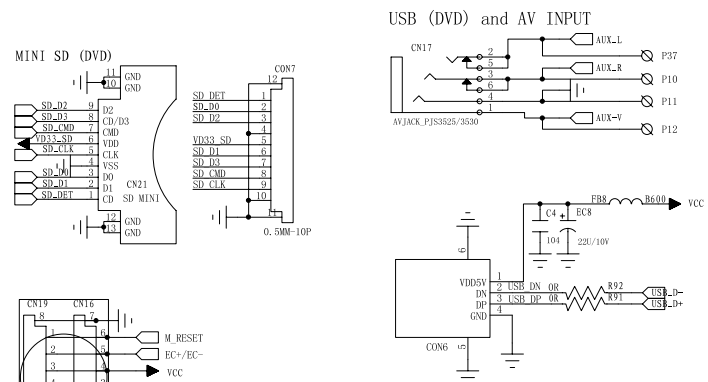
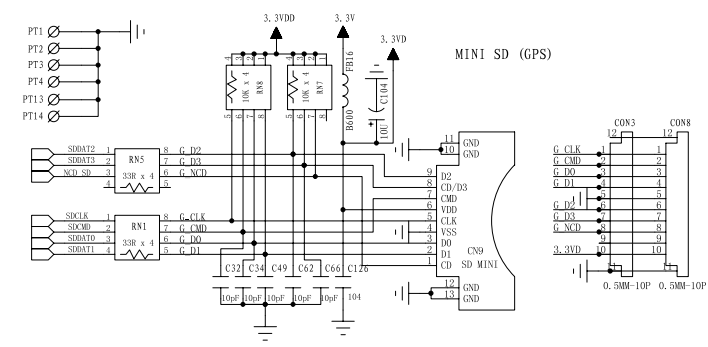
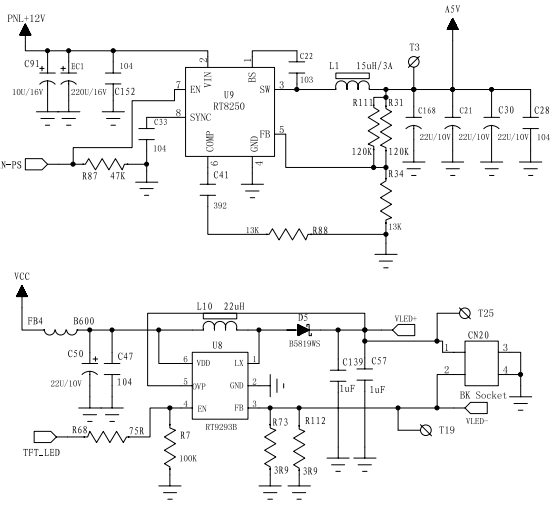
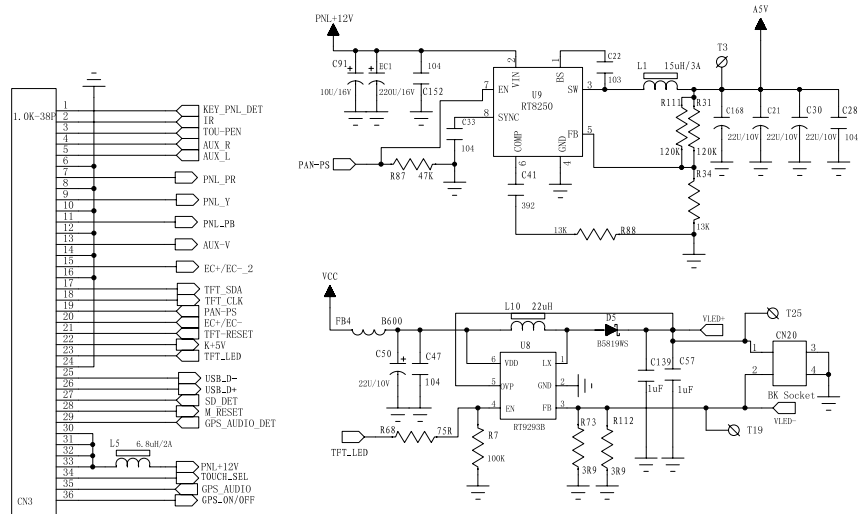






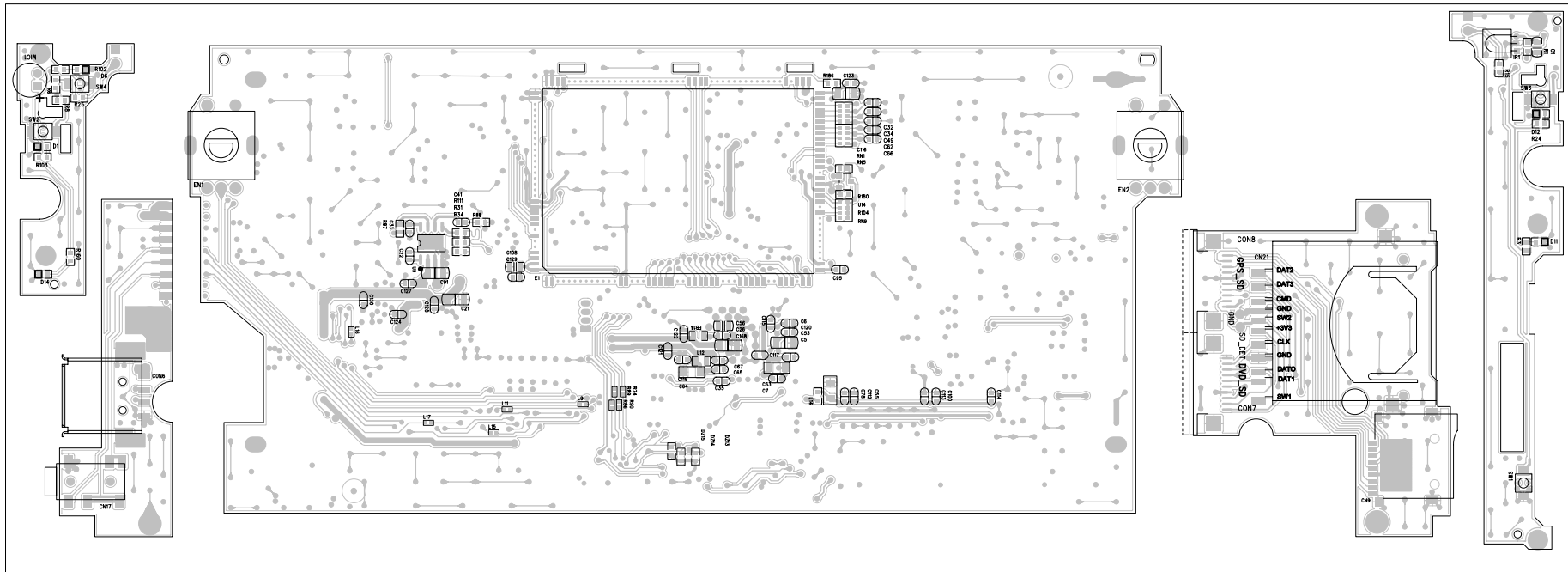


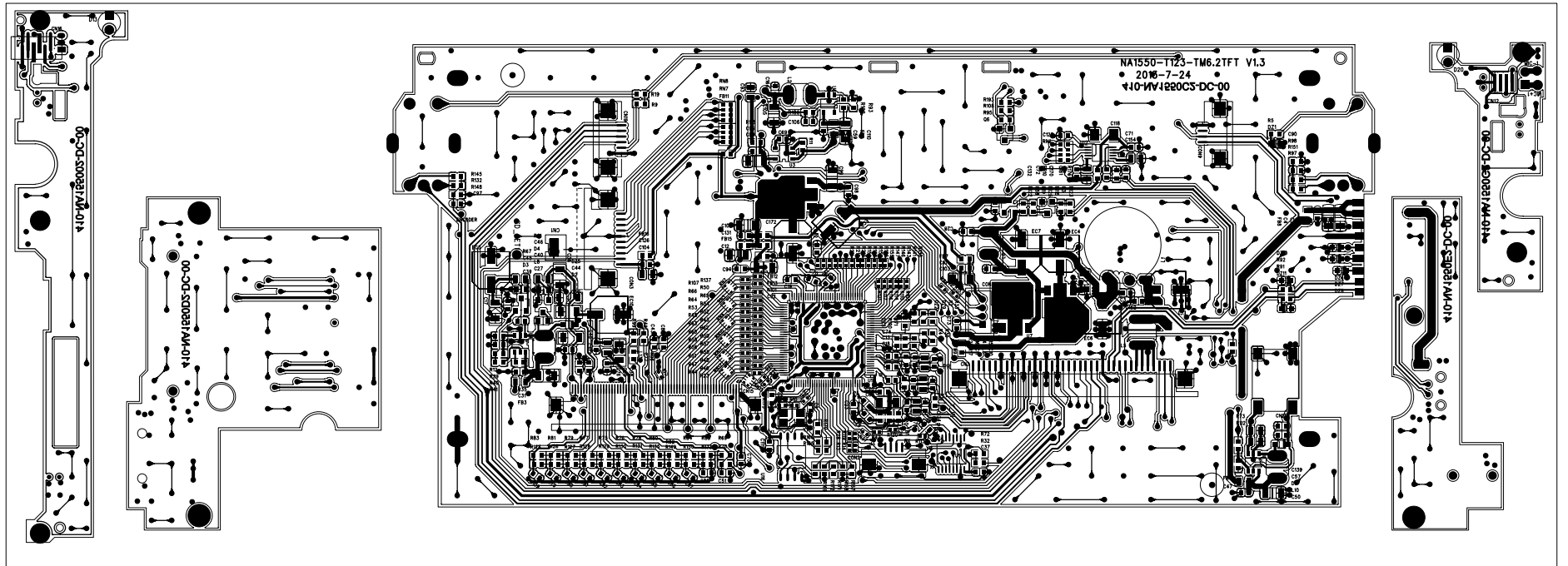


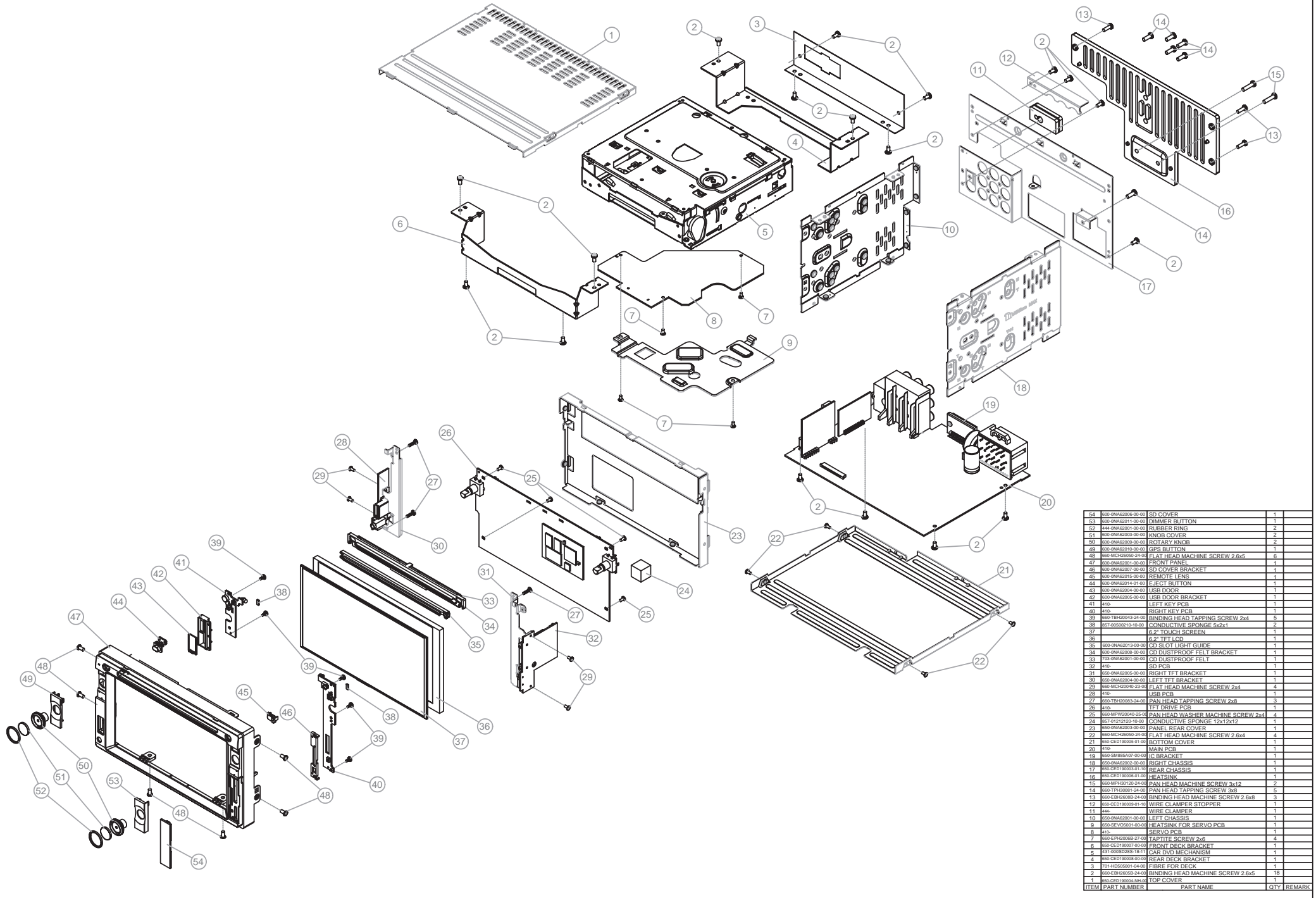


PANEL BOARD-LAYOUT DIAGAM

3-4







54	660-0NA62006-00-00	SD COVER	1	
53	660-0NA62011-00-00	DIMMER BUTTON	1	
52	644-0NA62001-00-00	RUBBER RING	2	2
51	660-0NA62009-00-00	KNOB COVER	1	
50	660-0NA62008-00-00	ROTARY KNOB	2	
49	660-0NA62010-00-00	CD BUTTON	1	1
48	660-MCH20050-24-00	FLAT HEAD MACHINE SCREW 2.6x5	6	
47	660-0NA62001-00-00	FRONT PANEL	1	
46	660-0NA62007-00-00	SD COVER BRACKET	1	1
45	660-0NA62015-00-00	REMOTE LENS	1	1
44	660-0NA62014-01-00	EJECT BUTTON	1	
43	660-0NA62004-00-00	USB DOOR	1	
42	660-0NA62005-00-00	USB DOOR BRACKET	1	
41	410	LEFT KEY PCB	1	
40	410	RIGHT KEY PCB	1	
39	660-TB120043-24-00	BINDING HEAD TAPPING SCREW 2x4	5	5
38	857-00500210-10-00	CONDUCTIVE SPONGE 5x2x1	2	
37	410	6.2" TOUCH SCREEN	1	
36	410	6.2" TFT LCD	1	
35	660-0NA62013-00-00	CD SLOT LIGHT GUIDE	1	
34	660-0NA62008-00-00	CD DUSTPROOF FELT BRACKET	1	
33	660-0NA62001-00-00	CD DUSTPROOF FELT	1	
32	410	SD PCB	1	
31	660-0NA62005-00-00	RIGHT TFT BRACKET	1	
30	660-0NA62004-00-00	LEFT TFT BRACKET	1	
29	660-MCH20048-24-00	FLAT HEAD MACHINE SCREW 2x4	4	
28	410	USB PCB	1	
27	660-TB120083-24-00	PAN HEAD TAPPING SCREW 2x8	3	
26	410	TFT DRIVE PCB	1	
25	660-MPW20045-25-00	PAN HEAD WASHER MACHINE SCREW 2x4	4	
24	857-012120-10-00	CONDUCTIVE SPONGE 12x12x12	1	
23	660-0NA62002-00-00	PANEL REAR COVER	1	1
22	660-MCH20050-24-00	FLAT HEAD MACHINE SCREW 2.6x4	4	
21	660-CED190009-01-00	BOTTOM COVER	1	
20	410	MAIN PCB	1	
19	660-SM88A07-00-00	IC BRACKET	1	
18	660-0NA62002-00-00	RIGHT CHASSIS	1	
17	660-CED190008-01-00	REAR CHASSIS	1	
16	660-CED192006-01-00	HEAT SINK	1	
15	660-MPH120-24-00	PAN HEAD MACHINE SCREW 3x12	2	
14	660-TB120081-24-00	PAN HEAD TAPPING SCREW 3x8	5	
13	660-EH400088-24-00	BINDING HEAD MACHINE SCREW 2.6x8	3	
12	660-CED190009-01-00	WIRE CLAMP STOPPER	1	
11	444	WIRE CLAMP	1	
10	660-0NA62001-00-00	LEFT CHASSIS	1	
9	660-SEV50001-00-00	HEAT SINK FOR SERVO PCB	1	
8	410	SERVO PCB	1	
7	660-EH20008-27-00	TAPETTE SCREW 2x6	4	
6	660-CED190007-00-00	FRONT DECK BRACKET	1	
5	414-000R0088-18-11	CAR DVD MECHANISM	1	
4	660-CED190008-00-00	REAR DECK BRACKET	1	
3	701-HD050001-04-00	FIBRE FOR DECK	1	
2	660-EH400088-24-00	BINDING HEAD MACHINE SCREW 2.6x5	18	
1	660-CED190008-00-00	TOP COVER	1	
ITEM	PART NUMBER	PART NAME	QTY	REMARK