

Service Manual



CONTENTS

Technical specification	1-1
Main board	
Circuit diagram	2-1
Layout diagram	2-2 ... 2-3
Panel board	
Circuit diagram	3-1
Layout diagram	3-2 ... 3-3
Exploded view diagram	4-1
Instruction Manual	page 10-21

Product Information

General

Power Supply: 12V DC (10.5-14.4V), negative ground

Fuse: 15A

Suitable Speaker Impedance: 4 -8

Aux-In level: 500mV

Audio Section

Maximum Power Output: $50W \times 4$ Channels Ω

Continous Power Output: $20W \times 4$ RMS

Pre-AMP Output Voltage: 1.5V

FM tuner section

Frequency Range: 87.5 -107.9MHz (USA)

87.5 - 108MHz (ASIA)

87.5 - 108MHz (Europe)

Usable Sensitivity: Better than 8dB at S/N 30dB

AM tuner section

Frequency Range: 530 - 1710KHz (USA)

522 - 1620KHz (ASIA)

522 - 1620KHz (Europe)

Usable Sensitivity: Better than 40dB at S/N 20dB

USB devices

USB Flash Memory: USB 1.1 & 2.0 Compatible

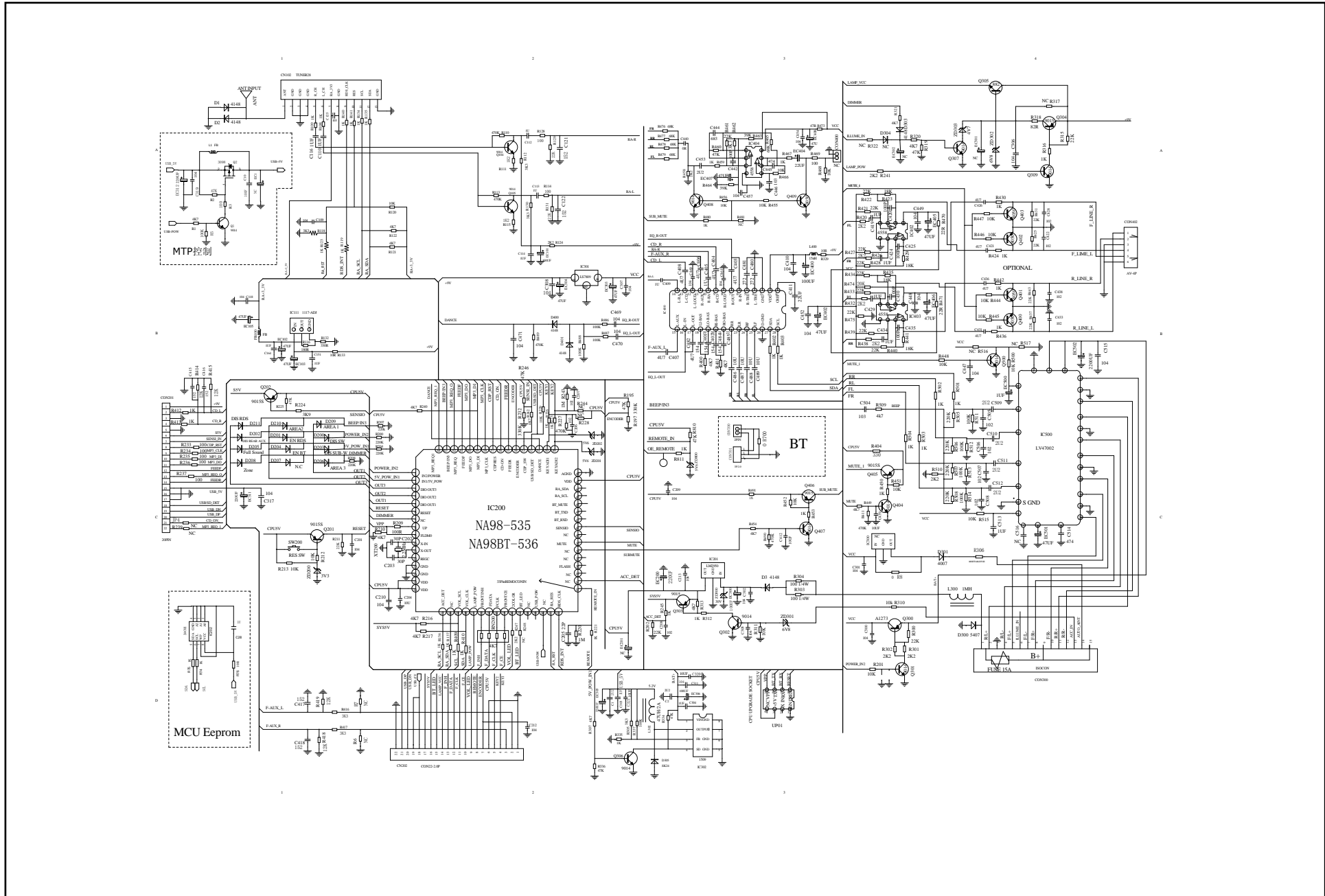
About Audio file

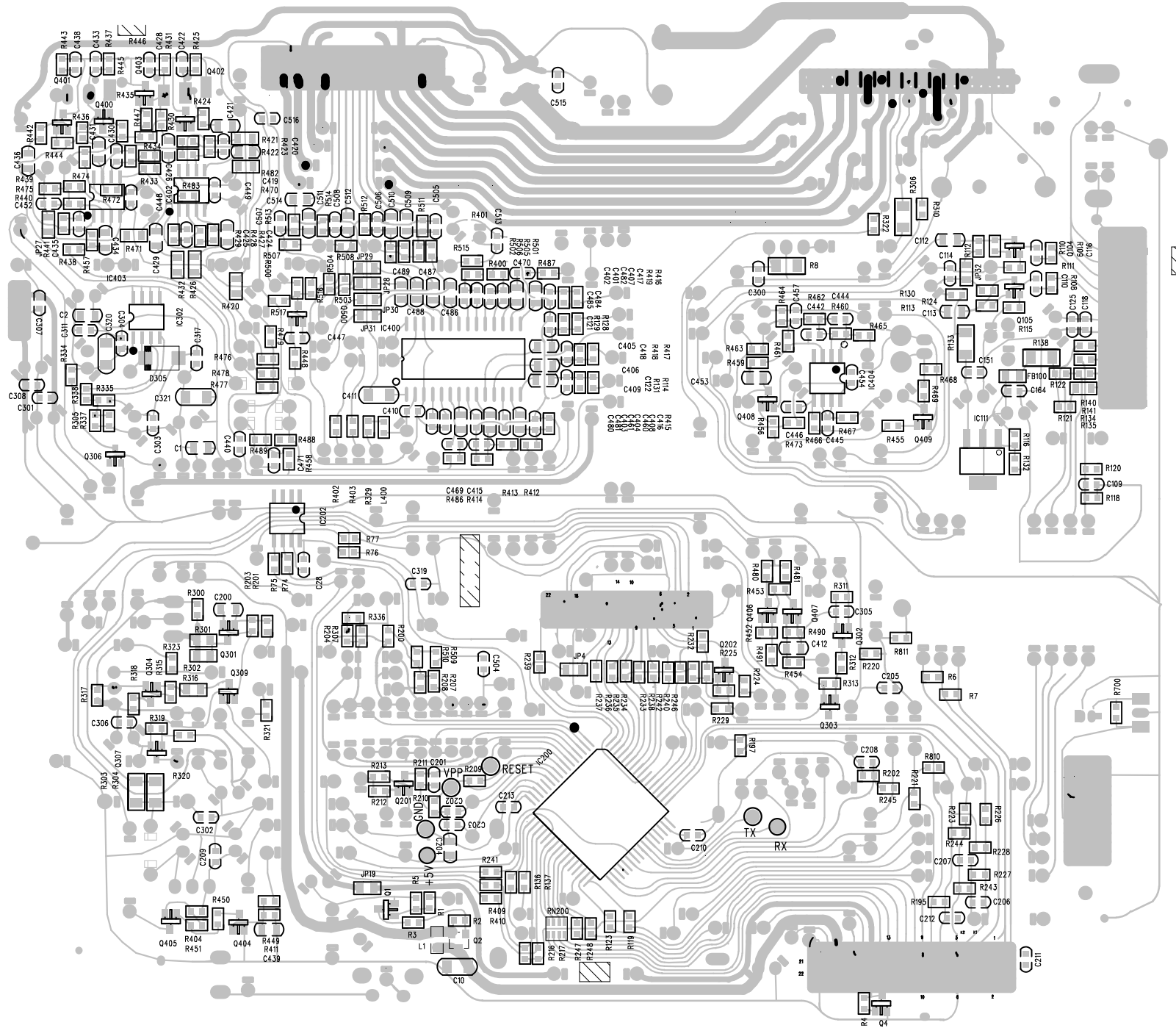
- USB or memory file system: FAT16, FAT32
- MP3/WMA bit rate: 32-320kbps and varible bit rate
- MP3 sampling frequencies: 8-48kHz
- WMA sampling frequencies: 32kHz, 44.1kHz, 48kHz
- ID3 tag v1.0 or later

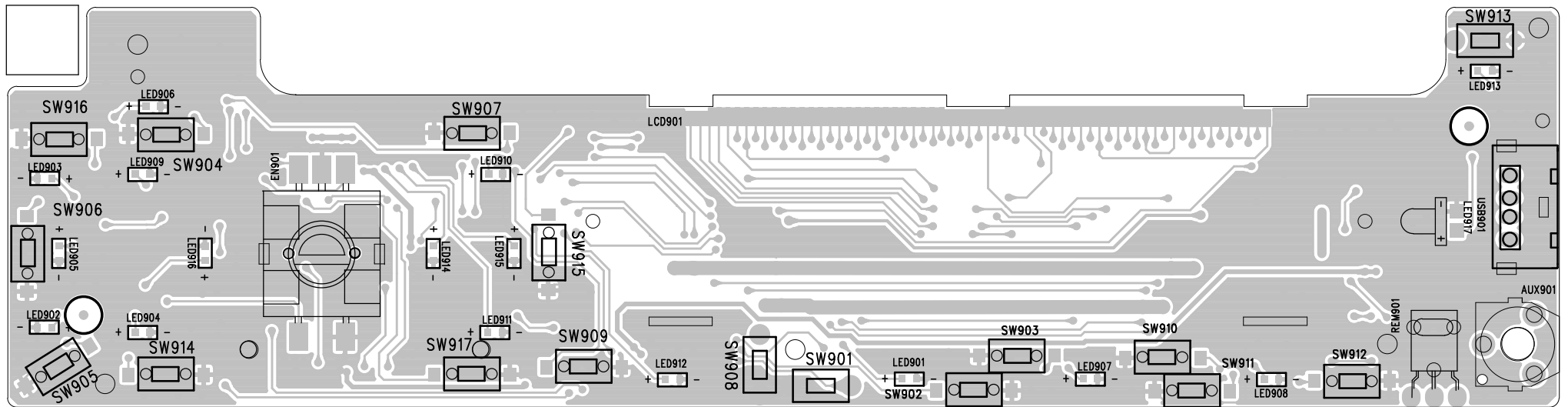
USB Smart Phone 1A charging

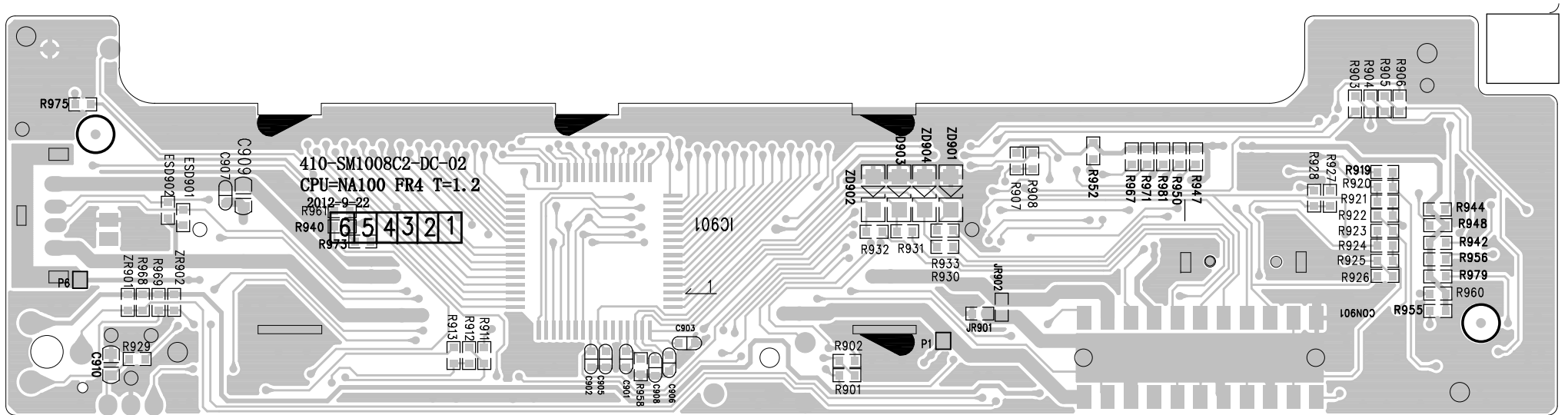
Output Voltage: 5 V DC

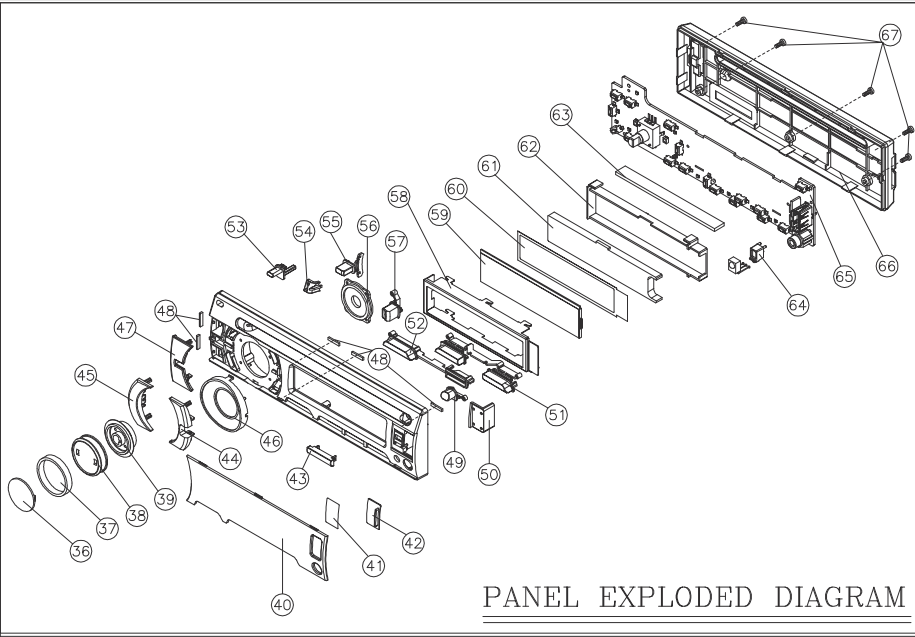
Output Current: 1000 mA (1A)



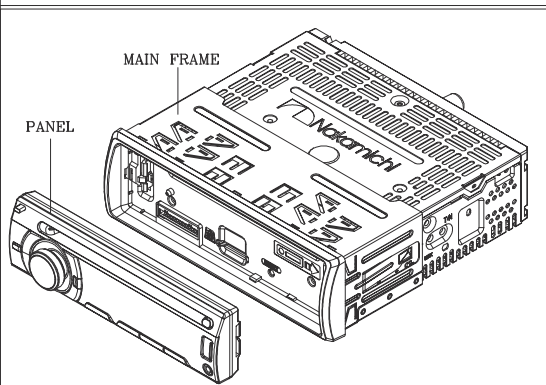




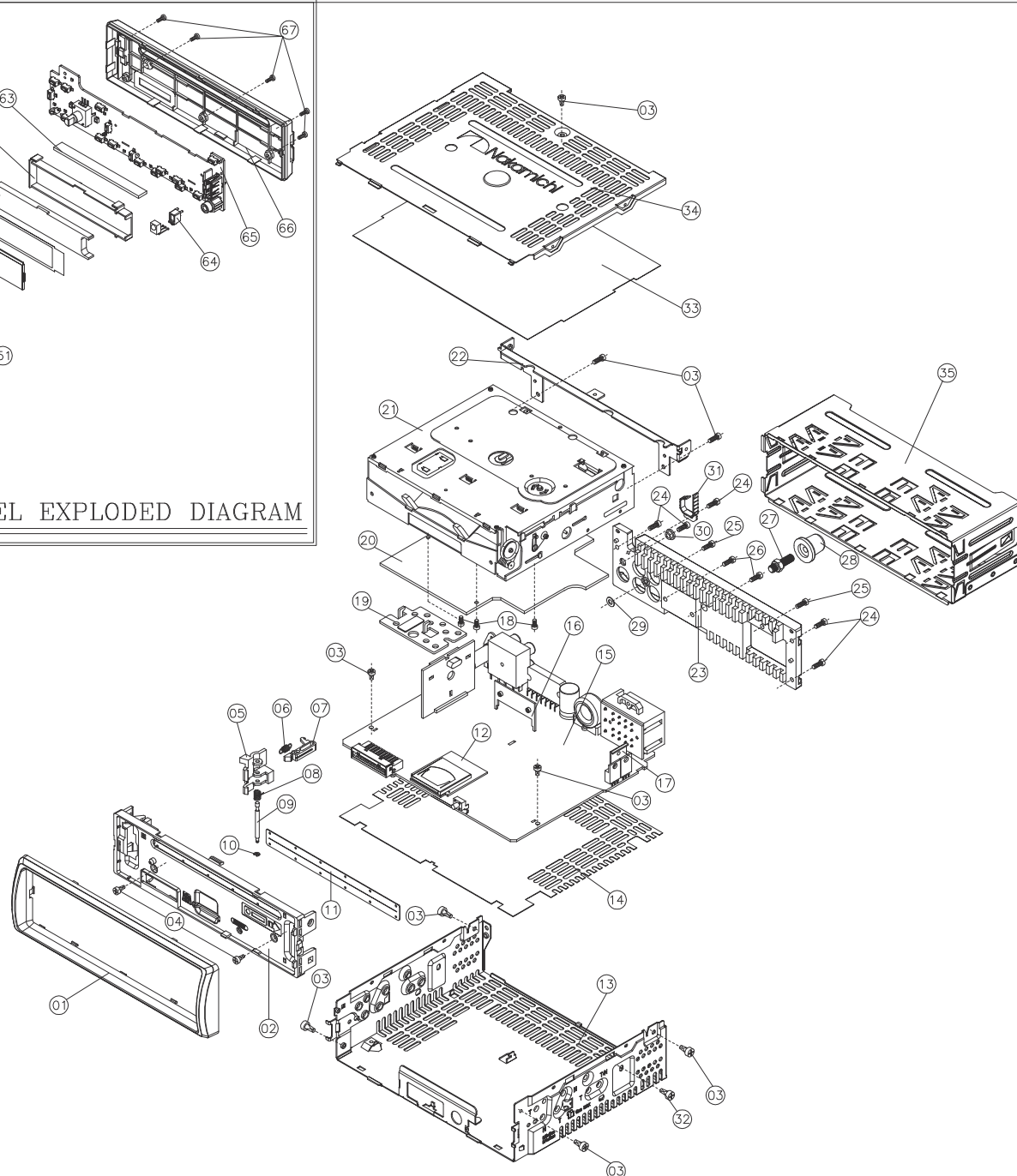




PANEL EXPLODED DIAGRAM



DETACHABLE PANEL



MAIN FRAME EXPLODED DIAGRAM

NO.	PART NUMBER	DESCRIPTION	QTY	REMARK	
67	660-TBH20083-24-00	SCREW 2.0x8.0mm	5		
66	600-SM100807-00-00	BACK PANEL	1		
65		PANEL PCB	1		
64	600-SM100826-00-00	ENSOR-BRACKET	1		
63	443-82008220-00-00	RUBBER CONTACT	1		
62	600-SM100829-00-00	LCD-HOLDER	1		
61	600-SM100830-00-00	LCD-REFLECTOR	1		
60	704-CEM200001-00-00	LCD DIFFUSION SHEET	1		
59	440-	LCD	1		
58	650-CEM200006-00-00	LCD BRACKET	1		
57	600-SM100819-00-00	BUTTON "B"	1		
56	600-SM100810-00-00	VOL-Illumination	1		
55	600-SM100818-00-00	BUTTON "A"	1		
54	600-SM100812-00-00	CD-Illumination	1		
53	600-SM100822-00-00	BUTTON "RELEASE"	1		
52	600-SM100816-00-00	SET BUTTON "D"	1		
51	600-SM100817-00-00	SET BUTTON "E"	1		
50	600-SM100824-00-00	USB Shade BRACKET	1		
49	600-SM100820-00-00	BUTTON CD Eject	1		
48	851-00852010-10-00	FOAM RUBBER 8.5x2.0,1=1.0mm	5		
47	600-SM100813-00-00	SET BUTTON "A"	1		
46	600-SM100828-00-00	VOL Adorn Ring	1		
45	600-SM100814-00-00	SET BUTTON "B"	1		
44	600-SM100815-00-00	SET BUTTON "C"	1		
43	600-SM100821-00-00	BUTTON Cover	1		
42	600-SM100825-00-00	USB COVER	1		
41	705-SM100801-00-00	PET-SHEET	1		
40	600-SM100808-00-00	LENS (USB)	1		
39	600-SM100811-00-00	VOL-KNOB "B"	1		
38	600-SM100827-00-00	VOL-KNOB "A"	1		
37	444-HD105001-10-00	Rubber Ring	1		
36	600-SM100823-00-00	TOP VOL Cover	1		
35	650-CEM200005-00-00	HALF-SLEEVE	1		
34	650-CEM200002-00-00	TOP COVER	1		
33	703-CEM200001-00-00	FELT	1		
32	660-MPH30060-21-00	SCREW 3.0x6.0mm	1		
31	650-CEM200007-00-00	WIRE-CLAMP	1		
30	600-FIX10031-00-00	Patch Plastic-PA-66	1		
29	701-CEM200002-00-00	FIBRE SHEET 7.0*3.5*0.4mm	1		
28	444-RUBND01-00-00	RUBBER COVER	1		
27	660-MHD50120-01-01	SCREW M5x12+M5x5 Hexagonal Head	1		
26	660-MPH30160-21-00	SCREW 3.0x16mm	2		
25	660-TPH30101-21-00	SCREW 3.0x10mm	2		
24	660-EBH26088-21-00	SCREW 2.6x8mm	5		
23	650-SM100803-20-00	HEAT SINK	1		
22	650-CEM200003-00-00	CD MECHANISM BRACKET	1		
21	432-OCR01AB-01-00	CD MECHANISM	1		
20	410-OUSBP00-10-00	SERVO PCB	1		
19	650-CEM20015-00-00	DRIVER IC HEAT SINK	1		
18	660-EPH2058-27-00	SCREW 2.0x5mm	3		
17	650-00093835-00-00	7808 IC BRACKET	1		
16	650-SM85A07-00-00	IC BRACKET	1		
15	410-CEM3000U-00-01	MAIN PCB	1		
14	701-SM100801-00-00	FIBRE SHEET	1		
13	650-SM100801-00-00	MAIN BRACKET	1		
12	410-00050MMC-20-00	SD PCB	1		
11	703-CEM200002-00-00	CD DUSTPROOF FELT	1		
10	661-ERM01500-04-00	"E" RING	1		
09	650-CEM200011-00-00	PIN	1		
08	650-CEM200009-00-00	SPRING "A"	1		
07	600-SM100803-00-00	PANEL LOCKER "B"	1		
06	650-CEM200010-00-00	SPRING "B"	1		
05	600-SM100802-00-00	PANEL LOCKER "A"	1		
04	660-TPH2608P-24-00	SCPFW 2.6 6	1		
03	660-EBH2608P-21-00	SCREW 2.6x5	9		
02	600-SM100801-00-00	BASE	1		
01	600-SM100805-00-00	TRIM PLATE	1		
NO.	PART NUMBER	DESCRIPTION	QTY		
NO.	DESCRIPTION	MATERIAL	FINISH (COLOR)	QTY	REMARK
DRWG	SCALE	DATE	NAME	EXPLODED DIAGRAM	
REV-01-01	1:1	DATE	NOVA/NA05/NA101	FILE	SHEET NO.
			PART NO.		AD