

# GATOR

TRADE series



**GT430EMD**  
OEM REPLACEMENT  
4.3" MIRROR MONITOR +  
DASH CAM

USER MANUAL



## 01 Introduction

Thank you for purchasing the Gator GT430EMD 4.3" Mirror Monitor & HD 1080P Dash Cam. Please ensure that you have read the product manual and instructions in full, prior to installation and use. Failure to do so may result in product failure/damage or incorrect operation and therefore impact the product performance.

## 02 Product overview

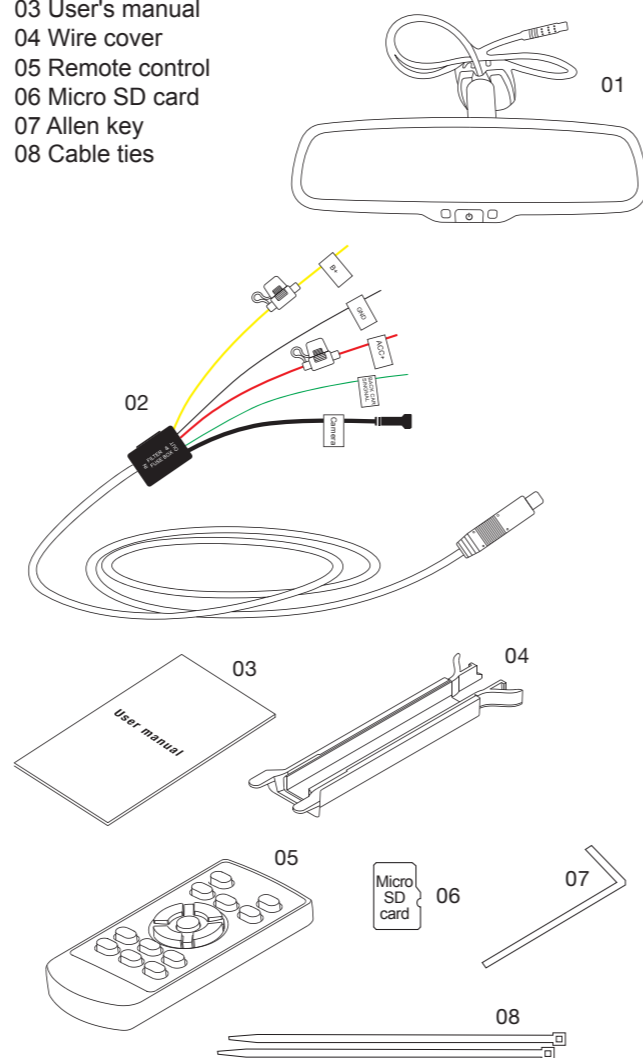
The Gator GT430EMD 4.3" Mirror Monitor & HD 1080P Dash Cam is a compliant certified OEM replacement mirror monitor, and has been designed to provide high definition recordings of your trips for security and evidence in the case of an accident. The Gator GT430EMD 4.3" Mirror Monitor & HD 1080P Dash Cam simply mounts to your windscreen and records footage onto a Micro SD memory card.

## 03 Product feature

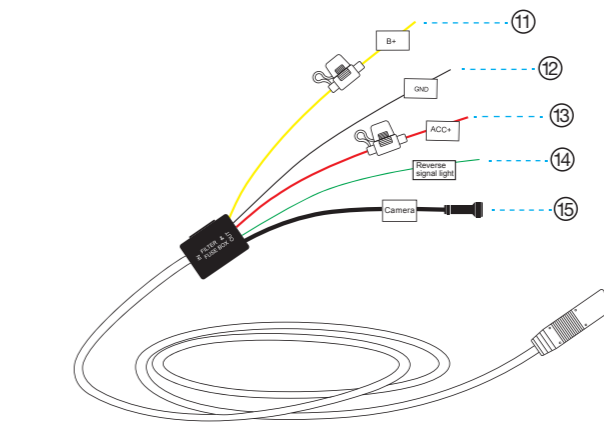
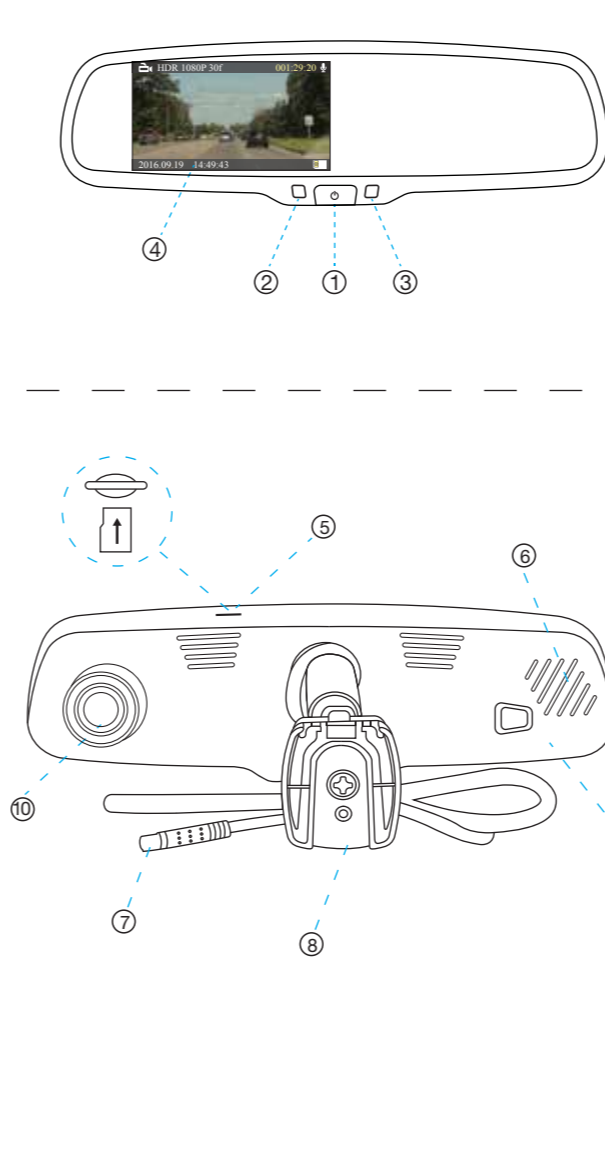
- Compliance certified OEM replacement mirror
- 4.3"16:9 High-resolution TFT display
- Anti-glare/Auto mirror dimming (Patented)
- HD 1080P Dash Cam
- HDR 1920x1080 30FPS recording
- Input for use with Gator reverse cameras (sold separately)
- Universal mounting bracket suits most vehicles
- G-Sensor function
- Auto screen off
- Car on auto record
- Parking mode
- Reverse camera display
- Automatic brightness adjustment
- Adjustable reversing guide lines
- Time and date stamp
- Built-in MIC
- 16GB Class10 Micro SD card included (supports up to 64GB)
- Dimensions 80(H) x 53(W) x 267mm(L)

## 04 Package components

- The following accessories are included
- 01 Mirror Monitor & 1080P Dash Cam
  - 02 Wiring harness
  - 03 User's manual
  - 04 Wire cover
  - 05 Remote control
  - 06 Micro SD card
  - 07 Allen key
  - 08 Cable ties



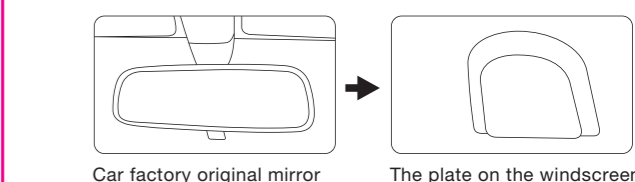
## 05 Product structure



1	Power button short press: turn the screen on/off
2	Front light sensor
3	Indicator-flashes red when in recording mode
4	4.3"16:9 High-resolution TFT display
5	TF card slot (max 64GB)
6	Speaker
7	DIN connector
8	Mounting bracket
9	Rear light sensor
10	Dash Cam camera
11	Yellow to battery 12V constant source
12	Black to GND
13	Red to ignition/acc +12V
14	Green to reverse signal light
15	To reverse camera (optional)

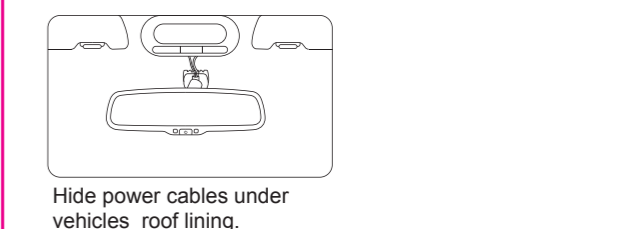
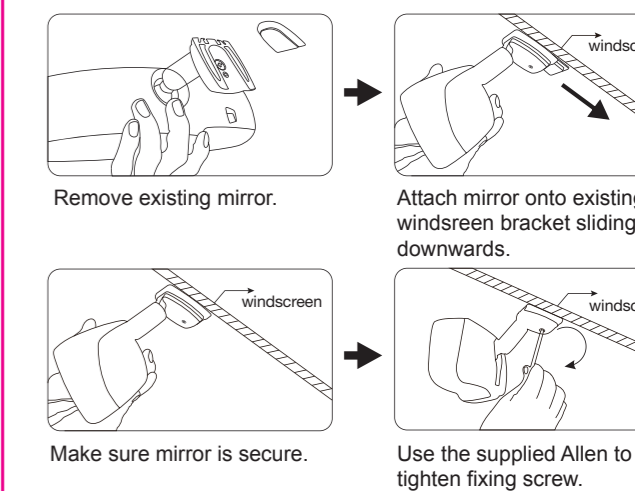
## 06 Mirror Installation

### 1. Remove the original mirror



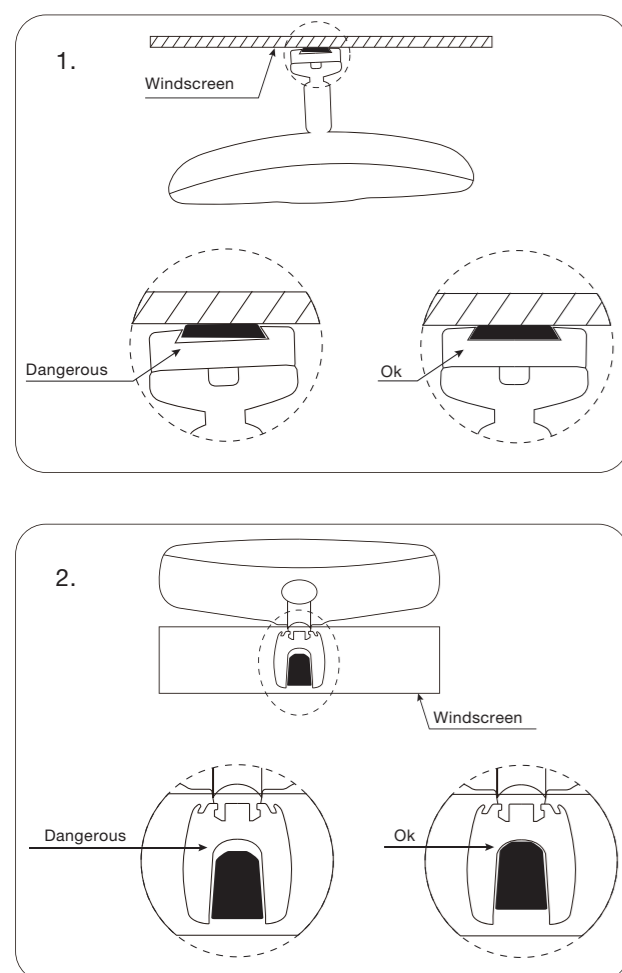
Different cars have different brackets for mounting. It depends on your vehicle maker and manufacturer. There are many methods to remove the original rear view mirror, however, please do not force the mirror off the bracket. The manufacturer will not be responsible for damage caused to your car by wrong installation of the Mirror Monitor.

### 2. Install mirror monitor on the plate



NOTE: Always use caution, DO NOT force the mount. We will not be responsible for broken windcreens. If you are not sure how to remove or re-install the mirror seek trained, qualified help.

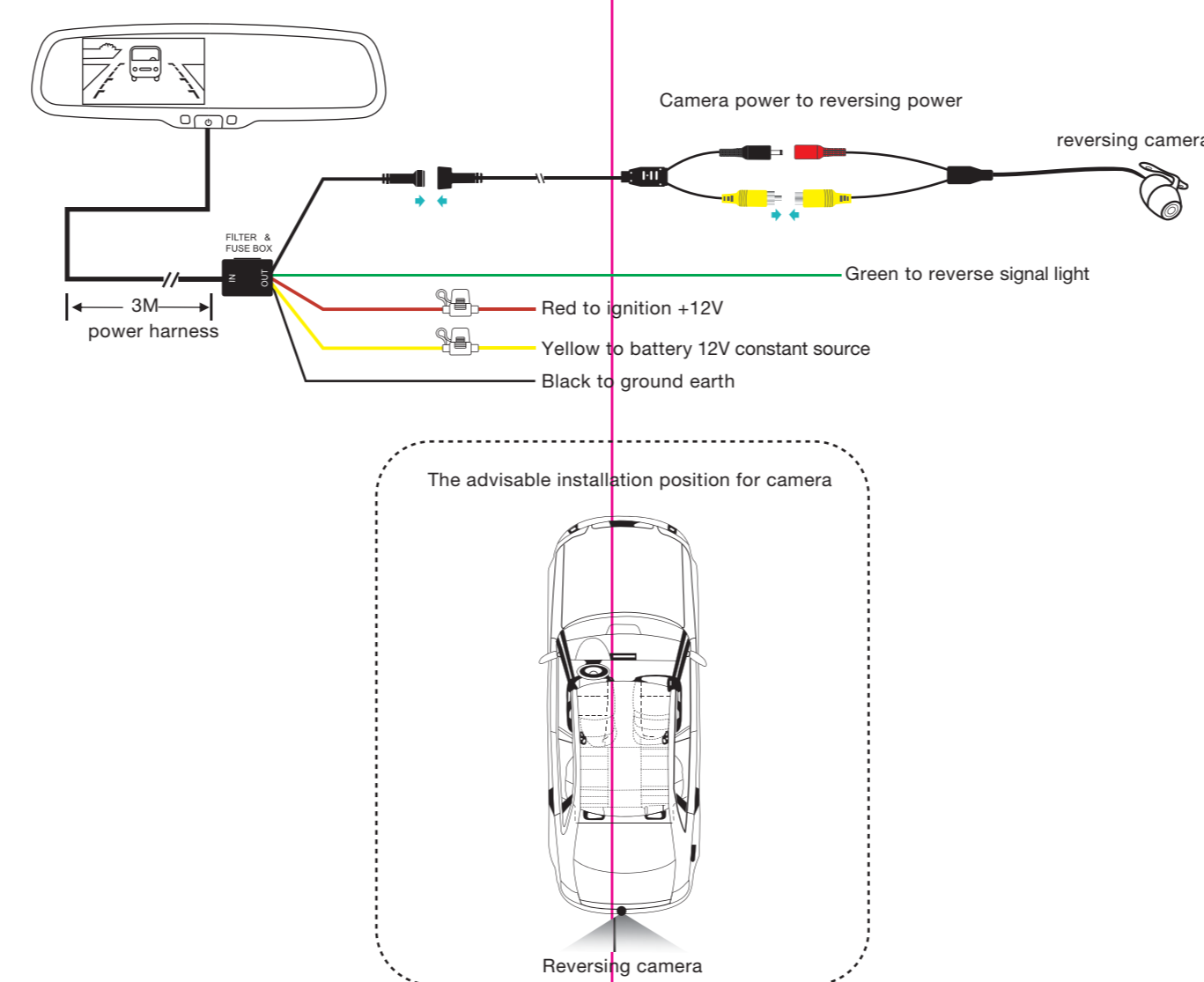
## CAUTION!



If the Mirror/Monitor Dash Cam does not fit onto your factory windscreen mount, adapter mounting brackets for other vehicles can be purchased separately through the Gator website.  
<http://gatordriverassist.com/products/accessories>



## 07 Wiring Installation



## 08 Remote control

- 1 Turn on/off the screen.
- 2 In recording mode: to start/stop recording. In photo shooting mode: to take photos. In main menu page: to choose sub-menus. In playback mode: to browse photos, play videos or stop playing back videos.
- 3 Enter or exit the settings of menu. In recording mode press to create a locked file (SOS).
- 4 To scroll up in menu.
- 5 Displays video/lock file and photo mode. In recording mode: short press to mute mic.
- 6 To scroll down in menu.
- 7 Enter guide line adjustment, press again to switch between each line
- 8 Guide line right 9 Guide line down
- 10 Guide line up 11 Guide line left
- 12 Guide line anti-clockwise
- 13 Guide line clockwise

**NOTE:**  
To exit guide line setup in reverse mode, put vehicle into neutral

## 09 Remote control functions for reverse camera

### When in reverse mode.

- 1 Access picture settings, system Settings and settings pages.
- 2 Scrolls through settings.
- 3 To adjust settings up.
- 4 To adjust settings down.

Press the Menu button to access picture functions

- Brightness: Adjusts screen brightness (0 - 40)
- Contrast: Adjusts screen contrast (0 - 40)
- Colour: Adjusts screen colour (0 - 40)
- Night Bright: Adjusts brightness (0 - 40)

Press the Menu button twice to access system settings

- Scale (turns guide lines ON/OFF)
- Language (to change language)
- Preset (ON/OFF)

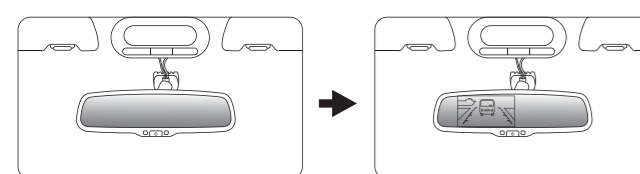
Press the Menu button three times to access settings

- Dimming darkness

Press the Menu again to exit settings

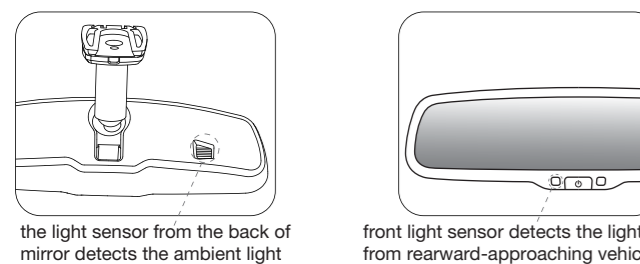
## 10 Reverse camera display

When the car is in reverse, the Mirror Monitor will automatically display the rear view camera



## 11 Auto brightness adjustment

The brightness of screen changes automatically with ambient light, allowing the driver get a clear and comfortable image when reversing.

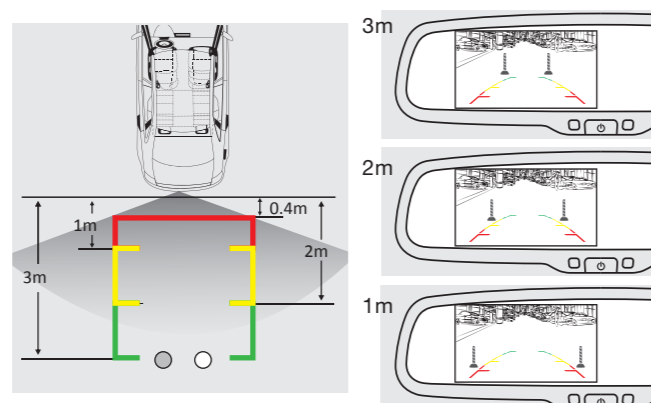


The button: Video input: short press to turn on/off auto-dimming  
Camera input: adjust brightness of screen

## 12 Adjusting guide lines

### Guide line introduction

Generally, to help drivers estimate the distance from obstacles, there are three lines for reference -red, yellow and green. Those lines are displayed on the monitor when reversing. The green line distance is 3 away from the camera. The yellow line is 2 away from the camera. The red line is 0.4m away from the camera.

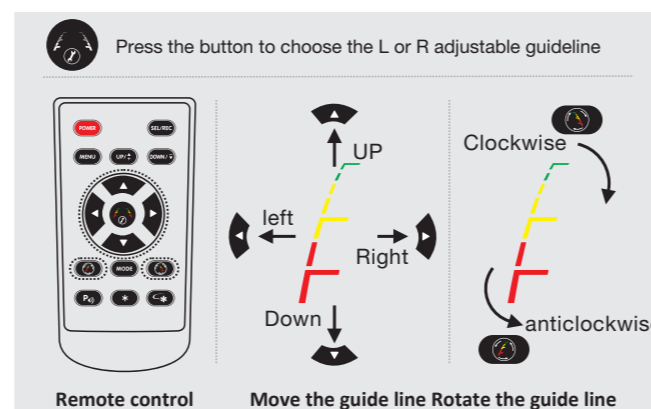


### How to adjust the guide lines

When the vehicle has engaged reverse the guidelines can be adjusted manually to allow for more accuracy. A reference object can be placed behind the vehicle and it's distance can be accurately measured with a tape measure. The adjustment can then be made with the guidelines to correspond with the reference object. Press setting button to enter "guide line adjustment" mode. The system default is to adjust the left guide line first. Press the button again to adjust the right guide line. Use the up down left and right buttons to adjust the corresponding location of the guidelines. The clockwise rotation and counter rotation buttons adjust the angles of the guidelines. On the top of the display will be the X and Y axis for the left and right guide.

Once adjustments have been made the Mirror/Monitor Dash Cam will remember the settings once reverse is disengaged.

Caution: Keep the remote control 0.5m-1.0m from rear view mirror when you use the remote to adjust the parking lines.



Guide lines are designed to assist with parking and judging distances, but should not be relied on solely when reversing.

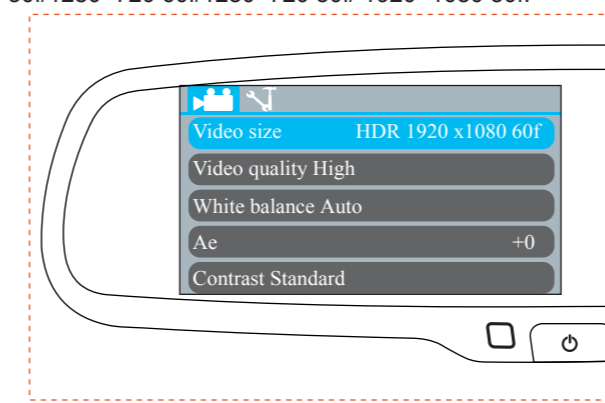
Gator has a range of reverse camera models suited for this model Mirror/monitor Dash Cam. The range features models that come with and without parking lines. Note if purchasing a model that has permanent parking lines then this takes precedent over the Mirror/monitor Dash Cam guide lines. Models with the option to turn off parking lines are the Gator G30CL and the G45CL.

## 13 Menu settings

To access settings in the menu, stop the recording by pressing the "SEL/REC" button. Then press the "MENU" button. Use "UP/DOWN" button to scroll through menu. Press "SEL/REC" button to confirm selection.

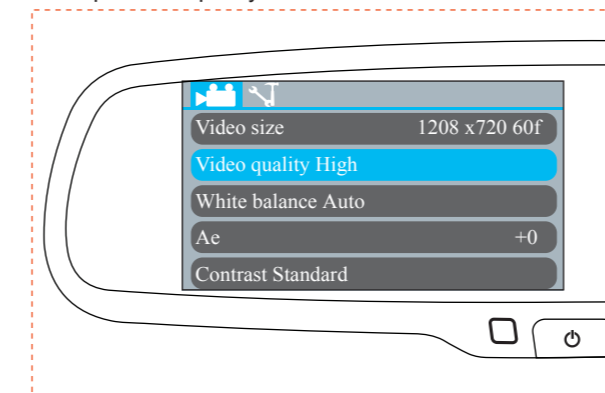
### 1. Video size

The Mirror/Monitor Dash Cam can record video in four levels of video quality. They are HDR 1920x1080 30f/1280x720 60f/1280x720 30f/ 1920x1080 30f.



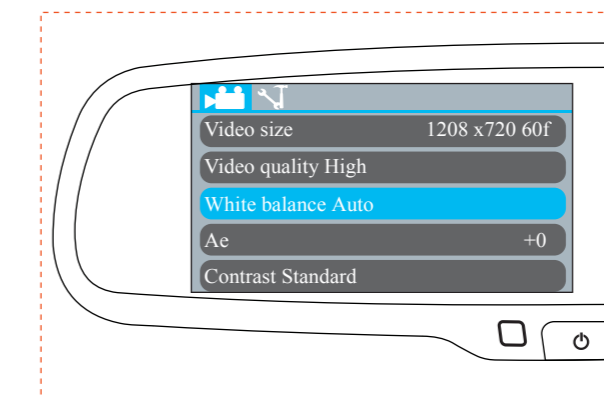
### 2. Video quality

This Mirror Monitor Dash Cam can record videos in three quality, modes, "High", "Normal" and "Low". This changes the compression quality of the recorded file.



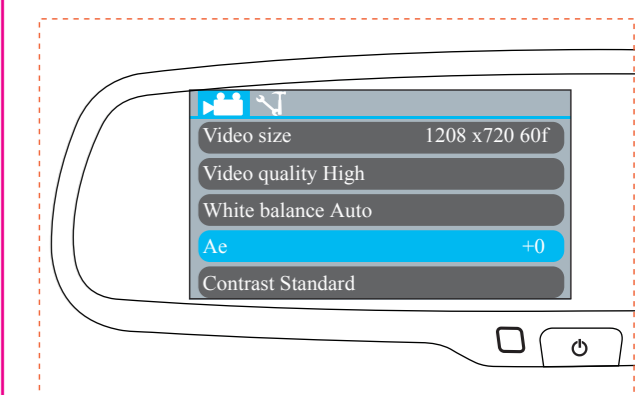
### 3. White balance

White balance (WB) is the process of removing unrealistic color casts, so that objects which appear white in person are rendered white in your photo or video. Proper camera white balance has to take into account the "color temperature" of a light source, which refers to the relative warmth or coolness of white light. Our eyes are very good at judging what is white under different light sources, but digital cameras often have great difficulty with auto white balance (AWB) — and can create unsightly blue, orange, or even green color casts. Changing your white balance settings it can help you avoid these color casts, thereby improving your photos under a wider range of lighting conditions. Settings available are Auto, Sunny, Cloudy, Tungsten and Fluorescent



### 4. AE Bias

This is to set the exposure level (EV) of the video for better recording results under different light sources. It allows you to adjust the recordings if it is too dark or too bright. You can choose from -2 to +2.



### 5. Contrast

Contrast is the difference in luminance or colour that makes an object, image or display distinguishable. Standard, soft and hard.

