



**HDDVR427**

**Instruction Manual.**

Microphone speaker /	Built-in
Television output	NTSC/PAL
TV output and DC access	5V 500MA
Battery	Built-in lithium polymer battery
System requirement	Windows 2000/XP/Vista/Windows 7 MAC OS x adove 10.3.6

**Note: we reserve the modification right of the machine design and specifications without notice.**

#### Accessories list

1. Vehicle-mounted power supply; 2.Back holder; 3.Vehicle mount;
- 4.GPS module; 5.User manual.

Thank you for choosing the GATOR HDDVR427 recorder.

Besides general functions of the recorder, this HDDVR427 has three main features:

- (1) Built-in double lens can be used to take two images, front and back at the same time.
- (2) GPS module can record the whole driving track. Using specialized software, you can view the Recordings on your computer, at the same time connect to Google maps via the Internet. The Driving track shows on the map and you can trace the running route of the vehicle.
- (3) Built-in gravity sensor G-Sensor can record the gravity sensing information. Using random specialized software, you can see the Recordings on your computer, at the same time read the gravity sensing data to trace accident and abnormal circumstance occurred in the running process.

In order to maximize the performance of the HDDVR427 recorder, please read this instruction manual carefully before use (This machine and accessories for the design and specifications are subject to change without prior notice).

# Content

<b>Product Structure</b> .....	1
<b>Begin to use travelling recorder</b> .....	3
Battery Charging	
Insert a memory card	
Adjust the positions of the lens	
Turn on and turn off	
<b>Basic operations of the travelling recorder</b> .....	4
Change operating mode	
Setup menu	
System setting	
How to Record	
Start / Stop Recording	
Mute audio	
Video playback and file management	
Video playback	
<b>Computer access to the machine file</b> .....	5
<b>Reset of this machine</b> .....	9
<b>Product characteristics</b> .....	9
<b>Technical Specifications</b> .....	9
<b>Accessories list</b> .....	10

## Resetting the HDDVR427:

When abnormal circumstances occur due to improper operation, you can press the reset button this will restart the HDDVR427, the HDDVR427 will return to normal functionality.

### Product characteristics:

—Ultra small volume, front lens with ultra wide angle of 140 degrees can be rotated up and down 20 degrees; a back lens with ultra wide-angle of 120 degrees high resolution. This perfect modular design is more convenient for various angles and high resolution video Recording.

—Built-in 1/4 inch low-noise and high-quality photographic element can capture ultra clear pictures in a dark place.

—Built-in lithium battery will continue charging while in recording mode.

—Built-in microphone and speaker.

—Supports high-capacity Micro SD Card

—Automotive turn on and recording function when the vehicle starts.

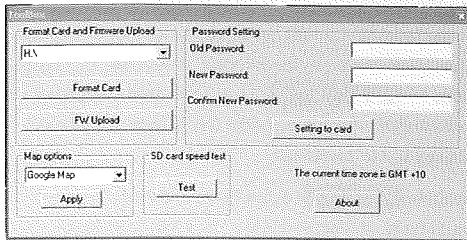
—Delayed start function to prevent transient pulse current to prevent damage to the HDDVR427 at the point of vehicle starting.


—GPS scanning and positioning.

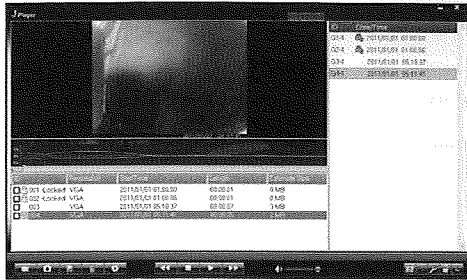
—Gravity induced SENSOR.

### Technical Specifications


LCD screen size	2.6" ( 16: 9 )
Lens	Front lens with ultra wide angle of 140 degrees; back lens with ultra wide-angle of 120 degrees
Optional language	English / German / French / Spanish / Italian / Portuguese / Traditional Chinese / <u>Simplified Chinese</u> / Japanese
Video format	AVI
Memory card slot	Micro SD






9. Google maps: Click , and the computer will connect to Google maps via the Internet and show the travelling path of the vehicle on the map.

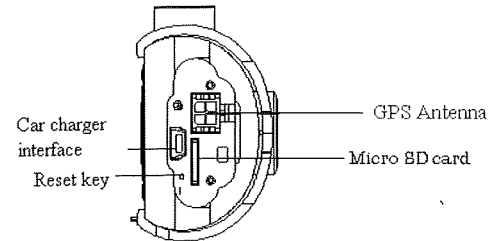
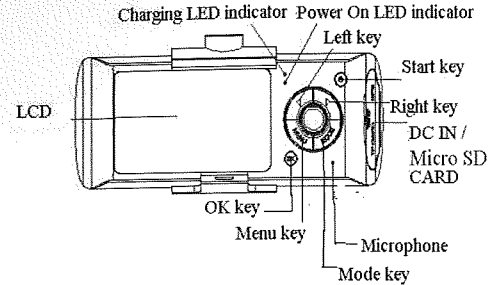


10. Gravity sensor:

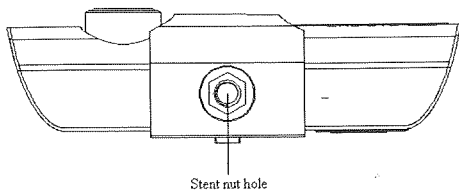
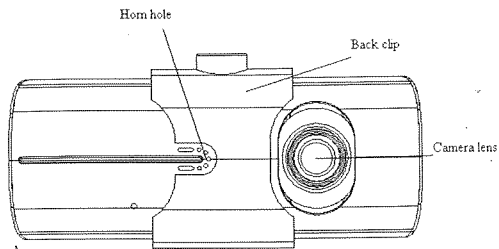
Click , to watch the video on the computer, at the same time you can read and display the gravity sensing data, trace accident and abnormal circumstance occurred during the driving process.

11. Other operations:

Click , ,  respectively from left to right, and the following operations can be accessed: repair film / unlock protection / choose to display size.



### Product Structure



Select the Micro SD Card disk path, then click the "apply" button to load and automatically play the documents on the card.

Clicking the ActiveX can control the playing state: from left to right : slow turning / stop / play (pause) / fast turning.

4. Selecting double lens channel:

Clicking the ActiveX can select the double lens channel of video playing: double lens / front lens / back lens.

5. Video on file:

Select the video file for save  and click to pop up the saving file path picture. After selecting, click "sure" to save the selected file.

6. Photos on file:

Select the image photo, to save, click to pop up the saving file path picture. After selecting the path, click "save".

7. Deleting documents:

Select the video file not needed  and click . "sure/ cancel" options will appear, select "Sure" to delete the selected video file.

8. Kit:

Kit is as follows: SD card formatting / upload software to the SD card / SD card speed test / map selection and user password setting.

Click to enter the kit.

done via this software.

**Notice:**


- (1) For easy use and to avoid any abnormal circumstances of the storage card causing software tool damage, it is recommended to backup the software on your computer.
- (2) The computer operating system must be Windows 2000 / XP / Vista / Windows 7

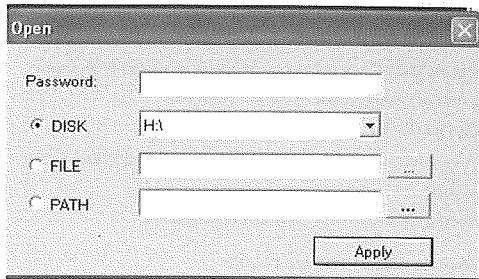
Usage of the software (ADR Player X2 Player.exe JWD Technology Co.):

1. Use a card reader to read the video information on the Micro SD card.

In the Micro SD card disk under "my computer", the user can see

three files: ap.bin, Default\_Folder.ini and (ADR Player X2 Player.exe JWD Technology Co.).

2. Run (ADR Player X2 Player.exe JWD Technology Co.).
3. Open the player to play the video documents.  
Click  to open the player.



**Begin to use HDDVR427 recorder**

**Battery Charging**

There are two methods for battery charging:

1. Using a USB cable to connect the machine with the computer for charging.
2. Using accessory vehicle-mounted power source for charging. In the whole process of charging, the charging indicator lights up in red. When the charging is finished, the light indicator will automatically turn off. The whole charging process takes about 240 minutes.

**Insert a memory card:**

Insert a Micro SD memory card into the slot in accordance with the indicating direction on the body until you hear a "Click" sound.  
Remove card: Push the Micro SD card inside and the card will pop up. Then you can remove Micro SD Card.

**Notice:**

When using the memory card in the HDDVR427 for the first time, the HDDVR427 will require the Memory card to be formatted. you must use the HDDVR427 to format the memory card as it will attach

(ADR Player X2 Player.exe JWD Technology Co.) software so you can view your recordings. Note: Formatting will permanently delete all the data on the memory card, including the protected images, which can not be restored. Therefore, before formatting the memory card, please back up important data.

**Adjust the positions of the lens:**

The front lens of the HDDVR427 can be turned 20 degrees up and down in order to better meet the recorder's fixed position and improve recording.

**Turn on and turn off:**

Turn on: press power button for 2-3 seconds until red ON indicator lights up.

Turn off: press power supply button for up to 5 seconds until red ON indicator turns off.

**Notice:**

When in low battery, the HDDVR427 recorder will automatically turn off.

**Basic operations of the HDDVR427 recorder:****Change operating mode:**

The HDDVR427 has two operating modes: Record mode and playback.

Press the MODE button to change between them.

**Setup menu:**

Press the MENU button to enter the MENU page, the column of "Menu setting" will appear in a blue background.

In the menu settings page, click left and right keys to select through the required setting fields, click the "OK" button to accept the settings, press the MENU key to exit the menu.

System settings: You can make the system settings in the framing preview mode.

Video mode: choose between double lens /front lens /back lens;

Time setting: press the left and right keys to adjustment the time. Press the OK key to confirm and exit.

Formatting: press the OK key to enter and select Yes/No;

Video format: NTSC/PAL setting;

Voice: On/Off;

Recording: On/Off;

Language: English / German / French / Spanish / Italian / Portuguese /

Traditional Chinese / Simplified Chinese/ Japanese

Screen preset: On/Off;

Automatic video protection sensitivity: low / general / high / automatically turn off video protection function (This function set gravity sensor to start up automatic video recording sensitivity).

Frequency: 50HZ / 60HZ.

**How to Record:****Start / Stop Recording:**

In the Recording mode, press the 'OK' key to start Recording, then press the 'OK' key to stop Recording.

When the HDDVR427 recorder is on with a memory card inserted, it will automatically start Recording.

**Mute audio:**

During video recording process, pressing the left key will mute/un-mute the audio in the video.

**Video playback and file management:**

Press the MODE key to enter the playback mode until the screen shows a playback picture of the last video file.

**Video playback:**

Press the left and right buttons to select the audio and video files to playback.

Press the OK key to play and pause the video file.

**Computer access to the machine file**

This machine does not support USB protocol. Insert the Memory card into a Computer via a memory card reader to access the Recorded files.

When you insert the memory card and complete formatting for the first time, it will automatically generate specialized software on the memory card. Computer access to the file of the HDDVR427 must be