

# GATOR



## GHOVR360

FULL HD 1080P  
DASH CAM



## Manual



Resolution



Screen Size



Wide Angle



Super  
Capacitor



G Sensor



Adhesive  
Window Mount

## Introduction

Thank you for purchasing the Gator GHDVR360 FULL HD 1080P Dash Cam. Please ensure that you have read the product manual and instructions in full, prior to installation and use. Failure to do so may result in product failure/damage or incorrect operation and therefore impact the product performance.

## Product features

- FULL HD 1920x1080 @ 30FPS
- 2.5" High-resolution LCD screen
- 160 Degree HD wide angle lens
- Super Night Vision with WDR
- Super capacitor
- G-Sensor function
- Seamless cycle loop recording
- 270 Degree camera lens rotation
- Adhesive car mount
- 8GB Micro SD card included
- Supports Micro SD card class10 up to 32GB
- CMOS Sensor
- DC 12/24V car charger

## Table of Contents

Introduction.....	2
Product features.....	2
Table of contents.....	3
Package components.....	4
Product structure.....	5
Installation of Dash Cam.....	7
Fixing the Dash Cam.....	8
Universal hard wiring kit.....	8
Video and Photo operation.....	9
Dash Cam modes and settings.....	10
Instructions for video and photo operation.....	11
Video features.....	12
Video/Photo settings.....	13
Photo features.....	15
Accessing files via your computer.....	16
Super capacitor battery.....	17
Formating the SD card.....	17
Locking video footage .....	17
Product specifications.....	18
Trouble shooting guide.....	19
Safety information & warnings.....	20
Infringement of copyright warning.....	20
Technical assistance.....	21

## Package components



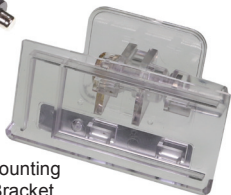
GHDVR360



Car Charger

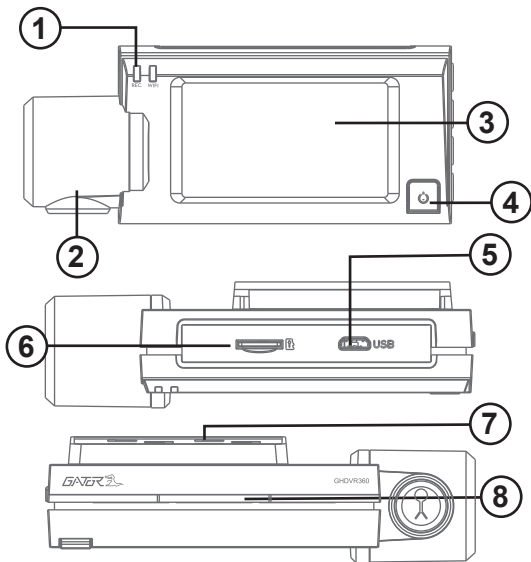


8G Micro SD  
Card

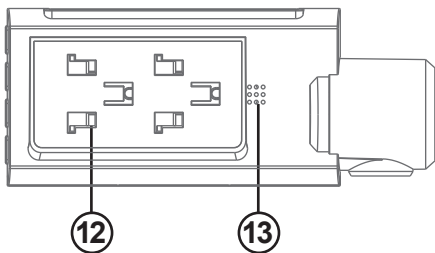
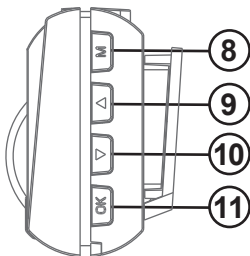


Mounting  
Bracket

## Product structure



- |                              |                        |
|------------------------------|------------------------|
| 1) Recording indicator light | 5) Mini USB input      |
| 2) Rotating lens             | 6) Micro SD card input |
| 3) Display screen            | 7) Mounting base       |
| 4) Power ON/OFF              | 8) LED light           |



8) Menu/Mode button

9) Arrow UP button

10) Arrow Down button

11) OK button

12) Mounting base

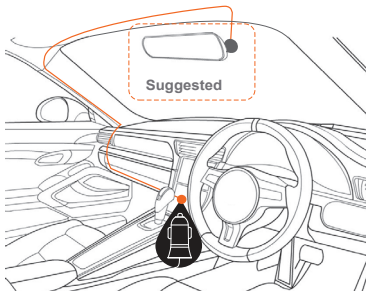
13) Speaker

14) Mounting base

## Installation of Dash Cam

1. Check orientation of the Dash Cam camera first before installation.
2. Ensure windscreen is clean and free of debris. Use an Alcohol wipe to enhance adhesion.
3. Place mounting bracket on Dash Cam. Remove backing off 3M tape and press & hold firmly to windscreen for 60 seconds.
4. Fix where the vision is not blocked (Place close to rear-view mirror is recommended). Do not install the device on airbag or within its working range.
5. Insert Micro SD card into the Dash Cam
6. Insert Mini USB end of the power cord into the Mini USB interface/ charging point of the Dash Cam. Connect charging end of the cable into 12V power socket of vehicle.
7. Adjust the mounting bracket and rotate the camera direction to get the best view. Ensure  $\frac{1}{4}$  of the vehicles bonnet is visible from the bottom of the screen for alignment.
8. Turn vehicles ignition to accessories and the Dash Cam will power ON and start recording automatically, you will hear an audible tone once powered.
9. The recording indicator light will start flashing RED. A red circle will also flash on the screen and a red timer will appear when recording has started.
10. For the Dash Cam to work it must receive power from the charging adapter. Once power is removed or turned off the Dash Cam will save the current file and turn off.

## Fixing the Dash Cam



### Universal hard wiring kit GUNIHWC (Sold separately)



This can be purchased separately from your retailer to hard wire your Dash Cam to your vehicle.



## Video and photo operation

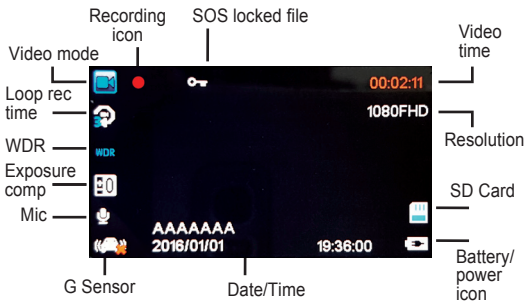
### Video Mode:

There is a video camera icon at the top left corner of the LCD to signify you are on video mode. The recording indicator will start flashing RED. A red circle will flash on the screen and a red timer will appear when recording has started.

To stop the recording, simply press the [OK] button.

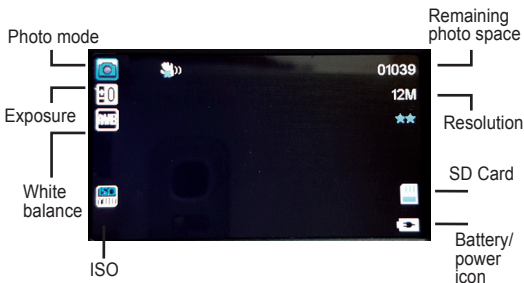
To resume press recording press [OK] button.

When recording press the [Menu/Mode] button to lock the recorded video. A key symbol will appear when activated.



## Photo Mode:

There is a photo camera icon at the top left corner of the LCD to signify you are on photo mode. To take a photo press the [OK] button and you will hear a shutter click sound. Briefly the photo will display on the screen.



## DASH CAM modes & settings

To switch between video, photo and playback modes, press and hold the [Menu/Mode] button. Quick press the [Menu/Mode] button again to show Function and Settings menu for each mode. Press the [arrow] buttons to choose between Function, Settings or X icon to exit. Press the [OK] button to activate. Use [arrow] buttons to move through menus, [OK] button to confirm selections.

## Instructions for video and photo playback

### 1. [OK] Button

In playback mode, short press the [OK] button to play/pause the video.

### 2. [Menu/Mode] Button

In playback mode, short press the [Menu/Mode] button to stop the video. Long press to exit playback

### 2. [Arrow Up] Button

Rewind function: In playback mode, short press the [Arrow Up] button to fast-rewind with 2X/4X/8X speeds available. Short press [Arrow Up] to the next/previous video. When in pause mode press [Arrow Up] to stop playback.

### 4. [Arrow Down] Button

Fast-forward: In playback mode, short press [Arrow Down] button to fast-forward with 2X/4X/8X speeds available.. Short press [Arrow Down] to go the next video.



## Video features

### **Resolution:**

Three resolutions are available. 1080FHD, 720P & 480P  
Recommended resolution is 1080FHD.

### **Loop recording:**

This feature allows you to set the size of the files your Dash Cam will record before saving and creating a new file. It allows the Dash Cam to record over the oldest recorded files once the card is full. This can be turned OFF, or record 1,3 & 5 minute video files. If you want to keep any of the files it is best to upload them to your computer. We recommend the Dash Cam to be set to '3' minute files.

### **WDR:**

Wide Dynamic Range is used to achieve greater exposure to dynamic range than normal digital image technology and make video and pictures look better more luminous.

### **Exposure:**

This feature will change the light and dark balance of your photos. We recommend it always be set at '0'.

### **Record Audio:**

This Feature will allow you to turn the Dash Cam's recording sound on or off. If you want to stop the Dash Cam recording sound in the cab of your vehicle, set this feature to 'off'.

## Video/Photo settings

### **Date stamp:**

This feature will stamp the date and time on all your footage produced by your Dash Cam.

### **Gravity sensing:**

This feature allows you to set the sensitivity of the Gravity sensor in the Dash Cam. In event of an impact the Dash Cam will take a locked video. Settings are OFF, Low, Medium & High. We recommend this be set to 'LOW' to help stop false or irrelevant readings. Note: With this function turned on it may fill up the SD card with locked video files. Re-format the SD card to create space. The device does NOT guarantee video recording of all accidents as built-in impact sensor may not be activated due to combination of user settings and the level of impact during the collision.

### **Date/Time:**

Change the year, month, day and time. To change the date simply use the arrow keys to go up or down. Press the [OK] button to move onto the next section. Again, use the [arrow] buttons to go up or down. Once through all the sections, press [Menu/Mode] button to exit.

### **Beep Sound:**

Allows you to turn the beeping sound on or off when pressing buttons.

### **Language:**

Allows you to choose between multiple languages.

## Video/Photo settings cont...

### **Screen Saver:**

This feature will turn your LCD display screen off after 30 seconds, 1 or 2 minutes but will continue to record regardless. This feature is useful for night driving as having the LCD on could be a distraction. Turn the display screen off/on manually quick press the power button.

### **LED:**

Allows the user to turn the LED light under DASH CAM on or off.

### **Plate Number:**

Enter your vehicles number plate to display on recorded video or photos.

### **Format:**

This feature allows you to format/delete all the files off your micro SD card.

### **Default Setting:**

This feature will reset all your settings and return your Dash Cam to the factory standard settings.

### **Version:**

This simply shows the firmware/software employed by the Dash Cam's hardware.

## Photo features

### **Capture Mode:**

Timer shooting modes. Single, 2, 5 and 10 second timer.

### **Resolution:**

Resolutions available are 12M, 10M, 8M, 5M, 3M

### **Sequence:**

This feature will change allow you to take multiple photos with one click

### **Quality:**

Fine, Normal & Economy

### **Sharpness:**

Strong, Normal & Soft

### **White Balance:**

Auto, Daylight, Cloudy, Tungsten & Fluorescent.

### **Color**

Color, Black & White or Sepia

### **ISO:**

Auto, 100, 200 & 400

### **Exposure**

This feature will change the light and dark balance of your photos. We recommend it always be set at '0'.

### **Anti-Shaking:**

To help with motion blur when taking photos.

### Quick Review:

Used for viewing images as a slideshow.

### Date Stamp:

Used for displaying date and time on photos taken

## Accessing files via your computer

To access video and images from your Dash Cam, remove the SD card and use a card reader to connect to your computer. An icon called **VOLUME1** for (Apple Users) will appear. Inside will be a folder named **CARDV**.

For (PC Users) storage device will appear called **CARDV**. Inside the folder will be 3 folders named:

**MOVIE:** folder is for video files

**RO:** folder is for locked files

**PHOTO:** folder is for picture files



## **Super capacitor battery**

If your Dash Cam is not used for an extended period, the time and date will default to factory settings.

## **Formatting the SD card**

It is advisable to format the card weekly if you have the Gravity Sensing setting turned on, or create locked files. This will fill up the card causing it to stop recording any footage.

## **Locking video footage**

Press [Menu/Mode] button on the side of the display to activate the lock footage function. A key icon will display on the screen. This will lock the file currently being recorded to prevent it being recorded over. To remove locked footage from the Dash Cam you must format the card on the device or a computer.

## Product specifications

Display	2.5" High-resolution LCD screen
Color	Black
Video	MP4
	Full HD 1920*1080P @ 30fps
	720P 1280*720
	480P 640*480
Picture format	JPG
Picture	12M, 10M, 8M, 5M, 3M, 2M
Viewing Angle	160 degree view angle
Functions	Super Night Vision, G-Sensor, Loop recording
OSD Language	Multiple
Audio	Built-in Microphone and speaker
Storage	Micro SD card (8GB inc) 32GB Class 10 Max
Input / Output	Mini USB (Power)
Battery	Super Capacitor
Car charger	DC input: 12 or 24V, output: 5V
Dimension	47*113*50mm (H*W*D)
Accessories	Adhesive window mount, Car charger

## Troubleshooting guide

If there are problems with the device, please refer to the following methods to resolve.

Cannot take pictures or record video?

Please check whether there is enough space on the micro SD card or internal storage.



Stopping automatically while recording?

Due to the high amount of HD video data being recorded, please use a high-speed Micro SD card. To tell if you have the required high speed card, check if it has the 'Micro SDHC' logo on the SD card and 8GB class 10 or above is recommended. Make sure that your card is labeled Micro SDHC and not Micro SDXC as SDXC cards will not work with this Dash Cam.

Fuzzy/dirty image?

Please check if the lens is filled with dirt or fingerprints and clean carefully. Please clean the lens with cloth before shooting. Make sure to peel off the transparent protective sticker on the front of the Dash Cam's lens.

The DASH CAM is jammed or not responding?

Go to Default Settings in the settings menu and reset your Dash Cam to the factory standard settings.

Micro SD card not recognised by DASH CAM?

Format card in the Dash Cam's menu setting's before use.

## Safety information & warnings

- Do not use the Dash Cam in damp working conditions; the Dash Cam is not waterproof.
- Do not try opening the shell or trying to repair the Dash Cam by yourself. If the accessories for the Dash Cam have any problems, please take it to an authorised repair agent for repair.
- Do not use a chemical substance, cleaning solvent or cleaner to clean the Dash Cam, please use a moist soft cloth if you would like to clean the Dash Cam.
- Do not use the Dash Cam under conditions where dust is present.
- Use a moist soft cloth to clean the lens before use, to avoid poor video footage.
- Gator is NOT responsible for the loss of any recorded video during operation. Although designed to withstand high impact of car collision, Gator does NOT guarantee recording of accidents where the impact may cause the device to be damaged.

## Infringement of copyright warning

Please note that this product is for personal use only, the method of use shall not violate the goods, or infringe on domestic or international copyright laws.

Recorded images are for personal use only, please note that in some cases to use this product to record performances, exhibitions or business activities may infringe the copyright or other legal rights and interests of others.

## Technical assistance

If you need assistance setting up or using your Gator product now or in the future, call Gator Support.

Australia

TEL: 03 – 8587 8898

FAX: 03 – 8587 8866

Mon-Fri 9am – 5pm AEST



Please retain this user guide for future reference.

If you would like to download a digital copy of this manual, or other Gator manuals, updates or software, please visit the <http://gatordriverassist.com> website and search for your model. Click on ‘Firmware & Manuals’ at the bottom of the screen to view and download.

This manual is considered correct at time of printing but is subject to change. For latest manuals and updates refer to the website.

Copyright © 2017 by TDJ Australia

All rights reserved. No part of this publication may be reproduced, distributed, or transmitted in any form or by any means, including photocopying, recording, copying or other electronic or mechanical methods, without the prior written permission of the author.