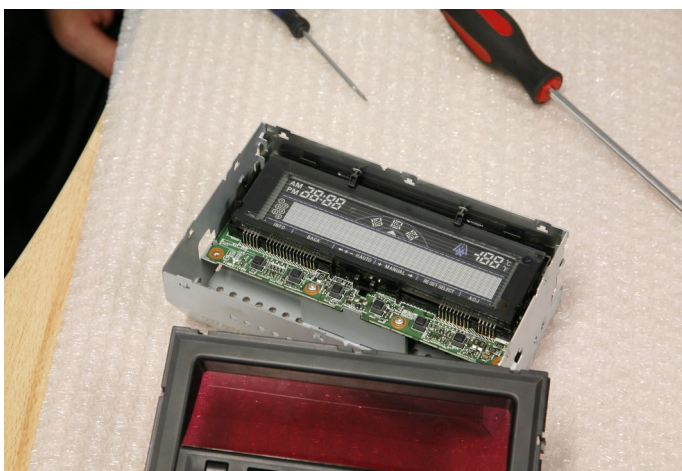


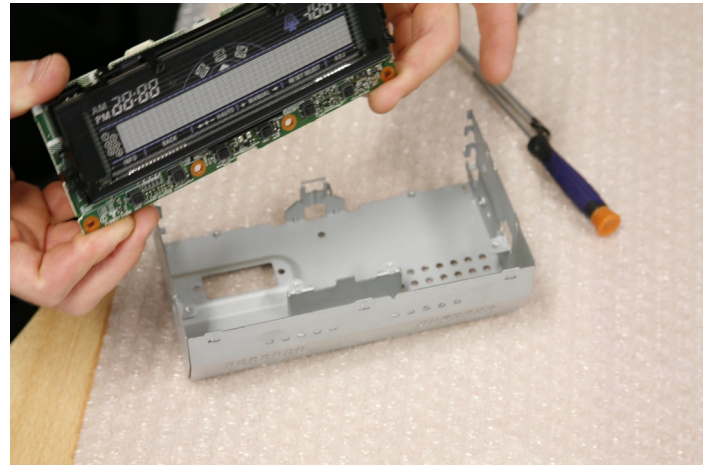
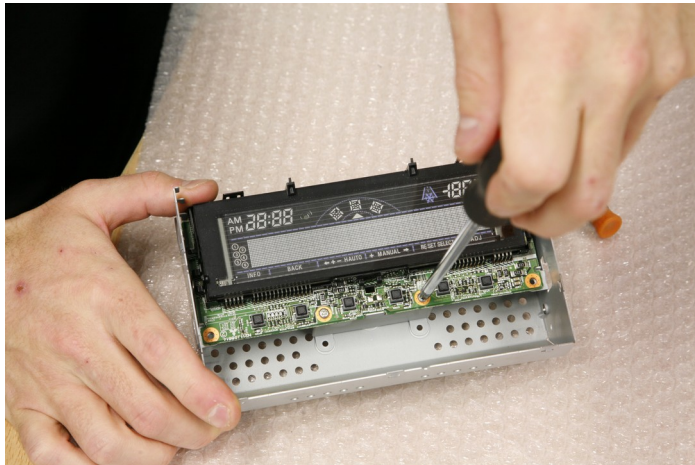
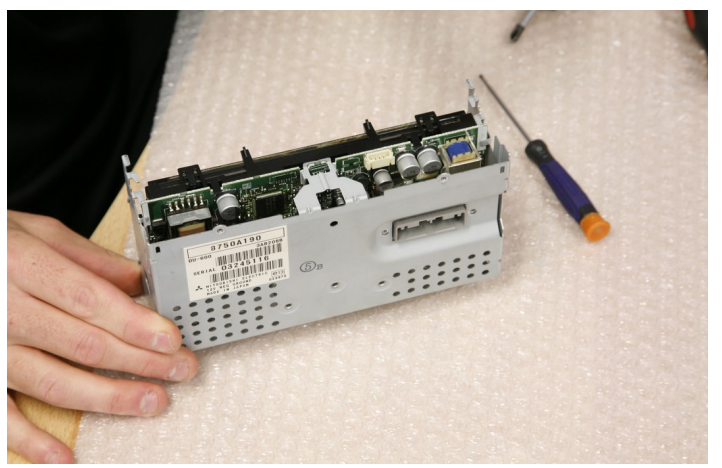
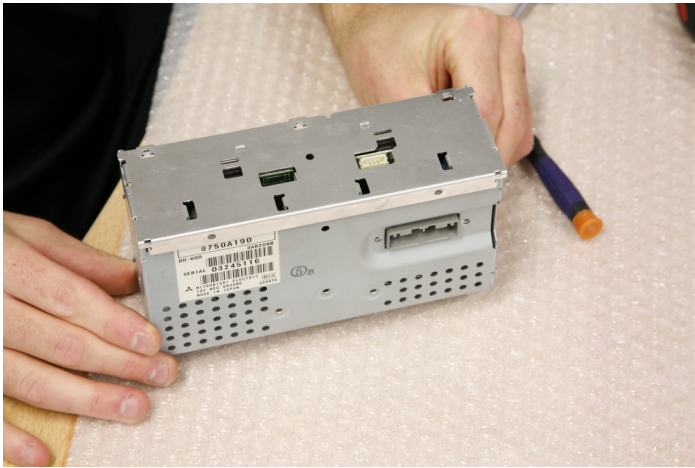
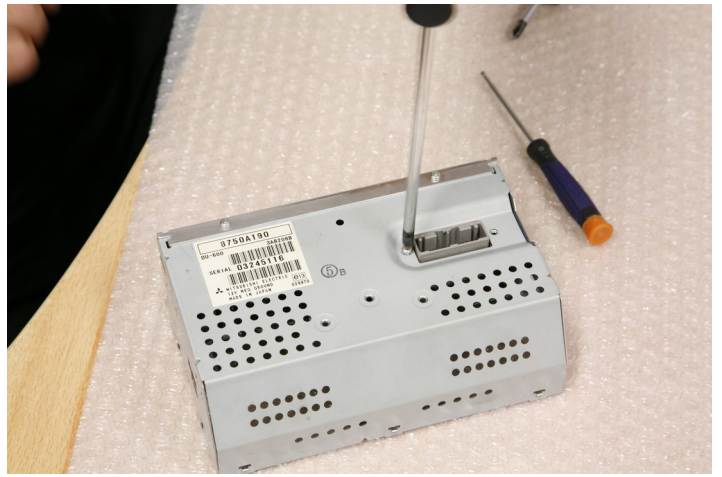
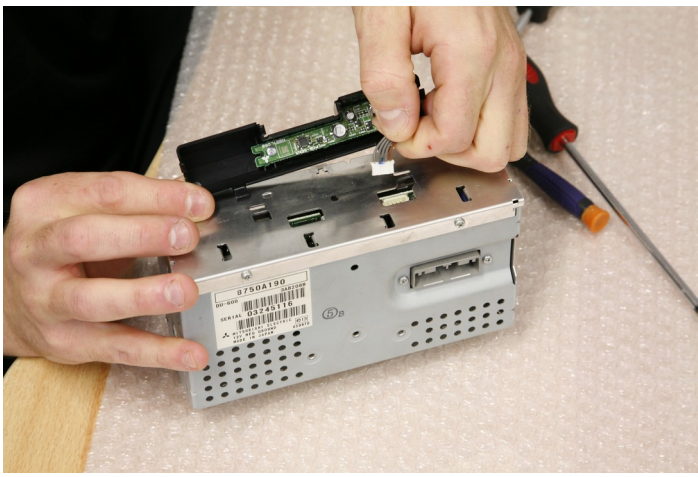
Mitsubishi Triton Relocation panel (FP8013K)

1. Remove the Factory display module from the vehicle



2. Begin by disassembling the display (as shown in the following photos)

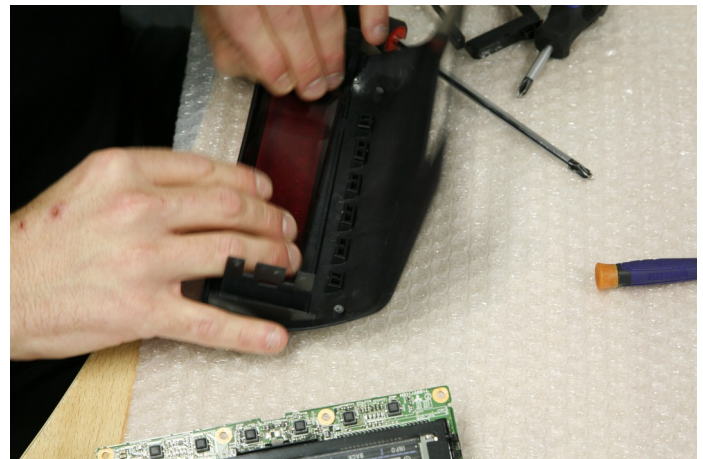
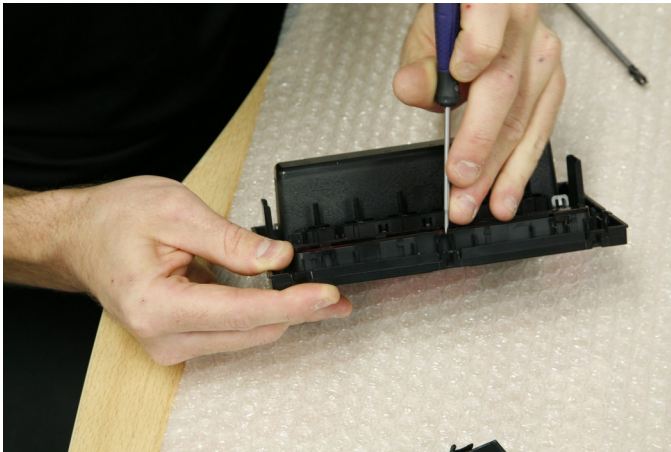




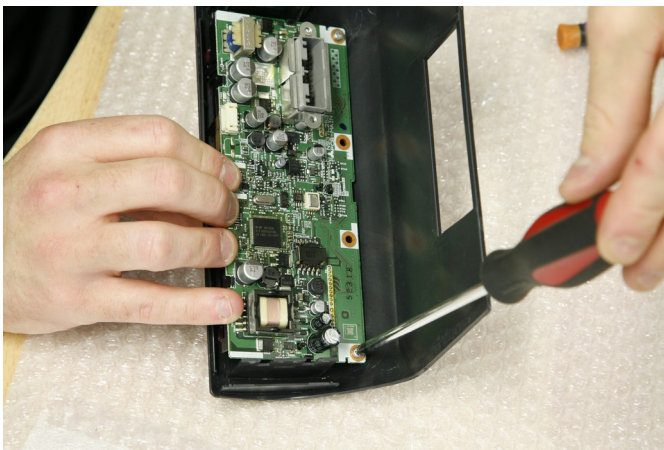
3. Insert the buttons into the new display if the buttons do not move freely we recommend filing out the openings on the display so the buttons move in and out without resistance. We also recommend adding a little foam to the buttons to reduce rattling.



4. Remove the Coloured Perspex from the Factory display and insert into the new relocation display
(The perspex display will need to be flipped from concave to convex)



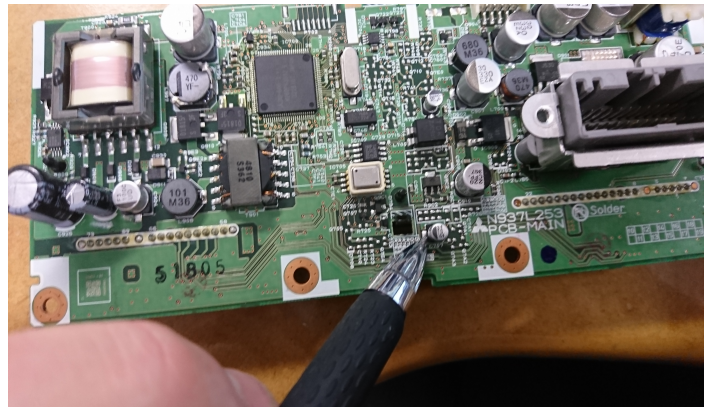
5. Screw the main board into the new display housing



6. Test the Button display to ensure that buttons move freely



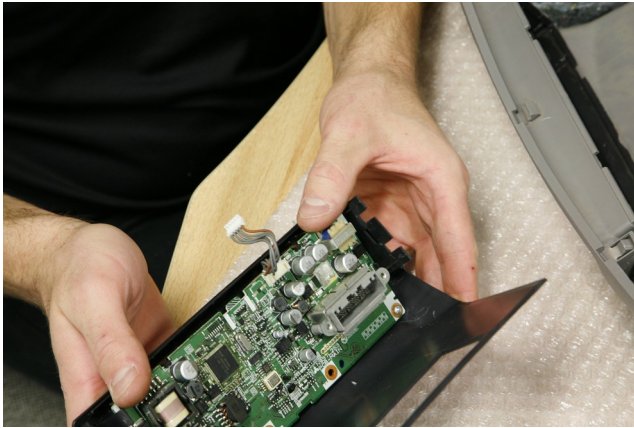
7. Remove the Lower panel out of the Triton as per manufacturers instructions, shave out the lower right corner to clear the capacitor and drill a hole (as shown) to clear other circuitry (if this is not done then it is possible to damage the main board on re assembly)



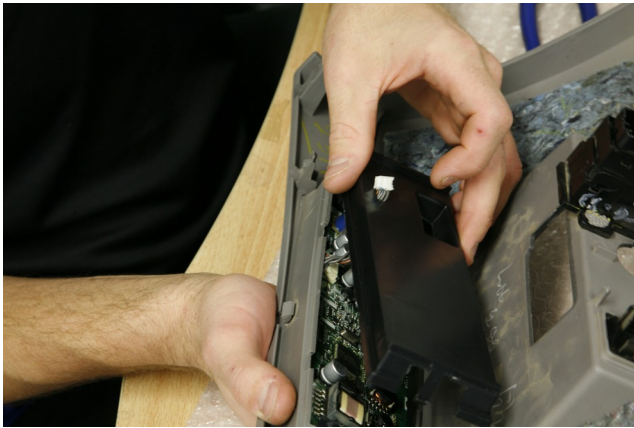
8. place the metal tangs onto the edges of the front panel



9. Insert the display into the lower mount of the Triton making sure that the Compass cable has been plugged in (for best results we recommend that this cable is extended so the compass can be attached to the top of the new stereo)



10. Thread the Compass cable through the backing plate and clip the backing plate into the fascia



11. Test unit in vehicle ensuring that all buttons work correctly

12. Calibrate the vehicles compass by accessing the settings menu on the display this is best done in a wide open space by putting the vehicle on hard lock both clockwise and anticlockwise until the display accepts the calibration.