

Aerpro

FLYING FOX

RC WIFI QUADCOPTER DRONE

4CH REMOTE CONTROL QUADCOPTER AP747WF

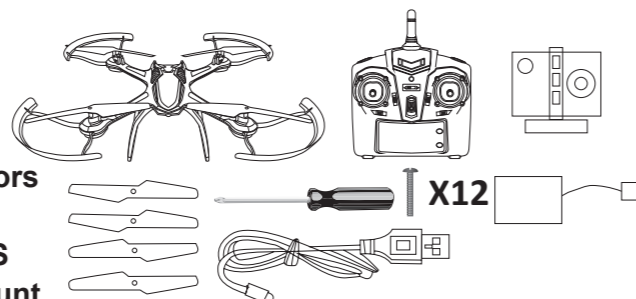
QuadCopter with 6-axis Gyroscope



Please read this manual carefully before operating this product and keep it for future reference.

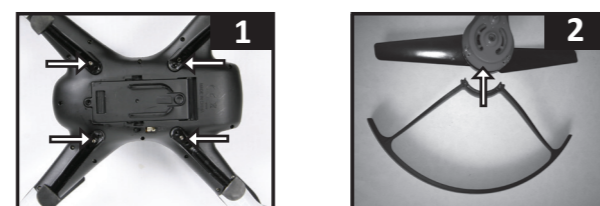
What's in the box

- Quadcopter
- Transmitter
- Main blades
- Blade protectors
- Screwdriver
- Screws 12PCS
- Camera & mount
- Rechargeable battery



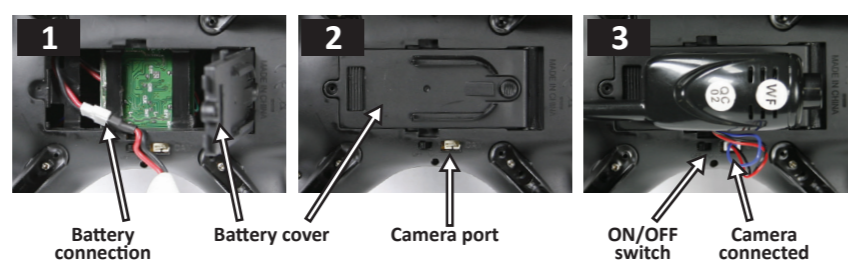
Installing landing skids & blade protection frames

1. Install the landing skids to the bottom of the quadcopter (Figure 1)
2. Install the blade protecting frame to every corner, then secure using the supplied screws (Figure 2)



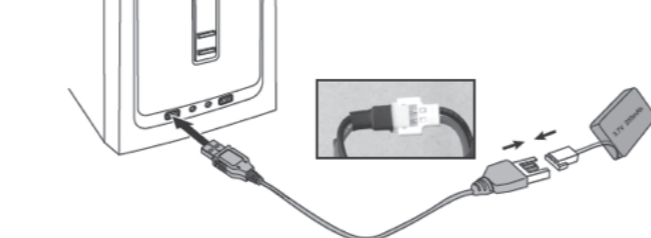
Installing the battery & camera

1. Open battery cover on the drone and attach battery (Figure 1) then close cover and secure with screw
2. Attach camera by sliding into groove on battery cover (Figure 2) and connect 3-pin plug into camera port on the side (Figure 3)



Battery installation and charging the Drone

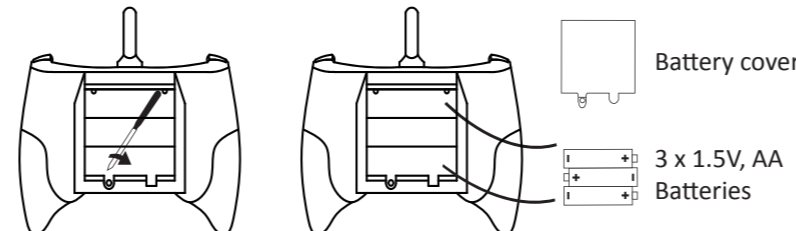
Remove the battery from the drone. Once the battery is fully disconnected, insert the connector of the battery into the USB charge cable and insert into a PC/Mac, laptop, or USB mains adapter. The red LED on the USB will appear whilst charging and will turn off once it is fully charged and ready to use.



NOTE: Fully recharge the battery after use / before storing drone.

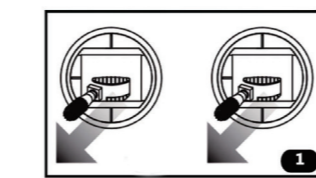
Controller

To install batteries into the controller: Carefully remove the screw from the battery cover, remove the cover and insert 3 x 1.5 V, AA batteries, according to indicated polarity. **NOTE: Batteries are not included. Please refrain from mixing old and new batteries as well as different brands.**

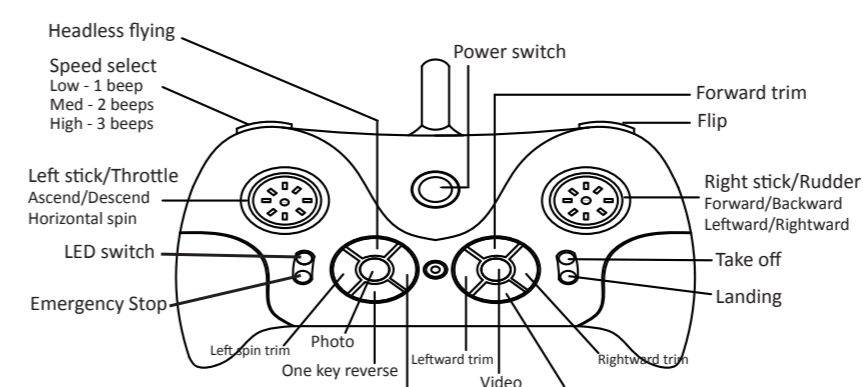


Gyroscope Calibration

Pushing both the left stick and right stick to the left (45 degree angle) at the same time, the calibration is successful once the lights stop flashing. (when the aircraft drifts any direction, and the trim-turning adjustment can not play the role, this operation can repair it).

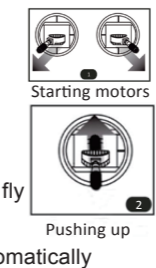


Instruction for Controller with Altitude Hold



Taking off using hover

1. Power on the drone and place it on a flat surface
2. Turn on the remote control
3. Push the left stick up to top position then pull it down, a beep sounds and the LED stops flashing, the drone has been unlocked
4. Push the left stick to left (45 degree angle) and right stick to right (45 degree angle) at the same time, motors start rotating, ready to fly
5. Push up the left stick, the drone takes off and ascends manually
6. Or press the button 'Take off', the drone takes off and ascends automatically
7. Release the throttle, the left stick backs to central position, and drone hovers automatically



Landing the drone

Method 1: Pull down the left stick to bottom position, the drone descends and lands manually
Method 2: Press the button 'Landing', the drone descends, lands and stop motors automatically.
NOTE: Before final landing to ground, the drone can still be flown up by pushing up the throttle.



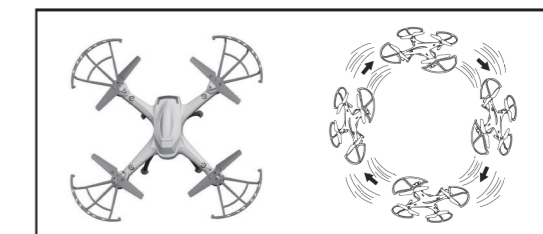
Emergency stop

Press the button 'Emergency stop' to stop the motors immediately to avoid further damage or injury.
Note: If it's not necessary, please do not try this Emergency button to bring possible damage to the drone by violent crashes.

Basic flying and Trim tuning

Ascend	Push the left stick up, the drone ascends	
Descend	Pull the left stick down, the drone descends	
Left spin	Push the left stick to left, the drone spins counter-clockwise	
Right spin	Push the left stick to right, the drone spins clockwise	
Forward	Push the right stick up, the drone flies forward	
Backward	Pull the right stick down, the drone flies backward	
Leftward fly	Push the right stick to left, the drone flies leftward	
Rightward fly	Pull the right stick to right, the drone flies rightward	
Left/Right spin trimming	When the drone drifts counter-clockwise, press right spin trim button to tune it. When the drone drifts clockwise, press left spin trim button to tune it.	
Leftward/Rightward trimming	When the drone drifts rightward, press the leftward trim button to tune it. When the drone drifts leftward, press the rightward trim button to tune it.	
Forward/Backward trimming	When the drone drifts backward, press the forward trim button to tune it. When the drone drifts forward, press the backward trim button to tune it.	

Flips and rolls



After you have the basics of flying, you're ready to learn flip and roll your drone. To perform a flip or roll, press the Flip button, make sure the drone is at least 3 metres off the ground and quickly push the Rudder, in either direction to make the drone flip or roll. Once the manoeuvre is completed, steady the drone.

NOTE: For the version with altitude hold function, the drone is limited to flip forward or backward only, while roll is not working.

Headless flying

Headless mode supports beginners in the initial stages of learning how to fly the drone. Regardless of where the drone turns, the direction of flight always corresponds exactly to the direction specified with the control for forwards/backwards and sideways movements.

1. Place the drone on the level surface facing away from you. Turn on the drone and connect the controller.
2. Press the Headless mode button, and you will hear a beep and LED light flashes to indicate that the drone is in Headless mode. You can press the Headless mode button again to deactivate.
3. For one key backwards mode, press the One key reverse button, and you will activate it and the drone will now attempt to fly back to its initial starting point. If you want to deactivate this mode, then push the Right control lever in any direction.

Note: The drone will not land itself, you still need to control the height of the drone when using the one key backwards flying mode.

NOTE: Please operate the drone in a spacious indoor or outdoor environment. Do not operate the drone in rain, snow or strong winds. Keep away from people, animals and other obstacles.

App download and Installation

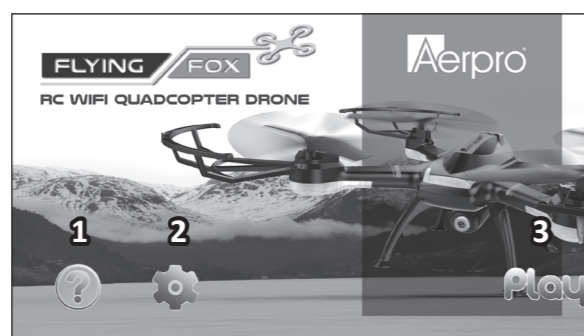
NOTE: In order to use the WiFi camera, you must download and install the App.

Install App: For Android and Apple iOS devices, please go to the Google Play or App Store to download the app: **AP747WF**

- Turn on the power switch of your drone and the LED indicator lights will flash
- On your iOS or Android device, go to the WiFi settings and search for a new network
- After a few seconds, you will see a network listed "AP747WF". Tap to connect
- Once connected to the drone, launch the drone App.

Interface and camera controls via smartphone App

Home Screen



1. Instructions 2. Settings 3. Controls

Control Screen



- | | |
|--------------------------------|------------------------|
| 1. Home screen return | 11. Reverse the screen |
| 2. Take a photo | 12. VR mode |
| 3. Record video | 13. Headless mode |
| 4. Photo & video playback | 14. Calibrate gyro |
| 5. Speed: Slow/Medium/Fast | 15. Track mode |
| 6. Gravity sensor mode | |
| 7. Altitude hold | |
| 8. 360° flip | |
| 9. Show/Hide control interface | |
| 10. Show/Hide mode settings | |

Flying the drone via smartphone App



NOTE: Full instructions on flying your drone using your smartphone included in the instructions part of the drone App on the Home screen.

Flying in VR mode

- Press the VR button on the App interface. The screen will split to fit the VR headset
- Place your smartphone into the VR headset
- Use the remote controller to fly the drone

Technical assistance

If you need assistance setting up or using your Aerpro product now or in the future, call or email Aerpro Support (Australia and International inquiries).

NOTE: Maintaining control of the drone while flying is the sole responsibility of the pilot. Any loss or damage caused while flying is NOT covered by warranty.

Email: service@tdj.com.au
TEL: +61 3 8587 8898
FAX: +61 3 8587 8866
Mon-Fri 9am - 5pm AEST

Please retain this user guide for future reference.



To avoid quadcopter damage and injury, please read the user manual carefully before flying.



Laws & Regulations on flying your drone (AUS)



You need to be able to see the aircraft, with your own eyes (eg, without binoculars) at all times.
Don't let it get too far away from you!



You need to fly the aircraft so it isn't a hazard to other aircraft, property, and people.
That means not flying it over areas where there are people.



Fly the aircraft in daylight only.



Give way to all other aircraft.
You don't want your aircraft destroyed in a collision with a bigger aircraft, or be responsible for damaging it, or for putting people's lives at risk.



You cannot fly your aircraft higher than 120 metres (400 feet) above ground level.



You cannot fly closer than 5.5 kilometres from an aerodrome.
You cannot fly in controlled airspace without a clearance from Air Traffic Control. For more information, see the CASA web site.



It's illegal to fly for money or economic reward unless you have correct certification from (CASA).

For Further Information:
Model Aeronautical Association of Australia www.maaa.asn.au
or
CASA casa.gov.au/rpa casa.gov.au/sportaviation
Phone 131 757

Laws & Regulations on flying your drone (NZ)



You need to be able to see the aircraft, with your own eyes (eg, without binoculars) at all times.
Don't let it get too far away from you!



You need to fly the aircraft so it isn't a hazard to other aircraft, property, and people.
That means not flying it over areas where there are people.



Fly the aircraft in daylight only.



Give way to all other aircraft.
You don't want your aircraft destroyed in a collision with a bigger aircraft, or be responsible for damaging it, or for putting people's lives at risk.



You cannot fly your aircraft higher than 120 metres (400 feet) above ground level.



You cannot fly closer than four kilometres from any aerodrome.
You cannot fly in controlled airspace without a clearance from Air Traffic Control. For more information, see the CAA web site.

You can fly outside some of these conditions, but there are more rules to keep you and your aircraft safe, so contact Model Flying New Zealand or the Civil Aviation Authority.

www.nzmaa.org.nz

www.caa.govt.nz/rpas