

**clarion®**

**Map Update Instructions**

**SD506AU**

---

**ADVANCED NAVIGATION**



<https://clarion.naviextras.com/>

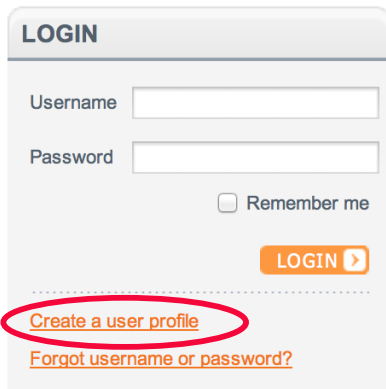
Thank you for choosing Clarion.

**Please take extra care when following these map update instructions.  
Data corruption is not covered by warranty.**

<b>1: How to create a Naviextras user account .....</b>	<b>P. 3</b>
<b>2: How to install Naviextras Toolbox .....</b>	<b>P. 5</b>
<b>3: How to start using Naviextras Toolbox (connecting SD card and log-in) .....</b>	<b>P. 6</b>
<b>4: How to browse and select updates in Naviextras Toolbox .....</b>	<b>P. 9</b>
<b>5: How to buy updates and extras in Naviextras Toolbox .....</b>	<b>P.11</b>
<b>6: How to download and install updates .....</b>	<b>P.13</b>
<b>7: How to make a backup or restore the navigation software .....</b>	<b>P.17</b>
<b>8: How to transfer contents between the PC and the SD card .....</b>	<b>P.19</b>

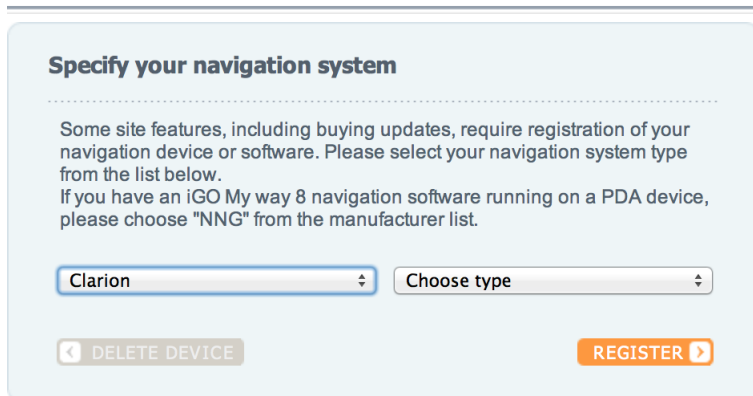
# 1: How to create a Naviextras user account.

Please visit **clarion.naviextras.com** and click on “Create a user profile”.



From the drop-down list, select “Clarion” and “ŽYUWJÁT UÖÖŠä”

## DEVICE REGISTRATION



Once you have successfully specified your navigation device type, please click “Register” to begin the process of creating your user account.

You have successfully specified your navigation device type



**REGISTER** >

Please fill in all details in the required fields. Be sure to keep your username and password in a secure location for future reference.

## REGISTRATION

### Login information

Username \*

E-mail \*

Password \*

Confirm password \*

Title

First name \*

Last name \*


Country \*

State / Province / Region \*


Preferred site language \*

Subscribe to newsletter

---

 [Try a different image](#)


Enter the verification code \*

 [By proceeding, you accept the Site Usage & Privacy Terms.](#)

\* REQUIRED FIELD

CREATE MY ACCOUNT ▶

Once all details are entered correctly, click on “create my account”. You will then receive a message that you have successfully created a new user account.


 **You have successfully created your new user account.**

Some features of this site is only available after verification of your e-mail address. Please check your e-mail inbox, and click on the first link in the verification e-mail to finish the registration process.

This step is required in order to prevent others using your e-mail address for registration.

An email will automatically be sent to the email address you entered. To complete the user account registration, you are required to click on the confirmation link provided in the email.

## USER ACCOUNT ACTIVATED

 **E-mail address successfully verified, user account activated.**

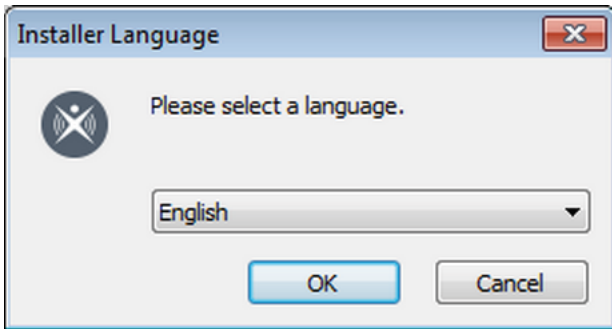


## **2: How to install Naviextras Toolbox**

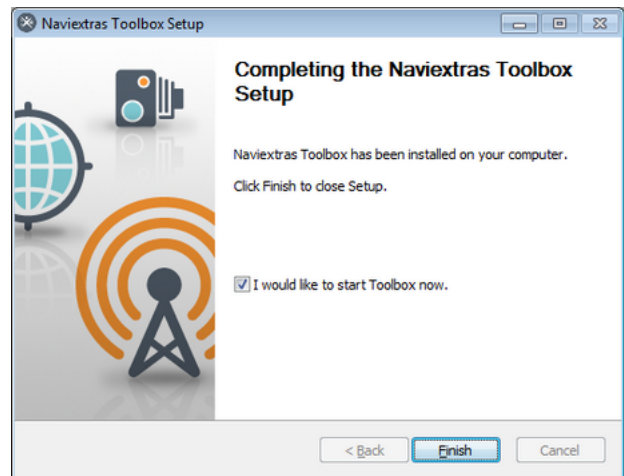
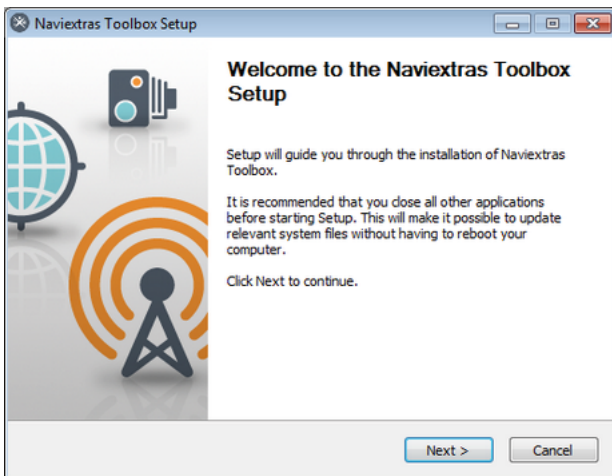
Before downloading the installer from the Downloads page, please make sure that your PC meets minimum technical requirements (operating system, enough free space on your local hard disk).

Installation of Naviextras Toolbox is quick and easy. After downloading the installer file, simply double-click the file to start the installation.

First you need to select the language of the Installation Wizard.



During the installation process follow the instructions on the screen and click Next:



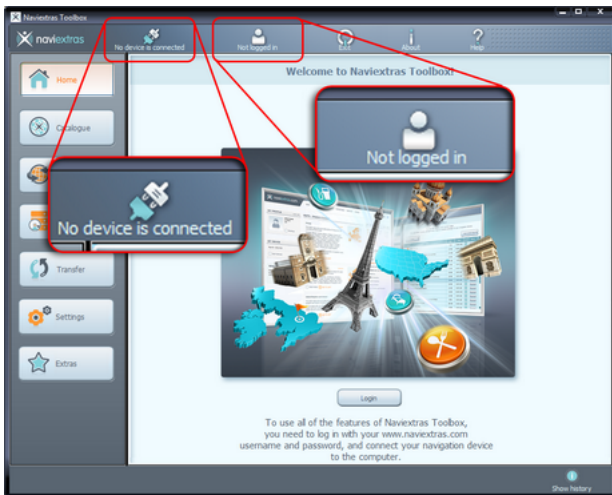
If you checked the "I would like to start Naviextras Toolbox now." option, Naviextras Toolbox will start automatically after installation.

Toolbox has an AutoUpdate feature, which prompts you to upgrade it at every startup if there is a newer version available. If you choose to upgrade, you will go through the same installation procedure again as described above. You must have administrator privileges on your computer to be able to update the software. If you are notified about an update without the possibility of performing it, please contact your network administrator.

### **3: How to start using Naviextras Toolbox (connecting SD and log-in)?**

This Guide explains the very first steps of using Toolbox: how to connect your navigation MicroSD to your PC and how to log in with your username and password.

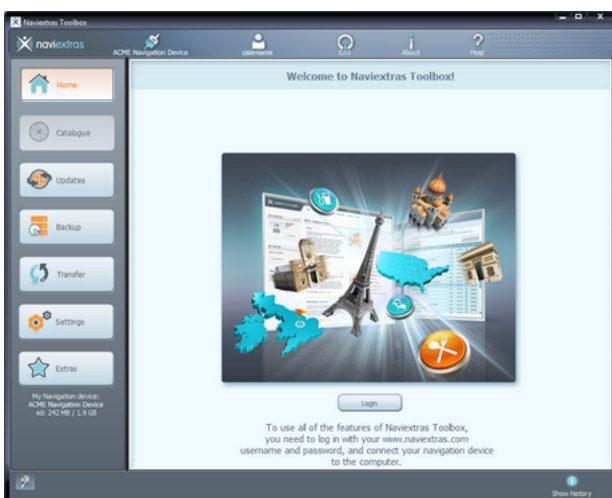
After Naviextras Toolbox has been started, you will see the main page. The toolbar on the top of the page informs you that no device is connected:



Initial steps are:

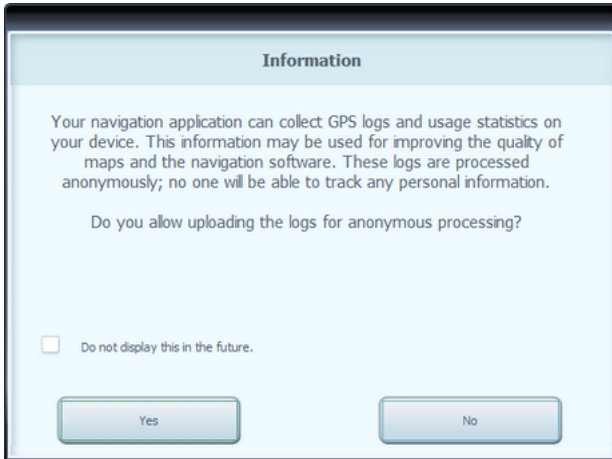
1. Connect your navigation MicroSD to your PC (using included adaptor).
2. Make sure your PC is connected to the internet.
3. Click the 'Not logged in' icon or the Login button to log in with your username and password.

1. Connect your navigation MicroSD to your PC using the supplied MicroSD to SD adaptor or alternatively if your PC does not have a SD slot, you may need to purchase a USB card reader.



When your device is successfully connected and Naviextras Toolbox finds it in the list of supported devices, the device (or software) name will appear at the top of the Toolbox window.

Some navigation devices are capable of collecting strictly anonymous usage statistics and GPS logs. These logs can be used by the developers to improve the quality of maps and the navigation software. If your device can collect such information, Naviextras Toolbox will ask you to allow the upload of that information for anonymous processing. Click the "Do not display this in the future" checkbox if you do not want to be asked again. (You can change your decision any time later in Settings.)



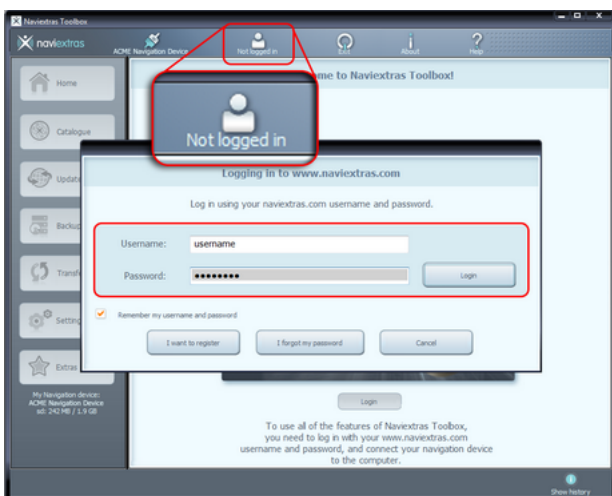
2. Make sure your PC is connected to the Internet.

Internet connection is required for Naviextras Toolbox to verify if any update is available for download, and of course later to download it.

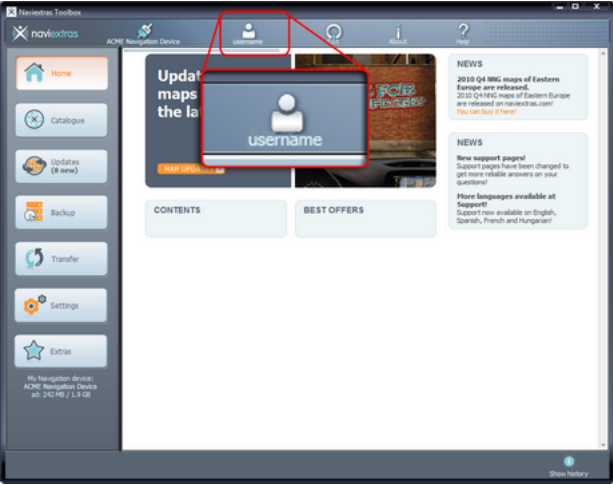
3. Click the 'Not logged in' icon or the Login button to log in with your username and password

Naviextras Toolbox and the Naviextras.com site work in an integrated way. When you buy an update or any extra map on the Naviextras.com web site, and then you log in to Naviextras Toolbox, it will immediately know that you have the right to download and license it. Also, if you are entitled to have a free update, this will be shown in Naviextras Toolbox after you log in.

To log in, click the 'Not logged in' icon in the toolbar at the top of the page or click the Login button in the Naviextras Toolbox main screen.

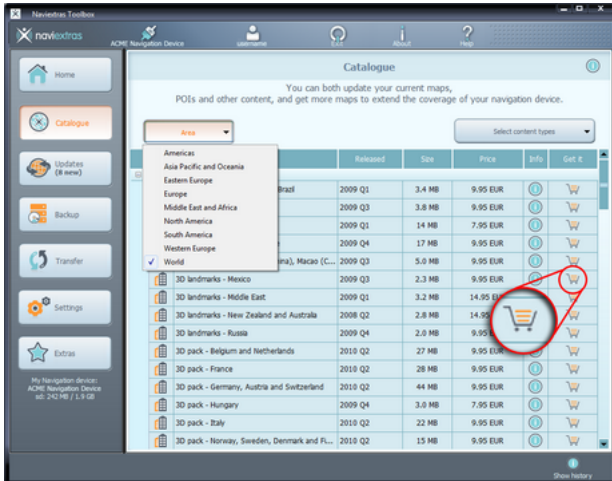


When you have successfully logged in, your username will be shown on the top of all Naviextras Toolbox screens.

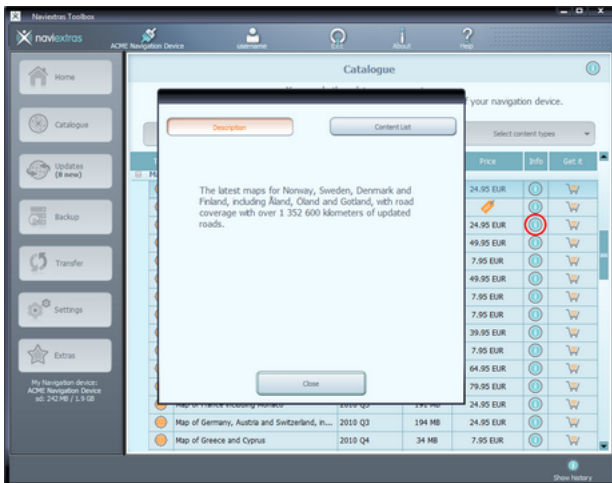


## 4: How to browse and select updates in Naviextras Toolbox

If you already purchased update(s) on the Naviextras.com portal, you can skip these steps and continue with reading the **How to download and install updates** guide. After successfully connecting your device and logging in, you can start browsing updates and extra maps in Naviextras Toolbox. Click on the Catalogue button in the menu bar on the left hand side.

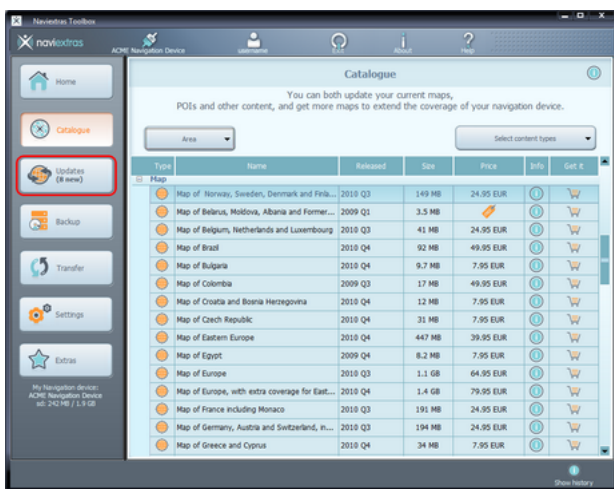


Available updates and extras can be filtered by geographic region or content type (map, 3D landmark, 3D package, etc.) with the two roll-down menus above the list of available updates. If a content is available for you after payment, the price and a shopping cart icon is shown for that item. If an update is available for you free of charge, an icon of a 'free' price tag is shown instead of the price. You can find out more details about the updates by clicking on the blue (i) icon.



After you have purchased an update or added a free item to your cart, it is added to the installation queue, and the number of updates awaiting installation is shown on the Updates button.

After you have purchased an update or added a free item to your cart, it is added to the installation queue, and the number of updates awaiting installation is shown on the Updates button.



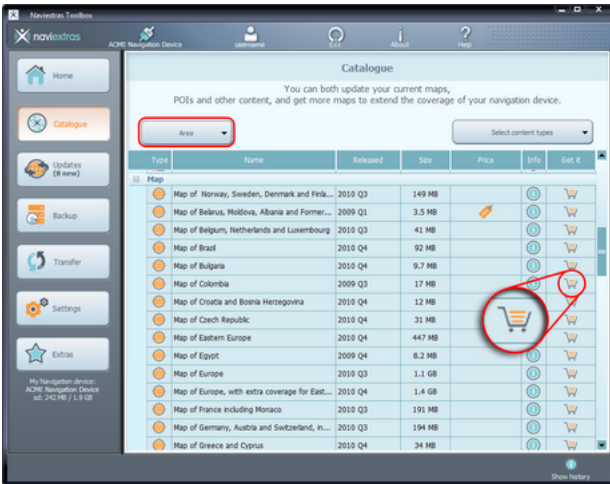
Click the “Updates” button to continue with the download and installation of updates.

## 5: How to buy updates and extras in Naviextras Toolbox

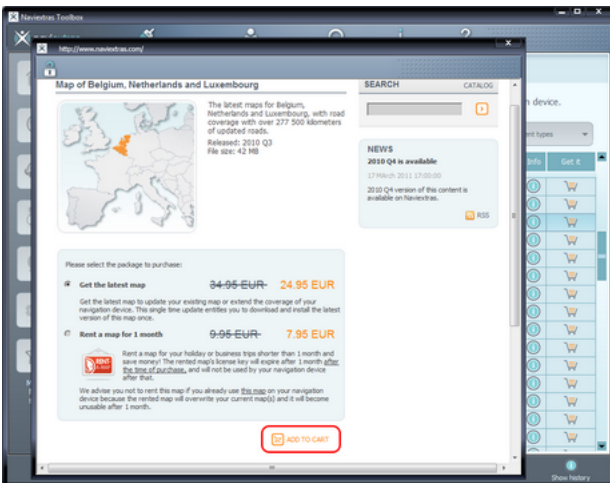
Instead of buying updates and extras on the Naviextras.com site, you can decide to buy them conveniently in Toolbox. This Guide explains the simple Toolbox purchase and checkout procedure.

Buying updates and extras is very similar to buying on the Naviextras.com site, so this Guide will mainly explain the few differences.

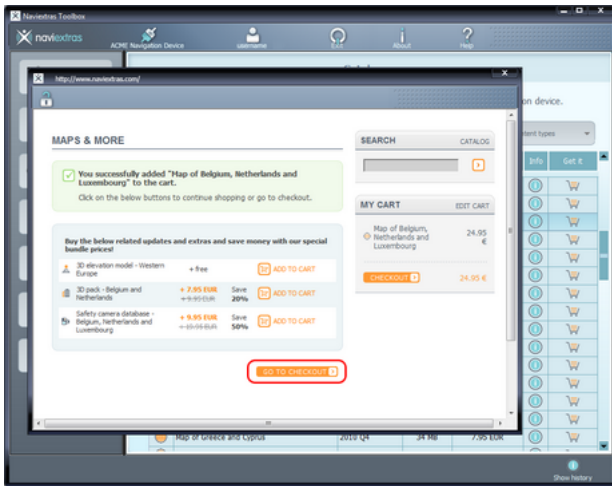
You can start buying by clicking on the shopping cart icon next to the selected item.



It will open a new Naviextras Toolbox window with a web-site like page with the detailed description of that item. You can add it to the cart by clicking on the Add to cart icon, just the same way as on the portal.

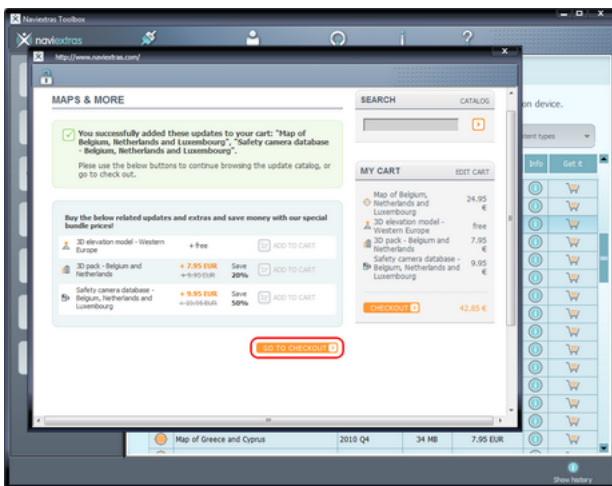


After adding the item to the cart, you will see your cart with a button to start the checkout process. Sometimes there are additional recommended items that you can get for a special bundle price if you buy them together with the content that is already in your cart. Click Add to Cart next to any of these items if you choose to take advantage of the special offer.



If you would like to buy additional updates too, simply close this window and click the shopping cart icon for another item, then click the **Add to cart** button to add the next item to your cart.

When all items are in the cart, click on the Go to Checkout button and go through the same checkout process as on the Navixtras.com site.





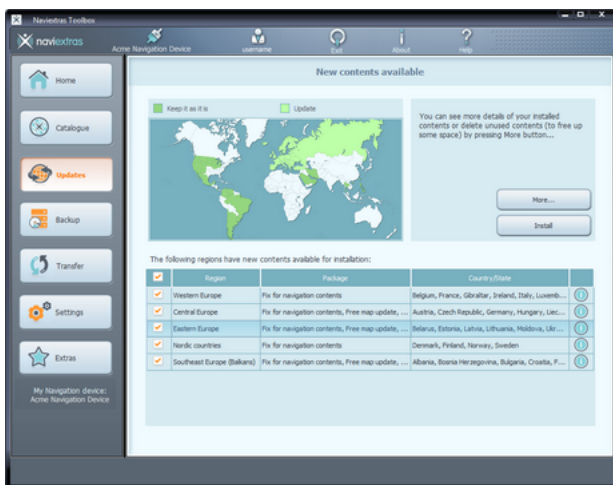
## 6: How to download and install updates

If you added free updates and/or added purchased updates to the installation queue, please click on the Updates button in the menu bar on the left hand side. This is the last step to update your navigation device or software.

The Updates button will open a screen which shows all available updates, including:

- items that you have purchased but not yet installed (updates or extras),
- free updates and extras that you added to the installation queue from the Catalogue,
- and special free updates (which are normally pay updates but your manufacturer or the Site operator provides them to you free of charge).

The list shows all available updates by region in a list and on a world map.



### Simple installation

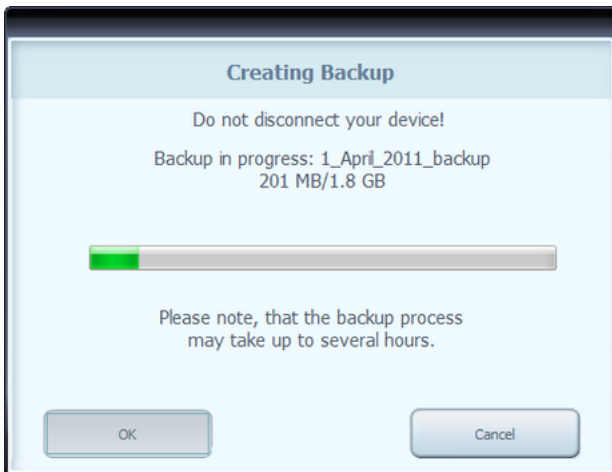
By default, all items belonging to all regions are selected for installation. If you decide to skip a region for now, uncheck the checkbox at the beginning of its table row.

After reviewing the table, click Install at the bottom of the screen to start the installation process.

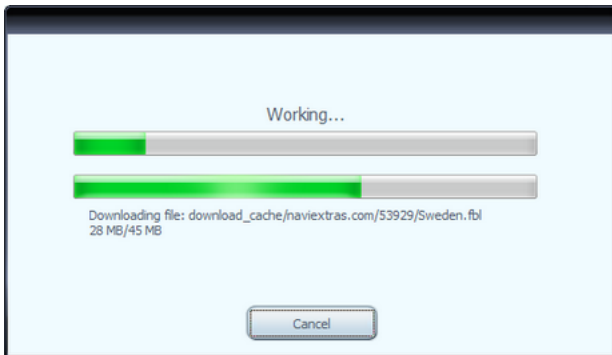
After clicking on the Install button, you will be prompted to make a backup. We strongly recommend to proceed with a backup before downloading and installing updates. You may decide to skip backup at your own risk.



Depending on your PC's USB port and device capabilities (support for USB 1.1 or USB 2.0) the time needed to make a backup may vary. Please wait until the backup process is completed.



After creating a backup, Toolbox will start downloading and installing the selected updates. A double status bar shows you the progress: the one on top shows the total ratio of the job already done, and the one at the bottom shows progress with the current file. Please wait until you receive a message that the operation is completed.



## Advanced options

You have several options to review the available updates in detail:

- You can check the exact list of available contents belonging to a region by clicking the (i) icon in a table row. This merely provides information, you cannot modify the selection here.



- You can click More... to enter the Device content manager. Here you can review the selected updates together with the content that you already

have on your device. Clicking on a region on the map will have the same effect as clicking a button in the Action column of the table:

- In case of a region for which updates are available, you can choose whether you want to Upgrade the region, Keep the current content or Remove all content belonging to that region entirely.
- In case of regions without updates, you can Keep it as it is or Remove all content belonging to that region entirely.

If you choose to remove a content, you will be prompted whether you want to remove it permanently or store a copy of the removed content on your PC (you can change this behaviour in Settings).

Click Apply changes... to start installing the selected updates and performing all selected actions. The installation process is then the same as in the case of simple installation.



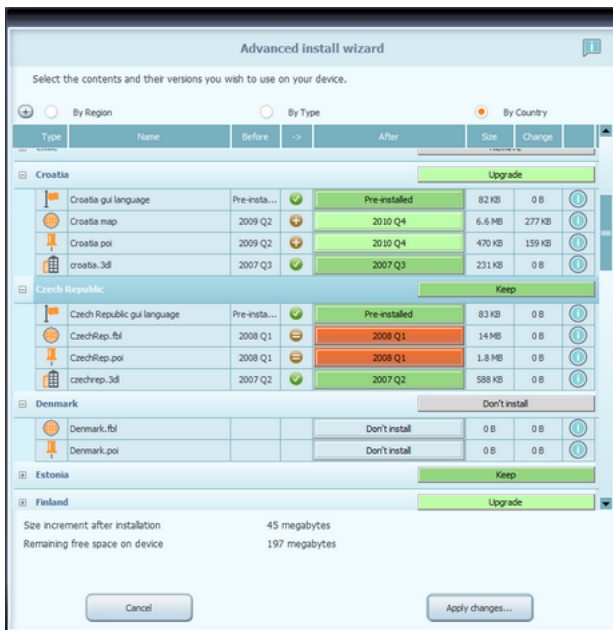
- You can click Advanced in the Device content manager to enter the Advanced install wizard.

Here you can review all the selected updates together with the content that you already have on your device item by item.

- You can sort content items by region, country or content type (such as maps, 3D landmarks, places of interest, and so on). Click any of the radio buttons at the top of the table to change the sorting criteria.
- You can upgrade, keep or remove content items just like in the Basic install wizard. However, here you can make a choice individually for each content item, not just by region. Click the buttons in the Action column (or in the title row for a group of content items) to modify the action related to a content item. If you choose to remove a content, you will be prompted whether you want to remove it permanently or store a copy of the removed content on your PC (you can change this behaviour in Settings).
- You can check the size of each content item, and in case of updates, you can see the change in size compared to the currently installed version of that content. At the bottom of the table, you can review the total change in the space occupied by all content after making the changes that you selected in the table as well as the remaining free space on the device after completing all actions.

Click Apply changes... to start installing the selected updates and performing all

selected actions. The installation process is then the same as in the case of simple installation.



## **7: How to make or restore a backup of the navigation SD card.**

It is suggested to make a backup in at least the following cases:

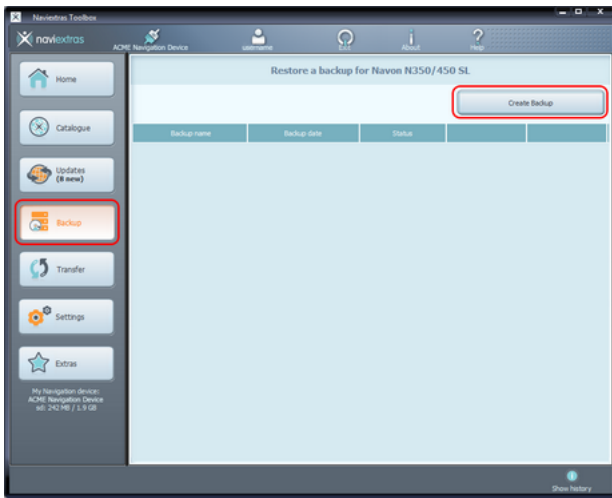
- right after you acquire a device or navigation software;
- before using Naviextras Toolbox to update your navigation software and its content;
- after updating your device or software.

By default, Naviextras Toolbox reminds you to make a backup in each of these events.

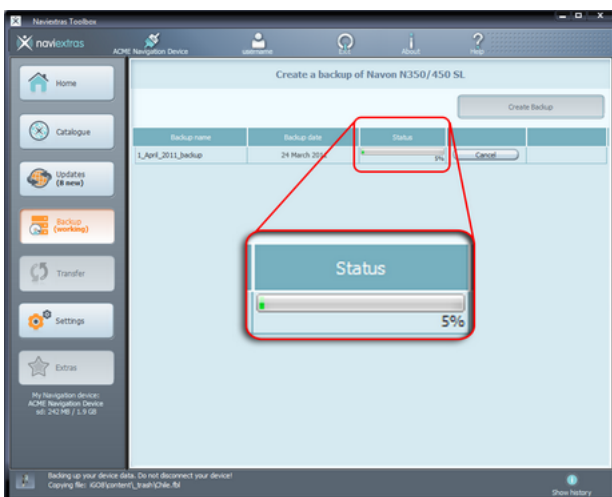
### Creating a backup

After connecting your device and logging in, click the Backup button on the left panel to access the backup and restore functions.

You can see the list of existing backups, which is empty at the beginning. Click Create Backup to start making a backup.



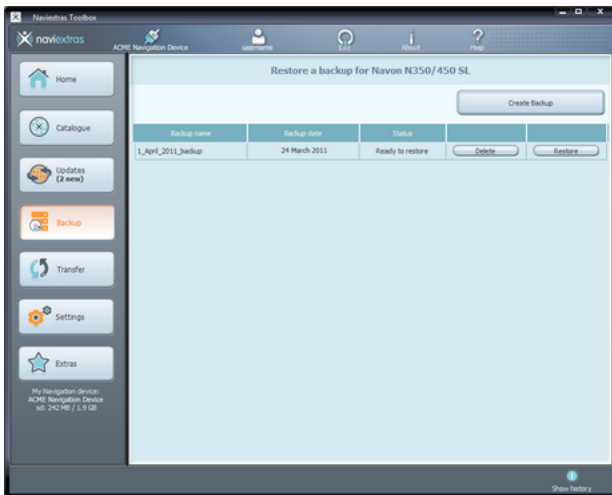
Depending on your PC's USB port and device capabilities (support for USB 1.1 or USB 2.0) the time needed to make a backup may vary. Please wait until the backup process is completed. Do not disconnect or switch off your device during the process.



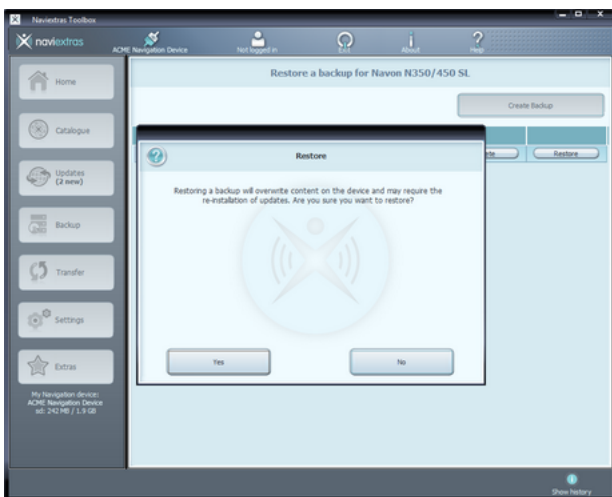
A status bar with the completeness percentage is shown while creating a backup is in progress. The status bar changes to 'Completed' when the process is finished.

### Restoring a backup

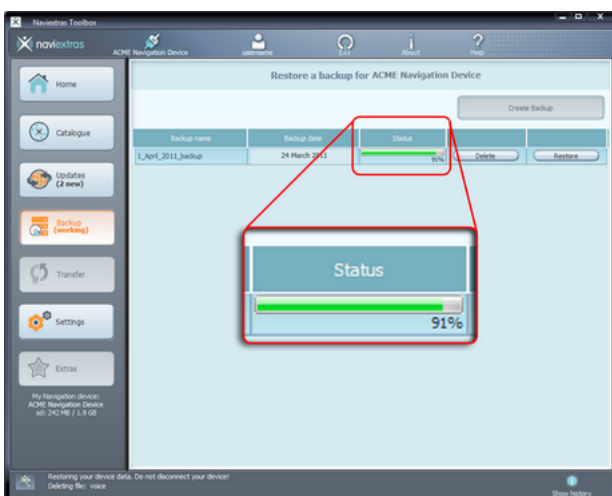
If you need to restore a backup, click the Restore button in the line that shows the name of the backup.



A warning is displayed that if you choose to continue with restoring a backup, all changes and updates will be lost that have been made after the backup date. Accept the warning **only** if you are sure that no harm will be done to your important data.



The time needed to restore a backup is similar to the time needed to create a backup. Please wait until the process is completed. Do not disconnect or switch off your device during the process.



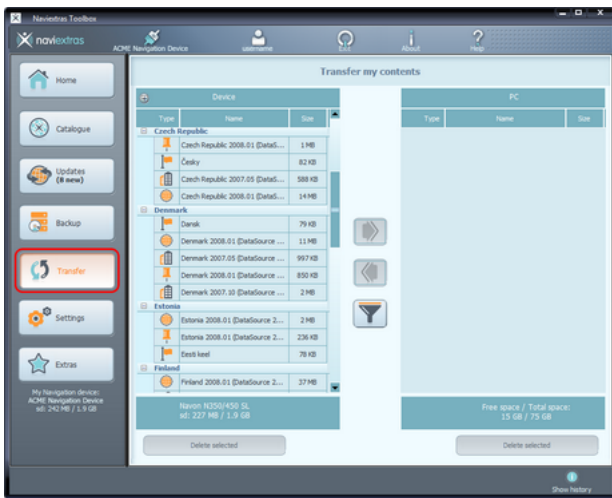
A status bar with the completeness percentage is shown while restoring a backup is in progress. The status bar changes to 'Completed' when the process is finished. Naviextras Toolbox then re-reads your device contents. You can continue using Naviextras Toolbox or exit and disconnect your device after this point.

## **8: How to transfer contents between the PC and the navigation MicroSD.**

This guide explains how to transfer your contents between your navigation MicroSD card with navigation software and your PC if you need to free up some space.

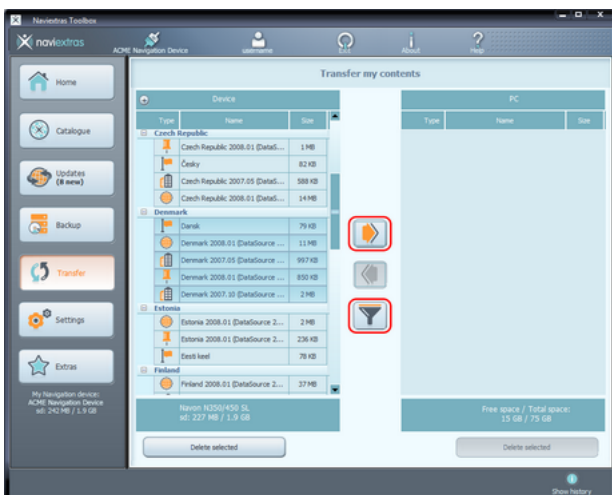
In some cases you might need to free up some space on your device or SD card to make room for new navigation content or media files. Toolbox allows you to transfer your contents between your device (or SD card) and your PC so that you do not lose the content that you decide to remove from the device permanently.

To start transferring your contents, click the Transfer button on the left panel. One table lists the contents stored on your device or SD card, and another contains those stored on your PC. By default, the 'PC' table is empty.

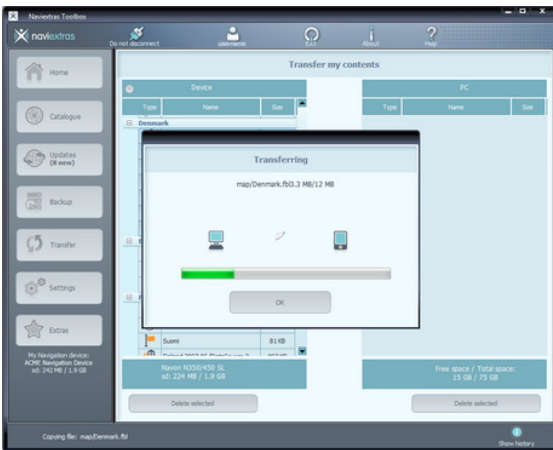


Contents stored on the device or SD card are grouped by country. The type of the content is represented by an icon next to its name. If you move the mouse pointer above an icon, a tooltip shows its meaning. There is also a Filter button between the two tables (with the drawing of a funnel) that allows you to filter the list of contents and change their grouping. You can mark a content for transfer by clicking on its name. You can select several contents in the same way as in Windows—by Ctrl+click and Shift+click.

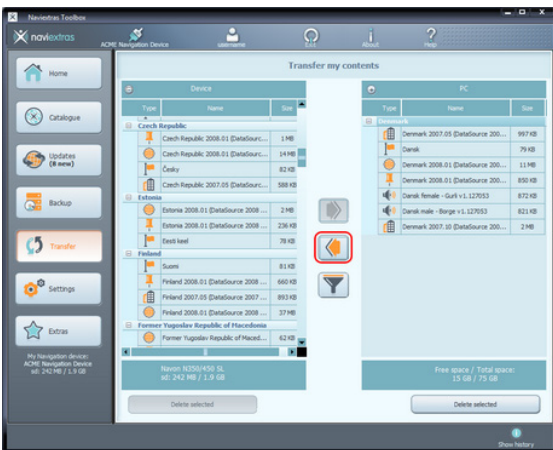
Having made a selection, start transferring your contents by clicking the arrow button that points towards the 'PC' table.



During the transfer, a status window shows the progress. Do not switch off or disconnect your device during the process.



When the transfer is finished, you can see the newly transferred contents in the table on the right side. You can transfer your contents back to your device or SD card any time by clicking the arrow button that points to the 'Device' table.



You can also transfer places of interest to your device from an external source. If you want to import places stored in .kml format (for example, from Google Earth), click Extras then Import external contents. Select the .kml file in the browser window that pops up.

