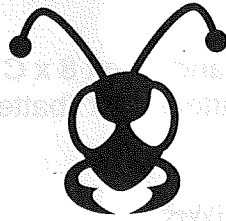
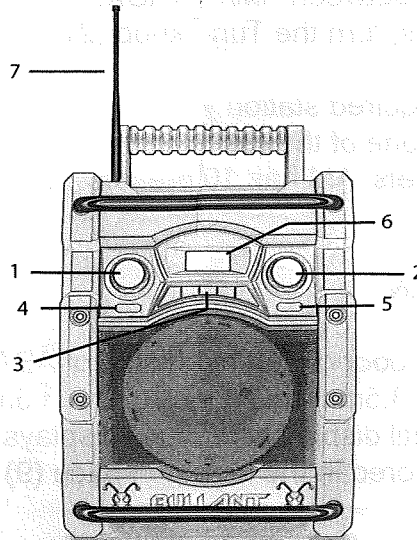


**bullant**



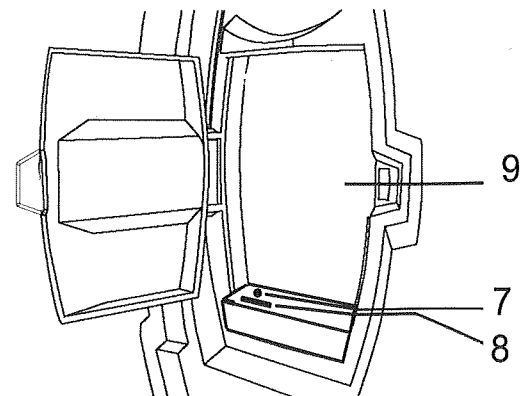
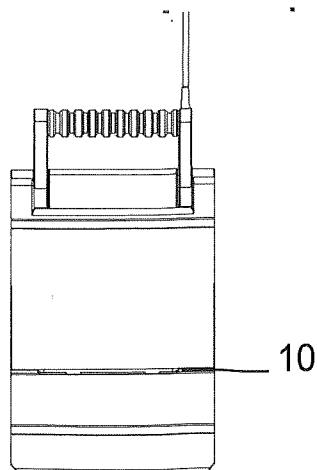
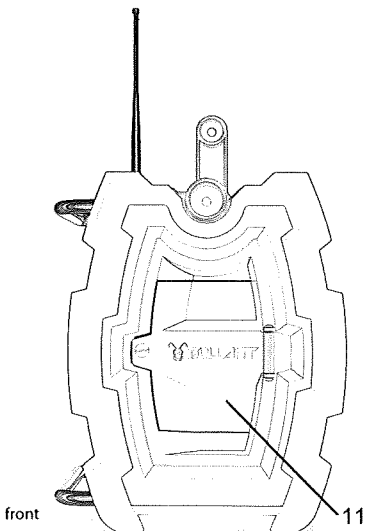
## ABA86WR AM/FM WORKSITE RADIO



### USER MANUAL

#### OPERATING CONTROLS:

- |                           |  |
|---------------------------|--|
| 1. Volume control/Menu    | 7. 3.5mm AUX IN                              |
| 2. Radio tuning/select    | 8. USB charging port                         |
| 3. Station preset buttons | 9. Storage space for music player/ipod/phone |
| 4. Mode                   | 10. AC adaptor socket                        |
| 5. Power on/off           | 11. Battery compartment door                 |
| 6. Display screen         |  |



## **Initial Setup and Radio Operation.**

Open the battery compartment door (11) and insert 8 x C size batteries making sure to observe polarity and close and secure battery door (batteries not included). You can also use the supplied AC mains adaptor.

- Press Power button (5) to turn on ABA86WR.
- Adjust Volume to desired listening level.
- Press mode button (4) to select between AM/FM/AUX.
- To tune in required radio stations, turn the Tune knob (2) or push down tune knob (2) for 3 seconds for auto scan.
- Once you have tuned in your required station you can save the station into the Station preset Buttons by holding down one of the (3).
- FM station memory has 20 presets. AM has 10 presets. To change the index presets momentary press the Tune Knob (2).

## **Using a Music player via AUX IN.**

- Open the Storage compartment door on left hand side of ABA86WR.
- Connect the Music player using 3.5mm audio jack to the 3.5mm AUX IN socket (7).
- Using Mode Button (4) press until display screen (6) displays AUX.
- The music player can now be stored in the storage space (9) and compartment door closed.

## **To charge your USB Devices.**

- Connect the USB device to the USB charging port (8) (lead not provided).
- The device that is being charged can be stored in this compartment until it is fully charged.