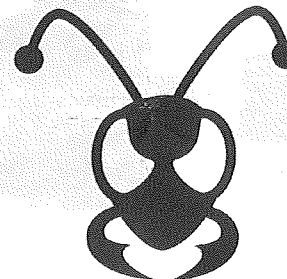


To answer an incoming call press button 2, to end a call Press the same button (Button 2)
When there is an incoming call, music is automatically paused and the ear-phones will play a ring tone. When the call is ended the device will automatically switch back to music program.

When the Ear muffs are powered down the pairing is disconnected. Depending on the Phone/BT Device it may be able to auto Re-Pair it self. If your Phone/Device can not auto pair to the ABA810 Go to the paired devices list on your phone/BT device and select BlueAudio once again (Your Phone should have remembered the device and have it listed as a pre paired device.

bullant



Instruction manual ABA 510/710/810

Thank you for purchasing the Bullant ABA series ear muffs.

Battery insertion:

The Bullant ABA series Earmuffs require 3 AAA Batteries to operate the electronic features of the product. However, the ear muffs can be worn as a passive hearing protection device without the batteries inserted.

To insert the batteries, slide the battery cover in the direction as indicated by the arrow mark on the cover.



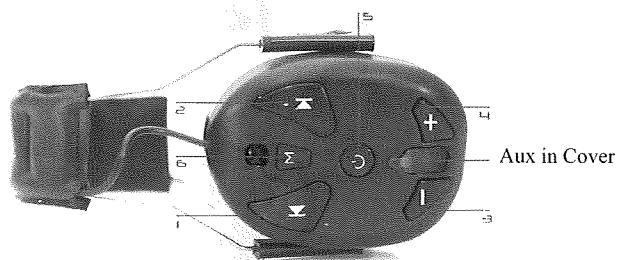
Slide to the right as indicated.

Insert each battery in the directions as indicated inside the battery compartment.

Slide the cover back into place until it clicks shut.

Note: Battery life will vary dependent upon the playback volume used. The higher the volume, the shorter the life. Please ensure that you turn the unit off when finished to prevent the batteries from draining whilst not in use.

Operating instructions:
Buttons Operational Explanation.



- 1 Station Back
- 2 Station Forward
- 3 Volume Down
- 4 Volume Up
- 5 Power On/Off
- 6 Mode

Mode: (Button 6)

The Mode button cycles between the various modes of the device. The sequence is different dependent upon the model and its included features.

ABA510: FM, AM, Reserved(Spare)

AUX IN is selected automatically when a device is plugged in.

For ABA710: FM, AM, Voice Comm, Reserved(Spare).

AUX IN is selected automatically when a device is plugged in

ABA 810: Blue Tooth, FM, AM, Voice Comm, Aux In

NOTE: Aux Input is not selected automatically when a device is plugged into the Aux in jack. Aux in is only selected via the mode

When the mic is connected the aux Jack is covered. In this situation use the BT Streaming functionality for Aux playback of music

Volume Up: (Button 4) Click this button once to increase the volume by one small step. Hold this button down to increase the volume continuously until the button is released.

Volume Down: (Button 3) Click this button once to decrease the volume by one small step. Hold this button down to decrease the volume continuously until the button is released.

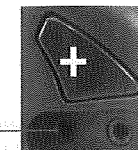
Forward: (Button 2) Press this button once to go Up one step in frequency. Hold this button in for 1 second or more and the unit will automatically seek to the next station (The next station up in frequency)

Back: (Button 1) Press this button once to Down one step in frequency. Hold this button in for 1 second or more and the unit will automatically seek to the next station (The next station down in frequency)

Power On/Off: (Button 5) Press once to toggle the Power On to Off and Off to On. When the button is depressed in to the unit the unit is on.

Aux In:

Connect an external music source via the Aux in 3.5mm stereo Phono Jack (Cable not included) The Aux in is selected automatically except for the ABA810 which is selected via the mode button..



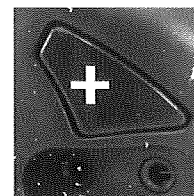
Blue Tooth Instructions: (For ABA 810 Only)

The ABA 810 is equipped with an advanced Blue tooth system.

The Blue Tooth systems primary function is its hands free phone operation. Blue tooth system has the capability to be used to make and receive phone calls without the need for removing the users hearing protection. In the case of receiving calls the wearer can receive and end phone calls without the need to touch the mobile phone that is paired.

In addition to phone functionality the system also allows for stereo streaming of music from a blue tooth equipped music device such as an i-phone or i-touch etc. In fact most mobile phones have the capability to store and stream music.

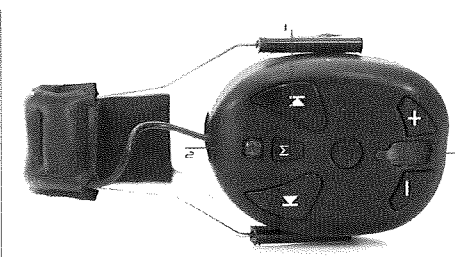
Hands free Mic boom:



Mic Input:

The Mic boom uses this port and uses the Aux port on the right for boom stability. (Aux in can not be used with mic boom in place. Use BT Streaming instead for external music input)

Pairing a Blue tooth device to your ear muffs:



- 1. Mode
- 2. Blue Tooth Button and Phone pickup
- 3. Mic boom cover

To Start the pairing mode .

Power on ABA810.

Select the BT Mode Via The Mode Button .

Set your Phone/BT device to search for The ABA810's BT Receiver (Name: BLUEAUDIO)

Select the device.

If asked for a code to access the BT device. The Connection code for pairing is 0000

Remove the Mic boom cover (3) and connect the Mic boom to the head set.

Note the Mic boom does not need to be connected for BT music streaming operations