

Actual transmission range of wireless monitoring may vary according to the weather, location, interference or building construction. All specifications are subject to minor change without prior notice.

Model No.	Imaging Sensor	Total Pixels	Horizontal Viewing Angle	Transmission Frequency	Minimum Illumination	Modulation Type	Bandwidth	Power Supply	Unobstructed Effective Range	Waterproof Capacity	Tube Diameter	Dimensions (W x D x H)	Approx. Weight	LCD Screen Type	Effective Pixels	Video System	Transmission Frequency	External Supply Voltage	Consumption Current (Max.)	Picture/Video Pixels	Video Size	Frame Rate	Video Output Level	Resolution	Dimensions (W x D x H)	Approx. Weight	Operating Temperature	Operating Humidity (Max.)
G8803	CMOS	840 x 480 (PAL)	36°	2488MHz	0 Lux	FM	1.5MHz	4 x AA batteries	10m (max.)	IP67 (for lens/tube only)	8mm	188 x 145 x 41 (mm) (including flexible tube)	288g	3.5" TFT-LCD	860 x 240	PAL/NTSC	2488MHz	2488MHz	700mA	640 x 480	27M bytes/frame	30 frames/second	0.8-1.3VPP/250mV	≤ 65dBm	100 x 70 x 85 (mm)	140g	-10°C-50°C/14°F-122°F	15-85%RH

SPECIFICATIONS

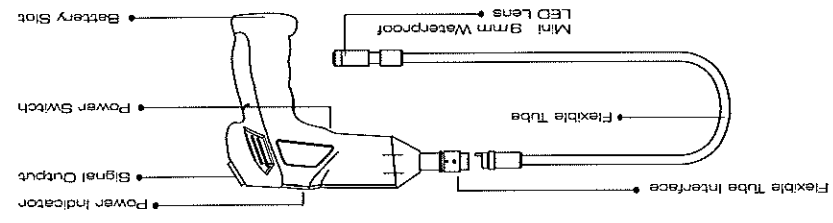
Welcome to our inspection video camera with color LCD monitor. Please read the user manual carefully before using this product. These products are designed as a remote inspection device, capable of recording video/taking pictures. Appropriate for use in surveying pipes or other hard-to-reach places, equipment or furnishing installation, car repair, etc. Features include waterproof LED lens, real-time viewing.

WELCOME

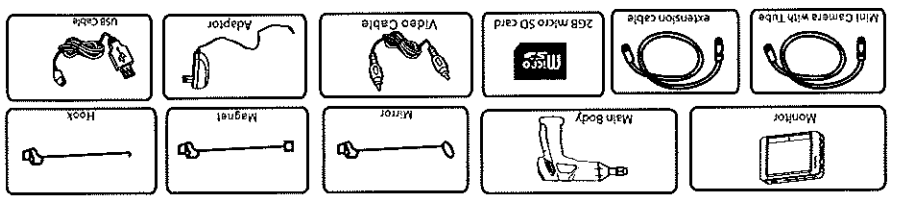
GENERAL SAFETY INFORMATION
WARNING! Read and understand all instructions. Failure to follow all instructions listed below may result in electric shock, fire and/or serious personal injury.

SAVE THESE INSTRUCTIONS!

- Prevent object and liquid entry. Never spill liquid of any kind on the video display unit. Liquid increases the risk of electrical shock and damage to the product.
- The unit is not shock-resistant. Do not use as a hammer and avoid high impact resultant from things such as dropping the unit from height
- Do not immerse camera handle or LCD screen in water. Avoid moisture, and store product in a dry place. Such measures reduce the risk of electric shock and damage. **The lens and the tube are water resistant when the unit is fully assembled, but the LCD screen and handle are not.**
- Do not use the camera if condensation forms inside the lens. Let the water evaporate before using again.
- Turn off the system if it is not in use.
- Attention should be given to the environmental aspects of battery disposal.
- Remove the batteries when cleaning the unit.
- Remove the batteries before storing the unit for a long time.
- When necessary, REPLACE ALL FOUR (4) BATTERIES in this unit with new ones, not one (1) or two (2) batteries at a time.
- Use only the size and type of battery specified.
- Be sure to install the battery with the correct polarity as indicated in the battery compartment.
- Properly dispose of batteries. Exposure to high temperatures can cause batteries to explode, so do not dispose of in a fire. Place tape over the terminals to prevent direct contact with other objects.
- Some countries have regulations concerning battery disposal. Please follow all applicable regulations.



STRUCTURE



PACKING LIST

- Allows for easy surveying of small, hard-to-reach places.
- Mini 9mm waterproof LED lens, 1.0 meter flexible tube.
- Manufactured and tested to IP67 waterproof standard.
- 3.5" TFT-LCD detachable/mountable monitor, built-in rechargeable Li-battery.
- Adjustable brightness on lens-mounted LED light.
- 3 useful accessories included: Hook, mirror and magnet.
- Multi-language support.

FEATURES

TROUBLESHOOTING

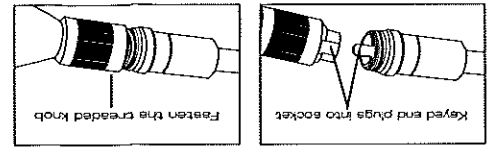
Problem	Possible Causes	Likely Solutions
Tool will not start	1. monitor not charged. 2. batteries need charging.	1. charge monitor 2. replace batteries in control handle 3. press the reset button to start
Monitor will not charge	1. adapter cable not attached properly 2. adapter not connected to power	1. make sure adapter cable is connected between monitor and adapter. 2. make sure adapter is securely plugged into wall socket.
Image too dark or light	1. LEDs near camera need adjustment 2. monitor display needs adjustment	1. use dial on control handle to adjust brightness of LEDs. 2. use contrast and brightness buttons on monitor to adjust image.



Follow all safety precautions whenever diagnosing or servicing the tool. Disconnect power supply before service.



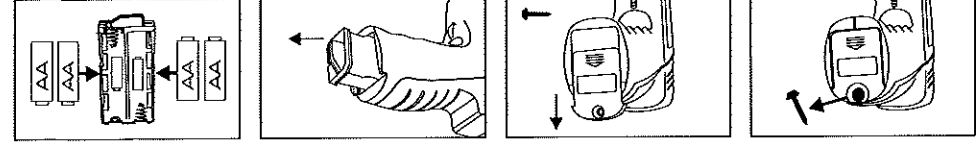
The graphics included in this user manual are subject to minor change without notice.



To connect the flexible tube camera with control handle, first make sure that the keyed end of the tube is aligned with the slot in the handle, then use slight force to push them together. Once properly aligned, twist the treaded knob clockwise until the connection is securely in place.

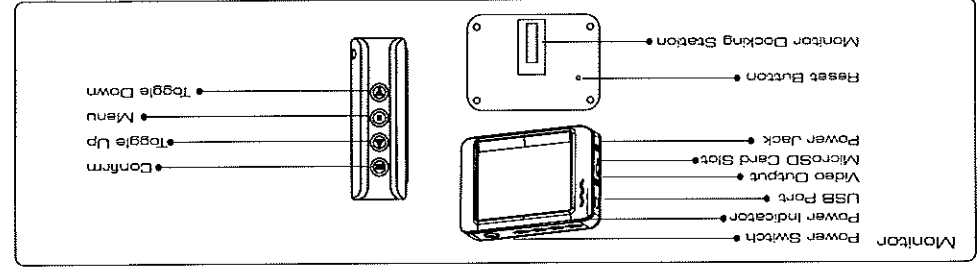
To Attach Flexible Tube with Handle

- Remove battery compartment and insert four (4) AA batteries into their appropriate slots, with proper orientation, as indicated on the battery compartment.
- Reinstall battery compartment and replace battery cover and screw.



To Install Batteries (Dry your hands before installation or replacing batteries.)

INSTALLATION



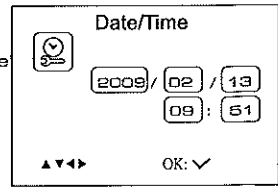
- #### View Version Information
- In the setting mode, press the (A) or (V) button to select 'SYSTEM SETTING', and then press 'OK' button.
 - Press the (A) or (V) button to select 'Version' and then press 'OK' button. You will now be able to view the version details of your product.

- #### Frame Rate Setting
- In the setting mode, press the (A) or (V) button to select 'RECORDER SETTING', and then press 'OK' button.
 - Press the (A) or (V) button to select 'Frame Rate' and then press 'OK' button.
 - Press the (A) or (V) button to toggle between different frame rates. Once your desired rate is selected, press 'OK' button to confirm and exit.

- #### Time Stamp Setting
- In the setting mode, press the (A) or (V) button to select 'RECORDER SETTING', and then press 'OK' button.
 - Press the (A) or (V) button to select 'Time Stamp' and then press 'OK' button.
 - Press the (A) and (V) buttons to toggle between on and off. Once your desired selection is made, press 'OK' button to confirm and exit.

- #### Recording Type
- In the setting mode, press the (A) or (V) button to select 'RECORDER SETTING', and then press 'OK' button.
 - Press the (A) or (V) button to select 'Recording Type' and then press 'OK' button.
 - Press the (A) or (V) button to toggle between 'still' and 'video'. Once your desired selection is made, press 'OK' button to confirm and exit.

- #### Date/Time Setting
- In the setting mode, press the (A) or (V) button to select 'Date/Time' and then press 'OK'. The right interface will appear:
 - Press 'OK' button to select Date or Time; Press the (A) or (V) button to adjust selection; Press the (M) button to confirm and exit.



- #### Event Playback
- In the setting mode, press the (A) or (V) button to select 'EVENT PLAYBACK', and then press 'OK' button.
 - Refer to user manual instructions on Playback of Video/Picture, Deleting Video/Picture, and Deleting Folder for guidance.