

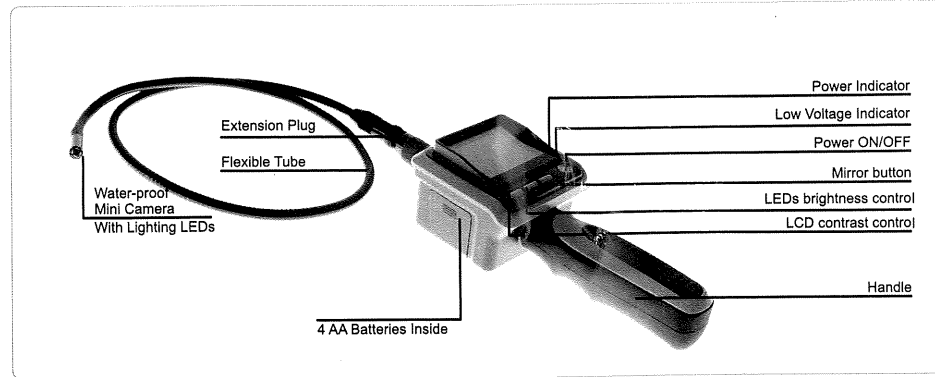
Welcome

Congratulations on your purchase of our inspection video camera with color LCD monitor. Please read the user manual carefully before using this product. This product is designed as a remote inspection device, appropriate for use in surveying pipes or other hard-to-reach places, equipment or furnishing installation, car repair, etc.

Packing List



Structure

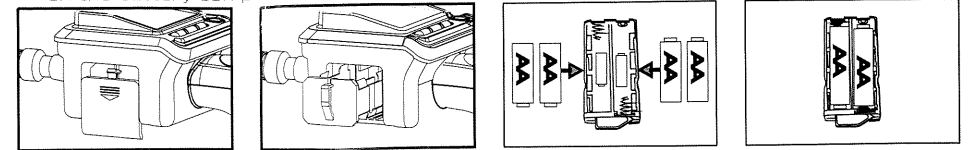


-1-

Installation

To Install Batteries

1. Remove the cover and liberate the battery compartment from its casing;
2. Insert four (4) AA batteries into their appropriate slots, with proper orientation, as indicated on the battery compartment;

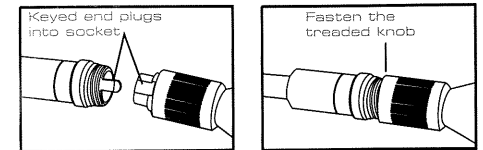


3. Reinstall battery compartment and replace battery cover.

NOTE Dry your hands before installation or replacing batteries.

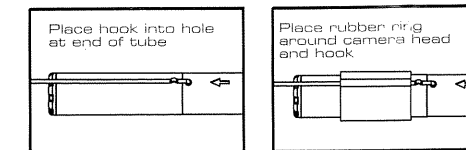
To Attach Flexible Tube with Monitor

To connect the flexible tube camera with monitor, first make sure that the keyed end of the tube is aligned with the slot in the handle, then use slight force to push them together. Once properly aligned, twist the treaded knob clockwise until the connection is securely in place.



To Install Accessory

The three (3) included accessories (mirror, hook and magnet) are all attached to the tube in the same way as illustrated below:

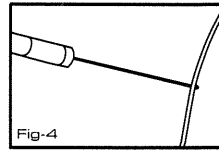
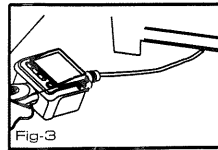
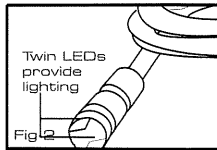
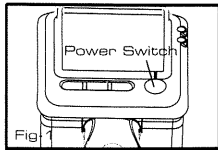


-2-

To prepare accessory for installation, push down on stem-side of black interface while pulling away from adjacent side. This will open the base of the accessory. Next, align inside of stem-side to either treaded surface at the base of camera head. Tighten to secure the accessory in place.

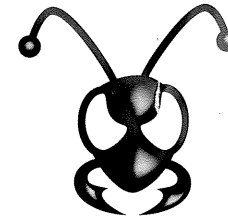
Operation

1. Press the power switch to turn the camera on (refer to Fig-1). The power indicator will illuminate and the LCD will become viewable.
2. If the image on the LCD is unclear, adjust brightness, contrast and mirror by toggling the buttons on the monitor face.
 - * LEDs Brightness Control: The 6 levels of LED brightness can be adjusted by pressing the LEDs Brightness Control button (refer to Fig-2).
 - * LCD Contrast Control: The 8 levels of LCD contrast may be adjusted by pressing the LCD Contrast Control button.
3. To rotate the orientation of the image displayed on the LCD by 90°, press the Mirror button. There are four (4) possible image orientations that you can toggle through by pressing this button.
4. When in use, the tube should easily maneuver itself into position. Do not apply excessive force (refer to Fig-3).
5. The accessories included with Explorer Compact can be used to retrieve small items like dropped rings or screws (refer to Fig-4).



TIP: The flexible tube can be bent into numerous shapes that may help you explore areas you otherwise thought were impossible to see.

NOTE: Do not immerse the monitor in water. Store in a dry place. Such measures reduce the risk of electric shock and damage. Only the lens and tube are water resistant when the unit is fully assembled.



INSPECTION CAMERA Model: G6000 bullant USER MANUAL

