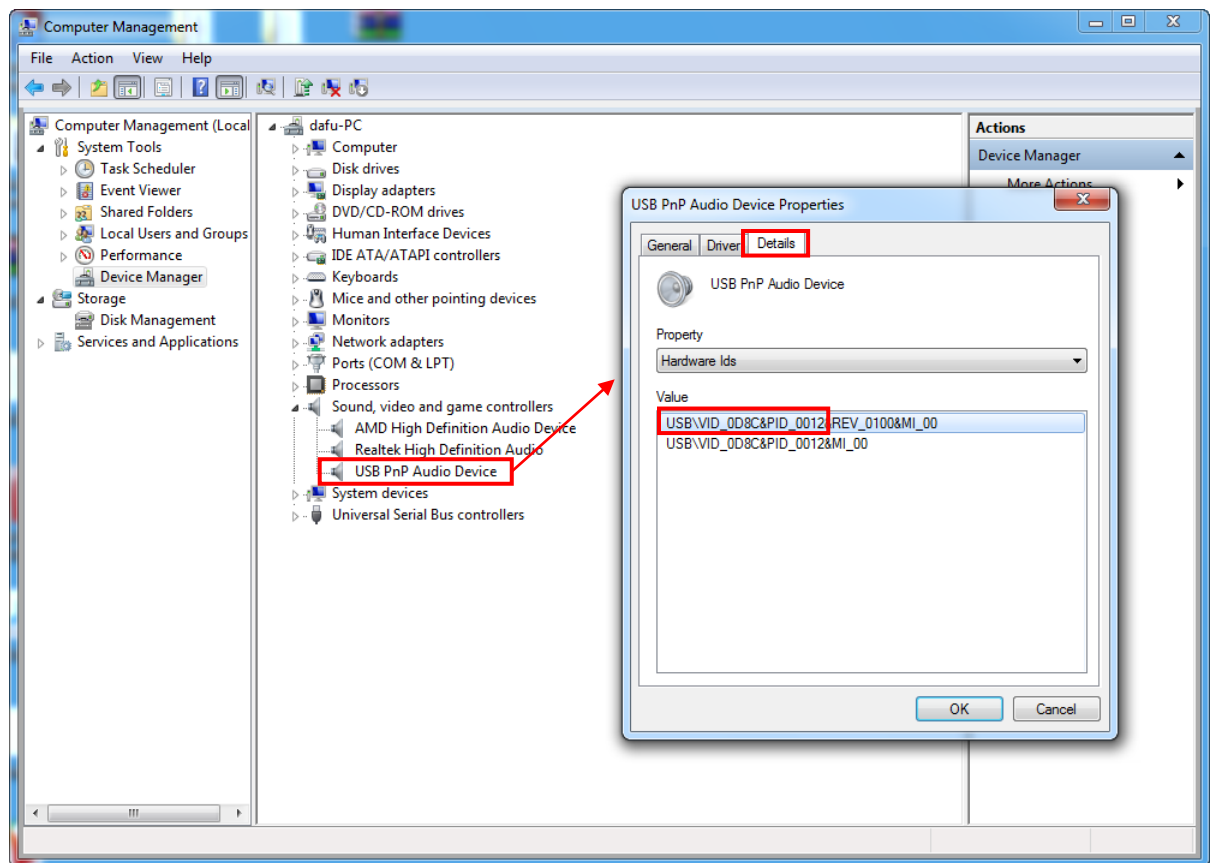


1 Basic Connection and Setting

- 1) Use a USB cable (Type A-Type B) to connect the HW Device to your PC
- 2) Open the Windows **Control Panel** → **Device Manager** → double click mouse left button on the “**USB Audio Device**” item to open the **USB Audio Device Properties** dialog box.
- 3) In the “Detailed” tab, get the device’s **VID/PID**



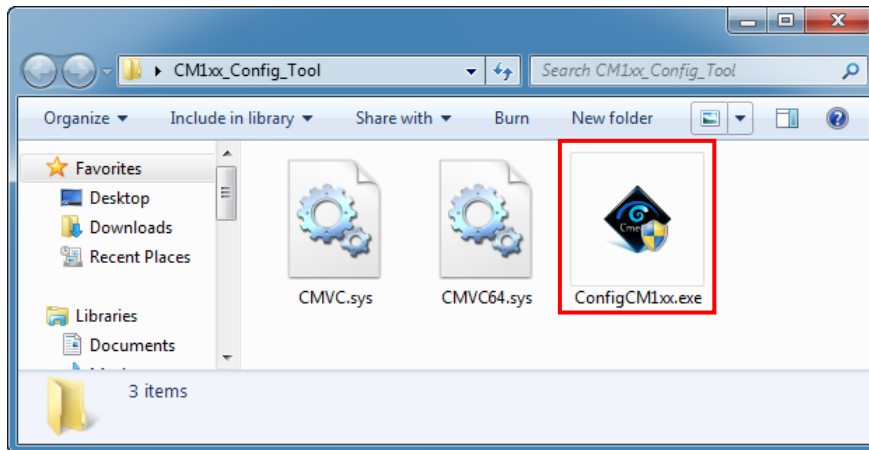
Device VID/PID List:

	VID	PID
CM108B	0D8C	0012
CM119B	0D8C	0013
HS-100B	0D8C	0014
CM118B	0D8C	0016

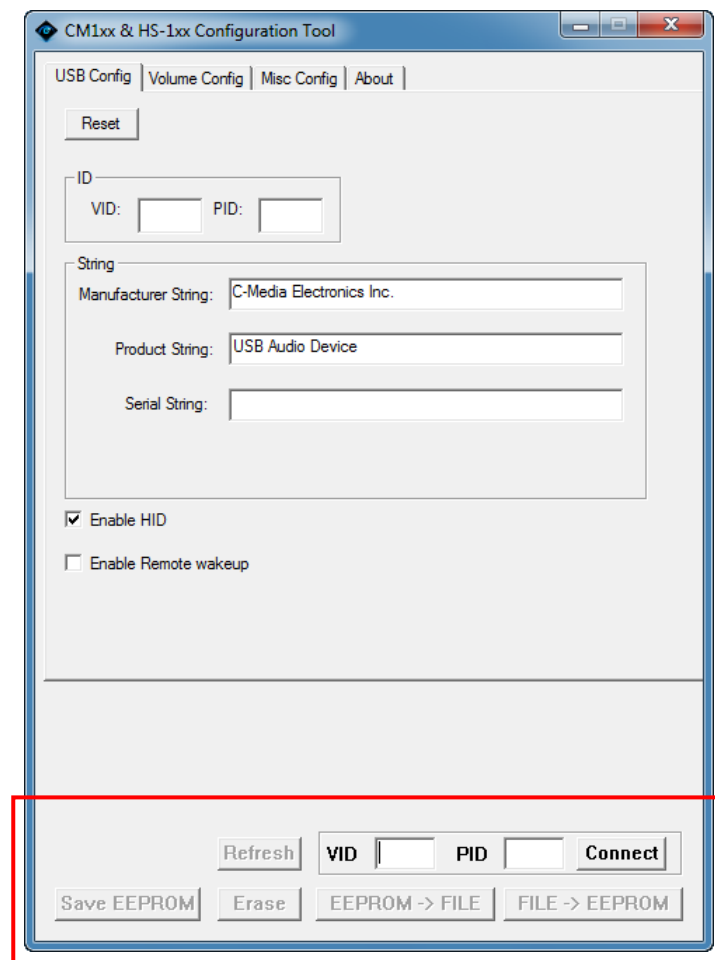
2. Start Using the Configuration Tool

4.1 Connect

- 1) Double click mouse left button on the Configuration tool
“ConfigCM1xx.exe” file.

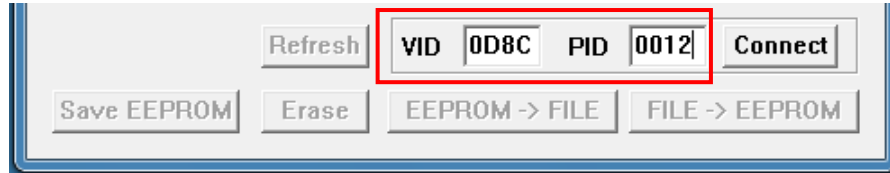


- 2) You can see the configuration tool dialog box as below.



3) Fill-in the HW device's VID/PID

Step1: Fill-in the HW device's VID/PID (0D8C/0012).



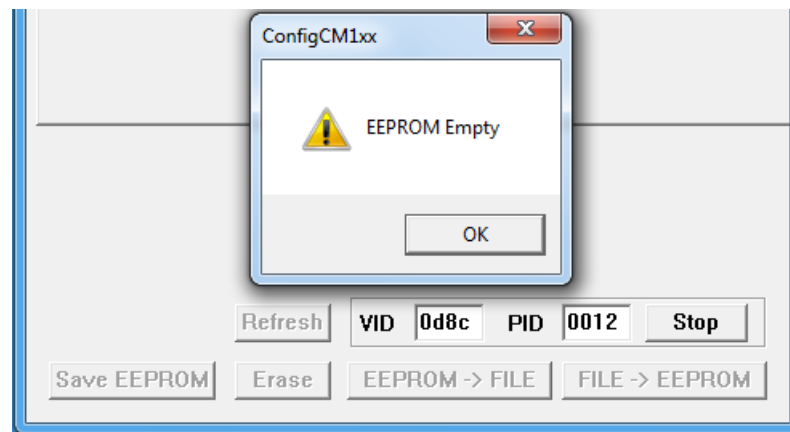
Step2: Click [Connect] button.



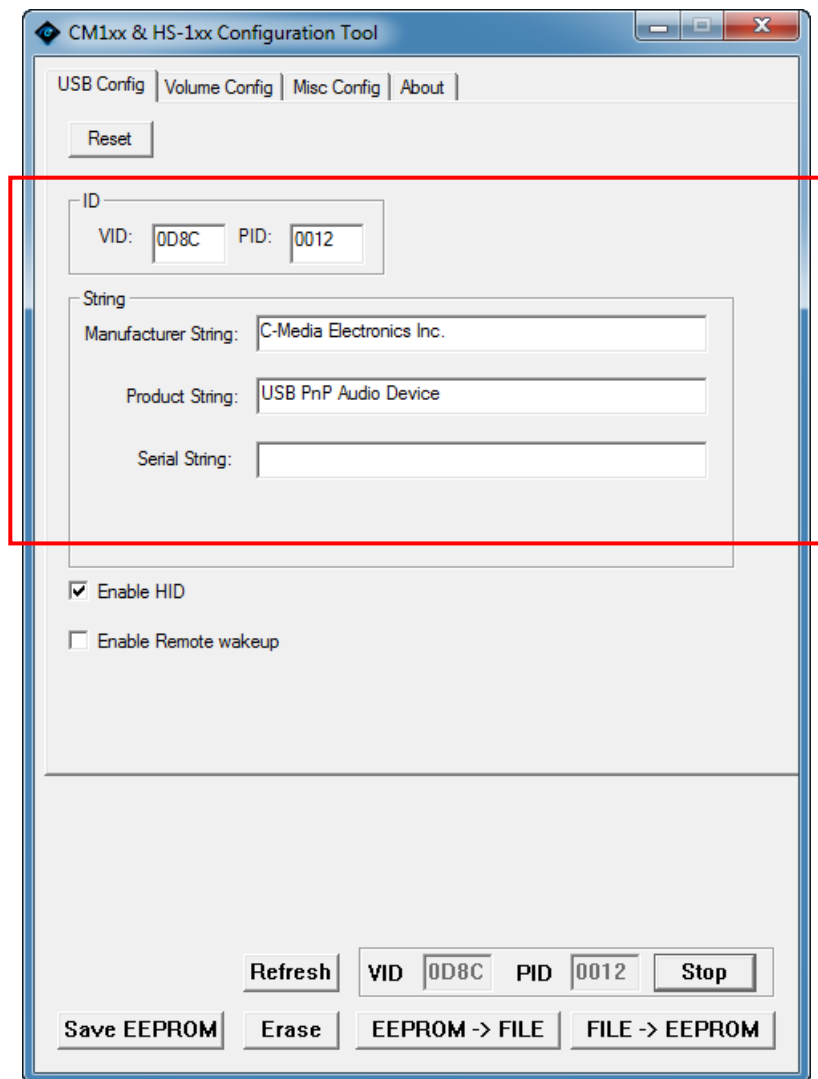
Step3: Ccheck the connection status.

◆ Successful connections

If the connection is successful but the EEPROM data is empty, you can see a dialog box as below.

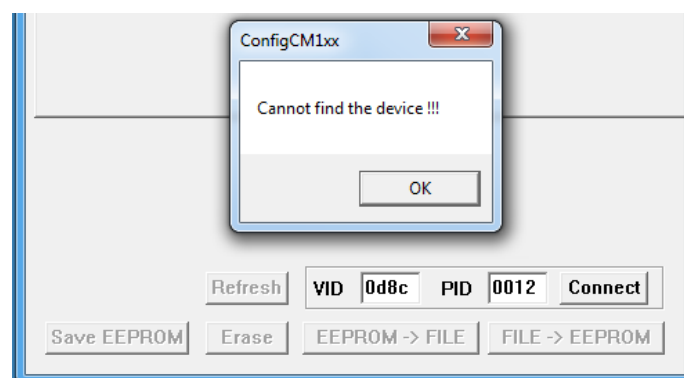


If the connection is successful, you will see a dialog box with default data as below.

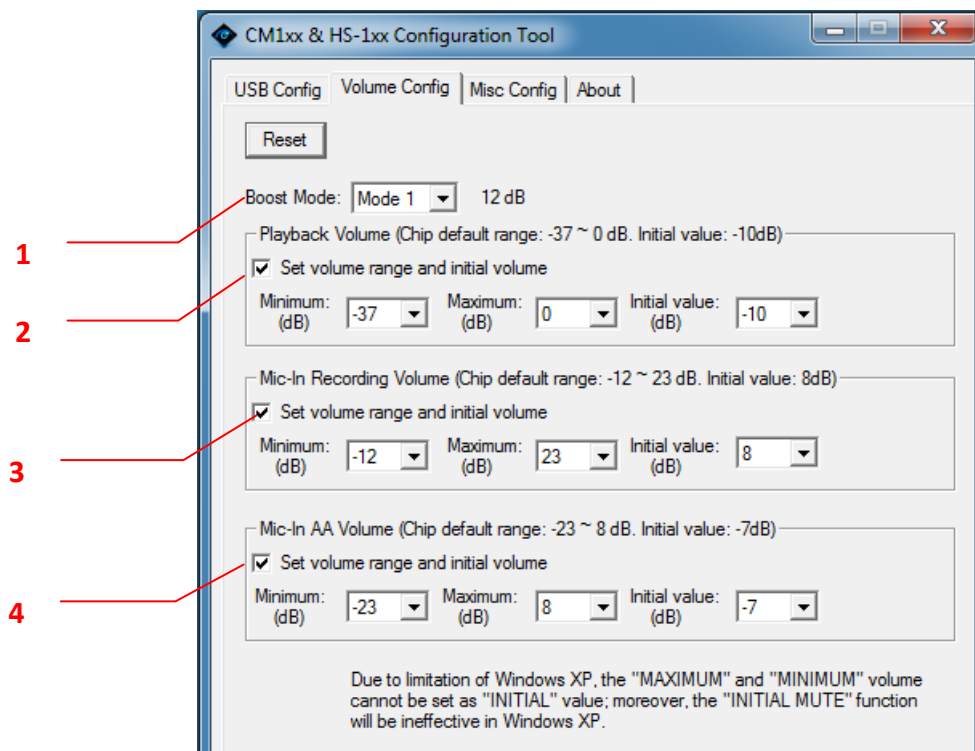


◆ Failed connection

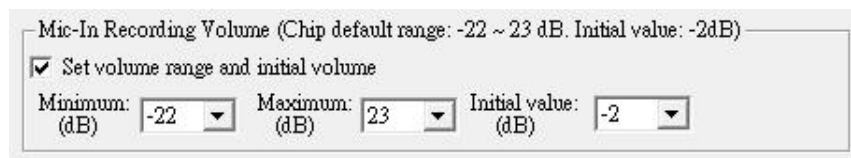
If the connection is failed (Hardware is not exist.), you will see a dialog box as below.



3. Volume Config Page



4. Mic-In Recording Volume



Set volume range and initial volume

Set the Mic-In range and initial volume is valid

Minimum (dB):

Set the Mic-In minimum volume

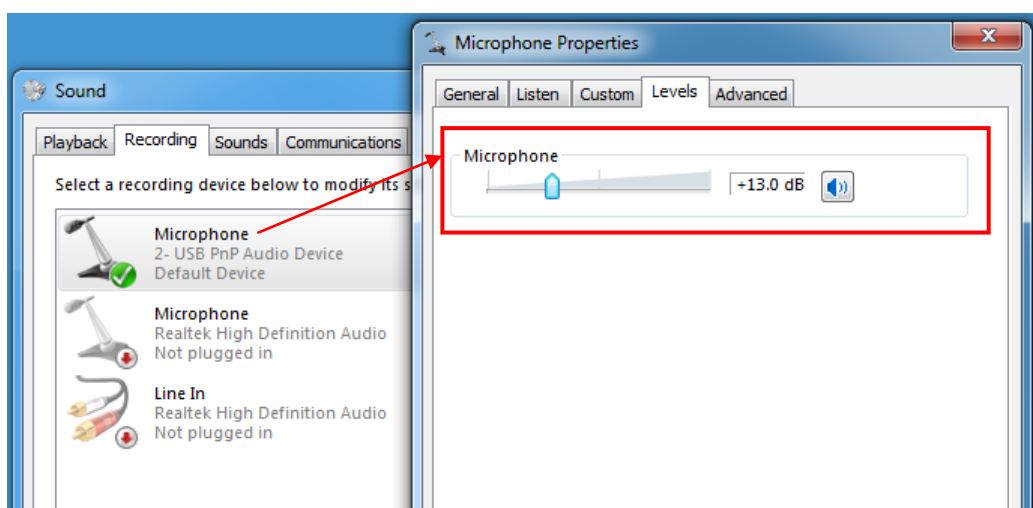
Maximum (dB):

Set the Mic-In minimum volume

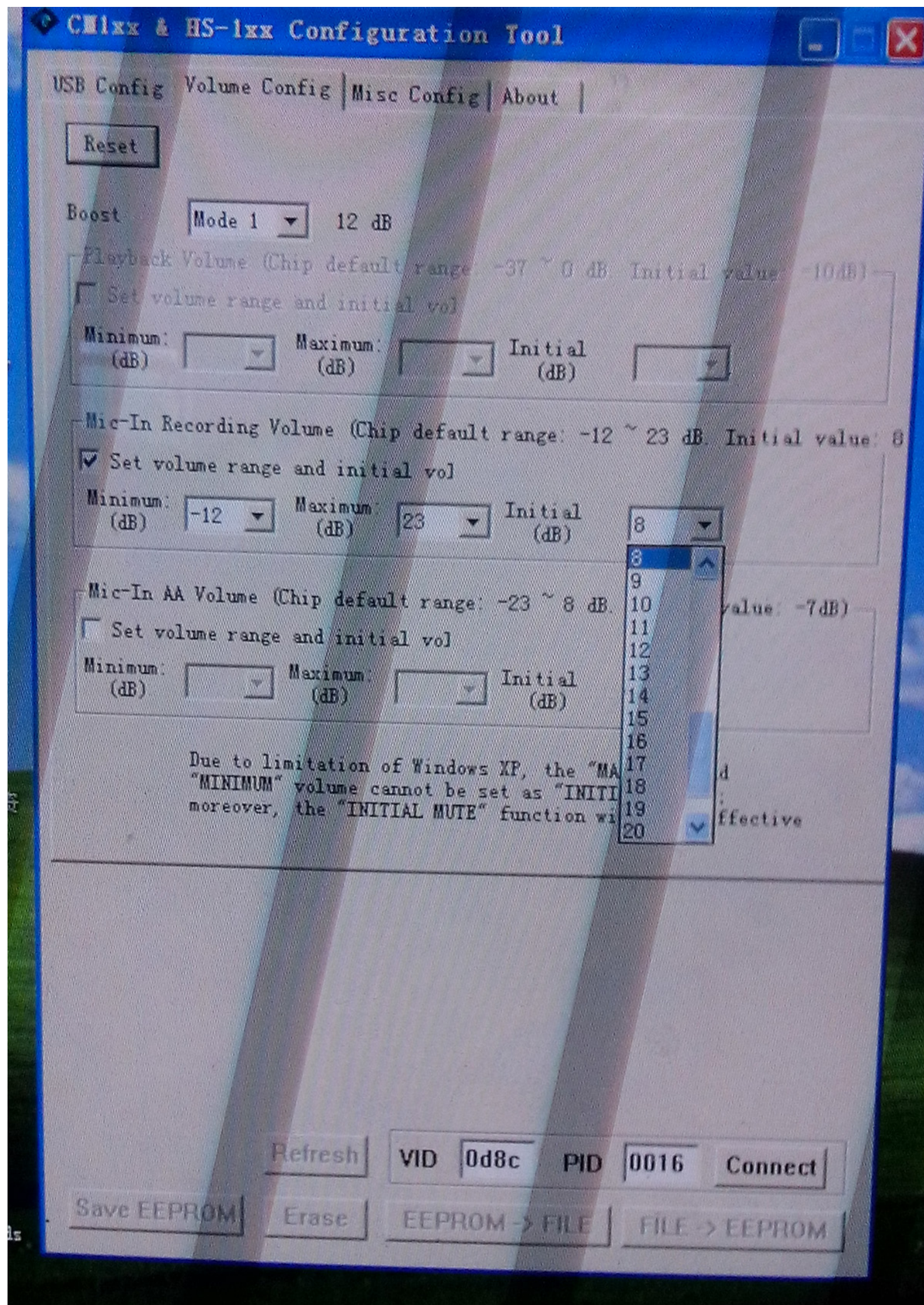
Initial value (dB):

Set the Mic-In initial volume

Mic-In Recording Volume Check:



5. setting gain as below ,you could choose 1~22



6. Saving EEPROM

This function can write data to the EEPROM, whenever the EEPROM settings are changed, the hardware device needs to **re-plug** to make the settings take effect.

When all settings have set, click on the [Save EEPROM] button to start writing data into EEPROM.



When the saving is completely you will see below dialog box.

