



USER MANUAL

Wire controlled Selfie Shutter Monopod

Model No: APSSW



CE FC

Version: V1.0

INTRODUCTION:

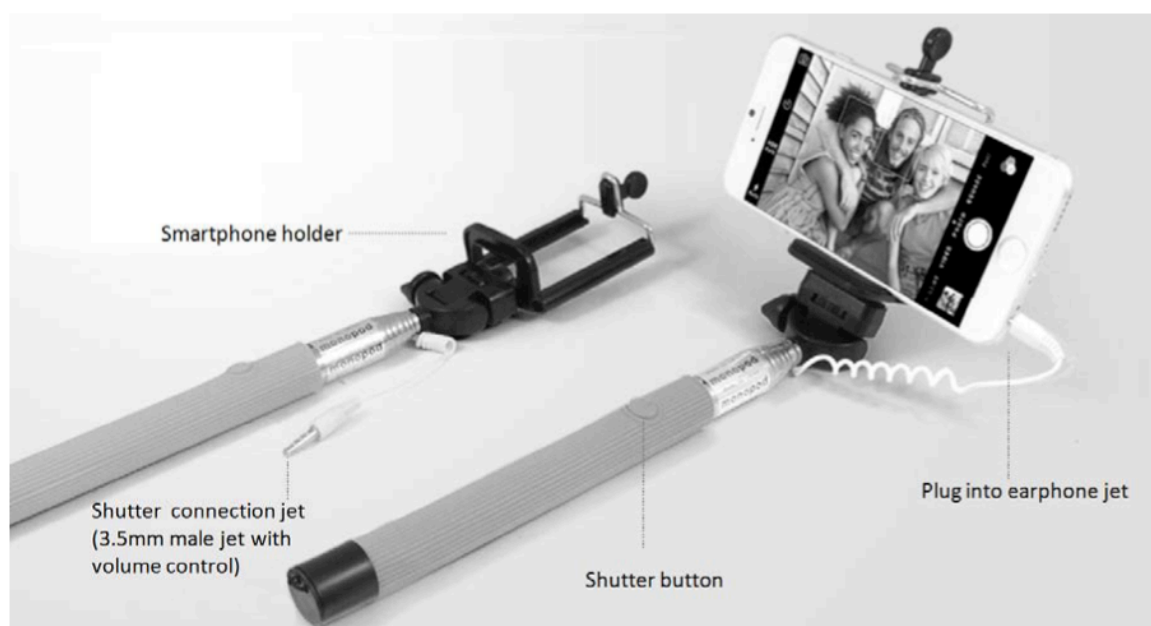
This is a monopod with wire controlled selfie shutter button specially designed for the smartphone models equipped with volume control function by earphone. It is a plug and play device and is compatible with both Android and iOS phones. No battery's and no pairing are required. The max length of monopod can be extended over 1 meter. It has an indentation design along the metal rod to avoid smartphones turning down by weight or sudden movement. It is best used for travel and out-door use in taking photos or recording a movie clip with your smartphone or digital camera by yourself. With the assistance of the monopod, you can capture wider angle photos due to its length.

Compatible Notice:

1. Only Compatible with iOS 5.01 or Android 4.2.2 and above
2. Only suitable for the smartphones equipped with volume control by earphone



PRODUCT ILLUSTRATION:



CONNECTION INSTRUCTIONS:

1. Insert a smartphone into the holder of the monopod.
WARNING: Make sure that the phone is attached securely and safely as it may result in the phone falling and breaking.
2. Connect the monopods 3.5mm jack into the earphone socket of your smartphone.
3. Open your smartphones camera application and begin to use by pressing the shutter button on the monopod.

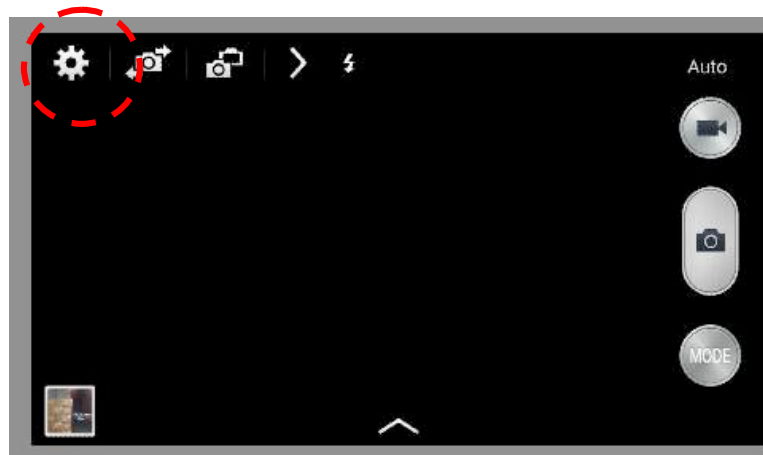
SAFETY CAUTIONS AND MAINTENANCE:

- a) Do not drop the monopod on the floor/ground as it can become damaged and broken.
- b) Do not use abrasive cleaning solvents to clean the monopod.
- c) Do not place the device in the hot temperature or left inside a car under direct sunlight, as it can result in a malfunction.
- d) Do not expose the device in contact with sharp objects as this will scratch and damage the monopod.
- e) Do not attempt to disassemble the monopod, as it does not contain serviceable components.
- f) If you do not use the monopod for a long period of time, be sure to store it in a dry place, free from extreme temperature, humidity and dust.

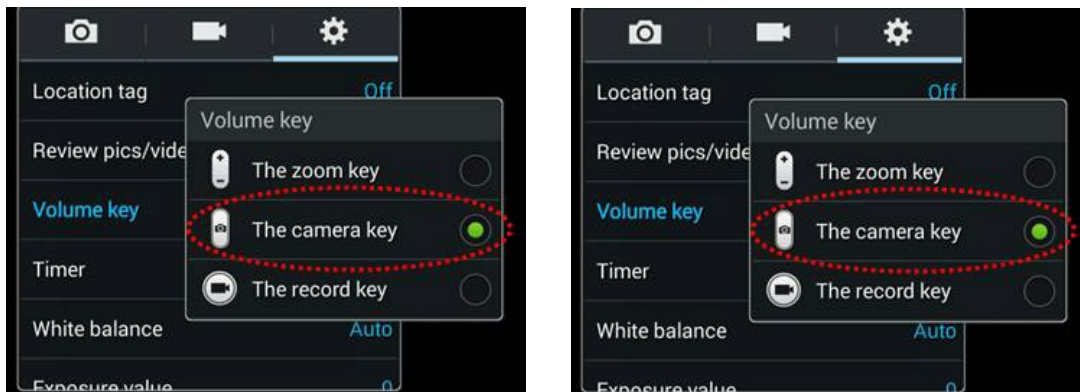
TROUBLE SHOOTING:

Because this device simulates the volume up button to take a picture, you may need to set this in the settings of your cameras settings. If your phone is zooming in when trying to take a picture or performing another unwanted function, you may need to change the volume up function in order for it to take pictures. If this happens follow the procedure below.

- 1) First try to locate the camera settings if this is available.



- 2) Select volume key setting and set it to be the camera button. This means that when the volume buttons are pressed, it will take a picture.



Some smartphones are pre-programmed to automatically open the music player when earphones are plugged in. This may stop the volume controls to be used outside the music player thus not allowing the monopod to function properly.

SPECIFICATIONS:

MONOPOD

- Stainless steel
- Extended max length: 1.04M
- Folded length: 16.8cm
- Max weight handled: 230 grams
- Indentation design along the metal rod to avoid smartphones turning down by weight or movement

PHONE HOLDER

- Flexible mount height: 5.5cm - 8.5cm (Max)
- Material: ABS and stainless steel

ACCESSORIES:

- Adjustable adaptor with universal 1/4 screw lock
- Smartphone holder (model A) x 1

TECHNICAL ASSISTANCE:

If you need assistance with the Aerpro APSSB now or in the future, contact Aerpro Support
Australia: www.aerpro.com/Contact