

7" WIRELESS SMARTPHONE MONITOR



USER MANUAL

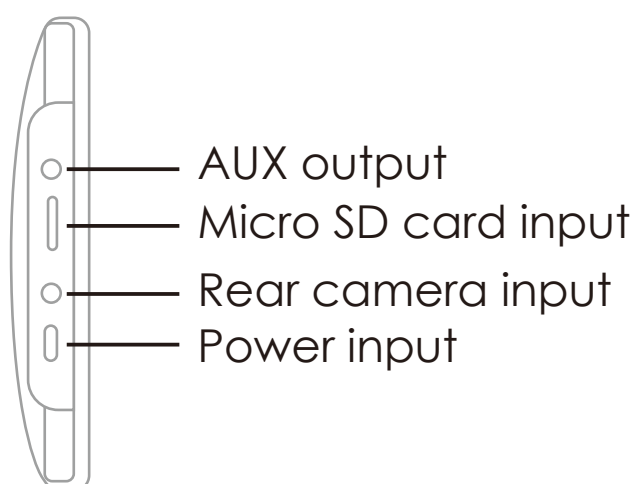
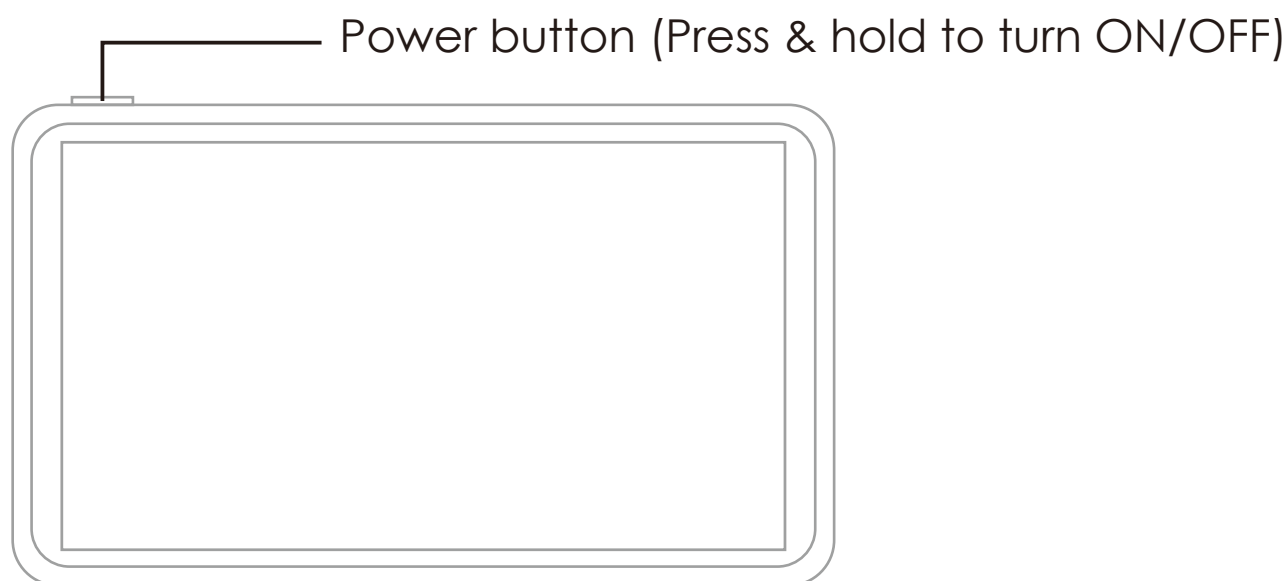


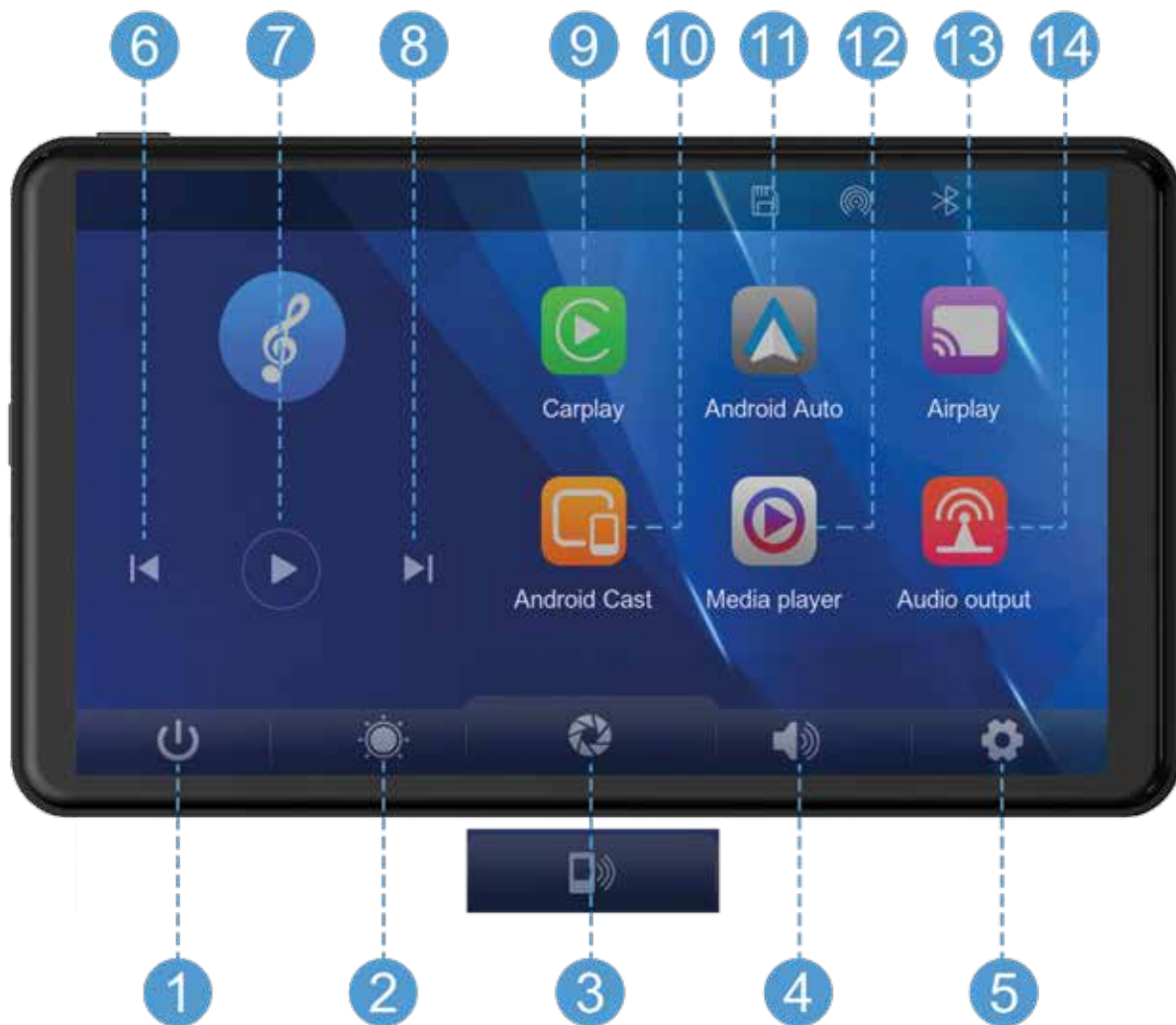
Introduction.....	2
Interface display.....	3
Audio output settings (FM transmitter).....	4
Audio output settings (AUX output).....	5
Audio output settings (Monitor speaker).....	5
Audio output settings (Apple CarPlay & Android Auto)...	6
Connecting via Apple CarPlay.....	7
Connecting via Android Auto.....	8
Connecting via Apple Airplay.....	9
Connecting via Android Mirror Cast.....	10
Bluetooth Music.....	11
Bluetooth	11
Media player.....	12
Settings.....	13
Camera input.....	14
Reverse guideline calibration.....	14
Inclusions.....	15
Product features.....	15
Technical assistance.....	15

Introduction

The AM7M01 is a 7-inch Capacitive Touch-screen Multimedia player designed to seamlessly integrate with your smartphone.

This innovative device serves as a second display on your dashboard, seamlessly integrating Android Auto and Apple CarPlay for effortless smartphone connectivity. With wireless smartphone connectivity via Bluetooth & WiFi, you can effortlessly sync your smartphone to the AM7M01, and enjoy audio playback using a variety of options such as the FM transmitter function using your car's sound system or high-quality audio playback through Auxiliary Audio Out. You can even utilise the inbuilt speaker. Plus, for added convenience and safety, this exceptional device has reverse camera input. The Aerpro AM7MRC HD 1080P reversing camera is an accessory that can be purchased separately.





- 1. Screen off:** Tap to turn off the screen.
- 2. Brightness:** Tap to adjust screen brightness
- 3. Camera/Connection shortcut:** Click to view camera/connections
- 4. Volume/FM Transmit/Bluetooth/AUX:** Changes with audio outputs
- 5. Settings:** Click to enter the settings interface
- 6. Previous song:** Click to switch to the previous song
- 7. Play/Pause:** Tap to play/pause music
- 8. Next song:** Click to switch to the next song
- 9. Apple CarPlay:** Use Apple CarPlay for iPhone
- 10. Android Cast:** Phone screen mirroring for Android phones
- 11. Android Auto:** Use Android Auto for Android
- 12. Media Player:** Click to play video or music
- 13. AirPlay:** Phone screen mirroring for iPhone
- 14. Audio Output:** Change the audio output type of the display

Audio output settings (FM transmitter)



Use the FM transmitter mode if you want to listen to audio on your cars sound system without connecting any wires.

1. Tap the Audio output icon on the home screen. Select the FM icon to use FM transmitter function.
2. Turn on the factory head unit and tune it to the same frequency as the monitor.

NOTE: You must always be on the same frequency as the FM Transmitter as the unit will not automatically switch in the event of a call or playing music.

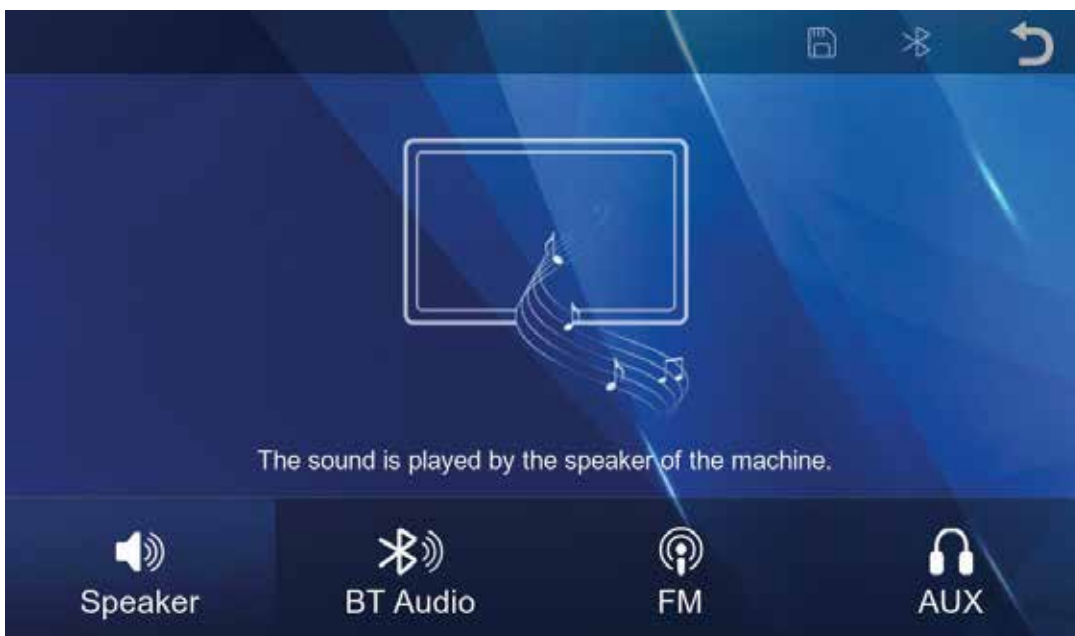
If you have issues with interference, try changing the FM frequency to one that isn't being used to broadcast radio stations.

Audio output settings (AUX output)



- Output audio over auxiliary to your factory head unit system.
1. Tap the Audio Output icon on the home screen and select AUX along the bottom.
 2. Plug in an AUX cable between the monitor's AUX output and the AUX input of your head unit.

Audio output settings (Monitor speaker)



- Use the internal speaker to output audio from the monitor.
1. Tap the Audio Output icon on the home screen and select the Speaker icon along the bottom.
- NOTE:** In this mode, you can adjust the volume by pressing the speaker icon along the bottom on the home screen.



The 'BT Audio' feature allows you to use the CarPlay/Android Auto features on the display whilst streaming audio to your factory audio system over bluetooth if supported.

1. Make sure that the 'BT Audio' feature is selected.
2. Then connect your device via Apple CarPlay/Android Auto to the 7 inch monitor using the instructions in this manual.
3. Once your phone is connected, your device will automatically disconnect to the bluetooth from the 7 inch monitor. You must then connect your smartphone to the head unit's bluetooth. Once connected, audio from Apple CarPlay/Android Auto will start playing through your vehicle's factory sound system over bluetooth.

NOTE: You can also adjust the bluetooth volume from your phone using this method. Not all factory/aftermarket head units will support this feature and you may encounter disconnections or poor audio quality depending on your vehicle/device.

Music may not automatically start playing in this mode and may need to be played manually. We do not recommend this feature for head units that support Wireless CarPlay or Wireless Android Auto.

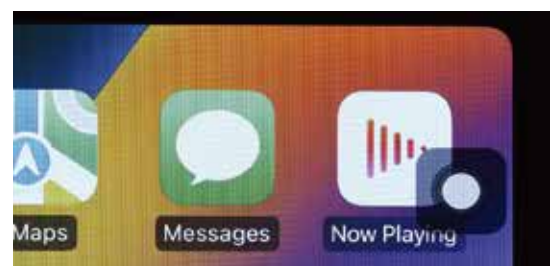
Connecting via Apple CarPlay

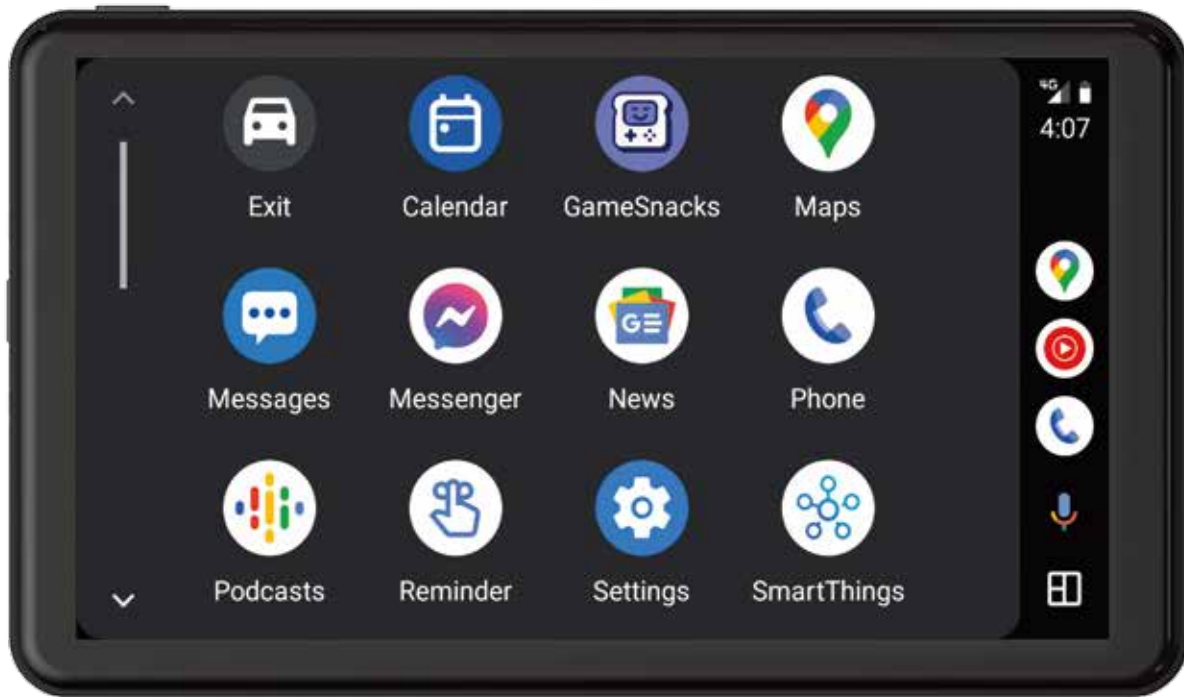


1. Tap the Apple CarPlay icon on the home screen to activate the Apple CarPlay function.
2. Before using Apple CarPlay wirelessly, turn on the Bluetooth and WiFi function on the compatible device.
3. Navigate to the Bluetooth settings on your compatible device and select AM7M01- followed by some numbers and letters for pairing.
4. A pair message and a pairing request code may appear on your compatible device and head unit. Click allow to accept
5. Apple CarPlay should now display on screen and will now automatically connect to the last paired device when powered on. If you do not want your phone connected to the unit, simply turn off Wi-Fi and Bluetooth.

Shortcut screen icons

When using Apple CarPlay or Android Auto, a white circle shortcut icon will appear on the top right. Pressing this will show a list of icons allowing quick access to features. (This can be disabled in settings)





1. Tap the Android Auto icon on the home screen to activate the Android Auto function.
2. Before using Android Auto wirelessly, turn on the Bluetooth and WiFi function on the compatible device.
3. Navigate to the Bluetooth settings on your compatible device and select AM7M01- followed by some numbers and letters for pairing.
4. A pair message and a pairing request code may appear on your compatible device. Click allow to accept.
5. Follow on-screen instructions that may appear on your smartphone and display.
6. Android Auto should now automatically display on screen and will now automatically connect to the last paired device when powered on.
7. Follow on-screen instructions that may appear on your device and head unit. If you do not want your phone connected to the unit, simply turn off Wi-Fi and Bluetooth.

Connecting via Apple Airplay



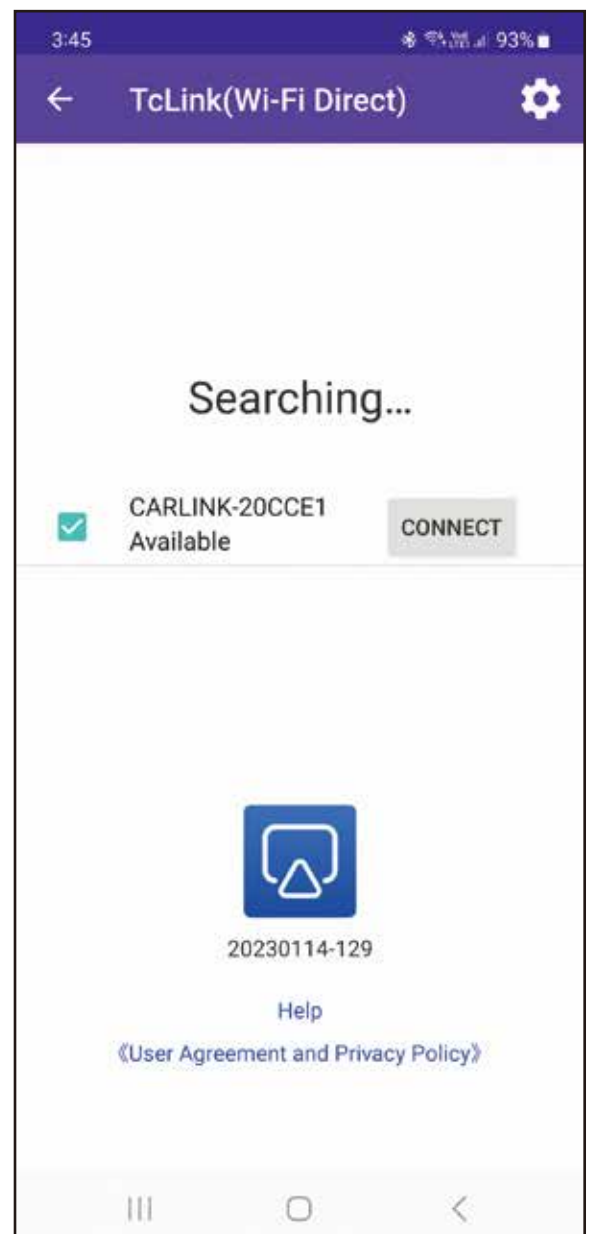
1. Tap the Apple AirPlay icon on the home screen to activate Apple AirPlay function.
2. Connect a compatible Apple phone to the Wi-Fi displayed on your screen. Typically starts with CARLINK-XXXXX. The password is '12345678'.
3. Once connected go to the 'Control Centre' on your iPhone by typically swiping down from the top right-hand corner of your screen or swiping up from the bottom centre and navigate to the 'Screen Mirroring' icon.
4. Select 'SmartScreen' on your device to mirror your screen to the display.



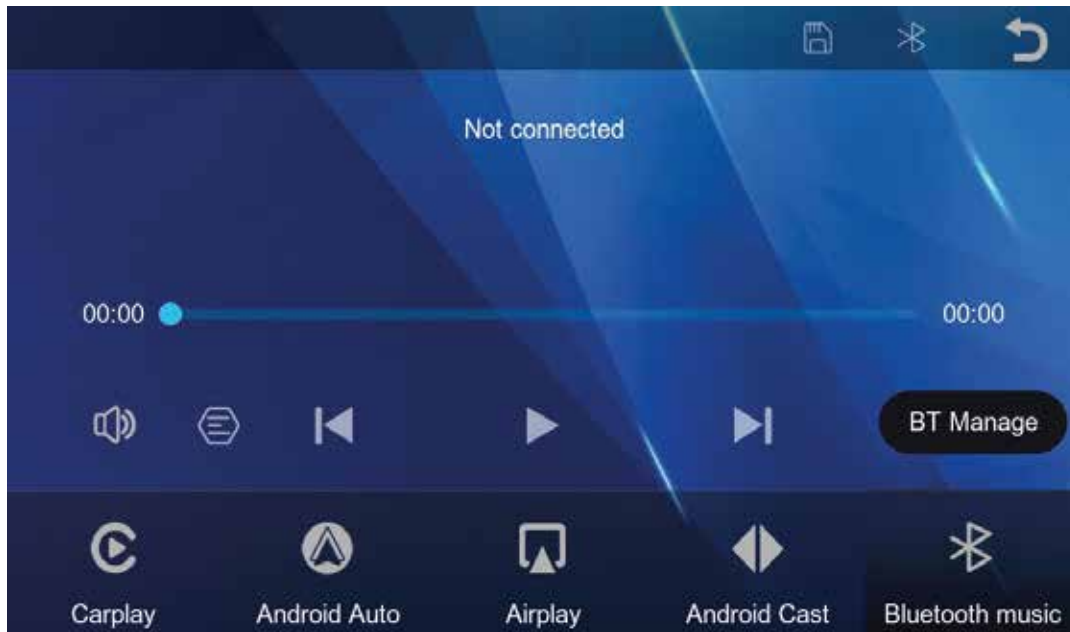
Connecting via Android Mirror Cast



1. Tap the Android Cast icon on the home screen to enter Android Mirroring where you can mirror your Android's smartphone screen to your display.
2. Download the 'TcLink' app on your smartphone by scanning your QR code on screen.
3. Once downloaded and installed, open the app and connect to the to CARLINK-XXXXXX. (You may have to navigate to the settings of the application and ensure that the 'Connection Mode' is set to 'Wi-Fi Direct')



Bluetooth Music

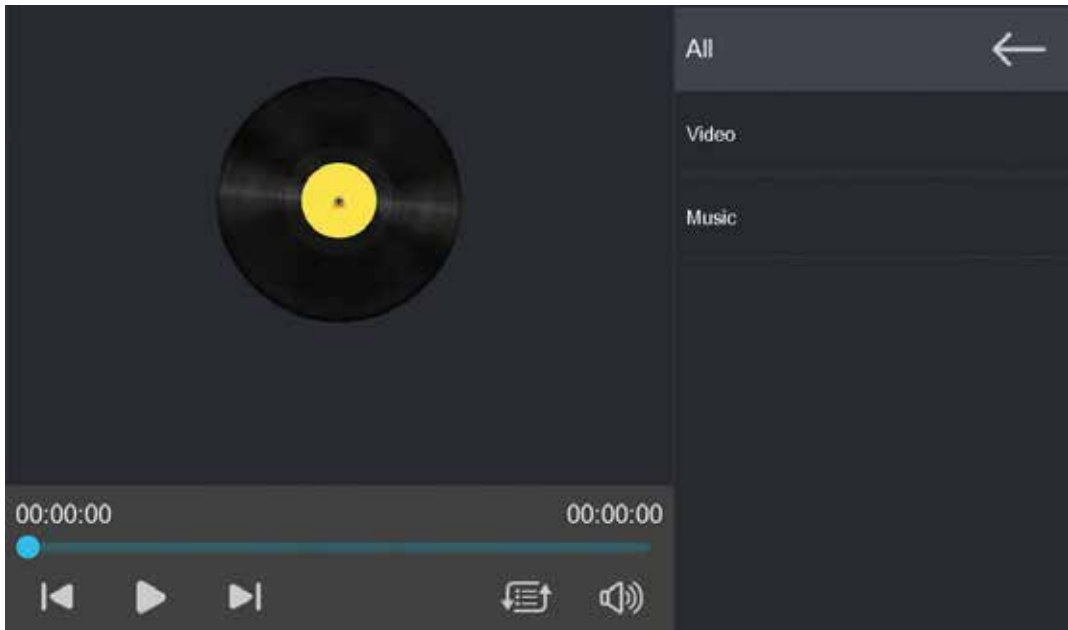


1. Turn on the Bluetooth of your smartphone and select the Bluetooth Music option.
2. Tap the BT Manage option on the display to connect your smartphone over Bluetooth. (see 'Bluetooth' Section)
3. Once connected you can play music from the display.

Bluetooth (Setup information)

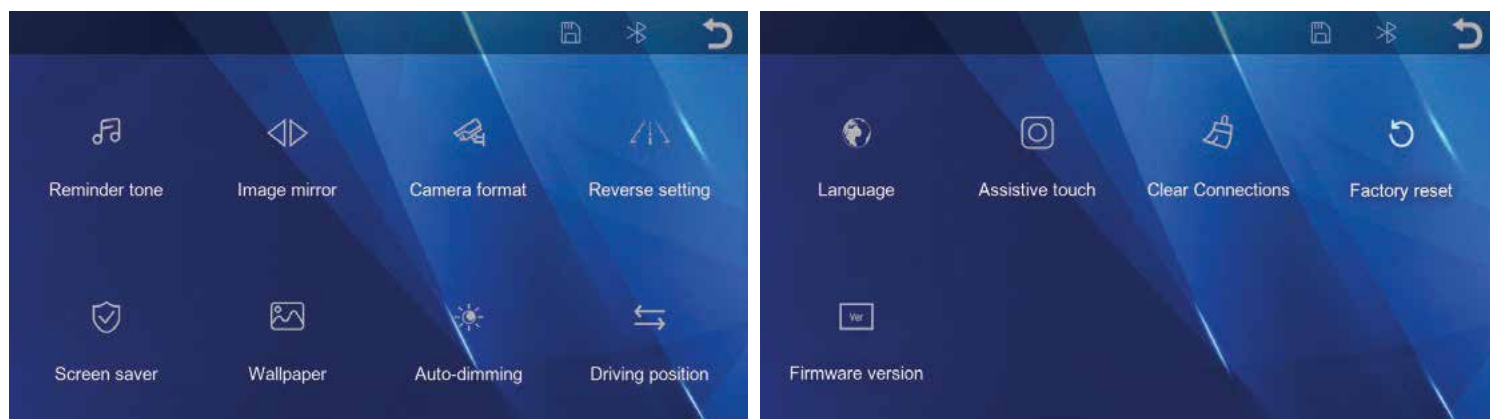


Here you will be able to see and edit the Bluetooth device name. The default name is typically AM7M01- followed by a string of numbers and letters. You can turn Bluetooth off or on, see if a device is currently paired, unpair the current device or disable bluetooth auto-connect.



Tap the Media Player icon on the home screen to enter the Media Player function which allows the user to play video or music files from an Micro SD Card.

Settings



Tap the Settings icon on the home screen to enter the Monitor settings. Tap the icons to enter each setting, tap the return icon on the top right of the screen to exit settings.

NOTE:

Some of these settings are unavailable if the camera is not connected.

Setting	Function
Reminder Tone	Turn ON / OFF
Image mirror	Turn ON / OFF
Camera format	720P / 1080P
Reverse setting	ON / OFF / Calibration
Screen saver	Turn off / 10 sec / 30 sec / 1 min
Wallpaper	Use arrows to select
Auto-dimming	ON / OFF / Night brightness / Start / End time
Driving Position	Left Hand Side / Right Hand Side
Language	Multiple
Assistive touch	Disables shortcut screen icons (Page7)
Clear connections	Clears Bluetooth, Wi-Fi & Cast devices
Factory Reset	Resets Monitor back to factory settings
Firmware	Software version

Camera Input (Aerpro AM7MRC reverse camera sold separately)



Tapping on the camera icon on the home screen will display the reverse camera. Tap the screen to reveal the home screen icon. Press to exit back to home the home screen.



NOTE:

The guidelines will not show when pressing this button. They will only show if the camera is wired to a reverse trigger and the car is in reverse. This camera icon will be replaced with a phone pairing icon when the rear camera is disconnected.

Reverse guideline calibration

You can use the calibrate button in the 'Reverse Setting' menu to adjust the reverse guidelines. Follow the on screen instructions to adjust guidelines.



Inclusions

1 x 7 inch monitor 1 x Type-C power adapter 1 x AUX cable
1 x Surface mount bracket 1 x Surface mount adhesive pad

Attaching the Surface mount adhesive pad

The surface mount adhesive pad is double sided and needs to be attached to the surface mount bracket before use.

Additional accessories (sold separately)

Aerpro AM7MRC 1080P Reverse camera with guideline support

Product features

- 7 inch FHD 1024*600 IPS touch screen
- Supports Apple CarPlay / Android Auto / Apple AirPlay / Android Cast
- FM transmitter support
- Supports bluetooth music playback
- Micro SD Card music & video playback
- Micro SD Card supports up to 256GB (Class10)
(Micro SD Card not included)
- CarPlay & Android Auto voice assistant support (where applicable)
- Power, surge, overload, over voltage, under voltage and short circuit protection
- Adhesive mount
- Size (182*116*66mm)
- Weight (300g)

Technical assistance

If you need assistance setting up or using your Aerpro product now or in the future, call Aerpro Support Australia

TEL: 03 – 8587 8898 FAX: 03 – 8587 8866 Mon-Fri 9am – 5pm AEST

This manual is considered correct at time of printing but is subject to change. For latest manuals and updates refer to the website.

AERPRO.COM 

While this product is compatible for use with Bluetooth, it is not made or endorsed by Bluetooth SIG inc.