

AM9X / AM10X / AM9XFW Update Guide

(Video Guide - <https://youtu.be/Z-VyU5Q6Ycl>) (Video outdated, please only use as visual reference after reading through this guide as the written guide includes extra information)

Notes before Continuing

- Your currently saved settings will be reset to factory default on your Aerpro Headunit. You can take pictures of any settings you have changed, such as EQ sliders, so you can restore those settings after the update is complete.
- You will also require a blank USB device with a storage capacity of 32GB or less that is formatted in FAT32.
- We recommend updating to the latest version only if you are having issues or will be utilising one of the new features.
- If you have any issues with the head unit not going into firmware update mode, try using a different USB device. The head units are picky about which USB stick is being used.
- USB Sticks that we have tested and worked for us
 - SanDisk Cruzer Blade USB 2.0 32GB
 - SanDisk Cruzer Glide USB 2.0 32GB
 - SanDisk Cruzer Blade USB 2.0 32GB (pack of 3)
 - SanDisk Cruzer Blade USB 2.0 16GB (pack of 5)
- What didn't work for us
 - SanDisk Cruzer Blade USB 2.0 16GB
 - SD card + Adaptor

Android users are required to do an extra step as a part of the latest update. Make sure to read all the steps in full to the end.

You can check if your Aerpro headunit requires an update by navigating to the System Version section on your headunit in the settings and comparing the date of the current firmware to that of the firmware on our Aerpro website.



If the date on the Aerpro website is later than the date listed on your head unit, then an update is available.

Note, that there isn't any harm in updating the firmware anyway if you're unsure.

AM9X / AM10X / AM9XFW Update Guide

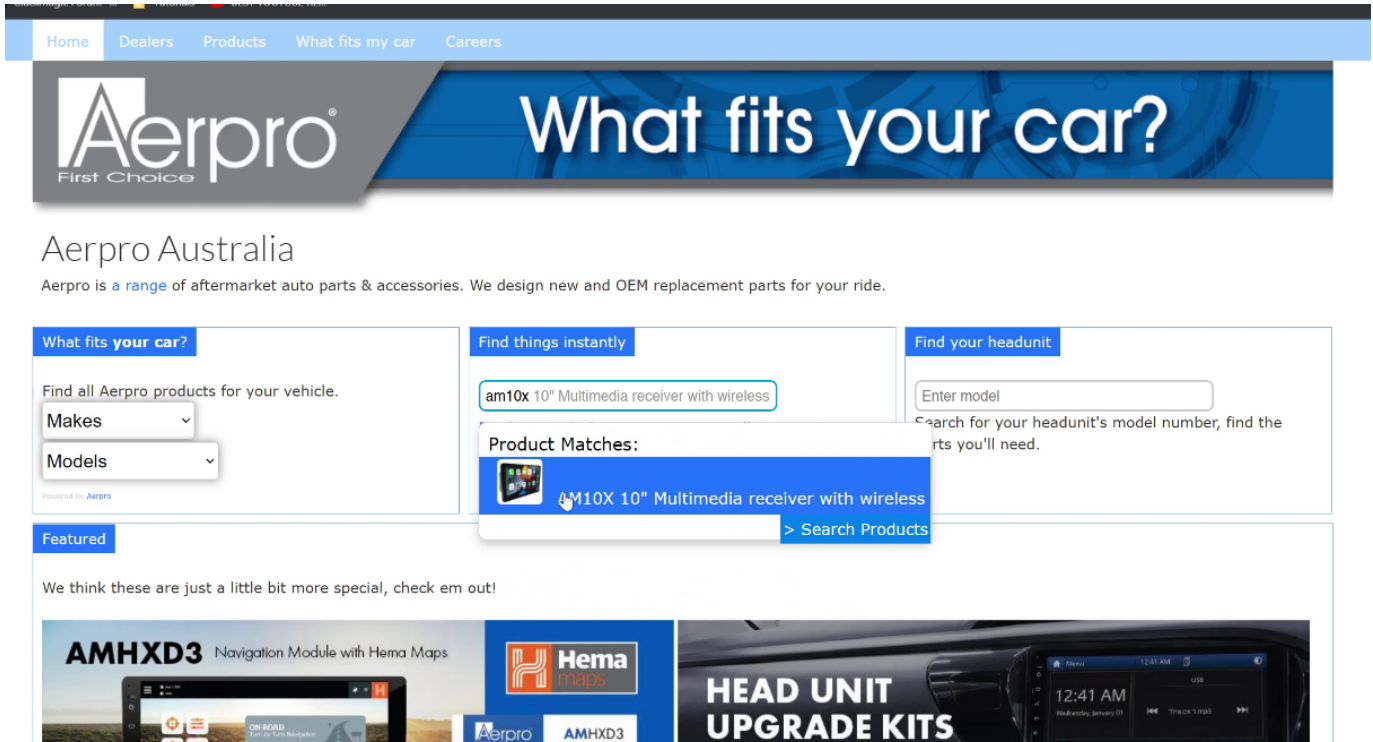
The Version name in the System Version section of the head unit corresponds to the type of headunit and firmware you will need for your headunit

AV-1297W-XXXXX = AM9X 9" head unit (<https://aerpro.com/am9x>)

AV-1307W-XXXXX = AM10X 10" head unit (<https://aerpro.com/am10x>)

AV-1337W-XXXXX = AM9XFW Floating Headunit (<https://aerpro.com/am9xfw>)

Navigate to the Aerpro website (<https://aerpro.com>) and search for your head units model number based on the system version your head unit lists.



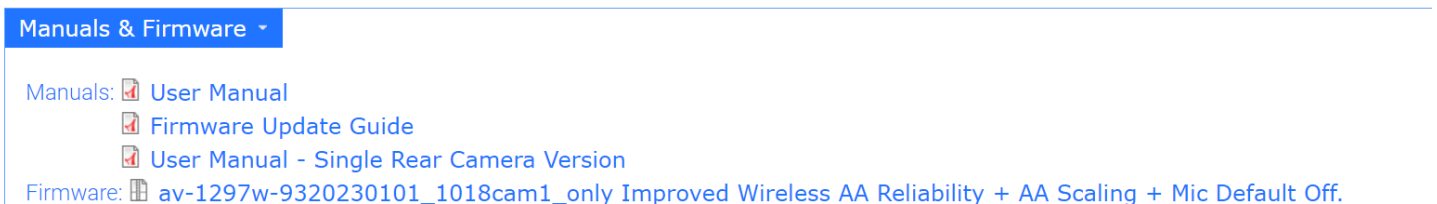
Scroll down the bottom and click the zip file to download the firmware update.

The files will be contained in a zip file. We can use Windows built in zip manager to open the zip file to view the files

NOTE

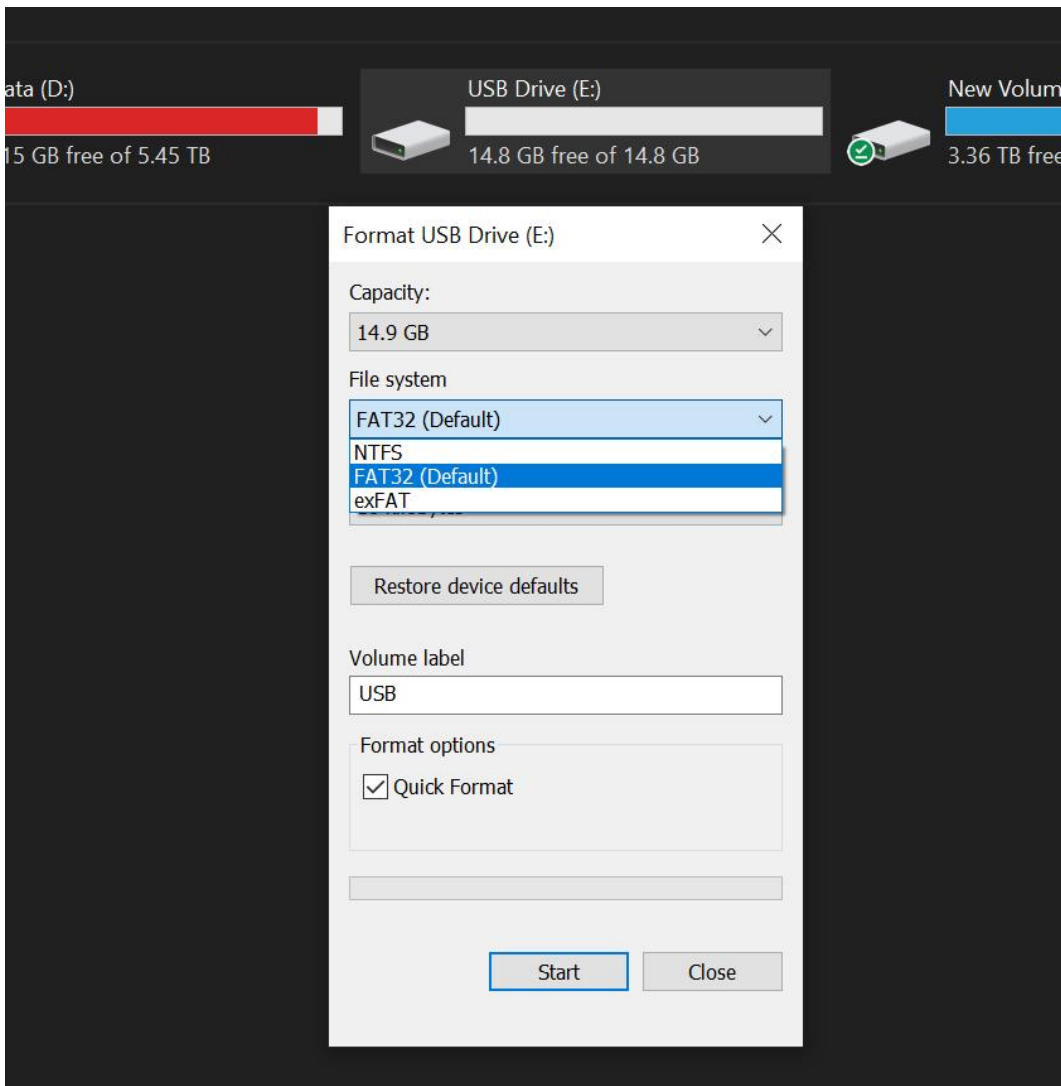
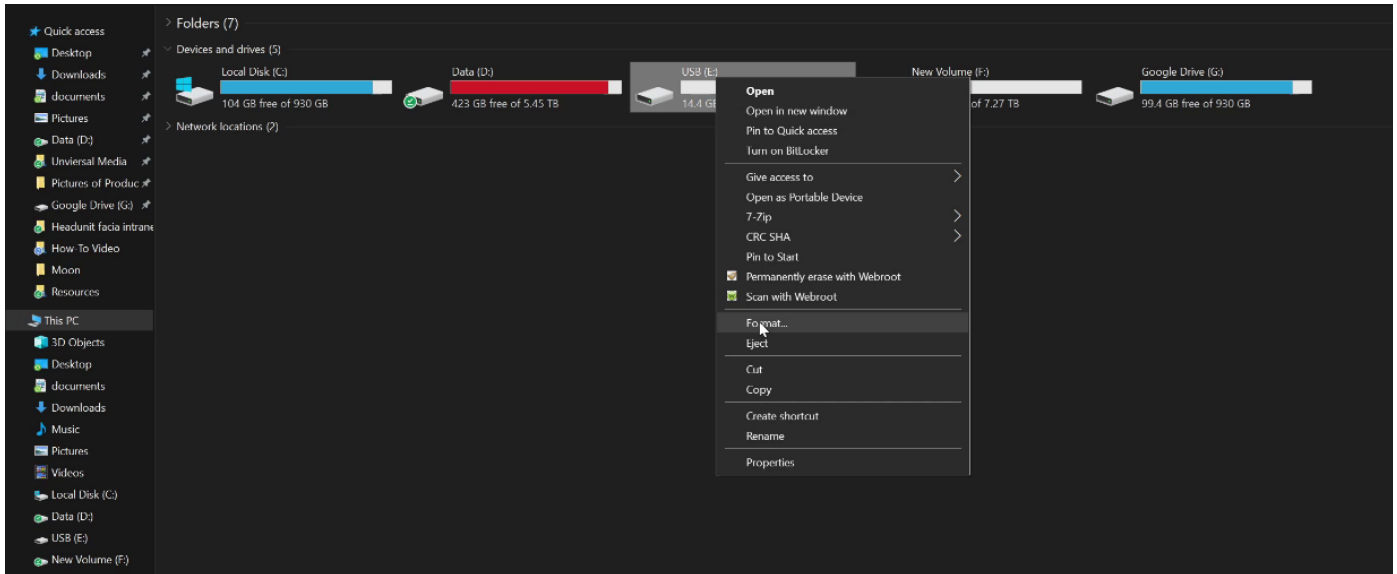
There may be two versions of the firmware, one labelled 'cam 1 only' and the other labelled 2 cam. If your headunit came with a single Rear camera in, and your home screen doesn't not have a 'Cam R & Cam 2' button like the image, then you have to pick Cam 1 only firmware.

If you have those buttons on your home screen then pick the Cam 2 firmware.



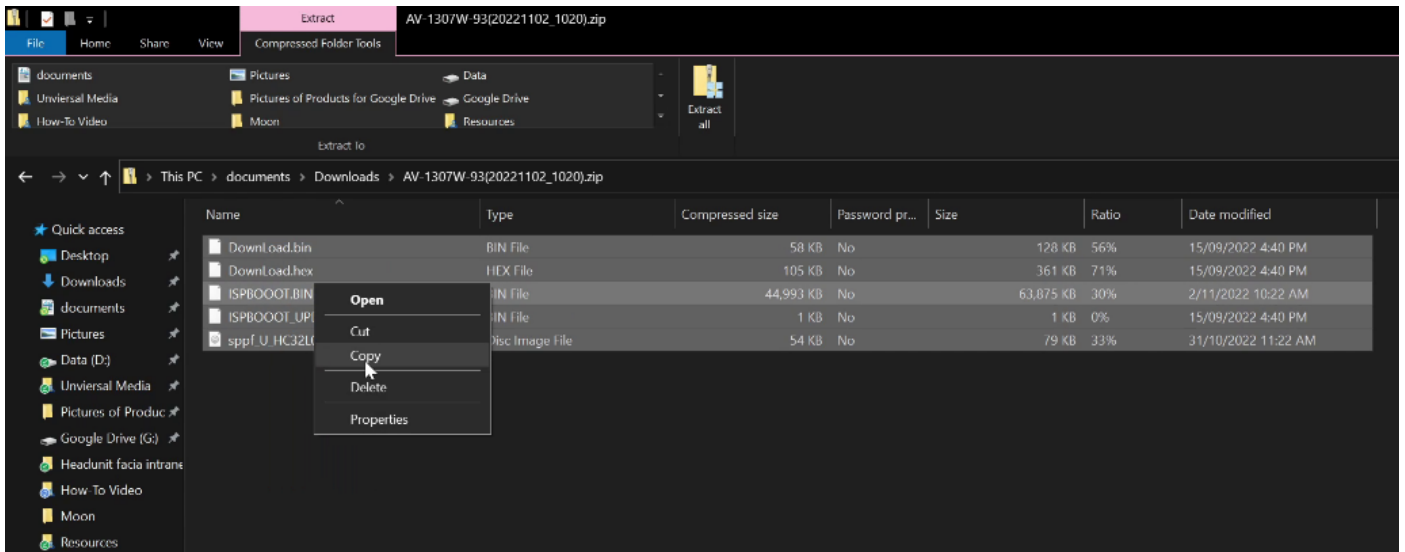
AM9X / AM10X / AM9XFW Update Guide

Plug in the USB device, ensuring it is blank, 32GB or less and is formatted in FAT32. You can format the USB device by right clicking the USB device and selecting format. Here you can make sure it is set to FAT32. PLEASE BE AWARE, ALL YOUR FILES WILL BE DELETED ON THE USB WHEN FORMATTING.

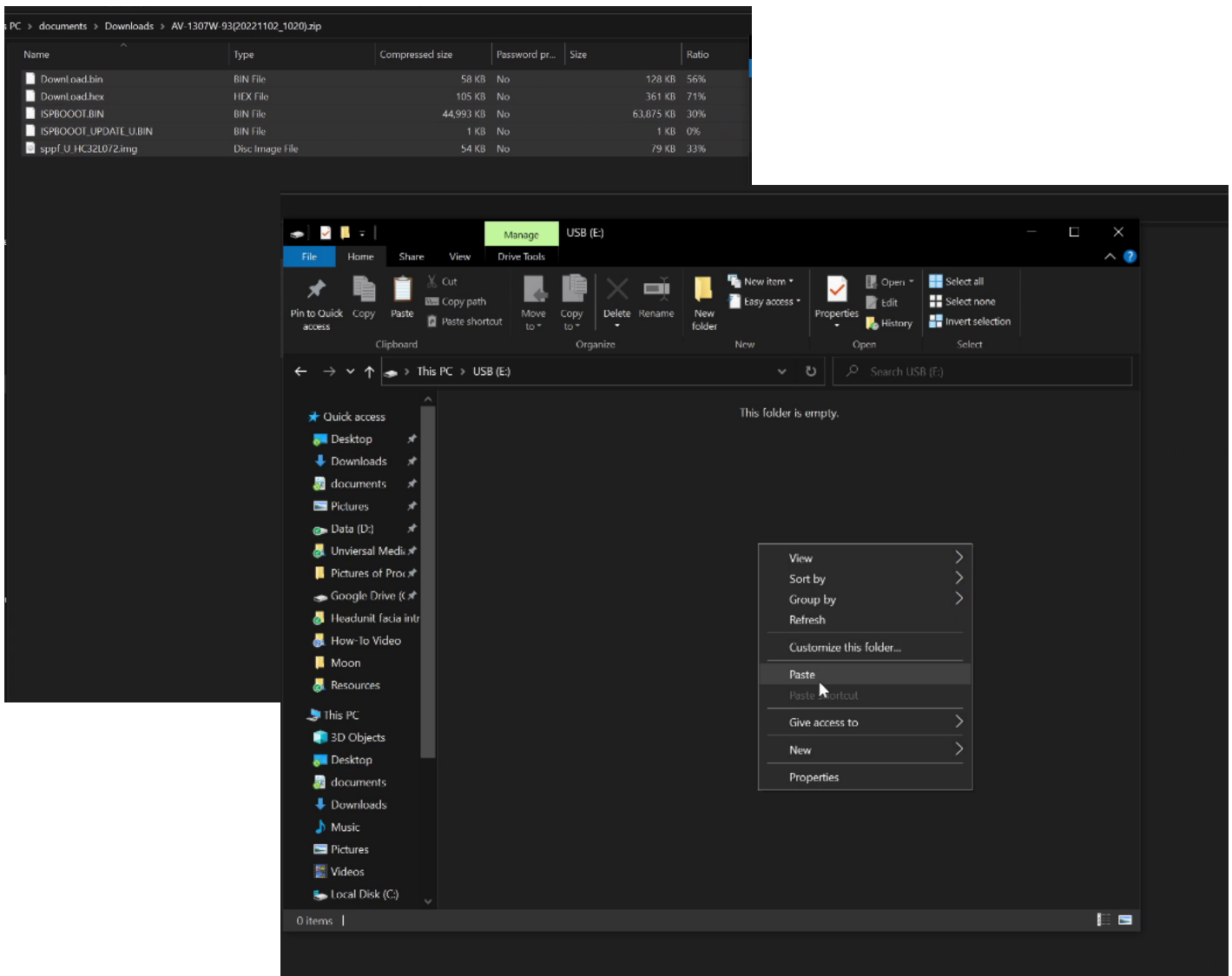


AM9X / AM10X / AM9XFW Update Guide

Once formatted, copy the files from inside the zip file that we downloaded, onto the blank USB Device.



There should be 5 files on the USB device. Safety remove the USB device and move back to your vehicle to install the firmware.



AM9X / AM10X / AM9XFW Update Guide

It is very important that the following steps are followed exactly. If you notice a step is missing from what you see when trying to update your headunit, then please use a different USB device. Some USBs are incompatible with updating the head unit.

To start the update procedure, make sure the car is off for more than 30 seconds and then plug the USB stick into the USB labelled Android Auto and Carplay. If you're unsure which USB it is, it's the one that is typically used to connect your phone to access Wired Android Auto or Wired CarPlay.



Once the USB is inserted, turn on your vehicle to accessory. The head unit will start on a black screen and may flash white. This means the head unit will begin updating its firmware. **DO NOT TURN OFF THE HEAD UNIT DURING THIS TIME, YOU WILL DAMAGE THE HEAD UNIT.** Please be patient with the process. An update screen will appear. Continue waiting.

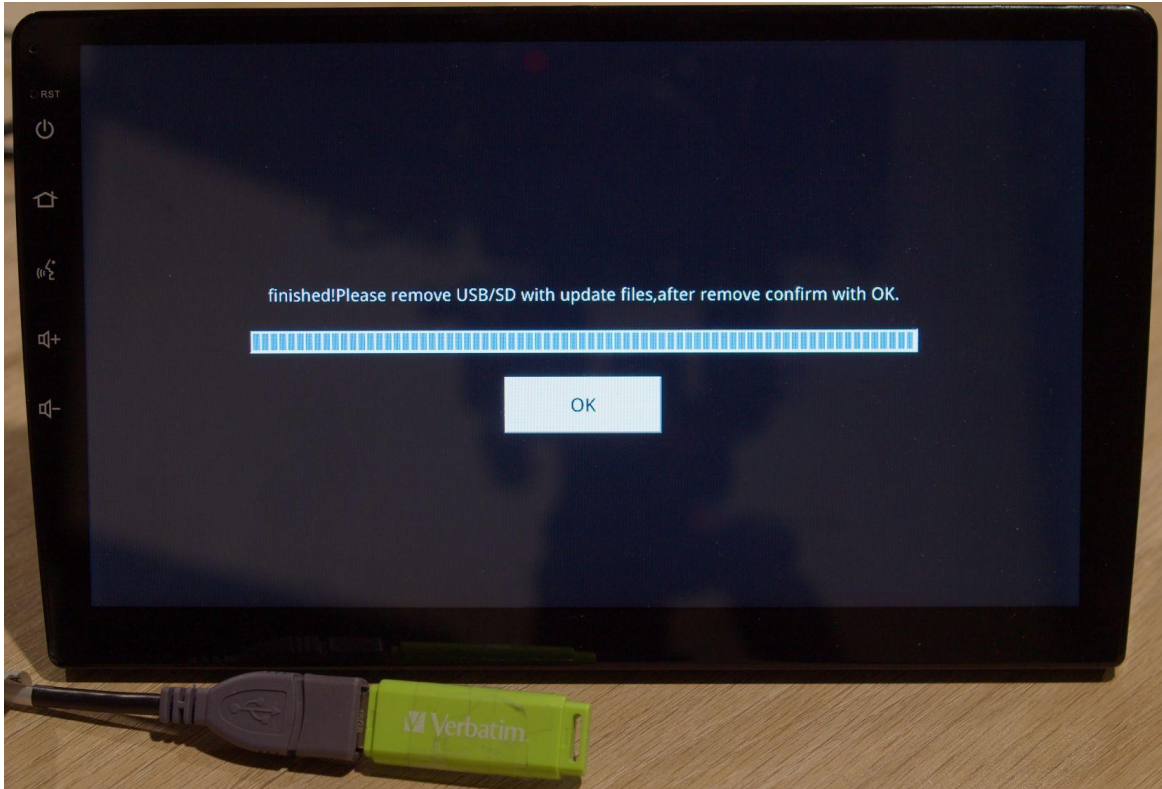


AM9X / AM10X / AM9XFW Update Guide

The home screen may appear during the update process, but continue to wait until a prompt appears. You will then be asked to remove the USB BEFORE pressing the OK button. Once the USB is taken out, you can continue by pressing the OK button on the screen.

NOTE

If you do not see this screen at all during the update procedure then the update will not be fully installed. Either try the process again or use a different USB stick.



Once the head unit is finished restarting, it is recommended to turn off the car, wait 30 seconds then turn it back on. Then you can check the date number to make sure it has updated successfully and you may change the settings to your taste.

NOTE

Android users are required to do the steps below before using Wireless Android Auto. These steps must be done after having done the update but before you pair your phone with the head unit.

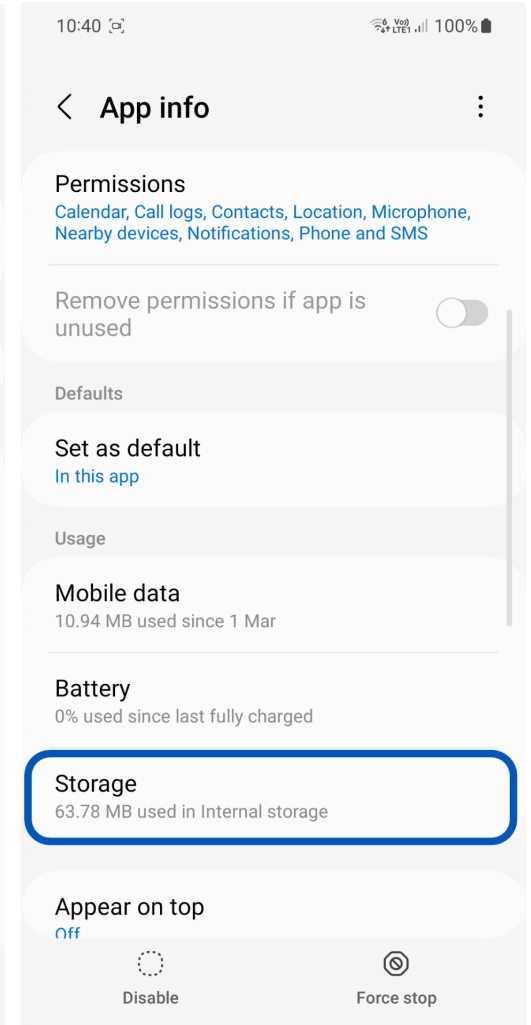
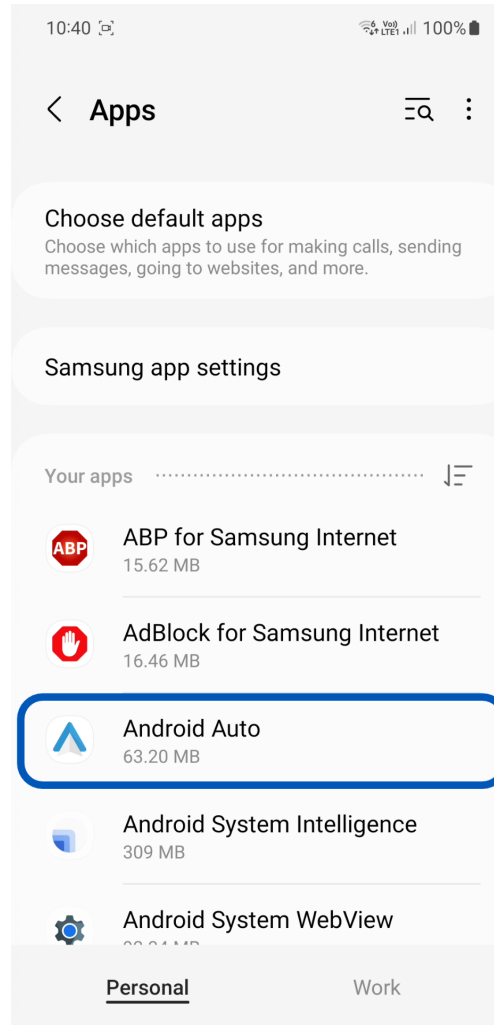
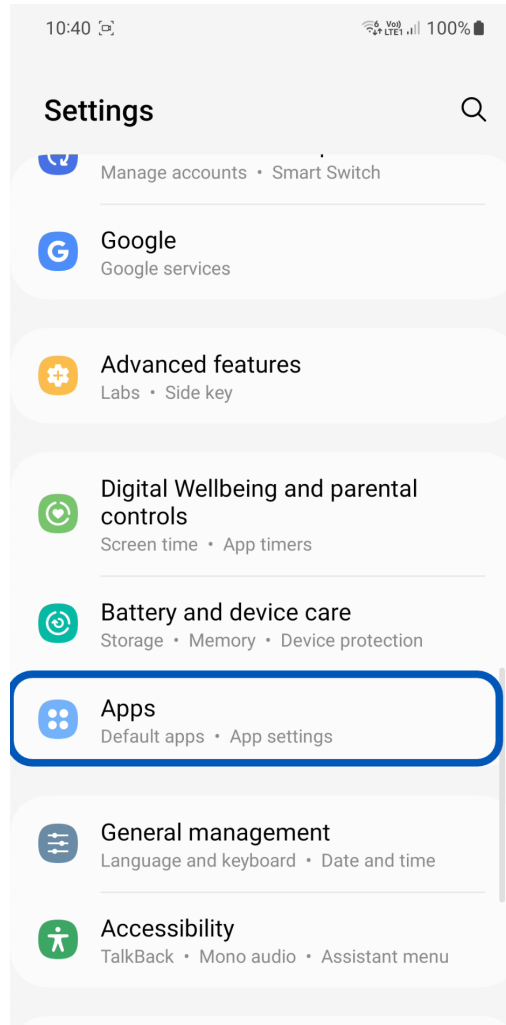
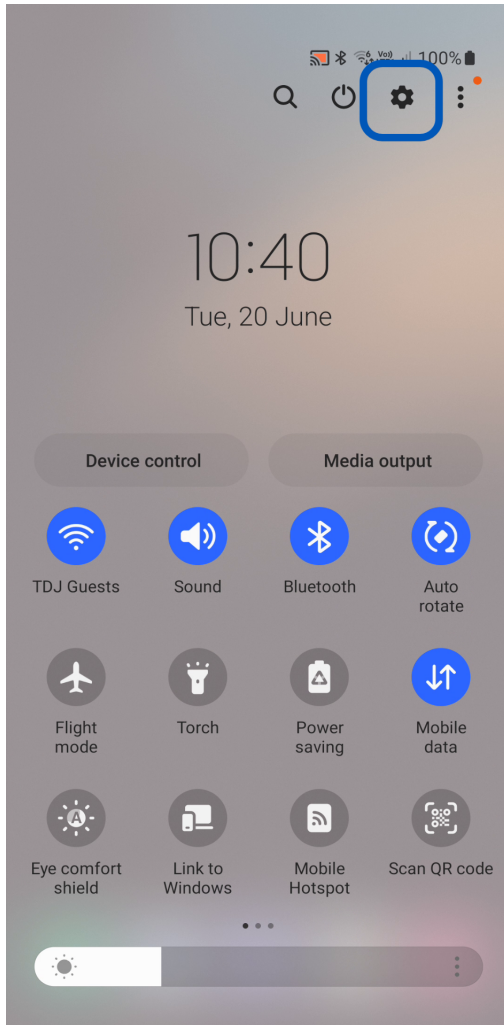
Video guide going through the steps below. To be used as a visual reference only. Please keep in mind the instructions may look different depending on the Android device you are using.

<https://youtu.be/DU7cfw4hfNI>

AM9X / AM10X / AM9XFW Update Guide

1. Navigate to your Android Settings
2. Scroll and tap on the 'Apps' Settings

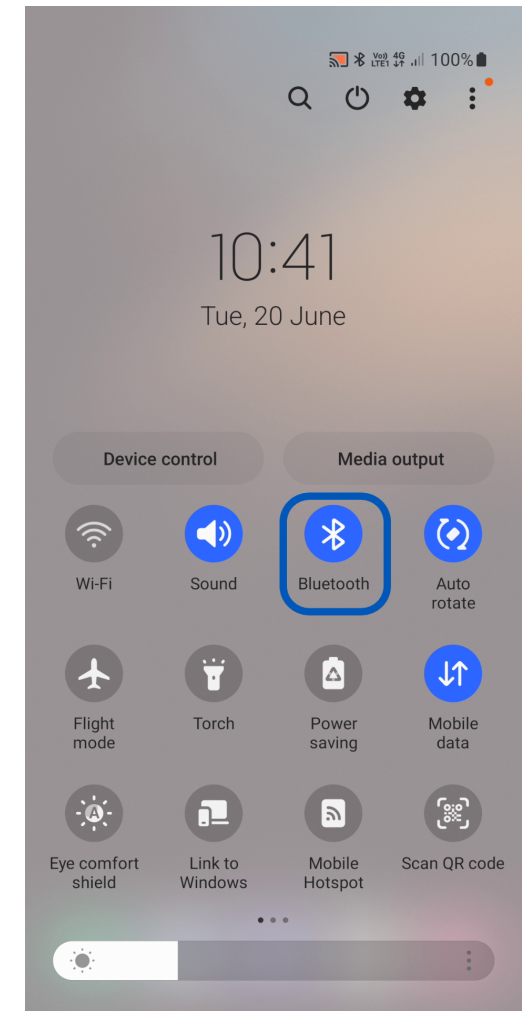
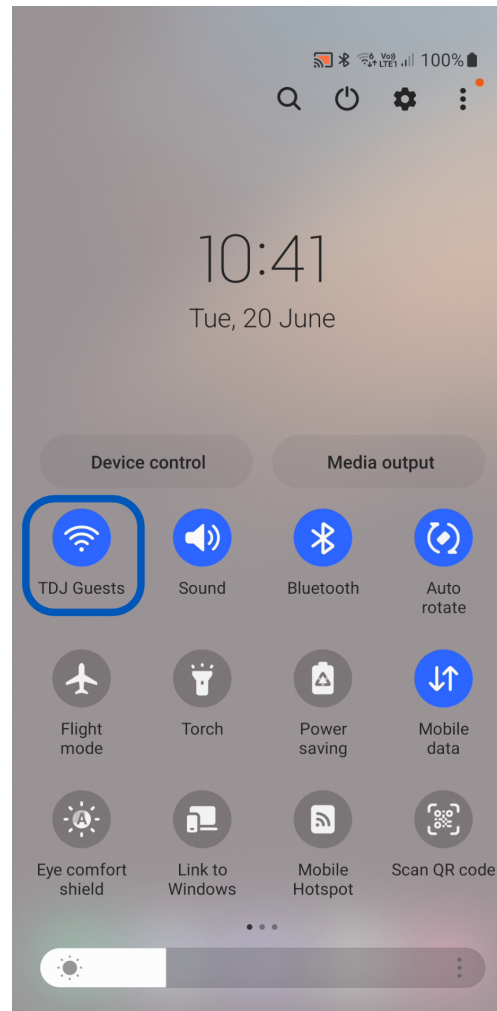
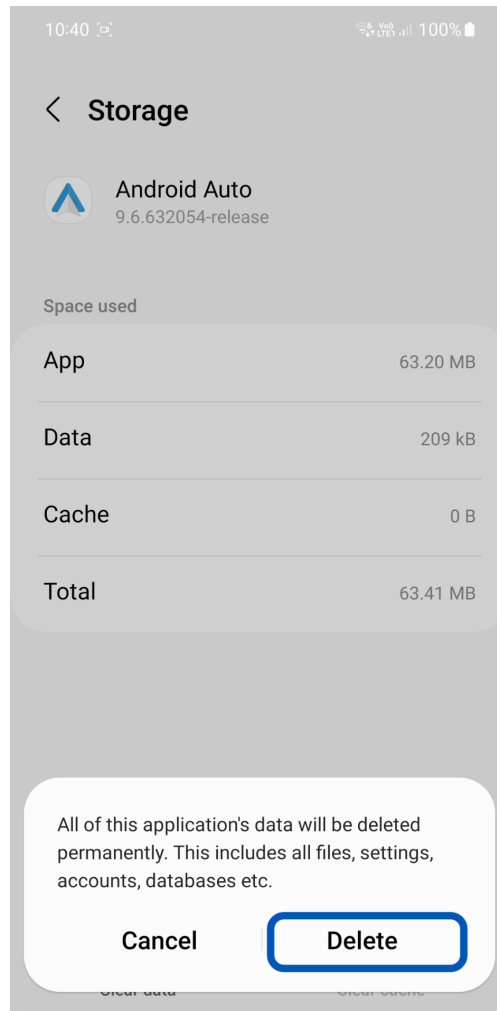
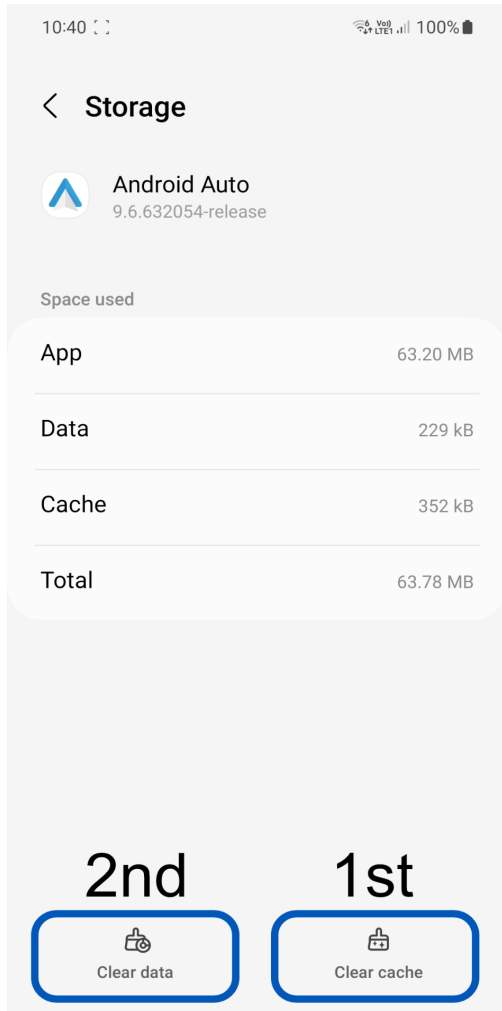
3. Tap on 'Android Auto'
4. Scroll to 'Storage' & tap on it



AM9X / AM10X / AM9XFW Update Guide

5. Clear Cache first on the right side
6. Then 'Clear Data'
7. Press 'Delete' on the pop-up message

8. Turn off Wi-Fi
9. Navigate to your Bluetooth Settings



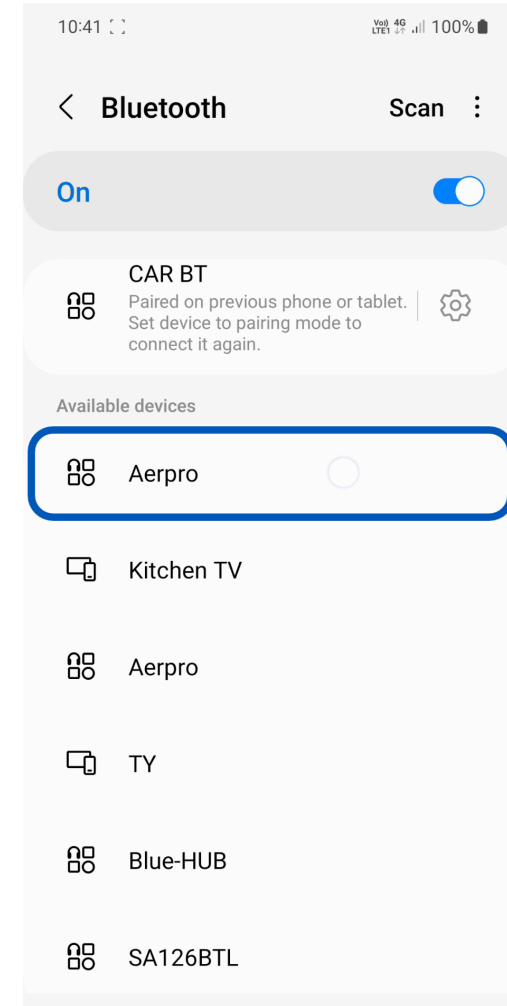
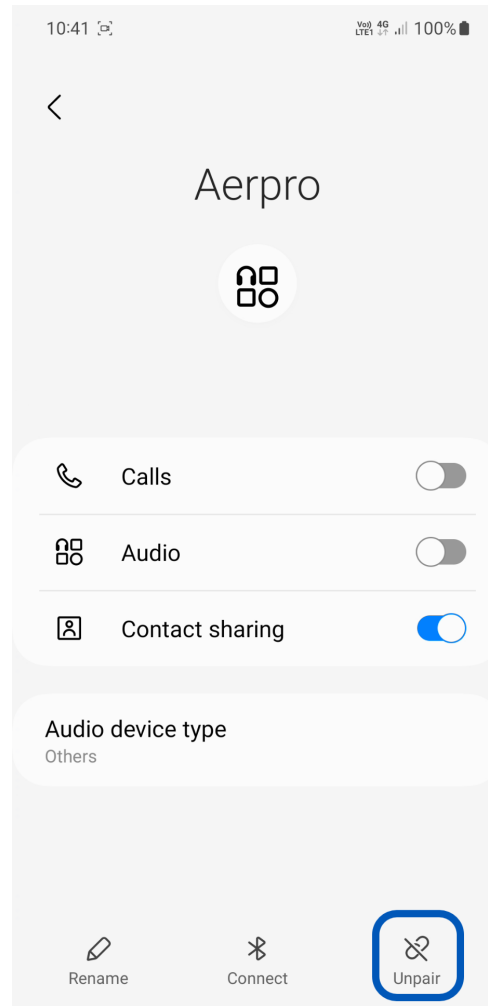
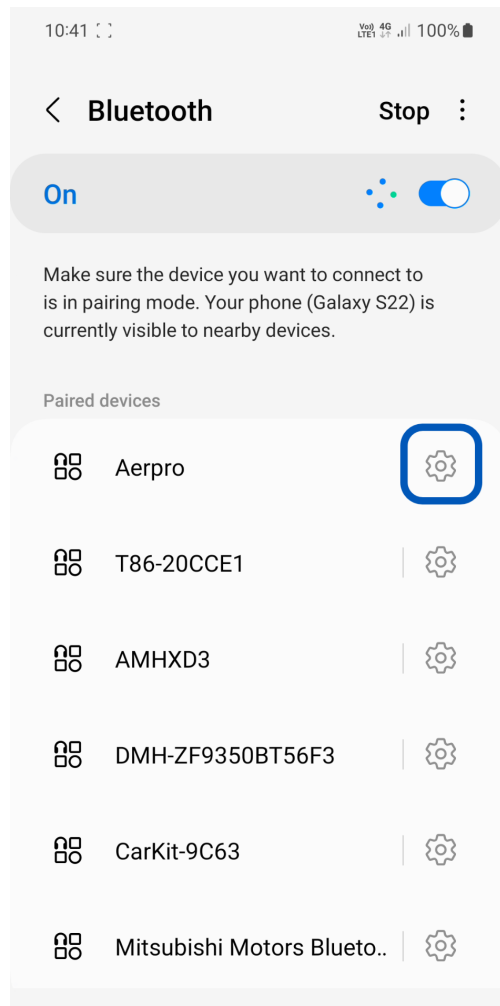
AM9X / AM10X / AM9XFW Update Guide

10. Tap the Cog on the previously paired Aerpro head units Bluetooth. If you have not previously paired with the head unit, you can skip to step 12.

11. Tap Unpair

12. Now you can begin pairing with your Aerpro Headunit and follow the steps from the pairing procedure in the manual

13. If you are still having issues, try restarting your phone and going through this process again.



AM9X / AM10X / AM9XFW Update Guide

NOTE

If you have issues trying to get to the update screen, you may also try inserting the USB when the unit is on. The unit will ask if you want to install an update. If this window still doesn't appear, then you may have a USB device that isn't compatible. Just bear in mind that this method is less reliable in updating your head unit and we still recommend you follow the instructions above before trying this.

Changelog

Latest

19/06/23

- Improved Wireless Android Auto reliability

Previous Versions

01/01/23

- Improved Wireless Android Auto reliability.
- Improved UI scaling for Android Auto
- Defaulted Internal Mic setting to Off

14/12/22

- Added Reverse Camera Horizontal Flip and Reverse Camera Vertical Flip

24/11/22

- Moved Microphone Gain from Bluetooth Settings to General Settings for ease of access

2/11/22

- Added Saturation and Contrast Adjustments for Display and Reverse Camera